

# ICCB Research & Analytics

*Insights from Reports Published April—June 2026*

## Economic Impact Study Finds CCIL are a Worthy Investment

In FY 2023-24, the Community Colleges of Illinois (CCIL) generated over \$27 billion in annual income, supporting over 324,000 jobs.

Additionally, for every \$1 taxpayers spend on CCIL, students gain \$4.30 in lifetime earnings, taxpayers gain \$1.30 in added tax revenue and public sector savings, and society gains \$6.70 in added income and social savings.

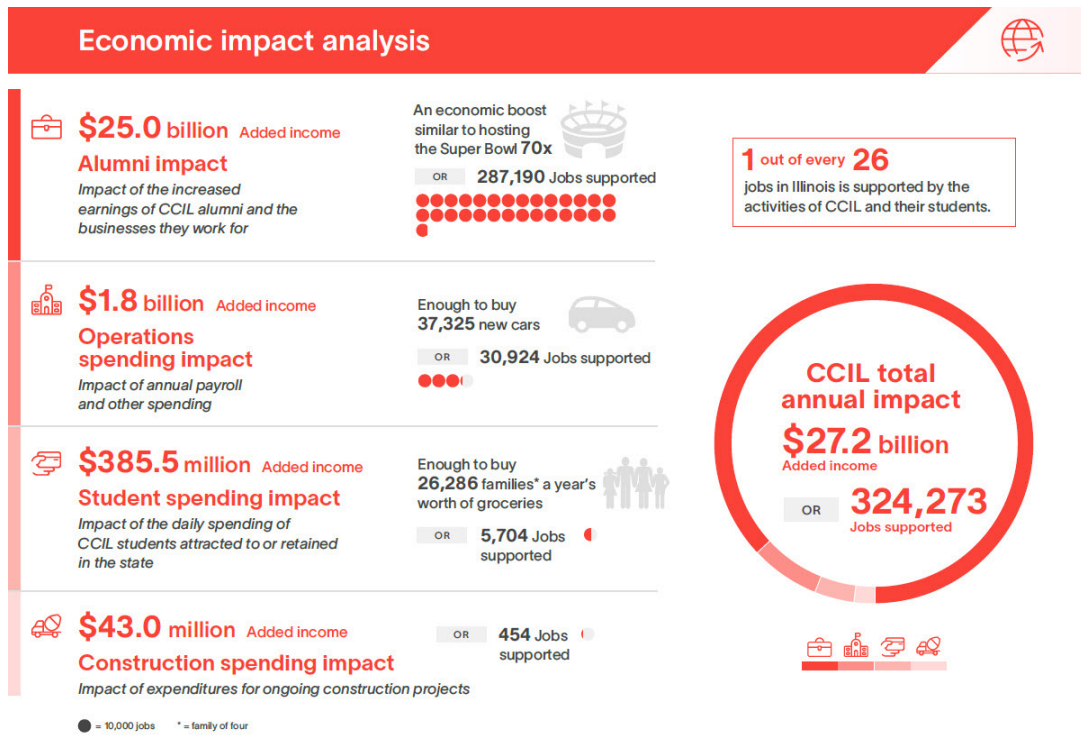
For more information, you can find the main report, executive summary, fact sheet, and infographic of the economic impact study [here](#).

## Retention Rate Increases for Fifth Year In a Row

The fall-to-fall [retention rate](#) for full-time, first-time students at community colleges increased for the fifth consecutive year. Nearly 70% of students who entered in Fall 2024 either earned a credit-bearing degree by the end of their first year or returned in Fall 2025.

## Distance Education Enrollment Up for First Time Since FY2020

Enrollments in [distance education](#) courses increased from about 162,000 in FY 2024 to over 170,000 in FY 2025. This is the first increase since distance education enrollments more than doubled between FY 2020 and FY 2021. Distance Education enrollments ranged from 112,000 in FY 2016 to less than 119,000 in FY 2020. Since the COVID-19 pandemic, distance education enrollments have consistently remained above 160,000 per year.



from [Economic Impact Study Infographic](#), Lightcast 2026

# Reports Published April–June 2026

## Data Book

[Summary Profile of the Illinois Public Community Colleges](#)

### *Section I Fall Student Characteristics*

[Table I-1 – Fall 2025 Student Headcount Enrollment by Gender and Type of Attendance](#)

[Table I-2 – Fall 2025 Student Headcount Enrollment by Instructional Program Area](#)

[Table I-3 – Fall 2025 Student Headcount Enrollment by Age](#)

[Table I-4 – Fall 2025 Student Headcount Enrollment by Ethnic Origin](#)

[Table I-5 – Fall 2025 Student Headcount Enrollment by Academic Classification](#)

[Table I-6 – Fall 2025 Student Headcount Enrollment by Type of Residency](#)

[Table I-7 – Fall 2025 Student Headcount Enrollment by Enrollment Status](#)

[Table I-8 – Proportions of District Populations Served by Illinois Public Community Colleges in Instructional Credit Curricula by Headcount FTE](#)

[Table I-9a – Fall 2025 Student Headcount Enrollment by Instructional Program Area and Student Level – Freshmen Level](#)

[Table I-9b – Fall 2025 Student Headcount Enrollment by Instructional Program Area and Student Level – Sophomore Level](#)

[Table I-9c – Fall 2025 Student Headcount Enrollment by Instructional Program Area and Student Level – High School Level – Dual Enrollment](#)

[Table I-9d – Fall 2025 Student Headcount Enrollment by Instructional Program Area and Student Level – Unclassified Level](#)

[Table I-9e – Fall 2025 Student Headcount Enrollment by Instructional Program Area and Student Level – High School Level – Dual Credit](#)

[Table I-10 – Fall Term Student Headcount Enrollment – Fall 2016 Through Fall 2025](#)

[Table I-11 – Fall Term Student FTE Enrollment – Fall 2016 – 2025](#)

### *Section II Faculty and Staff Data*

[Table II-1 – Summary of Instructional Teaching Faculty \(9 and 12 mos.\) Employed in Illinois Public Community Colleges by Sex and Employment Status During Fall 2025](#)

[Table II-2 – Summary of Administrative Staff Employed in Illinois Public Community Colleges by Gender and Employment Status During Fall 2025](#)

[Table II-3 – Summary of Other Nonteaching Professional Staff \(9 and 12 mos.\) Employed in Illinois Public Community Colleges by Gender and Employment Status During Fall 2025](#)

[Table II-4 – Summary of Civil Service or Classified Staff Employed in Illinois Public Community Colleges by Gender and Employment Status During Fall 2025](#)

[Table II-5 – Fiscal Year 2026 Average Contractual Base Salaries for Full-Time Teaching Faculty \(9 mos.\) Administrative Staff \(12 mos.\) and Nonteaching Professional Staff \(12 mos.\) in Illinois Public Community Colleges](#)

[Table II-6 – Average On-Campus Class by Type – Fiscal Year 2025](#)

[Table II-7 – Percentage of On-Campus Classes by Class Size Categories – Fiscal Year 2025](#)

## **Faculty and Staff Reports**

[FY 2026 Salary Report](#)

## **Snapshots and Insights**

*Dual Credit Summary*

[Dual Credit Student Summary](#)

[Dual Credit Course Count](#)

[Dual Credit Average Class Size](#)

[Dual Credit Enrollment by College](#)

*Historical Tables*

[Fall Enrollment 1965 to present](#)

[Fall FTE 1965 to present](#)

[Fall Enrollment by Full-time/Part-time Status 1972 to present](#)

*Student Success*

Student Retention Rate [Summary](#) and [By College](#)

## **Student Reports**

*Distance Education*

[FY 2025 Report and Data Tables](#)