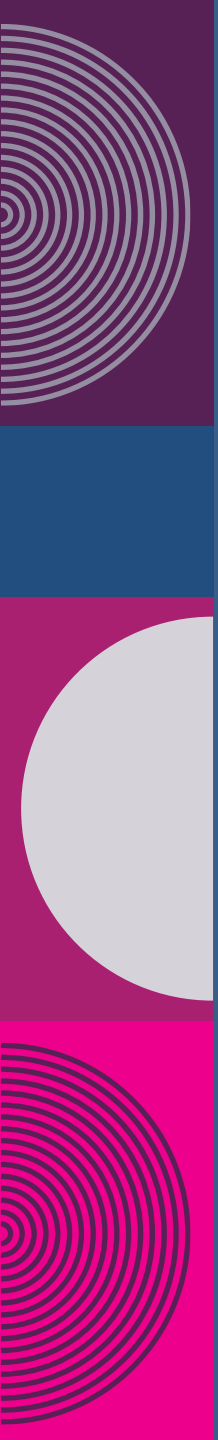




**ICCB INTEGRATED ENGLISH  
LITERACY AND CIVICS EDUCATION  
FY25 GRANT  
BIDDER'S CONFERENCE**

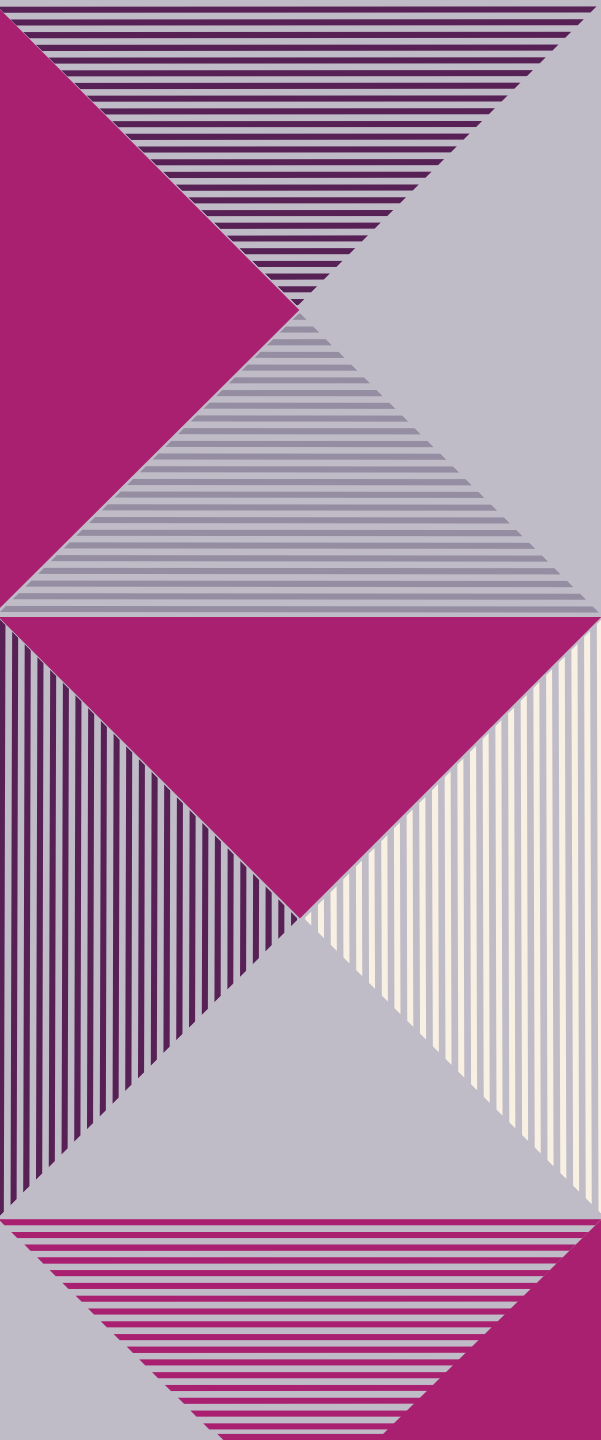
***BRITT GARTON PISTO  
DIRECTOR FOR IELCE***

**MAY 6, 2024**



This bidder's conference is designed to provide an overview of the IELCE Notice of Funding Opportunity and submission guidelines while providing time for questions.

**Applicants are expected to read the NOFO and the supporting documents in their entirety.**



# THE APPLICATION AND ALL REQUIRED DOCUMENTS ARE DUE.... LATE SUBMISSIONS ARE NOT ACCEPTED

**The grant is  
due on:**

**Wednesday,  
May 29<sup>th</sup> at 5:00pm.**

**All grants must be  
submitted via  
Amplifund:**

**<https://il.amplifund.com/Public/Opportunities/Details/eada1341-d244-47d9-9d15-6341f6d0494f>**



# AGENDA

Purpose and Eligibility

Demonstrated Effectiveness

Grant Deliverables and Performance

Fiscal Considerations

Grant Narrative and Scope of Work

Grant Submission



# Purpose and Eligibility

**This Notice of Funding Opportunity is intended to solicit a Request for Proposal from eligible programs (CFR 463.23) that work to achieve the purpose of Section 243, Integrated English Literacy and Civics Education, of Title II of the Workforce Innovation and Opportunity Act (WIOA) of 2014, which is to provide adult education and literacy services to:**

**English Language Learners who are adults, including professionals with degrees and credentials in their native countries, that enables such adults to achieve competency in the English language and acquire the basic and more advanced skills needed to function effectively as parents, workers, and citizens in the United States.**

**Prepare adults who are English Language Learners for, and place such adults in, unsubsidized employment in in-demand industries and occupations that lead to economic self-sufficiency.**

**Integrate with the local workforce development system and its functions to carry out the activities of the program.**

## **The Components of the IELCE Program Include:**

- 1. Literacy and English Language Acquisition**
- 2. Civics Education**
- 3. Workforce Preparation / Bridge**
- 4. Workforce Training / ICAPS  
(Integrated Career & Academic Preparation System)**



# ELIGIBLE APPLICANTS

Per CFR 463.23, to be considered for funding under this Request for Proposal, an applicant of demonstrated effectiveness must be an eligible applicant, as listed below:

- a. Local Educational Agencies (LEAs)
- b. Community-Based Organizations (CBOs) or Faith-Based Organizations (FBOs)
- c. Volunteer Literacy Organizations
- d. Institutions of Higher Education (IHEs)
- e. Public or Private nonprofit agencies
- f. Libraries
- g. Public Housing Authorities
- h. Nonprofit institutions that are described previously and have the ability to provide adult education and literacy services to eligible individuals
- i. Consortium or coalition of agencies, organizations, institutions, libraries, or authorities described in (a) through (h) of this section, and
- j. Partnership between and employer and an entity described in (a) through (i) of this section.

# CONSORTIUM AND SUBGRANTEES

When applying as a consortium or an entity who subgrants IELCE funds to additional agencies, the following processes must be addressed.

- \* A lead agency provides subawards to subrecipients to carry out programmatic purposes. The lead agency acts as a pass-through entity.
- \* The lead agency may not subcontract nor issue a subaward for any portion of this grant without prior approval of the Illinois Community College Board. This is satisfied with the subrecipient being identified in the Grant Narrative, the Uniform Budget, and Consortium / Subgrantee Signature page. (CFR 25.300).
- \* The lead agency must notify all consortium partners or subrecipients of the applicable laws and regulations by providing all stakeholders with the IELCE Grant Agreement. The terms of the agreement apply to all subawards authorized in the agreement (CFR 200.101(b)(2)).
- \* The lead agency is the coordinating entity and is responsible for overseeing the implementation of all grant deliverables and ensuring compliance with all fiscal and programmatic regulations, deliverables, and reporting requirements.
- \* Subrecipients are accountable for executing their assigned tasks within the parameters set by the lead agency and must provide the lead agency their Unique Entity Identifier.

# QUESTIONS ABOUT PURPOSE AND ELIGIBILITY ?





# DEMONSTRATED EFFECTIVENESS

- \* The eligible applicant must demonstrate effectiveness in serving the target population(s) per CFR §463.75. The ICCB will review the information in making this determination.
- \* The demonstrated effectiveness document also allows for an explanation of the data.
- \* Applications that do not meet the demonstrated effectiveness criteria as listed in the NOFO will not be considered in the Request for Proposal process.
- \* If applying as a consortium or include subgrantees, each entity must meet demonstrated effectiveness.

# THRESHOLDS

## - Outcomes for Participants -

### Improving the Skills of Eligible Individuals.

The applicant must demonstrate that 27.75% of learners have made a measurable skill gain in the content areas of English Language Acquisition.

### The applicant must demonstrate effectiveness in at least one of the following outcomes categories:

- 18% - Employment rate - second quarter after exit
- 19% - Employment rate - fourth quarter after exit
- \$3,447 - Median Earning - second quarter after exit
- 21% - Credential Attainment

# DATA AND EXPLANATIONS

- ❑ The data provided on the ICCB website was vetted before posting.
- ❑ Applicants may provide supplemental data for the purposes of meeting demonstrated effectiveness or to supplement data that was collected and reported to the ICCB, particularly for credential attainment and employment.
- ❑ Applicants that do not meet the criteria for Demonstrated Effectiveness will not move into the merit-based review which considers applicants for funding.

For currently funded Adult Education and Title II programs, use the ICCB Title II Performance files posted here:

<https://www.iccb.org/grant-opportunities/> This link will take you to the IELCE NOFO and the documents are listed under the **Resource section**.

***\*Example of resource section on next slide.***

For applicants not previously funded by Title II through the ICCB, they must provide performance data and cite the sources for each outcome to demonstrate effectiveness.

# RESOURCES YOU WILL FIND ON THE ICCB WEBSITE - IELCE GRANT SECTION:

[FY25-FY28 Integrated English Literacy and Civics Education Competitive Grant Notice of Funding Opportunity](#)

## Resources

- [Area Planning Council and LWIA Map](#)
- **[FY25 ICCB IELCE Supporting Information](#)**
- [IELCE Tool Kit](#)
- [EARN Multilingual Spotlight](#)
- [Amplifund Applicant Portal Guide](#)
- [ICCB FY21 to FY23 Adult Education Credential Attainment](#)
- [ICCB FY21 to FY23 Adult Education Skill Gain](#)
- [ICCB FY21 to FY23 Adult Education Q2 Employment and Median earnings](#)
- [ICCB FY21 to FY23 Adult Education Q4 Employment](#)
- Amplifund instructional video: [:https://youtu.be/IdRaN3hyuZc](https://youtu.be/IdRaN3hyuZc)
- [FAQ too!](#)

# QUESTIONS ABOUT DEMONSTRATED EFFECTIVENESS ?





# Grant Deliverables

1. Provide direct instruction leading to increases in education functioning levels to eligible adult learners and ensure students are college and workplace ready.
2. Integrate distance learning programming to address barriers to in-class participation and include technology focused instruction.
3. Ensure 100% of adult learners receive the required NRS pre-assessments.
4. Scale effective strategies including the required bridge programs and Integrated Career and Academic Preparation System (I-CAPS) or other approved integrated models that meet the required guidelines for the ICCB.
5. Utilize data from the state Management Information System to improve instruction and services to ensure performance accountability.
6. Prioritize transitioning students to postsecondary training and degree attainment, industry recognized credential attainment, and/or employment.
7. Collaborate with core and required partners as well as other stakeholders identified in the annual Area Planning Council plans to ensure all approved APC plan deliverables are met. (Illinois Policy) Information on the APC plans and links to the Local Area Plans are available in the Resource Section and Resource Materials.
8. Multilingual instruction is allowable to supplement, not supplant English Language Instruction. Examples of multilingual instruction are included in the Resource section listed on the grants page of the ICCB website: <https://www.iccb.org/grant-opportunities/>

# Performance

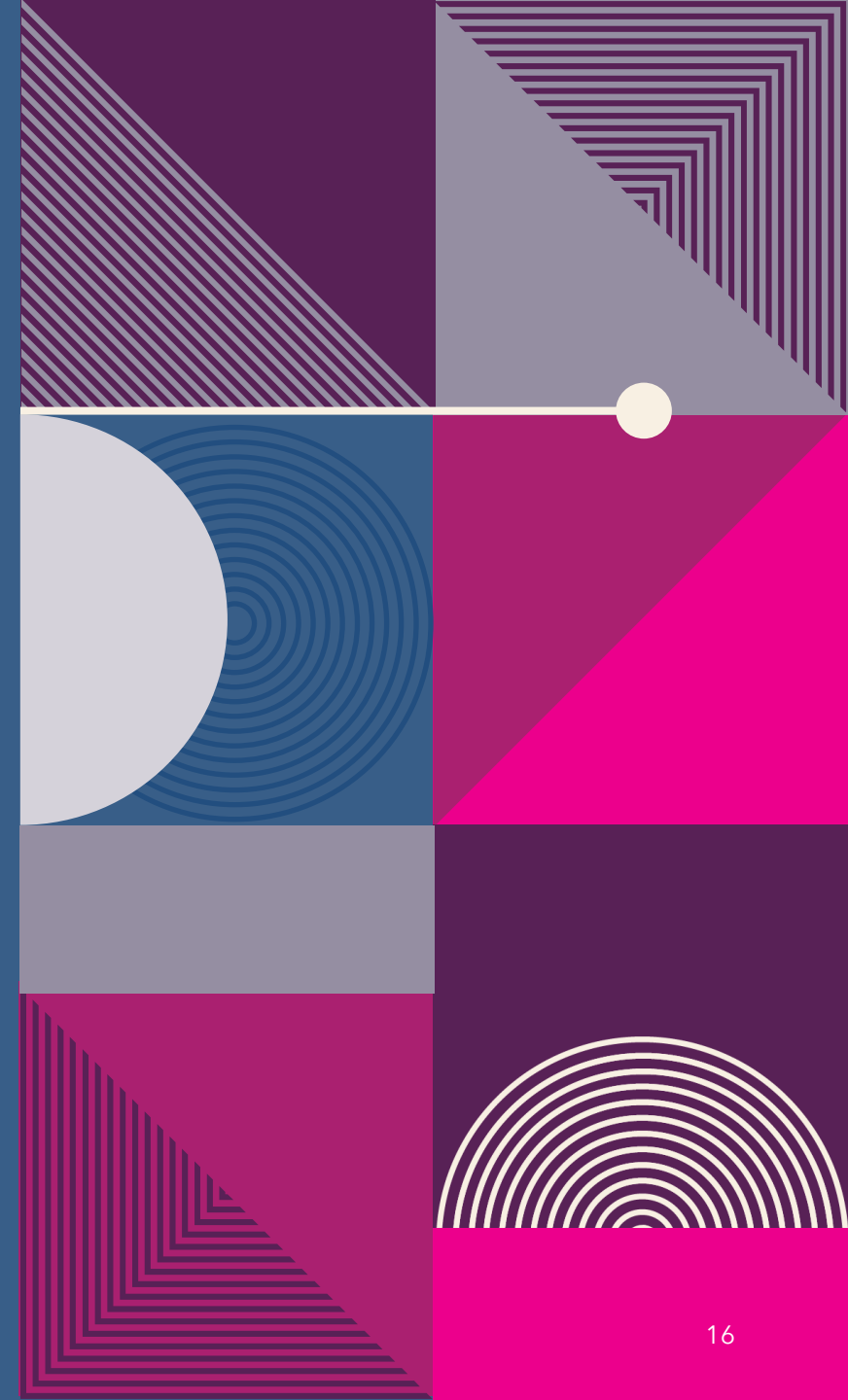


The primary indicators of performance are required under the Workforce Innovation and Opportunities Act (WIOA) and CFR §463.170.

The negotiated targets shown are for Fiscal Year 2024. Performance Targets for FY25, and Renewal Years: FY26, FY27, FY28 will be provided once they are available.

Performance Measure	Target
<b>Employment (Second Quarter After Exit):</b> Percentage of program participants who are in unsubsidized employment during the second quarter after exit from the program.	27.0%
<b>Employment (Fourth Quarter After Exit):</b> Percentage of program participants who are in unsubsidized employment during the fourth quarter after exit from the program.	27.6%
<b>Median Earnings (Second Quarter After Exit):</b> Median earnings of program participants who are in unsubsidized employment during the second quarter after exit from the program.	\$4,926.00
<b>Credential Attainment:</b> Percentage of program participants who obtain a recognized postsecondary credential, or a secondary school diploma or its recognized equivalent, during participation in or within 1 year after exit from the program; providing they obtain or retain employment or enter postsecondary education.	30.9%
<b>Measurable Skill Gains:</b> Percentage of program participants who, during a program year, are in an education or training program that leads who are achieving measurable skill gains toward such a credential or employment.	37.1%

# QUESTIONS ABOUT GRANT DELIVERABLES AND PERFORMANCE EXPECTATIONS ?





# FISCAL CONSIDERATIONS

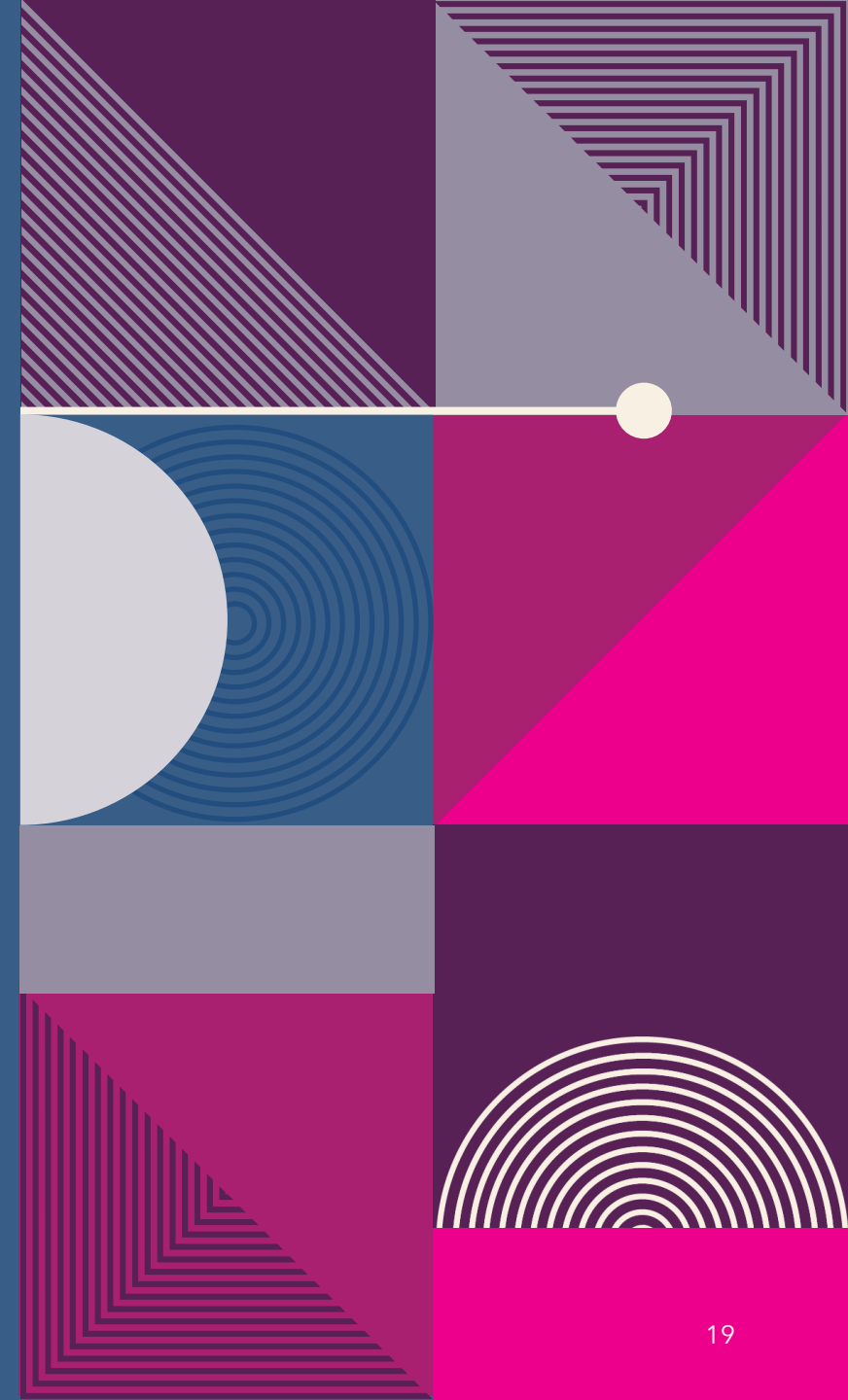
1. The funding amount in the IELCE FY25 Grant NOFO are estimates. We do not yet have a Federal IELCE Final Allocation.
2. You must submit a budget for the IELCE funding stream. (***Rupa - description of budget template in Amplifund***).
3. Federal funds have a 5% indirect cost.
4. There is no required match for this competition.

# IELCE FUNDING FORMULA

The funding formula is a combination of a base allocation, student enrollment (3-year average) + attendance hours (3-year average).

1. Base allocation is calculated by a percentage of the total allocation divided equally among all funded providers.
2. Student Enrollment is a cost per student times the program's 3-year average.
3. Attendance hours is a cost per attendance hours times the program's 3-year average.
4. **Programs that do not have 3 years of data will be funded based on the average of their years.**
5. **Programs that have not been funded in prior years would get a base plus the projected number of students.**

# QUESTIONS ABOUT FISCAL CONSIDERATIONS ?





# Grant Narrative

Sections Include the Following:

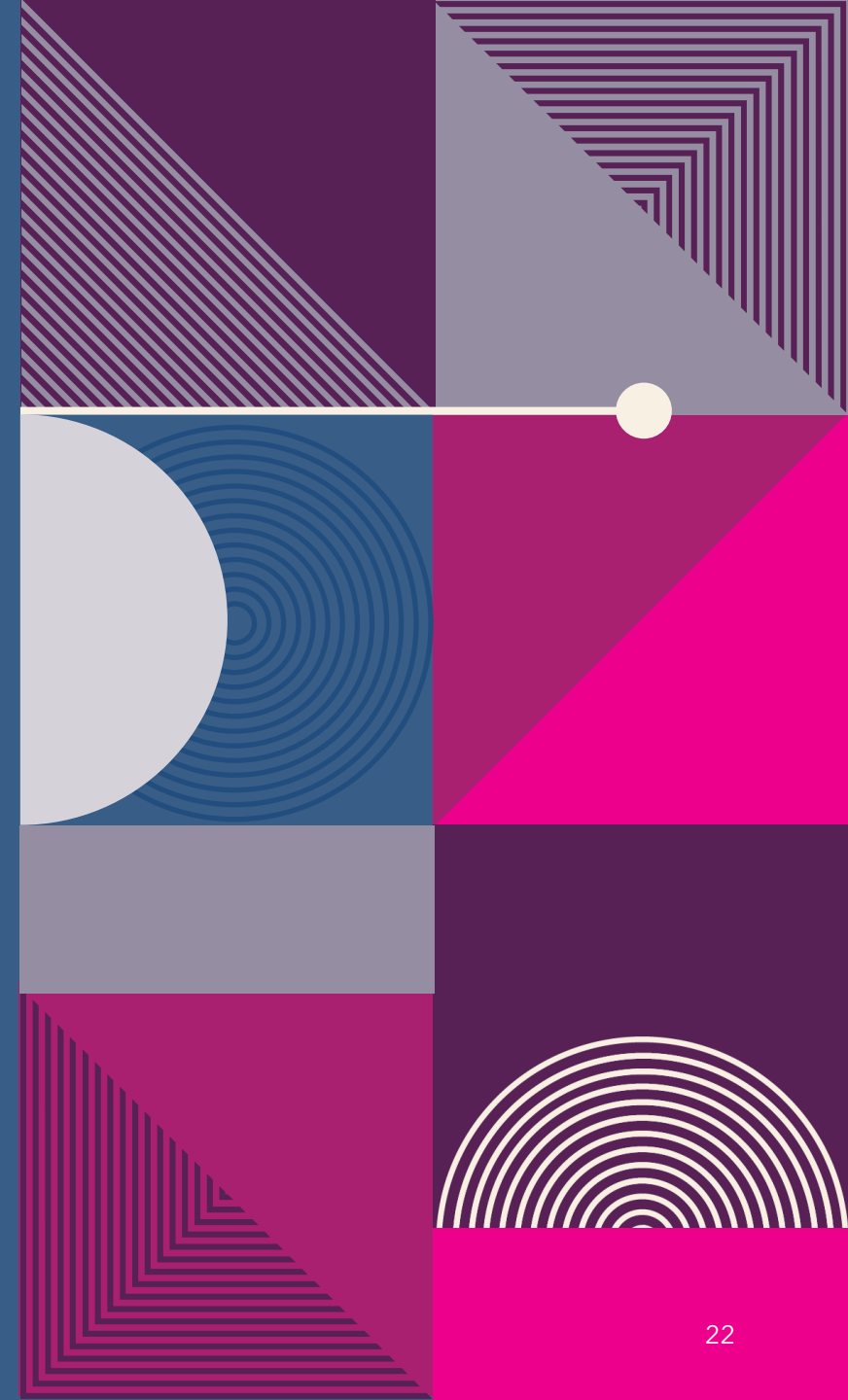
- Past Effectiveness
- Partnerships and WIOA Alignment
- Statement of Need
- Program Design
- Recruitment and Retention
- Instruction and Assessment
- Contextualized Instruction, Bridge, and ICAPS Programs
- Data and Monitoring
- Support and Service Integration



# Scope of Work

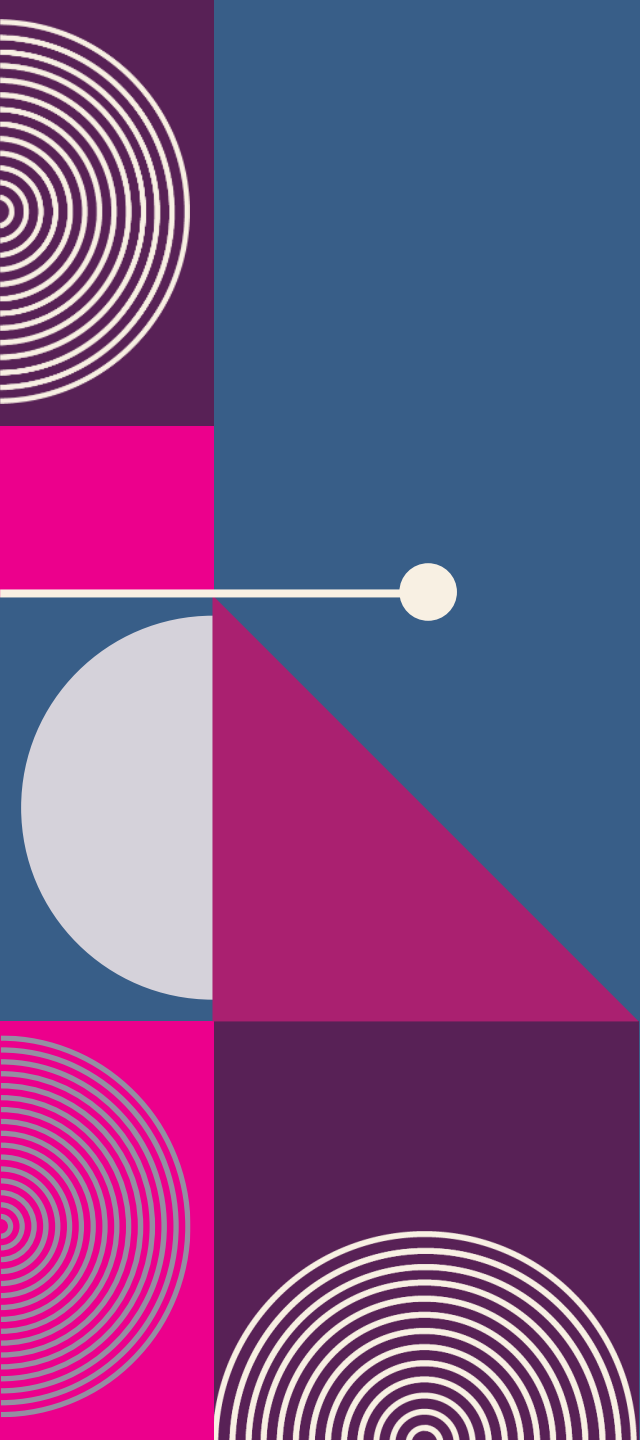
The purpose of the document is to demonstrate how you will organize and carry out the IELCE Programming during FY25.

# QUESTIONS ABOUT GRANT NARRATIVE OR SCOPE OF WORK ?



# GRANT SUBMISSION:

- **The IELCE Grant is Due Wednesday, May 29<sup>th</sup>.**
- **All Documents to be submitted via Amplifund Include:**
  - 1. Uniform Grant Application**
  - 2. Agency Contact Information (CEO, CFO, Project Administrator, and Project Coordinator)**
  - 3. Uniform Budget (including the CEO/authorized signature)**
  - 4. Grant Narrative**
  - 5. Scope of Work**
  - 6. Demonstrated Effectiveness**
- **Complete the FY25 Internal Control Questionnaire (ICQ) in GATA, on the GATA portal for grantees:**  
<https://grants.illinois.gov/portal/>
- **Complete all required forms in Amplifund:**  
<https://il.amplifund.com/Public/Opportunities/Details/eada1341-d244-47d9-9d15-6341f6d0494f>



# **DUE DATE WEDNESDAY, MAY 29<sup>TH</sup> 5:00PM**

## **✓ Checklist for the IELCE Grant:**

- \* Narrative
- \* Scope of Work
- \* Demonstrated Effectiveness
- \* Budget
- \* UGA
- \* Agency Contact Information

**Must be submitted via Amplifund no later than  
5:00pm on May 29<sup>th</sup>**



# SNAPSHOT OF CFRs (CODE OF FEDERAL REGULATIONS) CITED DURING THE FY25 IELCE COMPETITIVE GRANT BIDDER'S CONFERENCE:

## **Slide 4:**

CFR 463.23 - Eligibility to apply description:

<https://www.ecfr.gov/current/title-34/subtitle-B/chapter-IV/part-463/subpart-C/section-463.23>

Department of Education IELCE - Section 243 Description:

<https://www2.ed.gov/about/offices/list/ovae/pi/AdultEd/octae-ielce-report-to-congress-final-508.pdf>

## **Slide 6:**

CFR 25.300 - Subrecipient description:

<https://www.ecfr.gov/current/title-2/subtitle-A/chapter-I/part-25/subpart-C/section-25.300>

CFR 200.101(b)(2) Applicability to Subrecipient description:

<https://www.ecfr.gov/current/title-2/subtitle-A/chapter-II/part-200/subpart-B/section-200.101>

## **Slide 9:**

CFR 463.75 - IELCE target population description:

<https://www.ecfr.gov/current/title-34/section-463.75>

## **Slide 13:**

CFR 463.170 - State level performance for primary indicators description:

<https://www.ecfr.gov/current/title-34/subtitle-B/chapter-IV/part-463/subpart-I/section-463.170>



# THANK YOU !

Britt Garton Pisto

312-814-8972

[britt.pisto@illinois.gov](mailto:britt.pisto@illinois.gov)