

Illinois Community College Board

FISCAL YEAR 2013 SPRING ENROLLMENT REPORT
Headcount and Full-time Equivalent (FTE) Both Down from Last Year.
Enrollments Remain Strong by Historical Standards.

Community colleges report opening Spring term enrollment figures to the Illinois Community College Board using a brief web based survey. These figures reflect student enrollments as of the end of registration for the Spring 2013 semester – usually the 10th day of the term.

Overall, short term statewide results of the fiscal year 2013 Spring enrollment survey show decreases from last year. Compared to the same term one year ago, statewide Spring 2013 headcount enrollments and full-time equivalent (FTE) enrollments both decreased. FTE figures reflect the total number of credit hours being taken by students divided by 15 – the number of semester hours traditionally considered a full-time class load. The Spring 2013 semester headcount was 366,003 compared to 373,785 last year (a headcount decrease of 7,782 or -2.1 percent). The latest FTE count was 205,947 compared with 211,247 a year ago (an FTE decrease of 5,300 or -2.5 percent).

Table 1 contains comparative statewide Spring tenth-day enrollments for the last five years. **The latest Spring enrollments remain strong by historical standards.** While down from recent record levels, Spring 2013 headcount enrollments are at the seventh highest level and FTE enrollments are at the fourth highest level in the thirty-nine years that a separate Spring opening enrollment survey has been collected. Figure 1 on the next page illustrates a comparison of headcount and FTE trends from 2009 - 2013.

Table 1
 SUMMARY OF OPENING SPRING ENROLLMENTS IN
 ILLINOIS PUBLIC COMMUNITY COLLEGES FROM 2009 TO 2013

	Spring 2009	Spring 2010	Spring 2011	Spring 2012	Spring 2013
Headcount	361,837*	389,432*	381,582	373,785*	366,003
Percent Change	2.9%	7.6%	-2.0%	-2.0%	-2.1%
FTE	202,804*	224,076	219,752	211,247*	205,947
Percent Change	4.6%	10.5%	-1.9%	-3.9%	-2.5%

* Adjusted Total

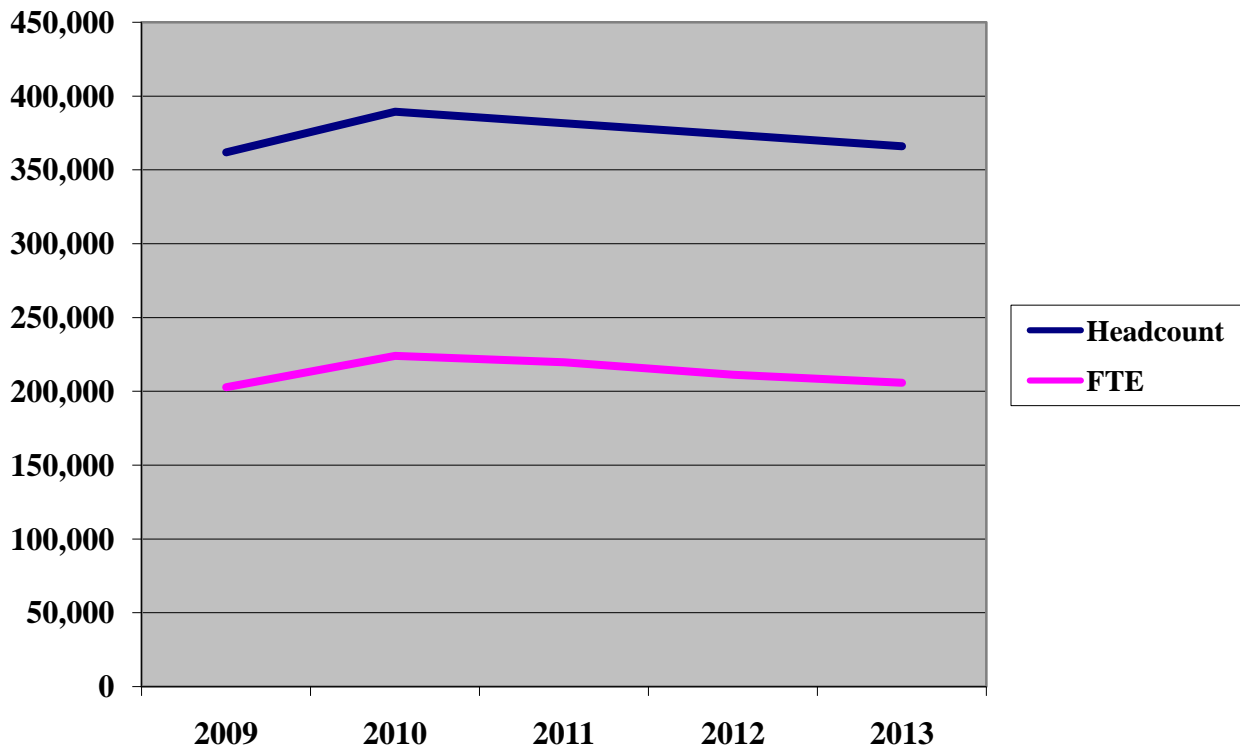


Figure 1
Opening Spring Enrollment Trends in Illinois
Public Community Colleges from 2009 to 2013

Table 2 provides a comparison of fiscal year 2009 through fiscal year 2013 Spring headcount enrollments for each community college. Among the 48 community colleges, since last year headcount increases were reported at 13 colleges (1.0 percent or higher). Thirty colleges saw decreases (1.0 percent or more) compared to last year. Five colleges reported little or no change (less than 1.0 percent) versus last year. Longer term, statewide headcount enrollments were up 1.2 percent compared to Spring 2009.

Table 3 contains a comparison of full-time equivalent (FTE) enrollments for the same five-year period. Compared to last year, Spring 2013 FTE increases were reported by 11 colleges; decreases by 33, and 4 colleges indicated little or no change. Longer term, statewide FTE enrollments were up 1.5 percent compared to Spring 2009.

Table 4 provides fiscal year 2009 through fiscal year 2013 Spring opening enrollments in internet based courses at each community college. Enrollments in online courses continued to grow through Spring 2012, but decreased slightly in Spring 2013. At the beginning of the Spring 2013 semester, there were 101,602 students (duplicated) enrolled in internet courses compared to 102,477 in Spring 2012 (a decrease of 0.9 percent) and 76,220 in Spring 2009 (an increase of 33.3 percent).

Illinois Community College Board
Table 2
SUMMARY COMPARISON OF SPRING HEADCOUNT ENROLLMENTS
BY COLLEGE, FISCAL YEARS 2009 - 2013

Dist. No.	College Name	Spring FY 2009 Headcount	Spring FY 2010 Headcount	Spring FY 2011 Headcount	Spring FY 2012 Headcount	Spring FY 2013 Headcount	Spring % Change 2009-2013	Spring % Change 2012-2013
503	Black Hawk	6,199	6,949	7,092	6,613	6,865	10.7 %	3.8 %
508	Chicago	(60,215)	(65,516)	(62,765)	(60,999) **	(61,254)	(1.7)	(0.4)
06	Daley	9,591	9,442	8,684	8,158	9,527	-0.7	16.8
01	Kennedy-King	7,272	7,260	6,450	6,339	6,158	-15.3	-2.9
03	Malcolm X	7,566	8,962	8,073	7,636 **	6,507	-14.0	-14.8
05	Olive-Harvey	4,096	5,076	4,898	4,868	5,227	27.6	7.4
04	Truman	12,331	13,443	13,154	12,656 **	12,337	0.0	-2.5
02	Washington	8,020	8,310	8,788	9,222	8,918	11.2	-3.3
07	Wilbur-Wright	11,339	13,023	12,718	12,120	12,580	10.9	3.8
507	Danville	2,829	3,360	3,528	3,342	3,214	13.6	-3.8
502	DuPage	26,382	27,982	27,037	27,186	27,823	5.5	2.3
509	Elgin	10,333	11,894	11,943	11,612	11,363	10.0	-2.1
512	Harper	14,495	15,770	15,872	15,425	15,583	7.5	1.0
540	Heartland	4,906	5,103	5,268	5,254	4,780	-2.6	-9.0
519	Highland	2,331	2,842	2,767	2,821	2,566	10.1	-9.0
514	Illinois Central	11,545	12,744	12,491	11,622	10,635	-7.9	-8.5
529	Illinois Eastern	(11,470)	(11,173)	(11,468)	(12,175)	(10,656)	(-7.1)	(-12.5)
04	Frontier	2,694	2,474	2,360	2,077	2,150	-20.2	3.5
01	Lincoln Trail	1,375	1,101	1,006	1,298	1,241	-9.7	-4.4
02	Olney Central	2,077	2,260	2,017	1,819	1,714	-17.5	-5.8
03	Wabash Valley	5,324	5,338	6,085	6,981	5,551	4.3	-20.5
513	Illinois Valley	4,018	4,519	4,396	4,084	3,858	-4.0	-5.5
525	Joliet	14,713	16,140	16,379	16,079	17,706	20.3	10.1
520	Kankakee	3,539	4,154	4,262	4,335	3,601	1.8	-16.9
501	Kaskaskia	5,885	5,966	5,996	5,858	5,671	-3.6	-3.2
523	Kishwaukee	3,825	4,299	4,312	4,393	4,298	12.4	-2.2
532	Lake County	16,987	18,567	18,602	18,454	18,756	10.4	1.6
517	Lake Land	7,788	9,069	8,557	9,352	6,564 ***	-15.7	-29.8
536	Lewis & Clark	8,338	8,506	8,587	8,623	8,630	3.5	0.1
526	Lincoln Land	7,181	8,276	7,774	7,593	7,637	6.4 %	0.6 %

SOURCE OF DATA: Spring Semester Enrollment Surveys

Illinois Community College Board
Table 2
(Continued)
SUMMARY COMPARISON OF SPRING HEADCOUNT ENROLLMENTS
BY COLLEGE, FISCAL YEARS 2009 - 2013

Dist. No.	College Name	Spring FY 2009 Headcount	Spring FY 2010 Headcount	Spring FY 2011 Headcount	Spring FY 2012 Headcount	Spring FY 2013 Headcount	Spring % Change 2009-2013	Spring % Change 2012-2013
530	Logan	6,287	7,162	7,217	6,867	6,708	6.7 %	-2.3 %
528	McHenry	5,749	7,381	7,411	7,024	6,550	13.9	-6.7
524	Moraine Valley	18,130	18,772	18,628	17,992	18,171	0.2	1.0
527	Morton	5,012	5,077	4,885	5,541	4,936	-1.5	-10.9
535	Oakton	11,270	11,867	11,935	11,311	11,354	0.7	0.4
505	Parkland	8,843	9,436	8,925	8,853	8,866	0.3	0.1
515	Prairie State	5,602	5,825	5,933	5,824	5,888	5.1	1.1
521	Rend Lake	4,408 **	4,738	4,235	3,940	4,195	-4.8	6.5
537	Richland	3,653	3,868	3,864	3,836	3,620	-0.9	-5.6
511	Rock Valley	8,387	9,172	8,842	8,697	8,178	-2.5	-6.0
518	Sandburg	2,477	2,518	2,378	2,360	2,316	-6.5	-1.9
506	Sauk Valley	2,784	2,860	2,513	2,478	2,436	-12.5	-1.7
531	Shawnee	2,421	2,470	2,667	2,329	2,094	-13.5	-10.1
510	South Suburban	7,309	8,033 **	7,828	7,628	6,692	-8.4	-12.3
533	Southeastern	2,364	2,201	2,163	2,047	2,097	-11.3	2.4
522	Southwestern*	13,981	14,626	13,415	12,548	11,329	-19.0	-9.7
534	Spoon River	2,216	2,193	2,138	2,015	1,989	-10.2	-1.3
504	Triton	15,447	15,102	14,475	14,069 **	13,488	-12.7	-4.1
516	Waubonsee	10,009	10,495	10,461	10,419	11,546	15.4	10.8
539	Wood	2,509	2,807	2,573	2,187	2,090	-16.7 %	-4.4 %
TOTALS/AVERAGES		361,837 **	389,432 **	381,582	373,785 **	366,003	1.2 %	-2.1 %

* Formerly Belleville Area College

** Colleges Provided Revised Figure

*** Decrease at Lake Land College due to change in registration process for DOC students.

SOURCE OF DATA: ICCB Spring Semester Enrollment Survey

Illinois Community College Board
Table 3
SUMMARY COMPARISON OF SPRING FTE ENROLLMENTS
BY COLLEGE, FISCAL YEARS 2009 - 2013

Dist. No. College Name	Spring FY 2009 FTE	Spring FY 2010 FTE	Spring FY 2011 FTE	Spring FY 2012 FTE	Spring FY 2013 FTE	Spring % Change 2009-2013	Spring % Change 2012-2013
503 Black Hawk	3,353	3,619	3,693	3,684	3,593	7.2 %	-2.5 %
508 Chicago	(36,176)	(40,135)	(39,820)	(37,913)	(37,862)	(4.7)	(-0.1)
06 Daley	6,010	5,887	5,479	5,303	6,004	-0.1	13.2
01 Kennedy-King	4,559	4,914	4,349	4,345	4,171	-8.5	-4.0
03 Malcolm X	4,706	5,503	5,478	4,529	4,087	-13.2	-9.8
05 Olive-Harvey	2,723	3,467	3,481	3,433	3,132	15.0	-8.8
04 Truman	6,605	7,399	7,712	6,920	6,683	1.2	-3.4
02 Washington	5,019	5,388	5,766	6,059	6,301	25.5	4.0
07 Wilbur-Wright	6,554	7,577	7,555	7,324	7,484	14.2	2.2
507 Danville	1,640	2,046	2,028	1,878	1,847	12.6	-1.7
502 DuPage	14,573	15,791	15,003	14,782	15,357	5.4	3.9
509 Elgin	5,712	6,684	6,751	6,607	6,453	13.0	-2.3
512 Harper	8,533	9,140	9,319	8,808	8,673	1.6	-1.5
540 Heartland	2,981	3,204	3,292	3,313	2,974	-0.2	-10.2
519 Highland	1,429	1,711	1,659	1,616	1,460	2.2	-9.7
514 Illinois Central	6,688	7,555	7,274	6,613	6,023	-9.9	-8.9
529 Illinois Eastern	(4,069)	(4,262)	(3,719)	(3,752)	(3,554)	(-12.7)	(-5.3)
04 Frontier	808	790	659	647	659	-18.4	1.9
01 Lincoln Trail	676	631	593	623	581	-14.1	-6.7
02 Olney Central	1,158	1,329	1,153	1,052	1,035	-10.6	-1.6
03 Wabash Valley	1,427	1,512	1,314	1,430	1,279	-10.4	-10.6
513 Illinois Valley	2,316	2,771	2,698	2,438	2,249	-2.9	-7.8
525 Joliet	8,615	9,746	9,701	9,461	9,495	10.2	0.4
520 Kankakee	2,091	2,549	2,606	2,475	2,253	7.7	-9.0
501 Kaskaskia	3,456	3,728	3,545	3,435	3,399	-1.6	-1.0
523 Kishwaukee	2,428	2,794	2,876	2,909	2,825	16.4	-2.9
532 Lake County	9,043	10,026	9,919	9,740	9,867	9.1	1.3
517 Lake Land	4,418	5,101	4,855	4,966	3,817 ***	-13.6	-23.1
536 Lewis & Clark	4,292	4,579	4,484	4,390	4,318	0.6	-1.6
526 Lincoln Land	4,178	4,773	4,661	4,554	4,520	8.2 %	-0.7 %

SOURCE OF DATA: Spring Semester Enrollment Surveys

Illinois Community College Board
Table 3
(Continued)
SUMMARY COMPARISON OF SPRING FTE ENROLLMENTS
BY COLLEGE, FISCAL YEARS 2009 - 2013

Dist. No. College Name	Spring FY 2009 FTE	Spring FY 2010 FTE	Spring FY 2011 FTE	Spring FY 2012 FTE	Spring FY 2013 FTE	Spring % Change 2009-2013	Spring % Change 2012-2013
530 Logan	3,691 **	4,166	3,755	3,503	3,548	-3.9 %	1.3 %
528 McHenry	3,266	4,147	4,150	3,867	3,953	21.0	2.2
524 Moraine Valley	10,067	10,742	10,676	10,337	10,054	-0.1	-2.7
527 Morton	2,485	2,809	2,820	2,927	2,748	10.6	-6.1
535 Oakton	6,133	6,309	6,382	6,214	5,949	-3.0	-4.3
505 Parkland	5,623	6,045	5,809	5,605	5,481	-2.5	-2.2
515 Prairie State	2,971	3,386	3,540	3,357	3,511	18.2	4.6
521 Rend Lake	2,453	2,645	2,555	2,285	2,140	-12.8	-6.3
537 Richland	1,854	2,158	2,075	1,939	1,916	3.3	-1.2
511 Rock Valley	4,890	5,549	5,492	5,258	5,052	3.3	-3.9
518 Sandburg	1,488	1,594	1,522	1,470	1,472	-1.1	0.1
506 Sauk Valley	1,542	1,712	1,584	1,434	1,435	-6.9	0.1
531 Shawnee	1,403	1,367	1,493	1,188	1,080	-23.0	-9.1
510 South Suburban	3,719	4,545	4,237	4,196	3,503	-5.8	-16.5
533 Southeastern	1,239	1,308	1,102	1,033	1,151	-7.1	11.4
522 Southwestern*	7,853	8,407	8,108	7,534	7,105	-9.5	-5.7
534 Spoon River	1,218	1,264	1,165	1,150	1,063	-12.7	-7.6
504 Triton	8,282	8,273	7,945	7,511 **	7,010	-15.4	-6.7
516 Waubensee	5,100	5,634	5,756	5,660	5,860	14.9	3.5
539 Wood	1,536	1,802	1,683	1,445	1,377	-10.4 %	-4.7 %
TOTALS/AVERAGES	202,804 **	224,076	219,752	211,247 **	205,947	1.5 %	-2.5 %

* Formerly Belleville Area College

** Colleges Provided Corrected Figure

*** Decrease at Lake Land College due to change in registration process for DOC students.

SOURCE OF DATA: Spring Semester Enrollment Surveys

Illinois Community College Board
Table 4
PRELIMINARY OPENING SPRING INTERNET ENROLLMENT, DUPLICATED COUNT
BY COLLEGE, FISCAL YEARS 2009 - 2013

Dist. No.	College Name	Spring 2009	Spring 2010	Spring 2011	Spring 2012	Spring 2013	Spring % Change 2009-2013	Spring % Change 2012-2013
503	Black Hawk	1,843	1,973	2,162	2,650	2,712	47.2 %	2.3 %
508	Chicago	(5,428)	(6,344)	(7,419)	(7,939)	(8,672)	(59.8)	(9.2)
06	Daley	620	700	840	844	1,085	75.0	28.6
01	Kennedy-King	653	729	882	785	901	38.0	14.8
03	Malcolm X	535	679	769	891	939	75.5	5.4
05	Olive-Harvey	446	575	726	748	799	79.1	6.8
04	Truman	745	966	1,130	1,318	1,260	69.1	-4.4
02	Washington	1,530	1,594	1,766	1,832	2,199	43.7	20.0
07	Wilbur-Wright	899	1,101	1,306	1,521	1,489	65.6	-2.1
507	Danville	1,445	1,489	1,487	1,637	1,913	32.4	16.9
502	DuPage	4,712	7,415	7,944	8,514	9,598	103.7	12.7
509	Elgin	2,042	2,836	2,838	3,106	2,789	36.6	-10.2
512	Harper	1,848	3,716	4,551	4,308	1,809	-2.1	-58.0
540	Heartland	1,179	1,610	1,438	1,940	1,989	68.7	2.5
519	Highland	563	822	971	933	954	69.4	2.3
514	Illinois Central	3,538	3,905	3,928	4,406	4,423	25.0	0.4
529	Illinois Eastern	(1,353)	(1,567)	(1,401)	(1,204)	(1,461)	(8.0)	(21.3)
04	Frontier	101	106	126	81	69	-31.7	-14.8
01	Lincoln Trail	410	415	405	388	482	17.6	24.2
02	Olney Central	566	739	700	599	734	29.7	22.5
03	Wabash Valley	276	307	170	136	176	-36.2	29.4
513	Illinois Valley	806	1,118	1,169	1,169	1,475	83.0	26.2
525	Joliet	2,499	3,572	4,186	4,692	5,081	103.3	8.3
520	Kankakee	1,490	2,013	1,315	1,192	1,173	-21.3	-1.6
501	Kaskaskia	2,814	3,742	3,353	3,724	3,258	15.8	-12.5
523	Kishwaukee	1,877	2,199	2,096	2,378	2,164	15.3	-9.0
532	Lake County	3,484	4,122	3,909	4,280	4,429	27.1	3.5
517	Lake Land	1,806	5,034	3,720	3,709	3,721	106.0	0.3
536	Lewis & Clark	2,134	2,099	1,904	1,456	1,538	-27.9	5.6
526	Lincoln Land	2,416	2,643	2,949	3,069	2,902	20.1 %	-5.4 %

SOURCE OF DATA: Spring Semester Enrollment Surveys

Illinois Community College Board

**Table 4
(Continued)**

**PRELIMINARY OPENING SPRING INTERNET ENROLLMENT, DUPLICATED COUNT
BY COLLEGE, FISCAL YEARS 2009 - 2013**

Dist. No.	College Name	Spring 2009	Spring 2010	Spring 2011	Spring 2012	Spring 2013	Spring % Change 2009-2013	Spring % Change 2012-2013
530	Logan	1,917	2,547	2,474	2,562	2,480	29.4 %	-3.2 %
528	McHenry	1,481	1,632	1,597	1,851	1,636	10.5	-11.6
524	Moraine Valley	2,784	3,110	3,100	3,376	3,022	8.5	-10.5
527	Morton	283	545	583	566	590	108.5	4.2
535	Oakton	1,925	2,718	2,951	3,334	3,716	93.0	11.5
505	Parkland	4,816	5,289	5,080	4,933	4,789	-0.6	-2.9
515	Prairie State	909	1,072	1,080	797	989	8.8	24.1
521	Rend Lake	860	886	888	893	931	8.3	4.3
537	Richland	1,097	1,306	1,468	1,398	1,173	6.9	-16.1
511	Rock Valley	1,141	1,536	1,332	1,394	1,360	19.2	-2.4
518	Sandburg	824	1,086	1,081	1,039	1,261	53.0	21.4
506	Sauk Valley	870	1,039	1,109	962	979	12.5	1.8
531	Shawnee	649	726	752	740	803	23.7	8.5
510	South Suburban	1,271	1,310	1,865	1,225	984	-22.6	-19.7
533	Southeastern	1,361	1,572	1,346	1,155	1,239	-9.0	7.3
522	Southwestern	2,522	2,798	3,179	3,384	3,457	37.1	2.2
534	Spoon River	370	743	811	683	1,111	200.3	62.7
504	Triton	3,321	3,704	3,803	4,202	3,251	-2.1	-22.6
516	Waubonsee	3,621	4,115	4,459	4,522	4,642	28.2	2.7
539	Wood	921	1,035	1,037	1,155	1,128	22.5 %	-2.3 %
TOTALS/AVERAGES		76,220	96,988	98,735	102,477	101,602	33.3 %	-0.9 %

SOURCE OF DATA: Spring Semester Enrollment Surveys