



---

**DUAL CREDIT  
IN THE  
ILLINOIS COMMUNITY COLLEGE SYSTEM**

**FISCAL YEAR 2019**

---



***March 2020***

Compiled by ICCB

Nathan R. Wilson, Deputy Director for Academic and Institutional Effectiveness

Jay Brooks, Senior Director for Research and Policy Studies

Michelle Dufour, Associate Director for Research and Policy Studies

Jana Ferguson, Associate Director for Research and Policy Studies

---

**TABLE OF CONTENTS**

---

<b>Introduction.....</b>	<b>4</b>
<b>Dual Credit Definition and Illinois Legislative Background .....</b>	<b>5</b>
<b>Characteristics of Dual Credit Students (unduplicated) .....</b>	<b>6</b>
<i>OVERALL HEADCOUNT .....</i>	<i>6</i>
<i>CHARACTERISTICS OF GENDER AND RACE/ETHNICITY .....</i>	<i>6</i>
<i>CREDIT HOURS ENROLLED BY DUAL CREDIT STUDENTS.....</i>	<i>7</i>
<i>GEOGRAPHIC REGION.....</i>	<i>8</i>
<b>Dual Credit Course Count and Enrollment (duplicated) .....</b>	<b>9</b>
<i>OVERALL COURSE COUNT AND ENROLLMENT.....</i>	<i>9</i>
<i>TRANSFER VERSUS CAREER AND TECHNICAL EDUCATION.....</i>	<i>10</i>
<i>INSTRUCTIONAL SITE .....</i>	<i>13</i>
<b>Bibliography .....</b>	<b>14</b>
<b>Appendix A &amp; B Table Listing .....</b>	<b>15</b>
<b>Appendix C Illinois Community Colleges by Geographic Regions.....</b>	<b>16</b>

**Suggested Citation:**

Illinois Community College Board. (2020). *Dual Credit in the Illinois Community College System in Fiscal Year 2019*. Springfield, IL: Author.

---

## INTRODUCTION

---

Dual credit instruction allows academically prepared high school students to simultaneously earn credits that count toward a high school diploma and a college degree. Dual credit instruction delivers a “win-win” arrangement for all parties: students gain access to challenging college-level coursework to make their junior and senior years of high school more productive; students can prove to others and themselves that they have the ability to succeed in college; college costs can be reduced for parents and students; time to degree at college can be shortened; and the enhanced high school and college faculty dialogue can contribute to a better alignment between secondary and postsecondary education. Consequently, as dual credit instruction has a positive impact on postsecondary completion, there is a growing emphasis among policy makers on the value of dual credit enrollment for all students and especially those who are traditionally underserved in higher education.

Highlights of Dual Credit in Fiscal Year 2019:

- In Illinois, during fiscal year 2019, a total of 64,106 individual (i.e., “unduplicated”) high school students enrolled in one or more community college dual credit courses.
- One in eight students (12.8 percent) taking one or more Illinois community college credit courses was a high school dual credit student.
- Illinois community colleges offered a total of 11,905 dual credit courses in fiscal year 2019, which was an increase of 5.6 percent from the previous year (N = 11,270).
- Overall, in fiscal year 2019, dual credit duplicated (seat count) enrollment (N = 124,614) increased 5.9 percent compared to one year ago (N = 117,672).

Data for this report derive from the Illinois Community College Board’s (ICCB) Centralized Data System and, specifically, the Annual Student Enrollment and Completion (A1) student-level submission (Appendix A Tables) and Annual Course Data (AC) student-level submission (Appendix B Tables) from Illinois community colleges. Information from the **A1 submission** is used in the report to describe the characteristics of high school students who enrolled in dual credit courses. A1 data are required for all students who are officially enrolled in a credit course at an Illinois community college any time during the specified fiscal year. A1 enrollments are **unduplicated** end-of-year counts. Duplicated enrollment and course data derive from ICCB **AC submissions**. AC enrollments are **duplicated**, meaning students are counted for each course they enroll in (e.g., a student enrolling in three dual credit courses is counted as three enrollments). The AC record submission includes dual credit identifier information that is used to generate dual credit course counts, enrollments, and average class sizes. For Illinois community colleges, student-level data is collected by ICCB for each fiscal year. A fiscal year represents student activity in a July 1 through June 30 academic year.

---

## DUAL CREDIT DEFINITION AND ILLINOIS LEGISLATIVE BACKGROUND

---

Dual credit is an instructional arrangement where an academically qualified high school student enrolls in a college-level course and, upon successful course completion, concurrently earns both college credit and high school credit. Dual credit reflects strong and well established secondary-to-postsecondary articulation and alignment.

The Dual Credit Quality Act ([Public Act 96-0194](#)) was approved by the governor on August 10, 2009, with an effective date of January 1, 2010. The Act required the ICCB and the Board of Higher Education (IBHE) to develop policies regarding dual credit. In 2018, the Dual Credit Quality Act was significantly amended outlining specific, required elements within dual credit partnership agreements and limiting out-of-state dual credit offerings. Although the general purpose of the Act remains the same, the Act gives school districts a greater ability to offer dual credit courses to students, as it requires a local community college to agree to offer such courses if a school district requests them. The law includes an “Illinois-first” clause that prohibits school districts from offering dual credit courses from out-of-state institutions without first asking an Illinois college if the same courses are offered there. The law helps to make college more affordable. The newly amended Dual Credit Quality Act ([PA-100-1049](#)) took effect January 1, 2019. Additionally, as part of the newly amended Dual Credit Quality Act and to advance dual credit in Illinois, ICCB and the Illinois State Board of Education (ISBE) established a committee and developed a [Model Partnership Agreement \(MPA\)](#) addressing the parameters of local school district-community college partnerships to offer dual credit (should the stakeholders not be able to reach agreement). The Agreement guides local partnerships between school districts and community colleges necessary for the successful implementation of quality dual credit courses and related student supports.

The instructors for dual credit courses shall be selected, employed and evaluated by the postsecondary institution. Qualified instructors must hold the appropriate credentials and demonstrate teaching competencies. [The ICCB Administrative Rules](#) [Section 1501.507 (11)] outlines these minimally acceptable standards. Dual credit instructors must be able to participate in all activities available to adjunct faculty [[\(110 ILCS 27/\) Dual Credit Quality Act](#)]. ICCB, ISBE, and IBHE also collaborated to create a new endorsement for nine dual credit disciplines. A Dual Credit Endorsement, as designated by the newly amended Dual Credit Quality Act, is an endorsement valid for educators in grades 11-12 to be placed on the [Professional Educator License \(PEL\)](#) at the request of an instructor who meets the appropriate credential standards.

Also taking effect on January 1, 2019, [PA-100-0792](#) amends the Illinois School Code by prohibiting a school board from capping the number of courses or credits a student can earn via dual credit if the courses are taught by an Illinois Instructor.

---

**CHARACTERISTICS OF DUAL CREDIT STUDENTS (UNDUPLICATED)**


---

**OVERALL HEADCOUNT**

The Illinois Community College System recorded a total of 64,106 high school students enrolled in dual credit courses during fiscal year 2019. Currently, **all** Illinois community colleges offer dual credit courses. **Table 1** provides the comparison of annual dual credit headcount enrollments in Illinois public community colleges in fiscal years 2015 through 2019. Annual dual credit enrollments increased 8.6 percent compared to the previous year (N = 59,039) and 24.0 percent compared to five years ago (N = 51,718). Among Illinois' 48 colleges, 22 colleges reported more than 1,000 dual credit enrollments in fiscal year 2019. College of DuPage reported the most dual credit enrollments (N = 5,771), followed by Joliet Junior College (N = 4,560) and Harper College (N = 3,915) (Appendix Table A-1).

*Each of the 48 community colleges in Illinois provided dual credit courses in fiscal year 2019.*

High school students enrolled in dual credit courses comprised **12.8 percent of all credit enrollment** (N = 500,477) at Illinois community colleges in fiscal year 2019. Dual credit students comprised more than twenty percent of all credit enrollments in eight Illinois community colleges, more than ten percent in 31 colleges, and fewer than five percent in five colleges. Lewis and Clark Community College reported the largest proportion of dual credit enrollment in comparison to the college's total credit enrollment in fiscal year 2019 (43.0 percent), followed by Kaskaskia College (39.1 percent) and Highland Community College (26.6 percent) (Appendix Table A-2).

**Table 1**  
**Comparison of Annual Dual Credit Enrollments in Illinois Public Community Colleges**  
**Fiscal Years 2015-2019**

	FY 2015	FY 2016	FY 2017	FY 2018	FY 2019
Headcount	51,718	54,871	57,897	59,039	64,106
% Change	3.2%	6.1%	5.5%	2.0%	8.6%

**SOURCE OF DATA: ICCB Centralized Data System—Annual Enrollment and Completion (A1) Data**

**CHARACTERISTICS OF GENDER AND RACE/ETHNICITY**

Overall, **Table 2** shows nearly equal proportions of female (51.8 percent) and male (48.2 percent) high school students enrolled in community college courses in fiscal year 2019 (Appendix Table A-3).

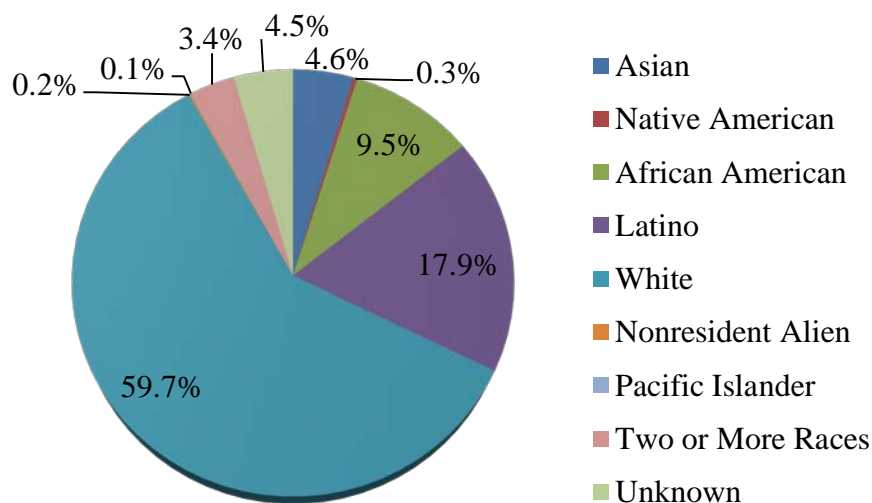
**Table 2**  
**Dual Credit Enrollment by Gender in Fiscal Year 2019**

Gender	Number	Percent
Male	30,922	48.2%
Female	33,184	51.8%
Total	64,106	100.0%

**SOURCE OF DATA: ICCB Centralized Data System—Annual Enrollment and Completion (A1) Data**

**Figure 1** depicts the race/ethnicity of high school students enrolling in community college dual credit courses in fiscal year 2019. Nearly one out of six dual credit students were White (59.7 percent). Latino dual credit students accounted for 17.9 percent and African American students for 9.5 percent in fiscal year 2019. Students identifying themselves as Asian (4.6 percent), Two or More Races (3.4 percent), Native American (0.3 percent), Nonresident Alien (0.2 percent), and Pacific Islander (0.1 percent) represented a small portion of dual credit students (Appendix Table A-4). Dual credit participation was lower among minority high school students than White high school students in fiscal year 2019. Out of 224,158 minority students (whose ethnicity was known) enrolled in credit coursework in Illinois public community colleges in fiscal year 2019, 10.2 percent of students were enrolled in dual credit courses (N=22,951). In comparison, out of 256,235 White students enrolled in credit coursework in Illinois public community colleges in fiscal year 2019, 14.9 percent of students were enrolled in dual credit courses (N=38,287).

**Figure 1**  
**Race/Ethnicity of High School Students Taking Dual Credit Courses in Fiscal Year 2019**

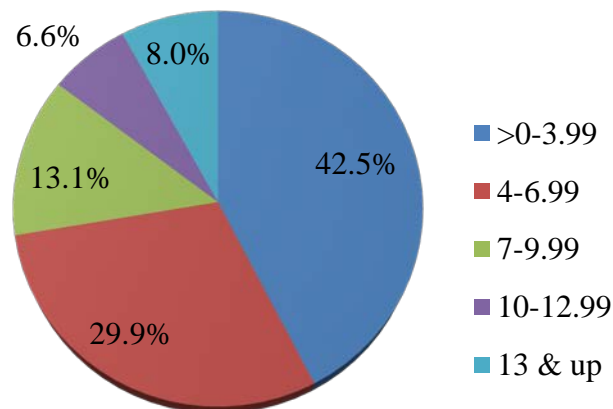


**SOURCE OF DATA: ICCB Centralized Data System—Annual Enrolment and Completion (A1) Data**

## CREDIT HOURS ENROLLED BY DUAL CREDIT STUDENTS

**Figure 2** displays dual credit enrollment by number of enrolled credit hours in fiscal year 2019. Of the 64,106 high school students that enrolled in dual credit coursework in fiscal year 2019, four out of ten students (42.5 percent) enrolled in college-level coursework of fewer than four credit hours, three out of ten students (29.9 percent) enrolled in between four and fewer than seven credit hours, one out of five students (19.7 percent) enrolled in between seven and fewer than thirteen credit hours, and one out of twelve students (8.0 percent) enrolled in 13 or more credit hours of college-level coursework in fiscal year 2019 (Appendix Table A-5).

**Figure 2**  
**Dual Credit Headcount Enrollment by Number of Enrolled Hours**  
**Fiscal Year 2019**

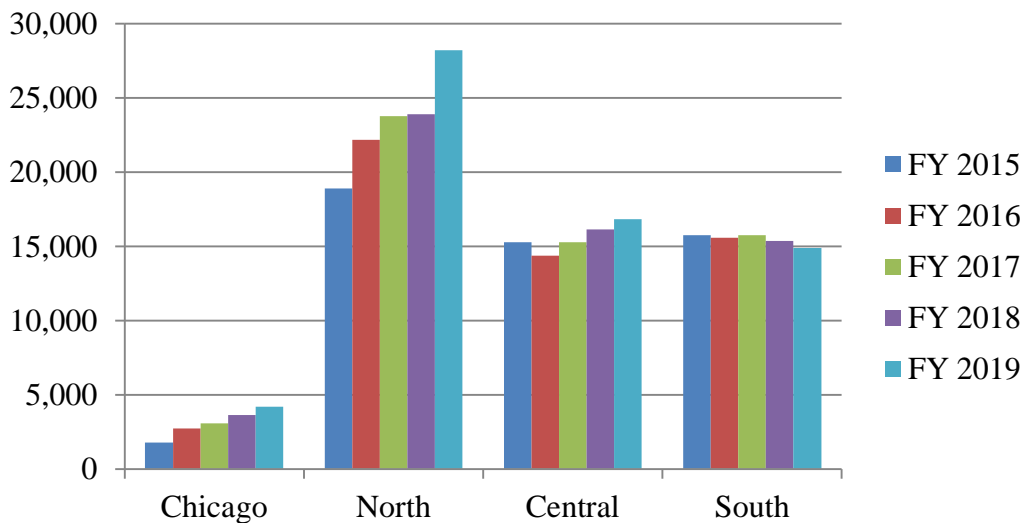


SOURCE OF DATA: ICCB Centralized Data System—Annual Enrollment and Completion (A1) Data

## GEOGRAPHIC REGION

**Figure 3** compares dual credit enrollment by geographic region. Illinois community colleges in the North region (N = 28,202) had the most dual credit students in fiscal year 2019 followed by the geographic regions of Central (N = 16,834), South (N = 14,882), and Chicago (N = 4,188). From fiscal year 2015 to 2019, the largest increase in dual credit occurred in Chicago (+135.7 percent) followed by North (+49.3 percent), and Central (+10.1 percent), while South experienced a decrease in dual credit enrollment (-5.5 percent). The list of colleges in each geographic region is provided in Appendix C.

**Figure 3**  
**Dual Credit Enrollment by Geographic Region in Fiscal Years 2015-2019**



SOURCE OF DATA: ICCB Centralized Data System—Annual Enrollment and Completion (A1) Data



---

**DUAL CREDIT COURSE COUNT AND ENROLLMENT (DUPLICATED)**


---

In the following portion of the report, dual credit course count and enrollment data are organized by broad programmatic area based on the Program Classification Structure (PCS).

**OVERALL COURSE COUNT AND ENROLLMENT**

Illinois community colleges offered a total of 11,905 dual credit courses (duplicated) in fiscal year 2019, which was an increase of 5.6 percent from the previous year (N = 11,270). Dual credit courses accounted for 8.4 percent of all credit courses (N = 140,928) and 10.3 percent of all Transfer or Career and Technical Education courses in fiscal year 2019 (N = 115,731). Appendix Table B-1 provides dual credit course count in fiscal years 2015 through 2019 for each community college. Southwestern Illinois College reported the most dual credit courses (N = 1,160), followed by Rock Valley College (N = 702) and Lewis and Clark Community College (N = 533). Compared with the previous year, 26 colleges reported an increase in the number of dual credit courses, while 17 reported decreases, and five reported little or no change (less than one percent).

Duplicated dual credit course enrollments totaled 124,614 in fiscal year 2019, which was an increase of 5.9 percent compared to 2018 (N = 117,672). Among Illinois' community colleges, 27 colleges reported increases in dual credit enrollments, while 18 colleges exhibited decreases in comparison to fiscal year 2018. Three colleges experienced little or no change (less than one percent). Dual credit course enrollment accounted for 7.3 percent of all credit course enrollments (N = 1,717,907) and 8.3 percent of all Transfer or Career and Technical Education credit course enrollments (N = 1,500,410) in fiscal year 2019. Lewis and Clark Community College reported the most dual credit enrollments (N = 8,842) in fiscal year 2019, followed by College of DuPage (N = 8,031) and Southwestern Illinois College (N = 7,709) (Appendix Table B-2).

*More than one hundred twenty-four thousand enrollments occurred across dual credit courses in fiscal year 2019.*

As seen in **Table 3**, the average dual credit class size was 10.5 students per class in fiscal year 2019, a 0.3 percent increase from 2018 (N = 10.4). The average dual credit class size ranged from 4.4 students at Rock Valley College to 19.6 students at Illinois Central College in fiscal year 2019 (Appendix Table B-3).

**Table 3**  
**Dual Credit Course Count, Enrollment (Duplicated), and Average Class Size**  
**Fiscal Years 2015-2019**

	<b>2015</b>	<b>2016</b>	<b>2017</b>	<b>2018</b>	<b>2019</b>
Number of Courses	9,986	10,740	10,994	11,270	11,905
Number of Enrollments	99,343	105,361	111,643	117,672	124,614
Average Class Size	9.9	9.8	10.2	10.4	10.5

**Source of Data: ICCB Centralized Data System—Annual Course (AC) Data**

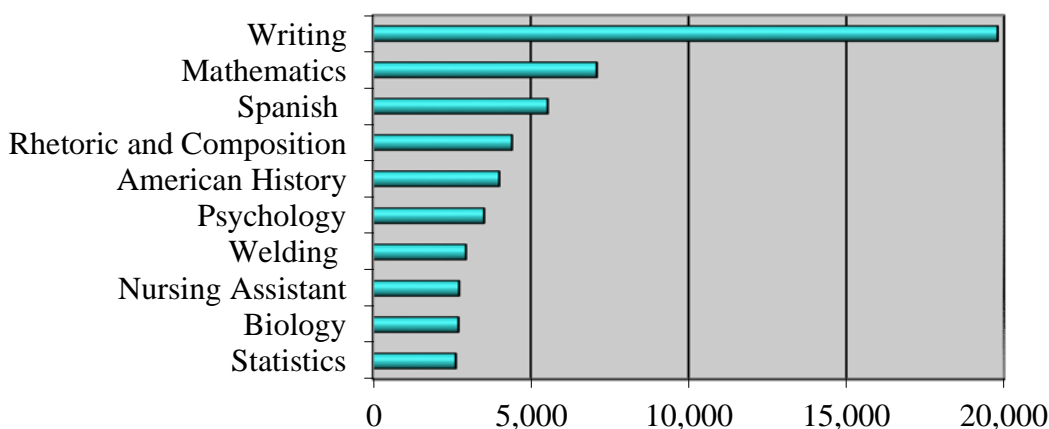
The five highest dual credit course enrollments by program area (2-digit CIP) in fiscal year 2019 were in English Language and Literature/Letters (N = 25,582); Mathematics and Statistics (N =

11,567); Business Management, Marketing, and Related Supportive Services (N = 10,931); Health Professions and Related Programs (N = 8,206); and Computer and Information Sciences and Support Services (N = 6,319) (Appendix Table B-14).

Appendix Table B-15 provides statewide dual credit course enrollment by Career Cluster. The top five Career Clusters in fiscal year 2019 were Arts, Audio/Video Technology and Communications (N = 30,618); Science, Technology, Engineering and Mathematics (N = 24,941); Education and Training (N = 14,722); Health Science (N = 11,556); and Business Management and Administration (N = 9,745). The Career Cluster brand is a registered trademark of [Advance CTE](#).

Course enrollments in the ten largest programs accounted for 44.4 percent (N = 55,368) of all dual credit course enrollments in fiscal year 2019. As depicted in **Figure 4**, the ten highest dual credit enrollments overall by 6-digit Classification of Instructional Programs (CIP) code in academic year 2019 were in Writing, General, which was formerly reported under English Composition (N = 19,798); Mathematics, General (N = 7,093); Spanish Language and Literature (N = 5,538); Rhetoric and Composition, which was formerly reported under Speech and Rhetorical Studies (N = 4,406); American History (United States) (N = 4,002); Psychology, General (N = 3,522); Welding Technology/Welder (N = 2,945); Nursing Assistant/Aide and Patient Care Assistant/Aide (N = 2,730); Biology/Biological Sciences, General (N = 2,709); and Statistics, General (N = 2,625). Eight out of the ten largest programs experienced increases from 2018 (Appendix Table B-4).

**Figure 4**  
**Top Ten Dual Credit Course Enrollments in Fiscal Year 2019**

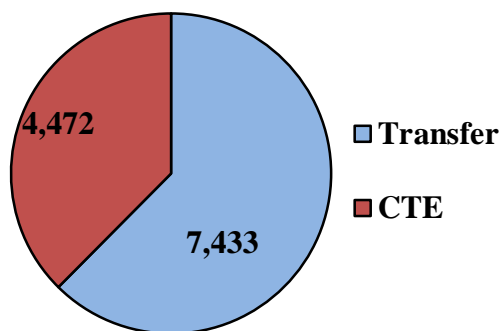


Source of Data: ICCB Centralized Data System—Annual Course (AC) Data

## TRANSFER VERSUS CAREER AND TECHNICAL EDUCATION

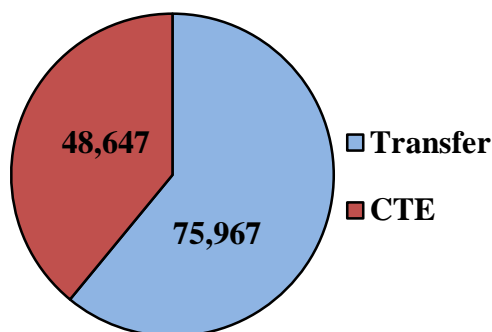
**Figure 5** and **Figure 6** depict dual credit course count and enrollment in Transfer courses and Career and Technical Education (CTE) courses in fiscal year 2019.

**Figure 5**  
**Dual Credit Course Count in Fiscal Year 2019**



Source of Data: ICCB Centralized Data System—Annual Course (AC) Data

**Figure 6**  
**Dual Credit Course Enrollment in Fiscal Year 2019**



Source of Data: ICCB Centralized Data System—Annual Course (AC) Data

As **Table 4** shows, Illinois community colleges offered 7,433 Transfer dual credit courses in fiscal year 2019 (Appendix Table B-5), which was 62.4 percent of all dual credit courses offered. This is a 7.4 percent increase compared to the previous year (N = 6,920). The average dual credit class size in Transfer education was 10.2 students in fiscal year 2019 (Appendix Table B-7).

**Table 4**  
**Transfer and CTE Dual Credit Course Count in Fiscal Years 2015-2019**

	2015	2016	2017	2018	2019
Transfer	6,112	6,775	6,804	6,920	7,433
CTE	3,874	3,965	4,190	4,350	4,472
Total	9,986	10,740	10,994	11,270	11,905

Source of Data: ICCB Centralized Data System—Annual Course (AC) Data

As seen in **Table 5**, Transfer dual credit course enrollments (Appendix Table B-6) accounted for 61.0 percent of all dual credit course enrollments in fiscal year 2019. Enrollments in this area increased to 75,967 in fiscal year 2019, an increase of 4.0 percent from 2018 (N = 73,050). Appendix Table B-8 shows the top five enrollments in Transfer courses: Writing, General (N =

19,751); Mathematics, General (N = 7,093); Spanish Language and Literature (N = 5,538); Rhetoric and Composition (N = 4,388); and American History (United States) (N = 4,002). Enrollments in these five courses accounted for 32.7 percent of all dual credit enrollments in fiscal year 2019.

**Table 5**

**Dual Credit Course Enrollment (Duplicated) in Transfer and CTE Courses  
Fiscal Years 2015-2019**

	2015	2016	2017	2018	2019
Transfer	61,698	66,118	69,066	73,050	75,967
CTE	37,645	39,243	42,577	44,622	48,647
Total	99,343	105,361	111,643	117,672	124,614

Source of Data: ICCB Centralized Data System—Annual Course (AC) Data

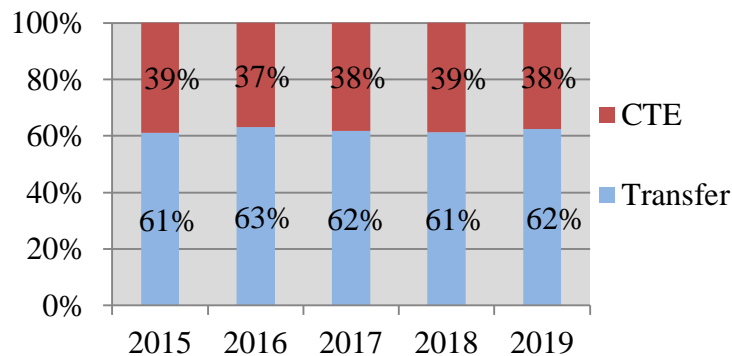
The Career and Technical Education dual credit course count was 4,472 in fiscal year 2019, which was 37.6 percent of all dual credit courses offered. This is an increase of 2.8 percent from fiscal year 2018 (N = 4,350) (Appendix Table B-9). The average dual credit class size in this area was 10.9 students in fiscal year 2019 (Appendix Table B-11).

Dual credit course enrollments in Career and Technical Education increased to 48,647 in fiscal year 2019, which is a 9.0 percent increase over fiscal year 2018 (N = 44,622). Appendix Table B-12 shows that the highest enrollments in this area were in Welding Technology/Welder (N = 2,945); Nursing Assistant/Aide and Patient Care Assistant/Aide (N = 2,730); Business/Office Automation/Technology/Data Entry (N = 2,525); Computer Programming/Programmer, General (N = 2,391); and Medical Office Assistant/Specialist (N = 2,269). Enrollments in these five courses accounted for 10.3 percent of all dual credit enrollments in fiscal year 2019.

**Figure 7** and **Figure 8** depict the proportion of Transfer and Career and Technical Education dual credit course counts and enrollments in fiscal years 2015 through 2019. The proportion of Transfer to CTE remained steady across the five years.

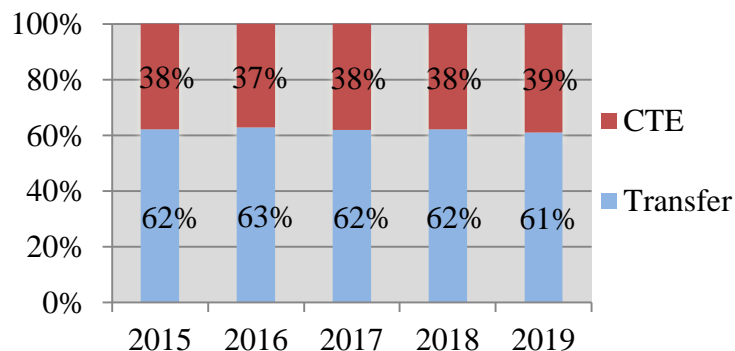
**Figure 7**

**Dual Credit Course Count in Fiscal Years 2015-2019**



Source of Data: ICCB Centralized Data System—Annual Course (AC) Data

**Figure 8**  
**Dual Credit Course Enrollment in Fiscal Years 2015-2019**

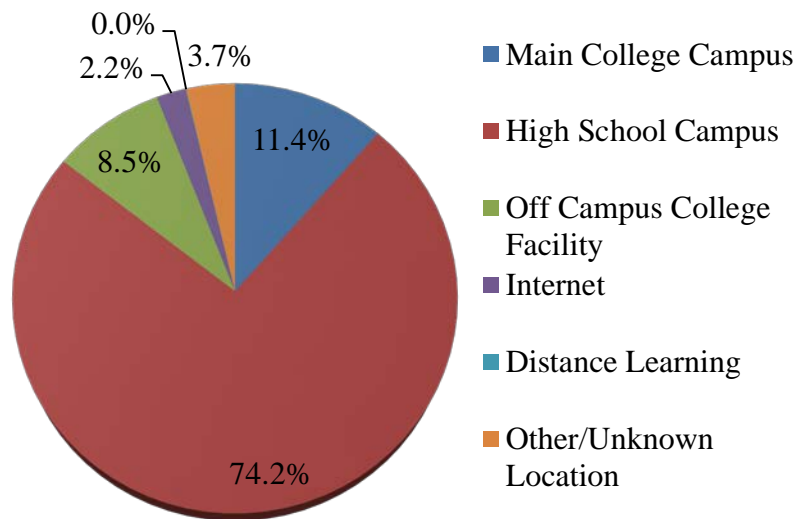


Source of Data: ICCB Centralized Data System—Annual Course (AC) Data

## INSTRUCTIONAL SITE

**Figure 9** displays dual credit enrollment by instructional site. In fiscal year 2019, nearly three out of four high school dual credit students (74.2 percent) enrolled in dual credit courses at the high school campus. One out of five high school dual credit students attended a main college campus (11.4 percent) or an off campus college facility (8.5 percent). The remaining 5.9 percent of dual credit students either chose online/distance education classes (2.2 percent), or some other/unknown location (3.7 percent) to enroll in dual credit courses (Appendix Table B-16).

**Figure 9**  
**Dual Credit Enrollment by Instructional Site in Fiscal Year 2019**



Source of Data: ICCB Centralized Data System—Annual Course (AC) Data

---

## BIBLIOGRAPHY

---

- Advance CTE: State Leaders Connecting Learning to Work. (2020). Career Clusters. Silver Spring, Maryland. <https://careertech.org/career-clusters>
- Illinois 96<sup>th</sup> General Assembly. (2009). Higher Education (096-0194) Dual Credit Quality Act. Springfield, IL: Illinois General Assembly. <http://www.ilga.gov/legislation/publicacts/fulltext.asp?Name=096-0194>
- Illinois 100<sup>th</sup> General Assembly (2018). Higher Education (110 ILCS 27/) Dual Credit Quality Act. Springfield, IL: Illinois General Assembly. <http://www.ilga.gov/legislation/ilcs/ilcs3.asp?ActID=3117&ChapterID=18>
- Illinois 100<sup>th</sup> General Assembly. (2018). Public Act 100-0792. Springfield, IL: Illinois General Assembly. <http://www.ilga.gov/legislation/publicacts/fulltext.asp?Name=100-0792>
- Illinois 100<sup>th</sup> General Assembly. (2018). Public Act 100-1049. Springfield, IL: Illinois General Assembly. <http://www.ilga.gov/legislation/publicacts/fulltext.asp?Name=100-1049>
- Illinois Community College Board. (December 2019). Administrative Rules of the Illinois Community College Board. Springfield, IL: Illinois Community College Board. [https://www.iccb.org/iccb/wp-content/pdfs/manuals/ICCB\\_SystemRules\\_Manual.pdf](https://www.iccb.org/iccb/wp-content/pdfs/manuals/ICCB_SystemRules_Manual.pdf)
- Illinois Community College Board. (2020). Dual Credit. Springfield, IL: Illinois Community College Board. <https://www.iccb.org/cte/dual-credit/>
- Illinois State Board of Education. (2020). Professional Educator License. Springfield, IL: Illinois State Board of Education. <https://www.isbe.net/Pages/Professional-Educator-License.aspx>

---

**APPENDIX A**

---

*Unduplicated Enrollment Counts*

- A-1 Dual Credit Headcount Enrollment by College, FY 2014-2019
- A-2 Dual Credit Headcount Enrollment vs. Overall Credit Enrollment by College, FY 2019
- A-3 Dual Credit Headcount Enrollment by Gender and by College, FY 2019
- A-4 Dual Credit Headcount Enrollment by Ethnic Origin and by College, FY 2019
- A-5 Dual Credit Headcount Enrollment by Number of Enrolled Hours and by College, FY 2019

---

**APPENDIX B**

---

*Duplicated Course and Enrollment Counts*

- B-1 Dual Credit Course Count by College, FY 2015-2019
- B-2 Dual Credit Course Enrollment by College, FY 2015-2019
- B-3 Average Dual Credit Class Size by College, FY 2015-2019
- B-4 Top 10 Dual Credit Course Enrollments by CIP, FY 2015-2019
- B-5 Dual Credit Course Count by College in Transfer Education, FY 2015-2019
- B-6 Dual Credit Course Enrollment by College in Transfer Education, FY 2015-2019
- B-7 Average Dual Credit Class Size by College in Transfer Education, FY 2015-2019
- B-8 Top 5 Dual Credit Course Enrollments by College in Transfer Education, FY 2019
- B-9 Dual Credit Course Count by College in Career and Technical Education, FY 2015-2019
- B-10 Dual Credit Course Enrollment by College in Career and Technical Education, FY 2015-2019
- B-11 Average Dual Credit Class Size by College in Career and Technical Education, FY 2015-2019
- B-12 Top 5 Dual Credit Course Enrollments by College in Career and Technical Education, FY 2019
- B-13 Dual Credit Course Enrollment by 6-digit CIP, FY 2015-2019
- B-14 Dual Credit Course Enrollment by 2-digit CIP, FY 2015-2019
- B-15 Dual Credit Course Enrollment by Career Cluster, FY 2015-2019
- B-16 Dual Credit Course Enrollment by Instructional Site and by College, FY 2019

---

APPENDIX C

---

*Illinois Community Colleges by Geographic Regions*

**Chicago:** Harold Washington College, Harry S Truman College, Kennedy-King College, Malcolm X College, Olive-Harvey College, Richard J. Daley College, Wilbur Wright College

**North:** College of DuPage, College of Lake County, Elgin Community College, Harper College, Highland Community College, Kishwaukee College, McHenry County College, Moraine Valley Community College, Morton College, Oakton Community College, Prairie State College, Rock Valley College, Sauk Valley Community College, South Suburban College, Triton College, Waubensee Community College

**Central:** Black Hawk College, Carl Sandburg College, Danville Area Community College, Heartland Community College, Illinois Central College, Illinois Valley Community College, John Wood Community College, Joliet Junior College, Kankakee Community College, Lincoln Land Community College, Parkland College, Richland Community College, Spoon River College

**South:** Frontier Community College, John A. Logan College, Kaskaskia College, Lake Land College, Lewis and Clark Community College, Lincoln Trail College, Olney Central College, Rend Lake College, Shawnee Community College, Southeastern Illinois College, Southwestern Illinois College, Wabash Valley College





Illinois Community College Board  
Table A-1  
DUAL CREDIT HEADCOUNT ENROLLMENT BY COLLEGE  
FISCAL YEARS 2015-2019

Dist. <u>No. District/College</u>	<u>FY 2015 Headcount</u>	<u>FY 2016 Headcount</u>	<u>FY 2017 Headcount</u>	<u>FY 2018 Headcount</u>	<u>FY 2019 Headcount</u>	<u>% Change 2015-2018</u>	<u>% Change 2018-2019</u>
503 Black Hawk	1,372	1,271	1,258	1,172	1,277	-6.9%	9.0%
518 Carl Sandburg	454	434	431	583	568	25.1%	-2.6%
508 City Colleges of Chicago	(1,777)	(2,736)	(3,083)	(3,655)	(4,188)	(135.7%)	(14.6%)
02 Harold Washington	223	388	508	685	615	175.8%	-10.2%
04 Harry S Truman	327	353	269	262	263	-19.6%	0.4%
01 Kennedy-King	133	173	235	290	438	229.3%	51.0%
03 Malcolm X	118	217	303	387	506	328.8%	30.7%
05 Olive-Harvey	186	300	348	376	388	108.6%	3.2%
06 Richard J. Daley	412	628	703	702	951	130.8%	35.5%
07 Wilbur Wright	378	677	717	953	1,027	171.7%	7.8%
502 College of DuPage	4,874	5,248	5,387	5,084	5,771	18.4%	13.5%
532 College of Lake County	1,292	1,217	1,366	1,324	1,343	3.9%	1.4%
507 Danville Area	1,431	1,588	939	913	973	-32.0%	6.6%
509 Elgin	970	973	289	285	349	-64.0%	22.5%
512 Harper	2,315	3,056	4,017	3,266	3,915	69.1%	19.9%
540 Heartland	821	774	865	1,131	1,433	74.5%	26.7%
519 Highland	799	973	987	891	784	-1.9%	-12.0%
514 Illinois Central	1,786	1,665	1,854	2,012	2,269	27.0%	12.8%
529 Illinois Eastern	(1,360)	(1,334)	(1,466)	(1,352)	(1,251)	(-8.0%)	(-7.5%)
04 Frontier	697	621	714	654	590	-15.4%	-9.8%
01 Lincoln Trail	184	203	212	214	198	7.6%	-7.5%
02 Olney Central	249	235	242	209	215	-13.7%	2.9%
03 Wabash Valley	230	275	298	275	248	7.8%	-9.8%
513 Illinois Valley	563	517	975	948	852	51.3%	-10.1%
530 John A. Logan	1,011	943	1,072	1,046	1,020	0.9%	-2.5%
539 John Wood	297	303	307	277	283	-4.7%	2.2%
525 Joliet Junior	4,072	3,029	3,855	4,169	4,560	12.0%	9.4%
520 Kankakee	465	606	638	701	624	34.2%	-11.0%
501 Kaskaskia	2,955	2,889	2,817	2,322	2,149	-27.3%	-7.5%
523 Kishwaukee	494	533	556	600	593	20.0%	-1.2%
517 Lake Land	1,544	1,508	1,631	1,537	1,547	0.2%	0.7%
536 Lewis and Clark	3,915	3,919	4,046	3,938	3,813	-2.6%	-3.2%
526 Lincoln Land	1,852	1,784	1,954	1,933	1,573	-15.1%	-18.6%
528 McHenry County	916	1,337	1,527	1,730	2,090	128.2%	20.8%
524 Moraine Valley	1,436	1,957	2,475	2,447	3,386	135.8%	38.4%
527 Morton	135	146	577	310	898	565.2%	189.7%
535 Oakton	633	750	800	1,212	1,828	188.8%	50.8%
505 Parkland	1,042	1,146	1,068	1,177	1,163	11.6%	-1.2%
515 Prairie State	718	864	552	767	678	-5.6%	-11.6%
521 Rend Lake	1,041	1,049	1,047	922	1,003	-3.7%	8.8%
537 Richland	851	940	885	815	933	9.6%	14.5%
511 Rock Valley	649	650	681	643	584	-10.0%	-9.2%
506 Sauk Valley	847	690	758	700	686	-19.0%	-2.0%
531 Shawnee	493	510	558	450	420	-14.8%	-6.7%
510 South Suburban	773	873	817	1,537	1,806	133.6%	17.5%
533 Southeastern Illinois	587	675	580	858	801	36.5%	-6.6%
522 Southwestern Illinois	2,848	2,774	2,556	2,942	2,878	1.1%	-2.2%
534 Spoon River	289	295	253	293	326	12.8%	11.3%
504 Triton	580	735	736	826	1,244	114.5%	50.6%
516 Waubensee	1,461	2,180	2,234	2,271	2,247	53.8%	-1.1%
TOTALS/AVERAGES	51,718	54,871	57,897	59,039	64,106	24.0%	8.6%

SOURCE OF DATA: ICCB Centralized Data System--Annual Enrollment and Completion (A1) Data



Illinois Community College Board  
Table A-2  
DUAL CREDIT HEADCOUNT ENROLLMENT VS.  
OVERALL CREDIT ENROLLMENT BY COLLEGE  
FISCAL YEAR 2019

Dist.	No. District/College	Dual Credit	Total Credit	% Dual Credit
	503 Black Hawk	1,277	7,598	16.8%
	518 Carl Sandburg	568	3,036	18.7%
	508 City Colleges of Chicago	(4,188)	(71,314)	(5.9%)
	02 Harold Washington	615	12,389	5.0%
	04 Harry S Truman	263	12,049	2.2%
	01 Kennedy-King	438	4,868	9.0%
	03 Malcolm X	506	10,916	4.6%
	05 Olive-Harvey	388	4,607	8.4%
	06 Richard J. Daley	951	11,258	8.4%
	07 Wilbur Wright	1,027	15,227	6.7%
	502 College of DuPage	5,771	41,901	13.8%
	532 College of Lake County	1,343	22,809	5.9%
	507 Danville Area	973	5,931	16.4%
	509 Elgin	349	14,547	2.4%
	512 Harper	3,915	23,364	16.8%
	540 Heartland	1,433	8,608	16.6%
	519 Highland	784	2,944	26.6%
	514 Illinois Central	2,269	12,505	18.1%
	529 Illinois Eastern	(1,251)	(26,229)	(4.8%)
	04 Frontier	590	8,016	7.4%
	01 Lincoln Trail	198	1,314	15.1%
	02 Olney Central	215	1,786	12.0%
	03 Wabash Valley	248	15,113	1.6%
	513 Illinois Valley	852	4,549	18.7%
	530 John A. Logan	1,020	11,890	8.6%
	539 John Wood	283	2,935	9.6%
	525 Joliet Junior	4,560	23,030	19.8%
	520 Kankakee	624	4,913	12.7%
	501 Kaskaskia	2,149	5,492	39.1%
	523 Kishwaukee	593	4,736	12.5%
	517 Lake Land	1,547	17,396	8.9%
	536 Lewis and Clark	3,813	8,868	43.0%
	526 Lincoln Land	1,573	10,222	15.4%
	528 McHenry County	2,090	10,941	19.1%
	524 Moraine Valley	3,386	22,597	15.0%
	527 Morton	898	6,951	12.9%
	535 Oakton	1,828	17,553	10.4%
	505 Parkland	1,163	11,367	10.2%
	515 Prairie State	678	8,087	8.4%
	521 Rend Lake	1,003	4,370	23.0%
	537 Richland	933	4,176	22.3%
	511 Rock Valley	584	9,920	5.9%
	506 Sauk Valley	686	2,785	24.6%
	531 Shawnee	420	3,344	12.6%
	510 South Suburban	1,806	8,839	20.4%
	533 Southeastern Illinois	801	3,778	21.2%
	522 Southwestern Illinois	2,878	15,299	18.8%
	534 Spoon River	326	2,158	15.1%
	504 Triton	1,244	17,385	7.2%
	516 Waubensee	2,247	16,110	13.9%
	TOTALS	64,106	500,477	12.8%

SOURCE OF DATA: ICCB Centralized Data System--Annual Enrollment and Completion (A1) Data



Illinois Community College Board

Table A-3

DUAL CREDIT HEADCOUNT ENROLLMENT BY GENDER AND BY COLLEGE  
FISCAL YEAR 2019

Dist.			
<u>No.</u>	<u>District/College</u>	<u>Male</u>	<u>Female</u>
			<u>Total</u>
503	Black Hawk	549	728
518	Carl Sandburg	211	357
508	City Colleges of Chicago	(1,881)	(2,307)
02	Harold Washington	240	375
04	Harry S Truman	130	133
01	Kennedy-King	239	199
03	Malcolm X	216	290
05	Olive-Harvey	152	236
06	Richard J. Daley	413	538
07	Wilbur Wright	491	536
502	College of DuPage	2,707	3,064
532	College of Lake County	662	681
507	Danville Area	448	525
509	Elgin	202	147
512	Harper	1,844	2,071
540	Heartland	667	766
519	Highland	364	420
514	Illinois Central	979	1,290
529	Illinois Eastern	(568)	(683)
04	Frontier	219	371
01	Lincoln Trail	93	105
02	Olney Central	114	101
03	Wabash Valley	142	106
513	Illinois Valley	362	490
530	John A. Logan	348	672
539	John Wood	121	162
525	Joliet Junior	2,116	2,444
520	Kankakee	303	321
501	Kaskaskia	991	1,158
523	Kishwaukee	313	280
517	Lake Land	754	793
536	Lewis and Clark	1,925	1,888
526	Lincoln Land	733	840
528	McHenry County	1,139	951
524	Moraine Valley	2,151	1,235
527	Morton	487	411
535	Oakton	1,001	827
505	Parkland	515	648
515	Prairie State	427	251
521	Rend Lake	501	502
537	Richland	408	525
511	Rock Valley	249	335
506	Sauk Valley	313	373
531	Shawnee	164	256
510	South Suburban	850	956
533	Southeastern Illinois	384	417
522	Southwestern Illinois	1,509	1,369
534	Spoon River	115	211
504	Triton	564	680
516	Waubonsee	<u>1,097</u>	<u>1,150</u>
	TOTALS	30,922	33,184
			64,106

SOURCE OF DATA: ICCB Centralized Data System--Annual Enrollment and Completion (A1) Data



Illinois Community College Board  
Table A-4  
DUAL CREDIT HEADCOUNT ENROLLMENT BY ETHNIC ORIGIN AND BY COLLEGE  
FISCAL YEAR 2019

Dist. No. District/College	Asian	Native American	African American Non-Latino	Latino	White Non-Latino	Non- Resident Alien	Pacific Islander	Two or More Races	All Other or No Indication	Total
503 Black Hawk	26	1	50	150	994	0	0	42	14	1,277
518 Carl Sandburg	4	1	5	31	476	0	0	26	25	568
508 City Colleges of Chicago	(149)	(6)	(1,384)	(2,006)	(334)	(27)	(4)	(117)	(161)	(4,188)
02 Harold Washington	11	3	411	87	15	6	0	33	49	615
04 Harry S Truman	39	1	46	134	27	4	1	8	3	263
01 Kennedy-King	0	0	298	93	7	0	0	11	29	438
03 Malcolm X	3	1	163	264	6	2	0	5	62	506
05 Olive-Harvey	0	1	232	128	8	1	0	10	8	388
06 Richard J. Daley	18	0	172	662	66	4	0	20	9	951
07 Wilbur Wright	78	0	62	638	205	10	3	30	1	1,027
502 College of DuPage	700	14	345	1,212	3,074	0	0	67	359	5,771
532 College of Lake County	46	1	83	506	587	6	3	71	40	1,343
507 Danville Area	7	3	87	53	731	0	0	13	79	973
509 Elgin	11	3	8	150	158	0	0	15	4	349
512 Harper	699	8	135	1,076	1,637	0	0	132	228	3,915
540 Heartland	21	3	46	76	1,201	3	0	72	11	1,433
519 Highland	4	4	38	37	655	0	0	29	17	784
514 Illinois Central	66	1	140	88	1,837	10	0	127	0	2,269
529 Illinois Eastern	(4)	(4)	(3)	(24)	(1,178)	(0)	(1)	(37)	(0)	(1,251)
04 Frontier	1	1	0	7	567	0	1	13	0	590
01 Lincoln Trail	0	0	1	5	183	0	0	9	0	198
02 Olney Central	2	1	0	9	193	0	0	10	0	215
03 Wabash Valley	1	2	2	3	235	0	0	5	0	248
513 Illinois Valley	5	1	5	107	678	0	0	14	42	852
530 John A. Logan	7	0	27	15	823	0	0	0	148	1,020
539 John Wood	8	0	3	0	266	0	0	1	5	283
525 Joliet Junior	140	6	381	1,030	2,755	3	2	199	44	4,560
520 Kankakee	4	0	77	120	384	0	0	29	10	624
501 Kaskaskia	21	9	33	46	1,921	0	4	91	24	2,149
523 Kishwaukee	6	4	21	134	388	0	0	33	7	593
517 Lake Land	8	2	10	41	1,375	0	0	45	66	1,547
536 Lewis and Clark	43	21	288	62	2,896	0	5	7	491	3,813
526 Lincoln Land	31	12	52	91	1,106	0	0	129	152	1,573
528 McHenry County	41	2	30	396	1,366	3	3	133	116	2,090
524 Moraine Valley	144	16	529	918	1,509	0	0	153	117	3,386
527 Morton	6	6	18	738	31	0	0	7	92	898
535 Oakton	374	5	57	254	987	6	4	92	49	1,828
505 Parkland	38	2	42	76	734	4	1	49	217	1,163
515 Prairie State	5	4	464	83	86	8	1	6	21	678
521 Rend Lake	9	7	26	9	931	0	1	9	11	1,003
537 Richland	7	1	94	15	764	1	0	8	43	933
511 Rock Valley	19	1	24	101	404	0	1	21	13	584
506 Sauk Valley	4	1	6	78	559	0	0	22	16	686
531 Shawnee	2	5	25	22	355	0	1	0	10	420
510 South Suburban	41	22	820	412	416	0	7	43	45	1,806
533 Southeastern Illinois	9	0	8	12	729	0	0	35	8	801
522 Southwestern Illinois	32	11	501	166	1,845	23	0	194	106	2,878
534 Spoon River	0	2	2	7	313	0	0	1	1	326
504 Triton	62	0	95	548	442	12	2	52	31	1,244
516 Waubonsee	117	11	109	561	1,362	4	1	37	45	2,247
TOTALS	2,920	200	6,071	11,451	38,287	110	41	2,158	2,868	64,106

SOURCE OF DATA: ICCB Centralized Data System--Annual Enrollment and Completion (A1) Data



Illinois Community College Board  
Table A-5  
DUAL CREDIT HEADCOUNT ENROLLMENT  
BY NUMBER OF ENROLLED HOURS AND BY COLLEGE  
FISCAL YEAR 2019

Dist.	No.	District/College	>0-3.99	4-6.99	7-9.99	10-12.99	13 or More	Total
	503	Black Hawk	324	418	228	139	168	1,277
	518	Carl Sandburg	119	145	84	110	110	568
	508	City Colleges of Chicago	(1,085)	(2,099)	(423)	(372)	(209)	(4,188)
	02	Harold Washington	142	310	32	71	60	615
	04	Harry S Truman	118	76	40	19	10	263
	01	Kennedy-King	219	163	12	25	19	438
	03	Malcolm X	159	237	75	16	19	506
	05	Olive-Harvey	53	166	59	63	47	388
	06	Richard J. Daley	179	498	130	105	39	951
	07	Wilbur Wright	215	649	75	73	15	1,027
	502	College of DuPage	3,838	1,403	337	84	109	5,771
	532	College of Lake County	608	382	226	99	28	1,343
	507	Danville Area	110	369	161	132	201	973
	509	Elgin	155	56	60	43	35	349
	512	Harper	1,685	1,504	486	157	83	3,915
	540	Heartland	419	403	307	163	141	1,433
	519	Highland	374	199	127	71	13	784
	514	Illinois Central	632	786	407	231	213	2,269
	529	Illinois Eastern	(202)	(224)	(205)	(176)	(444)	(1,251)
	04	Frontier	106	96	111	64	213	590
	01	Lincoln Trail	7	35	28	37	91	198
	02	Olney Central	24	39	38	44	70	215
	03	Wabash Valley	65	54	28	31	70	248
	513	Illinois Valley	295	293	118	71	75	852
	530	John A. Logan	386	248	147	122	117	1,020
	539	John Wood	50	139	44	36	14	283
	525	Joliet Junior	2,077	1,802	424	167	90	4,560
	520	Kankakee	314	174	122	11	3	624
	501	Kaskaskia	755	627	347	202	218	2,149
	523	Kishwaukee	146	198	172	39	38	593
	517	Lake Land	353	485	239	204	266	1,547
	536	Lewis and Clark	1,357	920	591	274	671	3,813
	526	Lincoln Land	507	586	225	131	124	1,573
	528	McHenry County	1,295	241	416	98	40	2,090
	524	Moraine Valley	2,183	859	292	44	8	3,386
	527	Morton	511	177	191	16	3	898
	535	Oakton	864	580	313	63	8	1,828
	505	Parkland	175	417	201	150	220	1,163
	515	Prairie State	561	112	5	0	0	678
	521	Rend Lake	229	224	136	93	321	1,003
	537	Richland	329	278	130	124	72	933
	511	Rock Valley	195	64	31	19	275	584
	506	Sauk Valley	202	157	144	123	60	686
	531	Shawnee	93	105	69	63	90	420
	510	South Suburban	1,484	284	30	8	0	1,806
	533	Southeastern Illinois	361	223	76	52	89	801
	522	Southwestern Illinois	1,264	937	186	142	349	2,878
	534	Spoon River	112	98	49	35	32	326
	504	Triton	553	295	321	36	39	1,244
	516	Waubensee	1,017	633	307	152	138	2,247
	TOTALS		27,219	19,144	8,377	4,252	5,114	64,106

SOURCE OF DATA: ICCB Centralized Data System--Annual Enrollment and Completion (A1) Data



Illinois Community College Board  
Table B-1  
DUAL CREDIT COURSE COUNT BY COLLEGE  
FOR FISCAL YEARS 2015-2019

Dist.		FY 2017-2019					FY 2018-2019		FY 2015-2019		
No.	District/College	2015	2016	2017	2018	2019	Number	Number	Percent	Number	Percent
503	Black Hawk	333	311	311	359	401	357	42	11.7%	68	20.4%
518	Carl Sandburg	201	178	201	256	315	257	59	23.0%	114	56.7%
508	City Colleges of Chicago	(426)	(599)	(482)	(575)	(606)	(554)	(31)	(5.4%)	(180)	(42.3%)
02	Harold Washington	118	119	46	125	124	98	-1	-0.8%	6	5.1%
04	Harry S Truman	60	118	69	52	41	54	-11	-21.2%	-19	-31.7%
01	Kennedy-King	27	46	29	69	63	54	-6	-8.7%	36	133.3%
03	Malcolm X	43	55	53	80	80	71	0	0.0%	37	86.0%
05	Olive-Harvey	27	45	52	67	88	69	21	31.3%	61	225.9%
06	Richard J. Daley	62	138	160	105	122	129	17	16.2%	60	96.8%
07	Wilbur Wright	89	78	73	77	88	79	11	14.3%	-1	-1.1%
502	College of DuPage	481	434	459	431	462	451	31	7.2%	-19	-4.0%
532	College of Lake County	139	151	154	173	164	164	-9	-5.2%	25	18.0%
507	Danville Area	522	576	631	618	489	579	-129	-20.9%	-33	-6.3%
509	Elgin	83	80	69	310	382	254	72	23.2%	299	360.2%
512	Harper	189	296	369	342	372	361	30	8.8%	183	96.8%
540	Heartland	184	184	175	238	307	240	69	29.0%	123	66.8%
519	Highland	131	160	163	130	117	137	-13	-10.0%	-14	-10.7%
514	Illinois Central	231	224	253	268	271	264	3	1.1%	40	17.3%
529	Illinois Eastern	(406)	(354)	(500)	(445)	(521)	(489)	(76)	(17.1%)	(115)	(28.3%)
04	Frontier	206	159	250	215	212	226	-3	-1.4%	6	2.9%
01	Lincoln Trail	45	47	54	67	125	82	58	86.6%	80	177.8%
02	Olney Central	59	57	66	56	76	66	20	35.7%	17	28.8%
03	Wabash Valley	96	91	130	107	108	115	1	0.9%	12	12.5%
513	Illinois Valley	199	190	157	160	148	155	-12	-7.5%	-51	-25.6%
530	John A. Logan	111	121	116	134	124	125	-10	-7.5%	13	11.7%
539	John Wood	94	87	91	79	79	83	0	0.0%	-15	-16.0%
525	Joliet Junior	471	307	368	400	436	401	36	9.0%	-35	-7.4%
520	Kankakee	48	54	72	51	48	57	-3	-5.9%	0	0.0%
501	Kaskaskia	529	517	440	365	357	387	-8	-2.2%	-172	-32.5%
523	Kishwaukee	60	61	80	54	105	80	51	94.4%	45	75.0%
517	Lake Land	316	331	372	388	384	381	-4	-1.0%	68	21.5%
536	Lewis and Clark	578	542	554	529	533	539	4	0.8%	-45	-7.8%
526	Lincoln Land	238	245	248	233	202	228	-31	-13.3%	-36	-15.1%
528	McHenry County	101	103	113	127	152	131	25	19.7%	51	50.5%
524	Moraine Valley	137	143	171	174	258	201	84	48.3%	121	88.3%
527	Morton	17	15	48	26	84	53	58	223.1%	67	394.1%
535	Oakton	53	57	71	84	129	95	45	53.6%	76	143.4%
505	Parkland	336	336	312	284	316	304	32	11.3%	-20	-6.0%
515	Prairie State	80	75	45	57	52	51	-5	-8.8%	-28	-35.0%
521	Rend Lake	191	267	274	268	234	259	-34	-12.7%	43	22.5%
537	Richland	226	289	269	222	262	251	40	18.0%	36	15.9%
511	Rock Valley	727	896	872	777	702	784	-75	-9.7%	-25	-3.4%
506	Sauk Valley	338	328	335	346	340	340	-6	-1.7%	2	0.6%
531	Shawnee	54	59	64	64	67	65	3	4.7%	13	24.1%
510	South Suburban	122	156	159	173	216	183	43	24.9%	94	77.0%
533	Southeastern Illinois	255	263	231	211	233	225	22	10.4%	-22	-8.6%
522	Southwestern Illinois	769	995	963	1,109	1,160	1,077	51	4.6%	391	50.8%
534	Spoon River	87	124	132	139	146	139	7	5.0%	59	67.8%
504	Triton	113	142	169	192	258	206	66	34.4%	145	128.3%
516	Waubonsee	410	490	501	479	473	484	-6	-1.3%	63	15.4%
TOTALS		9,986	10,740	10,994	11,270	11,905	11,390	635	5.6%	1,919	19.2%
Pure											
Minimum		17	15	29	26	41	51	-129	-21.2%	-172	-35.0%
Maximum		769	995	963	1,109	1,160	1,077	84	223.1%	391	394.1%
Median		134	154	162	174	207	192	6	4.6%	31	17.7%
Standard Deviation		187	208	207	208	203	203	38	38.7%	88	89.5%
Average		208	224	229	235	248	237	13	14.8%	40	49.6%

SOURCE OF DATA: ICCB Centralized Data System--Annual Course (AC) Data



Illinois Community College Board  
Table B-2  
DUAL CREDIT COURSE ENROLLMENT BY COLLEGE  
FOR FISCAL YEARS 2015-2019

Dist. No.	District/College	FY 2017-2019 3-Year Average					FY 2018-2019 1-Year Difference		FY 2015-2019 5-Year Difference		
		2015	2016	2017	2018	2019	Number	Percent	Number	Percent	
503	Black Hawk	3,689	3,243	3,228	3,094	3,382	3,235	288	9.3%	-307	-8.3%
518	Carl Sandburg	1,408	1,428	1,553	1,939	1,878	1,790	-61	-3.1%	470	33.4%
508	City Colleges of Chicago	(2,623)	(4,603)	(3,199)	(6,562)	(7,135)	(5,632)	(573)	(8.7%)	(4,512)	(172.0%)
02	Harold Washington	468	792	92	1,519	1,326	979	-193	-12.7%	858	183.3%
04	Harry S Truman	521	655	283	375	370	343	-5	-1.3%	-151	-29.0%
01	Kennedy-King	144	334	221	487	736	481	249	51.1%	592	411.1%
03	Malcolm X	176	396	389	656	718	588	62	9.5%	542	308.0%
05	Olive-Harvey	281	415	549	913	894	785	-19	-2.1%	613	218.1%
06	Richard J. Daley	513	1,094	1,057	1,305	1,725	1,362	420	32.2%	1,212	236.3%
07	Wilbur Wright	520	917	608	1,307	1,366	1,094	59	4.5%	846	162.7%
502	College of DuPage	7,628	8,039	8,269	7,551	8,031	7,950	480	6.4%	403	5.3%
532	College of Lake County	1,937	1,775	1,968	2,026	1,907	1,967	-119	-5.9%	-30	-1.5%
507	Danville Area	1,896	2,306	2,512	2,526	2,735	2,591	209	8.3%	839	44.3%
509	Elgin	374	365	262	1,585	1,830	1,226	245	15.5%	1,456	389.3%
512	Harper	3,098	4,097	5,490	4,580	5,432	5,167	852	18.6%	2,334	75.3%
540	Heartland	1,697	1,523	1,614	2,242	3,013	2,290	771	34.4%	1,316	77.5%
519	Highland	1,306	1,740	1,731	1,539	1,353	1,541	-186	-12.1%	47	3.6%
514	Illinois Central	3,924	3,786	4,626	6,346	5,300	5,424	-1,046	-16.5%	1,376	35.1%
529	Illinois Eastern	(4,314)	(4,255)	(4,876)	(4,584)	(4,307)	(4,589)	(-277)	(-6.0%)	(-7)	(-0.2%)
04	Frontier	2,455	2,138	2,595	2,504	2,054	2,384	-450	-18.0%	-401	-16.3%
01	Lincoln Trail	417	538	528	628	755	637	127	20.2%	338	81.1%
02	Olney Central	823	783	766	683	715	721	32	4.7%	-108	-13.1%
03	Wabash Valley	619	796	987	769	783	846	14	1.8%	164	26.5%
513	Illinois Valley	1,452	1,327	1,705	1,851	1,746	1,767	-105	-5.7%	294	20.2%
530	John A. Logan	1,419	1,953	1,996	2,118	2,088	2,067	-30	-1.4%	669	47.1%
539	John Wood	592	574	597	590	589	592	-1	-0.2%	-3	-0.5%
525	Joliet Junior	6,997	4,730	6,183	6,803	7,233	6,740	430	6.3%	236	3.4%
520	Kankakee	644	909	916	941	805	887	-136	-14.5%	161	25.0%
501	Kaskaskia	7,129	7,151	6,717	5,087	4,895	5,566	-192	-3.8%	-2,234	-31.3%
523	Kishwaukee	719	795	849	585	1,197	877	612	104.6%	478	66.5%
517	Lake Land	3,599	3,584	3,958	3,808	3,826	3,864	18	0.5%	227	6.3%
536	Lewis and Clark	9,006	8,894	9,103	8,909	8,842	8,951	-67	-0.8%	-164	-1.8%
526	Lincoln Land	3,224	3,015	3,500	3,368	3,017	3,295	-351	-10.4%	-207	-6.4%
528	McHenry County	1,520	2,026	2,300	2,373	2,808	2,494	435	18.3%	1,288	84.7%
524	Moraine Valley	2,207	2,632	3,356	3,192	4,610	3,719	1,418	44.4%	2,403	108.9%
527	Morton	201	227	623	337	1,150	703	813	241.2%	949	472.1%
535	Oakton	796	903	1,025	1,518	2,314	1,619	796	52.4%	1,518	190.7%
505	Parkland	2,150	2,376	2,345	2,277	2,576	2,399	299	13.1%	426	19.8%
515	Prairie State	1,036	1,165	647	897	763	769	-134	-14.9%	-273	-26.4%
521	Rend Lake	2,845	3,040	3,377	2,798	3,219	3,131	421	15.0%	374	13.1%
537	Richland	1,647	2,102	1,876	1,741	2,005	1,874	264	15.2%	358	21.7%
511	Rock Valley	3,038	3,496	3,380	3,367	3,111	3,286	-256	-7.6%	73	2.4%
506	Sauk Valley	2,140	1,649	1,887	1,787	1,642	1,772	-145	-8.1%	-498	-23.3%
531	Shawnee	870	913	870	966	988	941	22	2.3%	118	13.6%
510	South Suburban	960	1,157	1,188	2,167	2,506	1,954	339	15.6%	1,546	161.0%
533	Southeastern Illinois	1,575	1,789	1,502	1,497	1,444	1,481	-53	-3.5%	-131	-8.3%
522	Southwestern Illinois	5,589	5,852	6,221	7,793	7,709	7,241	-84	-1.1%	2,120	37.9%
534	Spoon River	351	692	626	724	737	696	13	1.8%	386	110.0%
504	Triton	867	1,169	1,254	1,380	2,127	1,587	747	54.1%	1,260	145.3%
516	Waubonsee	2,876	4,081	4,314	4,224	4,364	4,301	140	3.3%	1,488	51.7%
TOTALS		99,343	105,361	111,643	117,672	124,614	117,976	6,942	5.9%	25,271	25.4%
Pure											
	Minimum	144	227	92	337	370	343	-1,046	-18.0%	-2,234	-31.3%
	Maximum	9,006	8,894	9,103	8,909	8,842	8,951	1,418	241.2%	2,403	472.1%
	Median	1,436	1,586	1,660	1,819	1,956	1,781	27	2.8%	395	29.9%
	Standard Deviation	2,094	2,001	2,164	2,083	2,084	2,086	407	40.4%	820	119.1%
	Average	2,070	2,195	2,326	2,452	2,596	2,458	145	13.8%	526	77.6%

SOURCE OF DATA: ICCB Centralized Data System--Annual Course (AC) Data





Illinois Community College Board  
Table B-3  
AVERAGE DUAL CREDIT CLASS SIZE BY COLLEGE  
FOR FISCAL YEARS 2015-2019

Dist. No. District/College	2015	2016	2017	2018	2019	FY 2017-2019 3-Year Average	FY 2018-2019 1-Year Difference		FY 2015-2019 5-Year Difference	
						Number	Number	Percent	Number	Percent
503 Black Hawk	11.1	10.4	10.4	8.6	8.4	9.1	-0.2	-2.1%	-2.6	-23.9%
518 Carl Sandburg	7.0	8.0	7.7	7.6	6.0	7.1	-1.6	-21.3%	-1.0	-14.9%
508 City Colleges of Chicago	(6.2)	(7.7)	(6.6)	(11.4)	(11.8)	(9.9)	(0.4)	(3.2%)	(5.6)	(91.2%)
02 Harold Washington	4.0	6.7	2.0	12.2	10.7	8.3	-1.5	-12.0%	6.7	169.6%
04 Harry S Truman	8.7	5.6	4.1	7.2	9.0	6.8	1.8	25.1%	0.3	3.9%
01 Kennedy-King	5.3	7.3	7.6	7.1	11.7	8.8	4.6	65.5%	6.3	119.0%
03 Malcolm X	4.1	7.2	7.3	8.2	9.0	8.2	0.8	9.5%	4.9	119.3%
05 Olive-Harvey	10.4	9.2	10.6	13.6	10.2	11.4	-3.5	-25.4%	-0.2	-2.4%
06 Richard J. Daley	8.3	7.9	6.6	12.4	14.1	11.1	1.7	13.8%	5.9	70.9%
07 Wilbur Wright	5.8	11.8	8.3	17.0	15.5	13.6	-1.5	-8.6%	9.7	165.7%
502 College of DuPage	15.9	18.5	18.0	17.5	17.4	17.6	-0.1	-0.8%	1.5	9.6%
532 College of Lake County	13.9	11.8	12.8	11.7	11.6	12.0	-0.1	-0.7%	-2.3	-16.6%
507 Danville Area	3.6	4.0	4.0	4.1	5.6	4.6	1.5	36.8%	2.0	54.0%
509 Elgin	4.5	4.6	3.8	5.1	4.8	4.6	-0.3	-6.3%	0.3	6.3%
512 Harper	16.4	13.8	14.9	13.4	14.6	14.3	1.2	9.0%	-1.8	-10.9%
540 Heartland	9.2	8.3	9.2	9.4	9.8	9.5	0.4	4.2%	0.6	6.4%
519 Highland	10.0	10.9	10.6	11.8	11.6	11.3	-0.3	-2.3%	1.6	16.0%
514 Illinois Central	17.0	16.9	18.3	23.7	19.6	20.5	-4.1	-17.4%	2.6	15.1%
529 Illinois Eastern	(10.6)	(12.0)	(9.8)	(10.3)	(8.3)	(9.4)	(-2.0)	(-19.7%)	(-2.4)	(-22.2%)
04 Frontier	11.9	13.4	10.4	11.6	9.7	10.6	-2.0	-16.8%	-2.2	-18.7%
01 Lincoln Trail	9.3	11.4	9.8	9.4	6.0	8.4	-3.3	-35.6%	-3.2	-34.8%
02 Olney Central	13.9	13.7	11.6	12.2	9.4	11.1	-2.8	-22.9%	-4.5	-32.6%
03 Wabash Valley	6.4	8.7	7.6	7.2	7.3	7.3	0.1	0.9%	0.8	12.4%
513 Illinois Valley	7.3	7.0	10.9	11.6	11.8	11.4	0.2	2.0%	4.5	61.7%
530 John A. Logan	12.8	16.1	17.2	15.8	16.8	16.6	1.0	6.5%	4.1	31.7%
539 John Wood	6.3	6.6	6.6	7.5	7.5	7.2	0.0	-0.2%	1.2	18.4%
525 Joliet Junior	14.9	15.4	16.8	17.0	16.6	16.8	-0.4	-2.5%	1.7	11.7%
520 Kankakee	13.4	16.8	12.7	18.5	16.8	16.0	-1.7	-9.1%	3.4	25.0%
501 Kaskaskia	13.5	13.8	15.3	13.9	13.7	14.3	-0.2	-1.6%	0.2	1.7%
523 Kishwaukee	12.0	13.0	10.6	10.8	11.4	10.9	0.6	5.2%	-0.6	-4.9%
517 Lake Land	11.4	10.8	10.6	9.8	10.0	10.1	0.1	1.5%	-1.4	-12.5%
536 Lewis and Clark	15.6	16.4	16.4	16.8	16.6	16.6	-0.3	-1.5%	1.0	6.5%
526 Lincoln Land	13.5	12.3	14.1	14.5	14.9	14.5	0.5	3.3%	1.4	10.3%
528 McHenry County	15.0	19.7	20.4	18.7	18.5	19.2	-0.2	-1.1%	3.4	22.8%
524 Moraine Valley	16.1	18.4	19.6	18.3	17.9	18.6	-0.5	-2.6%	1.8	10.9%
527 Morton	11.8	15.1	13.0	13.0	13.7	13.2	0.7	5.6%	1.9	15.8%
535 Oakton	15.0	15.8	14.4	18.1	17.9	16.8	-0.1	-0.7%	2.9	19.4%
505 Parkland	6.4	7.1	7.5	8.0	8.2	7.9	0.1	1.7%	1.8	27.4%
515 Prairie State	13.0	15.5	14.4	15.7	14.7	14.9	-1.1	-6.8%	1.7	13.3%
521 Rend Lake	14.9	11.4	12.3	10.4	13.8	12.2	3.3	31.8%	-1.1	-7.6%
537 Richland	7.3	7.3	7.0	7.8	7.7	7.5	-0.2	-2.4%	0.4	5.0%
511 Rock Valley	4.2	3.9	3.9	4.3	4.4	4.2	0.1	2.3%	0.3	6.0%
506 Sauk Valley	6.3	5.0	5.6	5.2	4.8	5.2	-0.3	-6.5%	-1.5	-23.7%
531 Shawnee	16.1	15.5	13.6	15.1	14.7	14.5	-0.3	-2.3%	-1.4	-8.5%
510 South Suburban	7.9	7.4	7.5	12.5	11.6	10.5	-0.9	-7.4%	3.7	47.4%
533 Southeastern Illinois	6.2	6.8	6.5	7.1	6.2	6.6	-0.9	-12.6%	0.0	0.3%
522 Southwestern Illinois	7.3	5.9	6.5	7.0	6.6	6.7	-0.4	-5.4%	-0.6	-8.6%
534 Spoon River	4.0	5.6	4.7	5.2	5.0	5.0	-0.2	-3.1%	1.0	25.1%
504 Triton	7.7	8.2	7.4	7.2	8.2	7.6	1.1	14.7%	0.6	7.5%
516 Waubonsee	<u>7.0</u>	<u>8.3</u>	<u>8.6</u>	<u>8.8</u>	<u>9.2</u>	<u>8.9</u>	<u>0.4</u>	<u>4.6%</u>	<u>2.2</u>	<u>31.5%</u>
TOTALS/AVERAGES	9.9	9.8	10.2	10.4	10.5	10.4	0.0	0.3%	0.5	5.2%
Pure										
Minimum	3.6	3.9	2.0	4.1	4.4	4.2	-4.1	-35.6%	-4.5	-34.8%
Maximum	17.0	19.7	20.4	23.7	19.6	20.5	4.6	65.5%	9.7	169.6%
Median	9.6	10.6	10.4	11.6	11.0	10.8	-0.2	-1.3%	1.0	9.9%
Standard Deviation	4.1	4.4	4.6	4.6	4.3	4.3	1.5	16.1%	2.7	44.2%
Average	10.1	10.7	10.4	11.5	11.3	11.0	-0.2	0.1%	1.2	19.7%

SOURCE OF DATA: ICCB Centralized Data System--Annual Course (AC) Data





Illinois Community College Board  
Table B-4  
TOP TEN DUAL CREDIT COURSE ENROLLMENTS BY CIP (BASED ON FISCAL YEAR 2019)  
FOR FISCAL YEARS 2015-2019

<u>CIP</u>	<u>COURSE NAME</u>	<u>2015</u>	<u>2016</u>	<u>2017</u>	<u>2018</u>	<u>2019</u>	FY 2017-2019 3-Year Average	FY 2018-2019 1-Year Difference		FY 2015-2019 5-Year Difference	
							<u>Number</u>	<u>Number</u>	<u>Percent</u>	<u>Number</u>	<u>Percent</u>
23.1301	Writing, General	15,575 *	16,671	17,278	19,082	19,798	18,719	716	3.8%	4,223	27.1%
27.0101	Mathematics, General	5,478	6,454	6,674	6,545	7,093	6,771	548	8.4%	1,615	29.5%
16.0905	Spanish Language and Literature	4,708	4,975	5,157	5,046	5,538	5,247	492	9.8%	830	17.6%
23.1304	Rhetoric and Composition	3,541 **	3,710	3,967	4,078	4,406	4,150	328	8.0%	865	24.4%
54.0102	American History (United States)	2,952	3,409	3,860	4,386	4,002	4,083	-384	-8.8%	1,050	35.6%
42.0101	Psychology, General	3,851	3,047	3,404	3,676	3,522	3,534	-154	-4.2%	-329	-8.5%
48.0508	Welding Technology/Welder	2,728	2,777	2,959	2,833	2,945	2,912	112	4.0%	217	8.0%
51.3902	Nursing Assistant/Aide and Patient Care Assistant/Aide	2,259	2,301	2,678	2,697	2,730	2,702	33	1.2%	471	20.8%
26.0101	Biology/Biological Sciences, General	1,764	2,549	2,656	2,650	2,709	2,672	59	2.2%	945	53.6%
27.0501	Statistics, General	<u>1,407</u>	<u>1,724</u>	<u>1,967</u>	<u>2,449</u>	<u>2,625</u>	<u>2,347</u>	<u>176</u>	<u>7.2%</u>	<u>1,218</u>	<u>86.6%</u>
Totals		44,263	47,617	50,600	53,442	55,368	53,137	1,926	3.6%	11,105	25.1%
Grand Total		99,343	105,361	111,643	117,672	124,614	117,976	6,942	5.9%	25,271	25.4%
Percent Top Ten of Grand Total		44.6%	45.2%	45.3%	45.4%	44.4%	45.1%	-1.0%	-2.2%	-0.1%	-0.3%

\*includes 23.0401 English Composition and 23.1301 Writing General

\*\*includes 23.1001 Speech and Rhetorical Studies and 23.1304 Rhetoric and Composition

SOURCE OF DATA: ICCB Centralized Data System--Annual Course (AC) Data



Illinois Community College Board  
Table B-5  
DUAL CREDIT COURSE COUNT BY COLLEGE  
IN TRANSFER EDUCATION  
FOR FISCAL YEARS 2015-2019

Dist.	No.	District/College	FY 2017-2019					FY 2018-2019		FY 2015-2019		
			2015	2016	2017	2018	2019	3-Year Average	Number	Percent	Number	Percent
	503	Black Hawk	215	189	188	239	281	236	42	17.6%	66	30.7%
	518	Carl Sandburg	161	133	153	205	267	208	62	30.2%	106	65.8%
	508	City Colleges of Chicago	(370)	(518)	(413)	(463)	(498)	(458)	(35)	(7.6%)	(128)	(34.6%)
	02	Harold Washington	104	105	43	94	95	77	1	1.1%	-9	-8.7%
	04	Harry S Truman	49	103	61	42	34	46	-8	-19.0%	-15	-30.6%
	01	Kennedy-King	26	39	27	54	52	44	-2	-3.7%	26	100.0%
	03	Malcolm X	34	45	49	65	71	62	6	9.2%	37	108.8%
	05	Olive-Harvey	27	41	46	54	72	57	18	33.3%	45	166.7%
	06	Richard J. Daley	56	123	127	88	94	103	6	6.8%	38	67.9%
	07	Wilbur Wright	74	62	60	66	80	69	14	21.2%	6	8.1%
	502	College of DuPage	142	131	141	115	104	120	-11	-9.6%	-38	-26.8%
	532	College of Lake County	45	52	64	59	58	60	-1	-1.7%	13	28.9%
	507	Danville Area	214	279	312	312	347	324	35	11.2%	133	62.1%
	509	Elgin	14	15	13	244	317	191	73	29.9%	303	2164.3%
	512	Harper	60	131	161	127	143	144	16	12.6%	83	138.3%
	540	Heartland	142	127	122	175	208	168	33	18.9%	66	46.5%
	519	Highland	34	56	58	46	32	45	-14	-30.4%	-2	-5.9%
	514	Illinois Central	181	172	176	169	180	175	11	6.5%	-1	-0.6%
	529	Illinois Eastern	(277)	(228)	(299)	(247)	(311)	(286)	(64)	(25.9%)	(34)	(12.3%)
	04	Frontier	148	110	151	119	124	131	5	4.2%	-24	-16.2%
	01	Lincoln Trail	33	32	37	50	97	61	47	94.0%	64	193.9%
	02	Olney Central	43	41	47	32	44	41	12	37.5%	1	2.3%
	03	Wabash Valley	53	45	64	46	46	52	0	0.0%	-7	-13.2%
	513	Illinois Valley	156	155	84	98	92	91	-6	-6.1%	-64	-41.0%
	530	John A. Logan	68	78	78	76	80	78	4	5.3%	12	17.6%
	539	John Wood	80	73	71	65	60	65	-5	-7.7%	-20	-25.0%
	525	Joliet Junior	298	216	210	219	226	218	7	3.2%	-72	-24.2%
	520	Kankakee	30	38	48	27	28	34	1	3.7%	-2	-6.7%
	501	Kaskaskia	261	259	229	156	161	182	5	3.2%	-100	-38.3%
	523	Kishwaukee	13	17	21	6	34	20	28	466.7%	21	161.5%
	517	Lake Land	153	162	171	161	180	171	19	11.8%	27	17.6%
	536	Lewis and Clark	296	278	303	300	303	302	3	1.0%	7	2.4%
	526	Lincoln Land	135	137	148	144	146	146	2	1.4%	11	8.1%
	528	McHenry County	55	67	58	70	69	66	-1	-1.4%	14	25.5%
	524	Moraine Valley	18	17	21	14	24	20	10	71.4%	6	33.3%
	527	Morton	0	6	19	18	60	32	42	233.3%	60	--
	535	Oakton	23	23	27	38	53	39	15	39.5%	30	130.4%
	505	Parkland	244	235	223	219	251	231	32	14.6%	7	2.9%
	515	Prairie State	3	4	0	0	0	0	0	--	-3	-100.0%
	521	Rend Lake	144	180	188	163	150	167	-13	-8.0%	6	4.2%
	537	Richland	149	176	172	133	167	157	34	25.6%	18	12.1%
	511	Rock Valley	667	805	807	713	661	727	-52	-7.3%	-6	-0.9%
	506	Sauk Valley	253	232	239	234	212	228	-22	-9.4%	-41	-16.2%
	531	Shawnee	37	41	44	38	46	43	8	21.1%	9	24.3%
	510	South Suburban	19	58	71	25	5	34	-20	-80.0%	-14	-73.7%
	533	Southeastern Illinois	141	149	143	119	154	139	35	29.4%	13	9.2%
	522	Southwestern Illinois	551	771	751	879	919	850	40	4.6%	368	66.8%
	534	Spoon River	79	96	102	117	130	116	13	11.1%	51	64.6%
	504	Triton	77	89	82	100	117	100	17	17.0%	40	51.9%
	516	Waubonsee	<u>307</u>	<u>382</u>	<u>394</u>	<u>387</u>	<u>359</u>	<u>380</u>	<u>-28</u>	<u>-7.2%</u>	<u>52</u>	<u>16.9%</u>
	TOTALS		6,112	6,775	6,804	6,920	7,433	7,052	513	7.4%	1,321	21.6%
	Pure											
		Mininum	0	4	0	0	0	0	-52	-80.0%	-100	-100.0%
		Maximum	667	805	807	879	919	850	73	466.7%	368	2164.3%
		Median	78	104	83	99	101	101	7	6.5%	12	12.1%
		Standard Deviation	132	159	158	162	163	160	23	77.0%	78	317.6%
		Average	127	141	142	144	155	147	11	23.5%	28	72.5%

SOURCE OF DATA: ICCB Centralized Data System--Annual Course (AC) Data



Illinois Community College Board  
Table B-6  
DUAL CREDIT COURSE ENROLLMENT BY COLLEGE  
IN TRANSFER EDUCATION  
FOR FISCAL YEARS 2015-2019

Dist.		FY 2017-2019					FY 2018-2019		FY 2015-2019		
No.	District/College	2015	2016	2017	2018	2019	3-Year Average	1-Year Difference	5-Year Difference		
							Number	Number	Percent	Number	Percent
503	Black Hawk	2,537	2,151	2,164	2,268	2,466	2,299	198	8.7%	-71	-2.8%
518	Carl Sandburg	1,116	1,016	1,161	1,488	1,578	1,409	90	6.0%	462	41.4%
508	City Colleges of Chicago	(2,308)	(3,813)	(2,766)	(5,367)	(5,822)	(4,652)	(455)	(8.5%)	(3,514)	(152.3%)
02	Harold Washington	407	541	86	961	832	626	-129	-13.4%	425	104.4%
04	Harry S Truman	445	579	259	318	313	297	-5	-1.6%	-132	-29.7%
01	Kennedy-King	124	290	216	396	541	384	145	36.6%	417	336.3%
03	Malcolm X	167	364	370	581	625	525	44	7.6%	458	274.3%
05	Olive-Harvey	281	382	503	752	812	689	60	8.0%	531	189.0%
06	Richard J. Daley	486	959	870	1,162	1,411	1,148	249	21.4%	925	190.3%
07	Wilbur Wright	398	698	462	1,197	1,288	982	91	7.6%	890	223.6%
502	College of DuPage	2,735	2,526	2,751	2,107	2,118	2,325	11	0.5%	-617	-22.6%
532	College of Lake County	933	915	1,177	973	913	1,021	-60	-6.2%	-20	-2.1%
507	Danville Area	859	1,262	1,379	1,437	1,542	1,453	105	7.3%	683	79.5%
509	Elgin	85	83	66	1,311	1,568	982	257	19.6%	1,483	1744.7%
512	Harper	1,220	2,124	2,999	2,342	2,599	2,647	257	11.0%	1,379	113.0%
540	Heartland	1,351	1,207	1,223	1,691	2,259	1,724	568	33.6%	908	67.2%
519	Highland	330	629	652	562	415	543	-147	-26.2%	85	25.8%
514	Illinois Central	3,052	2,997	3,413	4,507	4,072	3,997	-435	-9.7%	1,020	33.4%
529	Illinois Eastern	(3,448)	(3,166)	(3,472)	(3,133)	(2,947)	(3,184)	(-186)	(-5.9%)	(-501)	(-14.5%)
04	Frontier	2,028	1,695	1,879	1,766	1,453	1,699	-313	-17.7%	-575	-28.4%
01	Lincoln Trail	345	427	439	530	628	532	98	18.5%	283	82.0%
02	Olney Central	732	637	620	476	500	532	24	5.0%	-232	-31.7%
03	Wabash Valley	343	407	534	361	366	420	5	1.4%	23	6.7%
513	Illinois Valley	1,336	1,232	1,211	1,430	1,347	1,329	-83	-5.8%	11	0.8%
530	John A. Logan	1,047	1,465	1,482	1,434	1,508	1,475	74	5.2%	461	44.0%
539	John Wood	555	536	500	502	507	503	5	1.0%	-48	-8.6%
525	Joliet Junior	5,580	3,984	4,141	4,370	4,392	4,301	22	0.5%	-1,188	-21.3%
520	Kankakee	377	678	603	528	450	527	-78	-14.8%	73	19.4%
501	Kaskaskia	3,979	4,005	3,819	2,424	2,400	2,881	-24	-1.0%	-1,579	-39.7%
523	Kishwaukee	175	265	261	95	398	251	303	318.9%	223	127.4%
517	Lake Land	2,332	2,332	2,448	2,353	2,535	2,445	182	7.7%	203	8.7%
536	Lewis and Clark	5,424	5,239	5,648	5,830	5,641	5,706	-189	-3.2%	217	4.0%
526	Lincoln Land	2,279	2,232	2,559	2,480	2,457	2,499	-23	-0.9%	178	7.8%
528	McHenry County	1,070	1,689	1,494	1,554	1,693	1,580	139	8.9%	623	58.2%
524	Moraine Valley	308	335	380	241	498	373	257	106.6%	190	61.7%
527	Morton	0	91	308	225	824	452	599	266.2%	824	--
535	Oakton	396	403	494	821	887	734	66	8.0%	491	124.0%
505	Parkland	1,570	1,685	1,636	1,771	2,104	1,837	333	18.8%	534	34.0%
515	Prairie State	34	97	0	0	0	0	0	--	-34	-100.0%
521	Rend Lake	2,314	2,388	2,831	2,294	2,557	2,561	263	11.5%	243	10.5%
537	Richland	851	1,097	936	986	1,252	1,058	266	27.0%	401	47.1%
511	Rock Valley	2,737	3,139	3,173	3,199	3,059	3,144	-140	-4.4%	322	11.8%
506	Sauk Valley	1,553	881	1,135	1,025	905	1,022	-120	-11.7%	-648	-41.7%
531	Shawnee	666	706	691	668	764	708	96	14.4%	98	14.7%
510	South Suburban	147	511	477	460	55	331	-405	-88.0%	-92	-62.6%
533	Southeastern Illinois	948	991	861	864	1,043	923	179	20.7%	95	10.0%
522	Southwestern Illinois	3,080	3,552	3,955	5,370	5,248	4,858	-122	-2.3%	2,168	70.4%
534	Spoon River	323	565	541	650	675	622	25	3.8%	352	109.0%
504	Triton	672	845	664	775	969	803	194	25.0%	297	44.2%
516	Waubonsee	<u>1,971</u>	<u>3,286</u>	<u>3,595</u>	<u>3,515</u>	<u>3,500</u>	<u>3,537</u>	<u>-15</u>	<u>-0.4%</u>	<u>1,529</u>	<u>77.6%</u>
TOTALS		61,698	66,118	69,066	73,050	75,967	72,694	2,917	4.0%	14,269	23.1%
Pure											
Mininum		0	83	0	0	0	0	-435	-88.0%	-1,579	-100.0%
Maximum		5,580	5,239	5,648	5,830	5,641	5,706	599	318.9%	2,168	1744.7%
Median		855	937	903	1,094	1,270	1,021	52	6.0%	263	33.4%
Standard Deviation		1,303	1,197	1,314	1,336	1,291	1,307	201	62.9%	648	261.6%
Average		1,285	1,377	1,439	1,522	1,583	1,514	61	17.7%	297	85.2%

SOURCE OF DATA: ICCB Centralized Data System--Annual Course (AC) Data



Illinois Community College Board  
Table B-7  
AVERAGE DUAL CREDIT CLASS SIZE BY COLLEGE  
IN TRANSFER EDUCATION  
FOR FISCAL YEARS 2015-2019

Dist.						FY 2017-2019	FY 2018-2019		FY 2015-2019		
						3-Year Average	1-Year Difference		5-Year Difference		
No.	District/College	2015	2016	2017	2018	2019	Number	Number	Percent	Number	Percent
503	Black Hawk	11.8	11.4	11.5	9.5	8.8	9.9	-0.7	-7.5%	-3.0	-25.6%
518	Carl Sandburg	6.9	7.6	7.6	7.3	5.9	6.9	-1.3	-18.6%	-1.0	-14.7%
508	City Colleges of Chicago	(6.2)	(7.4)	(6.7)	(11.6)	(11.7)	(10.0)	(0.1)	(0.9%)	(5.5)	(87.4%)
02	Harold Washington	3.9	5.2	2.0	10.2	8.8	7.0	-1.5	-14.3%	4.8	123.8%
04	Harry S Truman	9.1	5.6	4.2	7.6	9.2	7.0	1.6	21.6%	0.1	1.4%
01	Kennedy-King	4.8	7.4	8.0	7.3	10.4	8.6	3.1	41.9%	5.6	118.1%
03	Malcolm X	4.9	8.1	7.6	8.9	8.8	8.4	-0.1	-1.5%	3.9	79.2%
05	Olive-Harvey	10.4	9.3	10.9	13.9	11.3	12.0	-2.6	-19.0%	0.9	8.4%
06	Richard J. Daley	8.7	7.8	6.9	13.2	15.0	11.7	1.8	13.7%	6.3	73.0%
07	Wilbur Wright	5.4	11.3	7.7	18.1	16.1	14.0	-2.0	-11.2%	10.7	199.3%
502	College of DuPage	19.3	19.3	19.5	18.3	20.4	19.4	2.0	11.2%	1.1	5.7%
532	College of Lake County	20.7	17.6	18.4	16.5	15.7	16.9	-0.8	-4.5%	-5.0	-24.1%
507	Danville Area	4.0	4.5	4.4	4.6	4.4	4.5	-0.2	-3.5%	0.4	10.7%
509	Elgin	6.1	5.5	5.1	5.4	4.9	5.1	-0.4	-7.9%	-1.1	-18.5%
512	Harper	20.3	16.2	18.6	18.4	18.2	18.4	-0.3	-1.4%	-2.2	-10.6%
540	Heartland	9.5	9.5	10.0	9.7	10.9	10.2	1.2	12.4%	1.3	14.2%
519	Highland	9.7	11.2	11.2	12.2	13.0	12.1	0.8	6.1%	3.3	33.6%
514	Illinois Central	16.9	17.4	19.4	26.7	22.6	22.9	-4.0	-15.2%	5.8	34.2%
529	Illinois Eastern	(12.4)	(13.9)	(11.6)	(12.7)	(9.5)	(11.3)	(-3.2)	(-25.3%)	(-3.0)	(-23.9%)
04	Frontier	13.7	15.4	12.4	14.8	11.7	13.0	-3.1	-21.0%	-2.0	-14.5%
01	Lincoln Trail	10.5	13.3	11.9	10.6	6.5	9.6	-4.1	-38.9%	-4.0	-38.1%
02	Olney Central	17.0	15.5	13.2	14.9	11.4	13.1	-3.5	-23.6%	-5.7	-33.2%
03	Wabash Valley	6.5	9.0	8.3	7.8	8.0	8.0	0.1	1.4%	1.5	22.9%
513	Illinois Valley	8.6	7.9	14.4	14.6	14.6	14.5	0.0	0.3%	6.1	71.0%
530	John A. Logan	15.4	18.8	19.0	18.9	18.9	18.9	0.0	-0.1%	3.5	22.4%
539	John Wood	6.9	7.3	7.0	7.7	8.5	7.7	0.7	9.4%	1.5	21.8%
525	Joliet Junior	18.7	18.4	19.7	20.0	19.4	19.7	-0.5	-2.6%	0.7	3.8%
520	Kankakee	12.6	17.8	12.6	19.6	16.1	16.1	-3.5	-17.8%	3.5	27.9%
501	Kaskaskia	15.2	15.5	16.7	15.5	14.9	15.7	-0.6	-4.1%	-0.3	-2.2%
523	Kishwaukee	13.5	15.6	12.4	15.8	11.7	13.3	-4.1	-26.1%	-1.8	-13.0%
517	Lake Land	15.2	14.4	14.3	14.6	14.1	14.3	-0.5	-3.6%	-1.2	-7.6%
536	Lewis and Clark	18.3	18.8	18.6	19.4	18.6	18.9	-0.8	-4.2%	0.3	1.6%
526	Lincoln Land	16.9	16.3	17.3	17.2	16.8	17.1	-0.4	-2.3%	-0.1	-0.3%
528	McHenry County	19.5	25.2	25.8	22.2	24.5	24.2	2.3	10.5%	5.1	26.1%
524	Moraine Valley	17.1	19.7	18.1	17.2	20.8	18.7	3.5	20.5%	3.6	21.3%
527	Morton	--	15.2	16.2	12.5	13.7	14.1	1.2	9.9%	--	--
535	Oakton	17.2	17.5	18.3	21.6	16.7	18.9	-4.9	-22.5%	-0.5	-2.8%
505	Parkland	6.4	7.2	7.3	8.1	8.4	7.9	0.3	3.7%	1.9	30.3%
515	Prairie State	11.3	24.3	--	--	--	--	--	--	--	--
521	Rend Lake	16.1	13.3	15.1	14.1	17.0	15.4	3.0	21.1%	1.0	6.1%
537	Richland	5.7	6.2	5.4	7.4	7.5	6.8	0.1	1.1%	1.8	31.3%
511	Rock Valley	4.1	3.9	3.9	4.5	4.6	4.3	0.1	3.1%	0.5	12.8%
506	Sauk Valley	6.1	3.8	4.7	4.4	4.3	4.5	-0.1	-2.5%	-1.9	-30.5%
531	Shawnee	18.0	17.2	15.7	17.6	16.6	16.6	-1.0	-5.5%	-1.4	-7.7%
510	South Suburban	7.7	8.8	6.7	18.4	11.0	12.0	-7.4	-40.2%	3.3	42.2%
533	Southeastern Illinois	6.7	6.7	6.0	7.3	6.8	6.7	-0.5	-6.7%	0.0	0.7%
522	Southwestern Illinois	5.6	4.6	5.3	6.1	5.7	5.7	-0.4	-6.5%	0.1	2.2%
534	Spoon River	4.1	5.9	5.3	5.6	5.2	5.4	-0.4	-6.5%	1.1	27.0%
504	Triton	8.7	9.5	8.1	7.8	8.3	8.0	0.5	6.9%	-0.4	-5.1%
516	Waubonsee	<u>6.4</u>	<u>8.6</u>	<u>9.1</u>	<u>9.1</u>	<u>9.7</u>	<u>9.3</u>	<u>0.7</u>	<u>7.3%</u>	<u>3.3</u>	<u>51.9%</u>
TOTALS/AVERAGES		10.1	9.8	10.2	10.6	10.2	10.3	-0.3	-3.2%	0.1	1.2%
Pure											
Mininum		3.9	3.8	2.0	4.4	4.3	4.3	-7.4	-40.2%	-5.7	-38.1%
Maximum		20.7	25.2	25.8	26.7	24.5	24.2	3.5	41.9%	10.7	199.3%
Median		9.7	11.2	11.2	13.2	11.4	12.0	-0.4	-2.6%	0.8	7.2%
Standard Deviation		5.3	5.6	5.6	5.5	5.3	5.3	2.2	15.2%	3.2	44.3%
Average		11.1	12.0	11.5	12.8	12.3	12.2	-0.6	-2.9%	1.1	19.0%

SOURCE OF DATA: ICCB Centralized Data System--Annual Course (AC) Data



Illinois Community College Board  
Table B-8  
TOP FIVE DUAL CREDIT COURSE ENROLLMENTS BY COLLEGE  
IN TRANSFER EDUCATION  
FISCAL YEAR 2019

Dist. No. District/College	23.1301 Writing, General	27.0101 Mathematics, General	16.0905 Spanish Language and Literature	23.1304 Rhetoric and Composition	54.0102 American History (United States)	Total
503 Black Hawk	990	91	27	245	140	1,493
518 Carl Sandburg	487	25	4	132	29	677
508 City Colleges of Chicago	(1,733)	(1,190)	(662)	(0)	(207)	(3,792)
02 Harold Washington	292	133	10	0	87	522
04 Harry S Truman	79	100	3	0	21	203
01 Kennedy-King	158	2	40	0	23	223
03 Malcolm X	69	79	262	0	4	414
05 Olive-Harvey	216	113	108	0	49	486
06 Richard J. Daley	613	250	133	0	22	1,018
07 Wilbur Wright	306	513	106	0	1	926
502 College of DuPage	0	108	312	0	0	420
532 College of Lake County	143	0	0	24	0	167
507 Danville Area	423	30	7	93	84	637
509 Elgin	300	154	21	35	37	547
512 Harper	326	76	678	426	0	1,506
540 Heartland	735	6	34	0	108	883
519 Highland	67	35	11	0	27	140
514 Illinois Central	1,451	80	46	193	441	2,211
529 Illinois Eastern	(800)	(314)	(122)	(301)	(200)	(1,737)
04 Frontier	430	188	1	112	104	835
01 Lincoln Trail	119	80	119	62	12	392
02 Olney Central	148	0	2	64	76	290
03 Wabash Valley	103	46	0	63	8	220
513 Illinois Valley	336	110	0	220	39	705
530 John A. Logan	262	77	208	93	0	640
539 John Wood	126	89	84	12	0	311
525 Joliet Junior	2,628	187	0	89	291	3,195
520 Kankakee	138	26	0	0	36	200
501 Kaskaskia	531	339	148	257	152	1,427
523 Kishwaukee	98	68	22	38	5	231
517 Lake Land	948	416	46	230	0	1,640
536 Lewis and Clark	1,075	530	1,214	152	658	3,629
526 Lincoln Land	550	169	367	199	391	1,676
528 McHenry County	369	42	751	111	0	1,273
524 Moraine Valley	109	117	0	0	0	226
527 Morton	0	450	0	0	0	450
535 Oakton	259	191	0	0	0	450
505 Parkland	1,093	32	1	12	130	1,268
515 Prairie State	0	0	0	0	0	0
521 Rend Lake	457	666	137	55	125	1,440
537 Richland	574	28	3	21	8	634
511 Rock Valley	265	264	29	233	321	1,112
506 Sauk Valley	273	78	3	64	12	430
531 Shawnee	222	90	91	0	44	447
510 South Suburban	0	0	10	0	7	17
533 Southeastern Illinois	126	15	31	52	17	241
522 Southwestern Illinois	734	348	94	616	295	2,087
534 Spoon River	178	72	0	158	14	422
504 Triton	231	92	21	0	47	391
516 Waubensee	<u>714</u>	<u>488</u>	<u>354</u>	<u>327</u>	<u>137</u>	<u>2,020</u>
TOTALS	19,751	7,093	5,538	4,388	4,002	40,772
Grand Total	124,614	124,614	124,614	124,614	124,614	124,614
Percent Top Five of Grand Total	15.8%	5.7%	4.4%	3.5%	3.2%	32.7%

SOURCE OF DATA: ICCB Centralized Data System--Annual Course (AC) Data



Illinois Community College Board  
Table B-9  
DUAL CREDIT COURSE COUNT BY COLLEGE  
IN CAREER AND TECHNICAL EDUCATION  
FISCAL YEARS 2015-2019

Dist.	No.	District/College	FY 2017-2019					FY 2018-2019		FY 2015-2019		
			2015	2016	2017	2018	2019	3-Year Average	Number	1-Year Difference	Number	Percent
503		Black Hawk	118	122	123	120	120	121	0	0.0%	2	1.7%
518		Carl Sandburg	40	45	48	51	48	49	-3	-5.9%	8	20.0%
508		City Colleges of Chicago	(56)	(81)	(69)	(112)	(108)	(96)	(-4)	(-3.6%)	(52)	(92.9%)
	02	Harold Washington	14	14	3	31	29	21	-2	-6.5%	15	107.1%
	04	Harry S Truman	11	15	8	10	7	8	-3	-30.0%	-4	-36.4%
	01	Kennedy-King	1	7	2	15	11	9	-4	-26.7%	10	1000.0%
	03	Malcolm X	9	10	4	15	9	9	-6	-40.0%	0	0.0%
	05	Olive-Harvey	0	4	6	13	16	12	3	23.1%	16	--
	06	Richard J. Daley	6	15	33	17	28	26	11	64.7%	22	366.7%
	07	Wilbur Wright	15	16	13	11	8	11	-3	-27.3%	-7	-46.7%
502		College of DuPage	339	303	318	316	358	331	42	13.3%	19	5.6%
532		College of Lake County	94	99	90	114	106	103	-8	-7.0%	12	12.8%
507		Danville Area	308	297	319	306	142	256	-164	-53.6%	-166	-53.9%
509		Elgin	69	65	56	66	65	62	-1	-1.5%	-4	-5.8%
512		Harper	129	165	208	215	229	217	14	6.5%	100	77.5%
540		Heartland	42	57	53	63	99	72	36	57.1%	57	135.7%
519		Highland	97	104	105	84	85	91	1	1.2%	-12	-12.4%
514		Illinois Central	50	52	77	99	91	89	-8	-8.1%	41	82.0%
529		Illinois Eastern	(129)	(126)	(201)	(198)	(210)	(203)	(12)	(6.1%)	(81)	(62.8%)
	04	Frontier	58	49	99	96	88	94	-8	-8.3%	30	51.7%
	01	Lincoln Trail	12	15	17	17	28	21	11	64.7%	16	133.3%
	02	Olney Central	16	16	19	24	32	25	8	33.3%	16	100.0%
	03	Wabash Valley	43	46	66	61	62	63	1	1.6%	19	44.2%
513		Illinois Valley	43	35	73	62	56	64	-6	-9.7%	13	30.2%
530		John A. Logan	43	43	38	58	44	47	-14	-24.1%	1	2.3%
539		John Wood	14	14	20	14	19	18	5	35.7%	5	35.7%
525		Joliet Junior	173	91	158	181	210	183	29	16.0%	37	21.4%
520		Kankakee	18	16	24	24	20	23	-4	-16.7%	2	11.1%
501		Kaskaskia	268	258	211	209	196	205	-13	-6.2%	-72	-26.9%
523		Kishwaukee	47	44	59	48	71	59	23	47.9%	24	51.1%
517		Lake Land	163	169	201	227	204	211	-23	-10.1%	41	25.2%
536		Lewis and Clark	282	264	251	229	230	237	1	0.4%	-52	-18.4%
526		Lincoln Land	103	108	100	89	56	82	-33	-37.1%	-47	-45.6%
528		McHenry County	46	36	55	57	83	65	26	45.6%	37	80.4%
524		Moraine Valley	119	126	150	160	234	181	74	46.3%	115	96.6%
527		Morton	17	9	29	8	24	20	16	200.0%	7	41.2%
535		Oakton	30	34	44	46	76	55	30	65.2%	46	153.3%
505		Parkland	92	101	89	65	65	73	0	0.0%	-27	-29.3%
515		Prairie State	77	71	45	57	52	51	-5	-8.8%	-25	-32.5%
521		Rend Lake	47	87	86	105	84	92	-21	-20.0%	37	78.7%
537		Richland	77	113	97	89	95	94	6	6.7%	18	23.4%
511		Rock Valley	60	91	65	64	41	57	-23	-35.9%	-19	-31.7%
506		Sauk Valley	85	96	96	112	128	112	16	14.3%	43	50.6%
531		Shawnee	17	18	20	26	21	22	-5	-19.2%	4	23.5%
510		South Suburban	103	98	88	148	211	149	63	42.6%	108	104.9%
533		Southeastern Illinois	114	114	88	92	79	86	-13	-14.1%	-35	-30.7%
522		Southwestern Illinois	218	224	212	230	241	228	11	4.8%	23	10.6%
534		Spoon River	8	28	30	22	16	23	-6	-27.3%	8	100.0%
504		Triton	36	53	87	92	141	107	49	53.3%	105	291.7%
516		Waubonsee	<u>103</u>	<u>108</u>	<u>107</u>	<u>92</u>	<u>114</u>	<u>104</u>	<u>22</u>	<u>23.9%</u>	<u>11</u>	<u>10.7%</u>
TOTALS			3,874	3,965	4,190	4,350	4,472	4,337	122	2.8%	598	15.4%
Pure												
		Mininum	0	4	2	8	7	8	-164	-53.6%	-166	-53.9%
		Maximum	339	303	319	316	358	331	74	200.0%	115	1000.0%
		Median	49	55	70	65	74	68	0	0.0%	13	23.5%
		Standard Deviation	82	77	78	78	79	77	32	40.9%	46	161.1%
		Average	81	83	87	91	93	90	3	8.8%	12	64.1%

SOURCE OF DATA: ICCB Centralized Data System--Annual Course (AC) Data



Illinois Community College Board  
Table B-10  
DUAL CREDIT COURSE ENROLLMENT BY COLLEGE  
IN CAREER AND TECHNICAL EDUCATION  
FISCAL YEARS 2015-2019

Dist.		FY 2017-2019					FY 2018-2019		FY 2015-2019		
		3-Year Average					1-Year Difference		5-Year Difference		
No.	District/College	2015	2016	2017	2018	2019	Number	Number	Percent	Number	Percent
503	Black Hawk	1,152	1,092	1,064	826	916	935	90	10.9%	-236	-20.5%
518	Carl Sandburg	292	412	392	451	300	381	-151	-33.5%	8	2.7%
508	City Colleges of Chicago	(315)	(790)	(433)	(1,195)	(1,313)	(980)	(118)	(9.9%)	(998)	(316.8%)
02	Harold Washington	61	251	6	558	494	353	-64	-11.5%	433	709.8%
04	Harry S Truman	76	76	24	57	57	46	0	0.0%	-19	-25.0%
01	Kennedy-King	20	44	5	91	195	97	104	114.3%	175	875.0%
03	Malcolm X	9	32	19	75	93	62	18	24.0%	84	933.3%
05	Olive-Harvey	0	33	46	161	82	96	-79	-49.1%	82	--
06	Richard J. Daley	27	135	187	143	314	215	171	119.6%	287	1063.0%
07	Wilbur Wright	122	219	146	110	78	111	-32	-29.1%	-44	-36.1%
502	College of DuPage	4,893	5,513	5,518	5,444	5,913	5,625	469	8.6%	1,020	20.8%
532	College of Lake County	1,004	860	791	1,053	994	946	-59	-5.6%	-10	-1.0%
507	Danville Area	1,037	1,044	1,133	1,089	1,193	1,138	104	9.6%	156	15.0%
509	Elgin	289	282	196	274	262	244	-12	-4.4%	-27	-9.3%
512	Harper	1,878	1,973	2,491	2,238	2,833	2,521	595	26.6%	955	50.9%
540	Heartland	346	316	391	551	754	565	203	36.8%	408	117.9%
519	Highland	976	1,111	1,079	977	938	998	-39	-4.0%	-38	-3.9%
514	Illinois Central	872	789	1,213	1,839	1,228	1,427	-611	-33.2%	356	40.8%
529	Illinois Eastern	(866)	(1,089)	(1,404)	(1,451)	(1,360)	(1,405)	(-91)	(-6.3%)	(494)	(57.0%)
04	Frontier	427	443	716	738	601	685	-137	-18.6%	174	40.7%
01	Lincoln Trail	72	111	89	98	127	105	29	29.6%	55	76.4%
02	Olney Central	91	146	146	207	215	189	8	3.9%	124	136.3%
03	Wabash Valley	276	389	453	408	417	426	9	2.2%	141	51.1%
513	Illinois Valley	116	95	494	421	399	438	-22	-5.2%	283	244.0%
530	John A. Logan	372	488	514	684	580	593	-104	-15.2%	208	55.9%
539	John Wood	37	38	97	88	82	89	-6	-6.8%	45	121.6%
525	Joliet Junior	1,417	746	2,042	2,433	2,841	2,439	408	16.8%	1,424	100.5%
520	Kankakee	267	231	313	413	355	360	-58	-14.0%	88	33.0%
501	Kaskaskia	3,150	3,146	2,898	2,663	2,495	2,685	-168	-6.3%	-655	-20.8%
523	Kishwaukee	544	530	588	490	799	626	309	63.1%	255	46.9%
517	Lake Land	1,267	1,252	1,510	1,455	1,291	1,419	-164	-11.3%	24	1.9%
536	Lewis and Clark	3,582	3,655	3,455	3,079	3,201	3,245	122	4.0%	-381	-10.6%
526	Lincoln Land	945	783	941	888	560	796	-328	-36.9%	-385	-40.7%
528	McHenry County	450	337	806	819	1,115	913	296	36.1%	665	147.8%
524	Moraine Valley	1,899	2,297	2,976	2,951	4,112	3,346	1,161	39.3%	2,213	116.5%
527	Morton	201	136	315	112	326	251	214	191.1%	125	62.2%
535	Oakton	400	500	531	697	1,427	885	730	104.7%	1,027	256.8%
505	Parkland	580	691	709	506	472	562	-34	-6.7%	-108	-18.6%
515	Prairie State	1,002	1,068	647	897	763	769	-134	-14.9%	-239	-23.9%
521	Rend Lake	531	652	546	504	662	571	158	31.3%	131	24.7%
537	Richland	796	1,005	940	755	753	816	-2	-0.3%	-43	-5.4%
511	Rock Valley	301	357	207	168	52	142	-116	-69.0%	-249	-82.7%
506	Sauk Valley	587	768	752	762	737	750	-25	-3.3%	150	25.6%
531	Shawnee	204	207	179	298	224	234	-74	-24.8%	20	9.8%
510	South Suburban	813	646	711	1,707	2,451	1,623	744	43.6%	1,638	201.5%
533	Southeastern Illinois	627	798	641	633	401	558	-232	-36.7%	-226	-36.0%
522	Southwestern Illinois	2,509	2,300	2,266	2,423	2,461	2,383	38	1.6%	-48	-1.9%
534	Spoon River	28	127	85	74	62	74	-12	-16.2%	34	121.4%
504	Triton	195	324	590	605	1,158	784	553	91.4%	963	493.8%
516	Waubonsee	<u>905</u>	<u>795</u>	<u>719</u>	<u>709</u>	<u>864</u>	<u>764</u>	<u>155</u>	<u>21.9%</u>	<u>-41</u>	<u>-4.5%</u>
TOTALS		37,645	39,243	42,577	44,622	48,647	45,282	4,025	9.0%	11,002	29.2%
Pure											
Mininum		0	32	5	57	52	46	-611	-69.0%	-655	-82.7%
Maximum		4,893	5,513	5,518	5,444	5,913	5,625	1,161	191.1%	2,213	1063.0%
Median		439	494	589	619	632	609	-1	-0.1%	86	33.0%
Standard Deviation		983	1,032	1,060	1,033	1,171	1,086	297	47.0%	534	259.5%
Average		784	818	887	930	1,013	943	84	12.0%	229	124.6%

SOURCE OF DATA: ICCB Centralized Data System--Annual Course (AC) Data





Illinois Community College Board  
Table B-11  
AVERAGE DUAL CREDIT CLASS SIZE BY COLLEGE  
IN CAREER AND TECHNICAL EDUCATION  
FISCAL YEARS 2015-2019

Dist.		FY 2017-2019					FY 2018-2019		FY 2015-2019		
		3-Year Average					1-Year Difference		5-Year Difference		
No.	District/College	2015	2016	2017	2018	2019	Number	Number	Percent	Number	Percent
503	Black Hawk	9.8	9.0	8.7	6.9	7.6	7.7	0.8	10.9%	-2.1	-21.8%
518	Carl Sandburg	7.3	9.2	8.2	8.8	6.3	7.8	-2.6	-29.3%	-1.1	-14.4%
508	City Colleges of Chicago	(5.6)	(9.8)	(6.3)	(10.7)	(12.2)	(9.7)	(1.5)	(13.9%)	(6.5)	(116.1%)
02	Harold Washington	4.4	17.9	2.0	18.0	17.0	12.3	-1.0	-5.4%	12.7	291.0%
04	Harry S Truman	6.9	5.1	3.0	5.7	8.1	5.6	2.4	42.9%	1.2	17.9%
01	Kennedy-King	20.0	6.3	2.5	6.1	17.7	8.8	11.7	192.2%	-2.3	-11.4%
03	Malcolm X	1.0	3.2	4.8	5.0	10.3	6.7	5.3	106.7%	9.3	933.3%
05	Olive-Harvey	--	8.3	7.7	12.4	5.1	8.4	-7.3	-58.6%	--	--
06	Richard J. Daley	4.5	9.0	5.7	8.4	11.2	8.4	2.8	33.3%	6.7	149.2%
07	Wilbur Wright	8.1	13.7	11.2	10.0	9.8	10.3	-0.3	-2.5%	1.6	19.9%
502	College of DuPage	14.4	18.2	17.4	17.2	16.5	17.0	-0.7	-4.1%	2.1	14.4%
532	College of Lake County	10.7	8.7	8.8	9.2	9.4	9.1	0.1	1.5%	-1.3	-12.2%
507	Danville Area	3.4	3.5	3.6	3.6	8.4	5.2	4.8	136.1%	5.0	149.5%
509	Elgin	4.2	4.3	3.5	4.2	4.0	3.9	-0.1	-2.9%	-0.2	-3.8%
512	Harper	14.6	12.0	12.0	10.4	12.4	11.6	2.0	18.8%	-2.2	-15.0%
540	Heartland	8.2	5.5	7.4	8.7	7.6	7.9	-1.1	-12.9%	-0.6	-7.5%
519	Highland	10.1	10.7	10.3	11.6	11.0	11.0	-0.6	-5.1%	1.0	9.7%
514	Illinois Central	17.4	15.2	15.8	18.6	13.5	15.9	-5.1	-27.4%	-3.9	-22.6%
529	Illinois Eastern	(6.7)	(8.6)	(7.0)	(7.3)	(6.5)	(6.9)	(-0.9)	(-11.6%)	(-0.2)	(-3.5%)
04	Frontier	7.4	9.0	7.2	7.7	6.8	7.2	-0.9	-11.2%	-0.5	-7.2%
01	Lincoln Trail	6.0	7.4	5.2	5.8	4.5	5.2	-1.2	-21.3%	-1.5	-24.4%
02	Olney Central	5.7	9.1	7.7	8.6	6.7	7.7	-1.9	-22.1%	1.0	18.1%
03	Wabash Valley	6.4	8.5	6.9	6.7	6.7	6.8	0.0	0.6%	0.3	4.8%
513	Illinois Valley	2.7	2.7	6.8	6.8	7.1	6.9	0.3	4.9%	4.4	164.1%
530	John A. Logan	8.7	11.3	13.5	11.8	13.2	12.8	1.4	11.8%	4.5	52.4%
539	John Wood	2.6	2.7	4.9	6.3	4.3	5.2	-2.0	-31.3%	1.7	63.3%
525	Joliet Junior	8.2	8.2	12.9	13.4	13.5	13.3	0.1	0.6%	5.3	65.2%
520	Kankakee	14.8	14.4	13.0	17.2	17.8	16.0	0.5	3.1%	2.9	19.7%
501	Kaskaskia	11.8	12.2	13.7	12.7	12.7	13.1	0.0	-0.1%	1.0	8.3%
523	Kishwaukee	11.6	12.0	10.0	10.2	11.3	10.5	1.0	10.2%	-0.3	-2.8%
517	Lake Land	7.8	7.4	7.5	6.4	6.3	6.8	-0.1	-1.3%	-1.4	-18.6%
536	Lewis and Clark	12.7	13.8	13.8	13.4	13.9	13.7	0.5	3.5%	1.2	9.6%
526	Lincoln Land	9.2	7.3	9.4	10.0	10.0	9.8	0.0	0.2%	0.8	9.0%
528	McHenry County	9.8	9.4	14.7	14.4	13.4	14.2	-0.9	-6.5%	3.7	37.3%
524	Moraine Valley	16.0	18.2	19.8	18.4	17.6	18.6	-0.9	-4.7%	1.6	10.1%
527	Morton	11.8	15.1	10.9	14.0	13.6	12.8	-0.4	-3.0%	1.8	14.9%
535	Oakton	13.3	14.7	12.1	15.2	18.8	15.3	3.6	23.9%	5.4	40.8%
505	Parkland	6.3	6.8	8.0	7.8	7.3	7.7	-0.5	-6.7%	1.0	15.2%
515	Prairie State	13.0	15.0	14.4	15.7	14.7	14.9	-1.1	-6.8%	1.7	12.8%
521	Rend Lake	11.3	7.5	6.3	4.8	7.9	6.3	3.1	64.2%	-3.4	-30.2%
537	Richland	10.3	8.9	9.7	8.5	7.9	8.7	-0.6	-6.6%	-2.4	-23.3%
511	Rock Valley	5.0	3.9	3.2	2.6	1.3	2.4	-1.4	-51.7%	-3.7	-74.7%
506	Sauk Valley	6.9	8.0	7.8	6.8	5.8	6.8	-1.0	-15.4%	-1.1	-16.6%
531	Shawnee	12.0	11.5	9.0	11.5	10.7	10.4	-0.8	-6.9%	-1.3	-11.1%
510	South Suburban	7.9	6.6	8.1	11.5	11.6	10.4	0.1	0.7%	3.7	47.2%
533	Southeastern Illinois	5.5	7.0	7.3	6.9	5.1	6.4	-1.8	-26.2%	-0.4	-7.7%
522	Southwestern Illinois	11.5	10.3	10.7	10.5	10.2	10.5	-0.3	-3.1%	-1.3	-11.3%
534	Spoon River	3.5	4.5	2.8	3.4	3.9	3.4	0.5	15.2%	0.4	10.7%
504	Triton	5.4	6.1	6.8	6.6	8.2	7.2	1.6	24.9%	2.8	51.6%
516	Waubonsee	<u>8.8</u>	<u>7.4</u>	<u>6.7</u>	<u>7.7</u>	<u>7.6</u>	<u>7.3</u>	<u>-0.1</u>	<u>-1.7%</u>	<u>-1.2</u>	<u>-13.7%</u>
TOTALS/AVERAGES		9.7	9.9	10.2	10.3	10.9	10.4	0.6	6.0%	1.2	11.9%
Pure											
Mininum		1.0	2.7	2.0	2.6	1.3	2.4	-7.3	-58.6%	-3.9	-74.7%
Maximum		20.0	18.2	19.8	18.6	18.8	18.6	11.7	192.2%	12.7	933.3%
Median		8.2	8.8	8.0	8.8	9.6	8.6	-0.1	-2.1%	1.0	9.6%
Standard Deviation		4.1	4.1	4.0	4.2	4.2	3.8	2.7	42.1%	3.3	146.2%
Average		8.9	9.3	8.8	9.8	9.9	9.5	0.2	6.9%	1.1	40.2%

SOURCE OF DATA: ICCB Centralized Data System--Annual Course (AC) Data





Illinois Community College Board  
Table B-12  
TOP FIVE DUAL CREDIT COURSE ENROLLMENTS BY COLLEGE  
IN CAREER AND TECHNICAL EDUCATION  
FISCAL YEAR 2019

Dist. No. District/College	48.0508 Welding Technology/Welder	51.3902 Nursing Assistant/Aide and Patient Care Assistant/Aide	52.0407 Business/Office Automation/ Technology/Data Entry	11.0201 Computer Programming/ Programmer, General	51.0710 Medical Office Assistant/ Specialist	Total
503 Black Hawk	458	89	13	18	0	578
518 Carl Sandburg	28	0	0	1	0	29
508 City Colleges of Chicago	(0)	(0)	(42)	(89)	(97)	(228)
02 Harold Washington	0	0	1	8	1	10
04 Harry S Truman	0	0	0	2	0	2
01 Kennedy-King	0	0	0	7	38	45
03 Malcolm X	0	0	0	2	58	60
05 Olive-Harvey	0	0	11	0	0	11
06 Richard J. Daley	0	0	23	59	0	82
07 Wilbur Wright	0	0	7	11	0	18
502 College of DuPage	39	80	0	227	53	399
532 College of Lake County	39	110	0	0	0	149
507 Danville Area	32	24	0	15	48	119
509 Elgin	26	18	0	1	0	45
512 Harper	0	275	157	0	653	1,085
540 Heartland	115	141	0	15	65	336
519 Highland	49	68	26	37	0	180
514 Illinois Central	207	304	0	0	256	767
529 Illinois Eastern	(166)	(77)	(3)	(3)	(59)	(308)
04 Frontier	11	53	0	0	39	103
01 Lincoln Trail	64	0	3	0	9	76
02 Olney Central	63	11	0	0	0	74
03 Wabash Valley	28	13	0	3	11	55
513 Illinois Valley	141	66	22	0	25	254
530 John A. Logan	52	102	0	0	0	154
539 John Wood	27	15	0	0	0	42
525 Joliet Junior	157	227	0	14	0	398
520 Kankakee	35	105	0	0	0	140
501 Kaskaskia	63	53	773	35	110	1,034
523 Kishwaukee	96	71	0	0	15	182
517 Lake Land	165	155	33	4	14	371
536 Lewis and Clark	283	0	65	60	69	477
526 Lincoln Land	22	9	0	17	0	48
528 McHenry County	0	115	0	0	0	115
524 Moraine Valley	39	0	971	22	0	1,032
527 Morton	0	0	17	0	0	17
535 Oakton	23	57	0	0	420	500
505 Parkland	18	45	0	13	104	180
515 Prairie State	45	0	0	0	0	45
521 Rend Lake	28	38	0	0	0	66
537 Richland	46	32	163	0	0	241
511 Rock Valley	8	2	0	18	0	28
506 Sauk Valley	65	164	2	11	55	297
531 Shawnee	0	40	0	0	42	82
510 South Suburban	0	0	4	1,193	0	1,197
533 Southeastern Illinois	91	1	4	2	0	98
522 Southwestern Illinois	262	60	230	593	96	1,241
534 Spoon River	16	9	0	0	0	25
504 Triton	0	158	0	0	12	170
516 Waubensee	<u>104</u>	<u>20</u>	<u>0</u>	<u>3</u>	<u>76</u>	<u>203</u>
TOTALS	2,945	2,730	2,525	2,391	2,269	12,860
Grand Total	124,614	124,614	124,614	124,614	124,614	124,614
Percent Top Five of Grand Total	2.4%	2.2%	2.0%	1.9%	1.8%	10.3%

SOURCE OF DATA: ICCB Centralized Data System--Annual Course (AC) Data



Illinois Community College Board  
Table B-13  
STATEWIDE DUAL CREDIT COURSE ENROLLMENT BY 6-DIGIT CIP  
FOR FISCAL YEARS 2015-2019

CIP	COURSE NAME	2015	2016	2017	2018	2019	FY 2017-2019 3-Year Average	FY 2018-2019 1-Year Difference		FY 2015-2019 5-Year Difference	
							Number	Number	Percent	Number	Percent
01.0101	Agricultural Business and Management, General.	134	177	215	242	185	214	-57	-23.6%	51	38.1%
01.0102	Agribusiness/Agricultural Business Operations.	0	0	0	8	0	3	-8	-100.0%	0	--
01.0103	Agricultural Economics.	74	40	41	70	43	51	-27	-38.6%	-31	-41.9%
01.0105	Agricultural/Farm Supplies Retailing and Wholesaling.	0	0	0	9	15	8	6	66.7%	15	--
01.0106	Agricultural Business Technology	1	0	0	0	0	0	0	--	-1	-100.0%
01.0201	Agricultural Mechanization, General.	151	155	134	105	103	114	-2	-1.9%	-48	-31.8%
01.0301	Agricultural Production Operations, General.	102	139	152	146	174	157	28	19.2%	72	70.6%
01.0302	Animal/Livestock Husbandry and Production.	123	202	170	194	164	176	-30	-15.5%	41	33.3%
01.0304	Crop Production.	1	7	9	25	27	20	2	8.0%	26	2600.0%
01.0508	Taxidermy/Taxidermist.	0	0	0	0	1	0	1	--	1	--
01.0601	Applied Horticulture/Horticulture Operations, General.	254	238	182	204	161	182	-43	-21.1%	-93	-36.6%
01.0602	Arboriculture (Cross to 01.0699 for IPEDS)	13	25	23	0	0	8	0	--	-13	-100.0%
01.0603	Ornamental Horticulture.	307	284	271	291	348	303	57	19.6%	41	13.4%
01.0604	Greenhouse Operations and Management.	75	29	93	47	89	76	42	89.4%	14	18.7%
01.0605	Landscaping and Groundskeeping.	89	44	84	82	47	71	-35	-42.7%	-42	-47.2%
01.0607	Turf and Turfgrass Management	0	9	0	0	0	0	0	--	0	--
01.0901	Animal Sciences, General.	13	24	52	49	26	42	-23	-46.9%	13	100.0%
01.1102	Agronomy and Crop Science.	68	49	84	90	57	77	-33	-36.7%	-11	-16.2%
01.1103	Horticultural Science.	109	34	101	112	127	113	15	13.4%	18	16.5%
01.1201	Soil Science and Agronomy, General (Moved from 02.0501)	2	0	9	0	0	3	0	--	-2	-100.0%
01.9994	Career Exploration.	22	22	13	11	11	12	0	0.0%	-11	-50.0%
01.9997	Topics.	6	0	0	4	30	11	26	650.0%	24	400.0%
01.9998	Internships.	0	0	1	0	1	1	1	--	1	--
01.9999	Agriculture, Agriculture Operations, and Related Sciences, Other.	5	5	8	7	0	5	-7	-100.0%	-5	-100.0%
03.0101	Natural Resources/Conservation, General.	0	0	1	0	2	1	2	--	2	--
03.0201	Natural Resources Management and Policy.	0	12	2	4	0	2	-4	-100.0%	0	--
03.0511	Forest Technology/Technician.	0	0	0	17	24	14	7	41.2%	24	--
03.0601	Wildlife, Fish and Wildlands Science and Management.	25	10	11	17	26	18	9	52.9%	1	4.0%
04.0201	Architecture.	8	20	34	38	5	26	-33	-86.8%	-3	-37.5%
05.0101	African Studies	1	0	0	0	0	0	0	--	-1	-100.0%
05.0103	Asian Studies/Civilization	1	0	0	0	0	0	0	--	-1	-100.0%
05.0107	Latin American Studies.	0	3	26	25	37	29	12	48.0%	37	--
05.0108	Near and Middle Eastern Studies.	0	1	0	1	1	1	0	0.0%	1	--
05.0201	African-American/Black Studies.	98	28	25	146	136	102	-10	-6.8%	38	38.8%
05.0202	American Indian/Native American Studies.	0	1	0	1	1	1	0	0.0%	1	--
05.0299	Ethnic, Cultural Minority, Gender, and Group Studies, Other.	1	4	0	1	3	1	2	200.0%	2	200.0%
09.0100	Communication, General	0	1	0	0	0	0	0	--	0	--
09.0101	Speech Communication and Rhetoric.	0	0	158	111	257	175	146	131.5%	257	--
09.0102	Mass Communication/Media Studies.	33	5	15	29	20	21	-9	-31.0%	-13	-39.4%
09.0401	Journalism.	347	287	302	221	280	268	59	26.7%	-67	-19.3%
09.0402	Broadcast Journalism	9	4	2	0	0	1	0	--	-9	-100.0%
09.0701	Radio and Television.	108	82	88	68	58	71	-10	-14.7%	-50	-46.3%
09.0702	Digital Communication and Media/Multimedia	1	0	0	0	0	0	0	--	-1	-100.0%
09.0799	Radio, Television, and Digital Communication, Other.	0	0	7	1	3	4	2	200.0%	3	--
09.0903	Advertising.	16	0	25	1	1	9	0	0.0%	-15	-93.8%
09.9998	Internships.	1	8	3	0	0	1	0	--	-1	-100.0%
10.0201	Photographic and Film/Video Technology/Technician and Assistant.	183	181	130	140	186	152	46	32.9%	3	1.6%
10.0202	Radio and Television Broadcasting Technology/Technician.	21	26	6	8	0	5	-8	-100.0%	-21	-100.0%
10.0203	Recording Arts Technology/Technician.	0	1	0	27	0	9	-27	-100.0%	0	--
10.0301	Graphic Communications, General.	36	13	7	7	19	11	12	171.4%	-17	-47.2%
10.0303	Prepress/Desktop Publishing and Digital Imaging Design.	483	477	455	511	696	554	185	36.2%	213	44.1%
10.0304	Animation, Interactive Technology, Video Graphics and Special Effects.	222	169	333	328	321	327	-7	-2.1%	99	44.6%
10.0305	Graphic and Printing Equipment Operator, General Production.	41	50	67	46	45	53	-1	-2.2%	4	9.8%
10.9997	Topics.	0	0	1	0	0	0	0	--	0	--
10.9999	Communications Technologies/Technicians and Support Services, Other.	19	14	22	24	31	26	7	29.2%	12	63.2%
11.0101	Computer and Information Sciences, General.	880	1,577	1,268	1,098	1,226	1,197	128	11.7%	346	39.3%
11.0103	Information Technology.	133	97	121	115	133	123	18	15.7%	0	0.0%



Illinois Community College Board  
Table B-13  
STATEWIDE DUAL CREDIT COURSE ENROLLMENT BY 6-DIGIT CIP  
FOR FISCAL YEARS 2015-2019

CIP	COURSE NAME	2015	2016	2017	2018	2019	FY 2017-2019 3-Year Average	FY 2018-2019		FY 2015-2019	
							Number	Number	Percent	Number	Percent
11.0201	Computer Programming/Programmer, General.	1,155	1,639	1,800	2,221	2,392	2,138	171	7.7%	1,237	107.1%
11.0202	Computer Programming, Specific Applications.	87	65	107	64	108	93	44	68.8%	21	24.1%
11.0203	Computer Programming, Vendor/Product Certification.	139	80	108	29	21	53	-8	-27.6%	-118	-84.9%
11.0301	Data Processing and Data Processing Technology/Technician.	89	74	76	91	14	60	-77	-84.6%	-75	-84.3%
11.0401	Information Science/Studies.	4	0	1	1	94	32	93	9300.0%	90	2250.0%
11.0501	Computer Systems Analysis/Analyst	13	10	2	0	0	1	0	--	-13	-100.0%
11.0601	Data Entry/Microcomputer Applications, General.	285	363	436	342	291	356	-51	-14.9%	6	2.1%
11.0602	Word Processing.	24	23	28	26	15	23	-11	-42.3%	-9	-37.5%
11.0801	Web Page, Digital/Multimedia and Information Resources Design.	748	562	590	434	372	465	-62	-14.3%	-376	-50.3%
11.0802	Data Modeling/Warehousing and Database Administration.	24	11	17	11	13	14	2	18.2%	-11	-45.8%
11.0803	Computer Graphics.	51	91	139	44	102	95	58	131.8%	51	100.0%
11.0901	Computer Systems Networking and Telecommunications.	1,716	1,420	1,548	1,404	1,419	1,457	15	1.1%	-297	-17.3%
11.1002	System, Networking, and LAN/WAN Management/Manager	15	0	0	0	0	0	0	--	-15	-100.0%
11.1003	Computer and Information Systems Security/Information Assurance.	19	13	5	7	9	7	2	28.6%	-10	-52.6%
11.1004	Web/Multimedia Management and Webmaster.	155	59	71	80	21	57	-59	-73.8%	-134	-86.5%
11.1099	Computer/Information Technology Services Administration and Management, Other.	73	82	76	42	67	62	25	59.5%	-6	-8.2%
11.9997	Topics.	13	18	20	19	22	20	3	15.8%	9	69.2%
11.9998	Internships.	1	0	0	0	0	0	0	--	-1	-100.0%
12.0401	Cosmetology/Cosmetologist, General.	843	815	763	709	644	705	-65	-9.2%	-199	-23.6%
12.0406	Make-up Artist/Specialist	3	0	0	0	0	0	0	--	-3	-100.0%
12.0409	Aesthetician/Esthetician and Skin Care Specialist.	149	155	138	145	125	136	-20	-13.8%	-24	-16.1%
12.0412	Salon/Beauty Salon Management/Manager.	295	311	274	259	226	253	-33	-12.7%	-69	-23.4%
12.0500	Cooking and Related Culinary Arts, General.	0	0	0	0	11	4	11	--	11	--
12.0501	Baking and Pastry Arts/Baker/Pastry Chef.	7	6	62	124	111	99	-13	-10.5%	104	1485.7%
12.0502	Bartending/Bartender.	0	0	0	0	1	0	1	--	1	--
12.0503	Culinary Arts/Chef Training.	313	229	502	485	483	490	-2	-0.4%	170	54.3%
12.0504	Restaurant, Culinary, and Catering Management/Manager.	412	641	750	849	1,515	1,038	666	78.4%	1,103	267.7%
12.0505	Food Preparation/Professional Cooking/Kitchen Assistant.	0	54	0	72	68	47	-4	-5.6%	68	--
12.0507	Food Service, Waiter/Waitress, and Dining Room Management/Manager.	0	0	0	11	6	6	-5	-45.5%	6	--
12.9996	Certification/Licensure Review.	66	37	47	32	40	40	8	25.0%	-26	-39.4%
12.9998	Internships. (1.2 only)	0	37	0	0	0	0	0	--	0	--
13.0101	Education, General.	116	134	122	158	128	136	-30	-19.0%	12	10.3%
13.0201	Bilingual and Multilingual Education.	0	0	1	0	1	1	1	--	1	--
13.0299	Bilingual, Multilingual, and Multicultural Education, Other.	0	0	0	0	28	9	28	--	28	--
13.0501	Educational/Instructional Technology.	0	2	1	12	28	14	16	133.3%	28	--
13.0901	Social and Philosophical Foundations of Education.	288	302	298	224	329	284	105	46.9%	41	14.2%
13.1001	Special Education and Teaching, General.	0	3	0	1	18	6	17	1700.0%	18	--
13.1202	Elementary Education and Teaching.	4	5	2	4	28	11	24	600.0%	24	600.0%
13.1209	Kindergarten/Preschool Education and Teaching	15	10	0	0	0	0	0	--	-15	-100.0%
13.1210	Early Childhood Education and Teaching.	108	87	84	167	105	119	-62	-37.1%	-3	-2.8%
13.1301	Agricultural Teacher Education.	0	0	0	0	12	4	12	--	12	--
13.1307	Health Teacher Education.	340	667	760	786	315	620	-471	-59.9%	-25	-7.4%
13.1314	Physical Education Teaching and Coaching.	0	0	1	18	4	8	-14	-77.8%	4	--
13.1501	Teacher Assistant/Aide.	121	134	2	62	4	23	-58	-93.5%	-117	-96.7%
13.9997	Topics.	73	4	5	3	7	5	4	133.3%	-66	-90.4%
13.9998	Internships.	0	10	8	0	17	8	17	--	17	--
14.0101	Engineering, General.	25	22	15	22	3	13	-19	-86.4%	-22	-88.0%
14.1001	Electrical and Electronics Engineering	4	3	6	1	0	2	-1	-100.0%	-4	-100.0%
14.1101	Engineering Mechanics.	9	16	17	10	7	11	-3	-30.0%	-2	-22.2%
14.1201	Engineering Physics/Applied Physics.	8	13	4	26	18	16	-8	-30.8%	10	125.0%
14.4201	Mechatronics, Robotics, and Automation Engineering.	9	16	12	60	0	24	-60	-100.0%	-9	-100.0%
15.0000	Engineering Technology, General.	16	40	26	49	10	28	-39	-79.6%	-6	-37.5%
15.0101	Architectural Engineering Technology/Technician.	1	8	17	23	32	24	9	39.1%	31	3100.0%
15.0201	Civil Engineering Technology/Technician.	0	23	15	13	10	13	-3	-23.1%	10	--
15.0303	Electrical, Electronic and Communications Engineering Technology/Technician.	344	301	252	230	314	265	84	36.5%	-30	-8.7%
15.0304	Laser and Optical Technology/Technician.	22	16	10	15	17	14	2	13.3%	-5	-22.7%
15.0305	Telecommunications Technology/Technician	10	0	0	0	0	0	0	--	-10	-100.0%



Illinois Community College Board  
Table B-13  
STATEWIDE DUAL CREDIT COURSE ENROLLMENT BY 6-DIGIT CIP  
FOR FISCAL YEARS 2015-2019

CIP	COURSE NAME	2015	2016	2017	2018	2019	FY 2017-2019 3-Year Average	FY 2018-2019 1-Year Difference		FY 2015-2019 5-Year Difference	
							Number	Number	Percent	Number	Percent
15.0403	Electromechanical Technology/Electromechanical Engineering Technology.	0	1	3	4	11	6	7	175.0%	11	--
15.0405	Robotics Technology/Technician.	5	14	18	20	20	19	0	0.0%	15	300.0%
15.0406	Automation Engineer Technology/Technician.	0	0	0	0	284	95	284	--	284	--
15.0410	Fluid Power Technology (Cross to 15.1103 for IPEDS)	2	7	1	2	15	6	13	650.0%	13	650.0%
15.0411	Automated Manufacturing Technology (Cross to 15.0499 for IPEDS)	88	49	111	113	445	223	332	293.8%	357	405.7%
15.0503	Energy Management and Systems Technology/Technician	0	2	0	0	0	0	0	--	0	--
15.0508	Hazardous Materials Management and Waste Technology/Technician.	0	0	0	8	0	3	-8	-100.0%	0	--
15.0612	Industrial Technology/Technician	11	0	22	0	0	7	0	--	-11	-100.0%
15.0613	Manufacturing Engineering Technology/Technician.	175	227	143	311	285	246	-26	-8.4%	110	62.9%
15.0701	Occupational Safety and Health Technology/Technician.	145	80	113	115	127	118	12	10.4%	-18	-12.4%
15.0702	Quality Control Technology/Technician.	78	76	110	75	99	95	24	32.0%	21	26.9%
15.0703	Industrial Safety Technology/Technician.	30	9	28	9	27	21	18	200.0%	-3	-10.0%
15.0805	Mechanical Engineering/Mechanical Technology/Technician.	103	126	151	156	0	102	-156	-100.0%	-103	-100.0%
15.0901	Mining Technology/Technician.	13	19	11	13	10	11	-3	-23.1%	-3	-23.1%
15.0903	Petroleum Technology/Technician.	0	0	0	1	0	0	-1	-100.0%	0	--
15.1201	Computer Engineering Technology/Technician.	231	204	183	206	212	200	6	2.9%	-19	-8.2%
15.1203	Computer Hardware Technology/Technician.	60	93	99	78	56	78	-22	-28.2%	-4	-6.7%
15.1301	Drafting and Design Technology/Technician, General.	591	589	706	610	1,076	797	466	76.4%	485	82.1%
15.1302	CAD/CADD Drafting and/or Design Technology/Technician.	896	1,008	1,184	1,058	1,662	1,301	604	57.1%	766	85.5%
15.1303	Architectural Drafting and Architectural CAD/CADD.	68	63	79	96	85	87	-11	-11.5%	17	25.0%
15.1305	Electrical/Electronics Drafting and Electrical/Electronics CAD/CADD	22	7	0	0	0	0	0	--	-22	-100.0%
15.1306	Mechanical Drafting and Mechanical Drafting CAD/CADD.	21	14	22	23	8	18	-15	-65.2%	-13	-61.9%
15.1601	Nanotechnology.	31	34	36	22	33	30	11	50.0%	2	6.5%
15.9997	Topics.	81	124	152	120	157	143	37	30.8%	76	93.8%
15.9999	Engineering Technologies and Engineering-Related Fields, Other.	0	30	16	42	29	29	-13	-31.0%	29	--
16.0103	Language Interpretation and Translation	26	6	0	0	0	0	0	--	-26	-100.0%
16.0301	Chinese Language and Literature.	12	9	1	0	6	2	6	--	-6	-50.0%
16.0302	Japanese Language and Literature.	1	4	0	14	29	14	15	107.1%	28	2800.0%
16.0501	German Language and Literature.	134	161	178	223	168	190	-55	-24.7%	34	25.4%
16.0901	French Language and Literature.	326	267	269	211	250	243	39	18.5%	-76	-23.3%
16.0902	Italian Language and Literature.	0	0	15	22	18	18	-4	-18.2%	18	--
16.0905	Spanish Language and Literature.	4,708	4,975	5,157	5,046	5,538	5,247	492	9.8%	830	17.6%
16.1101	Arabic Language and Literature.	0	1	0	0	51	17	51	--	51	--
16.1203	Latin Language and Literature	1	1	0	0	0	0	0	--	-1	-100.0%
16.1601	American Sign Language (ASL).	0	4	7	2	55	21	53	2650.0%	55	--
16.1603	Sign Language Interpretation and Translation.	32	36	45	42	50	46	8	19.0%	18	56.3%
16.9996	Certification/Licensure Review.	13	27	26	22	46	31	24	109.1%	33	253.8%
19.0101	Family and Consumer Sciences/Human Sciences, General.	0	0	930	1,154	1,420	1,168	266	23.1%	1,420	--
19.0401	Family Resource Management Studies, General	0	0	1	0	0	0	0	--	0	--
19.0402	Consumer Economics.	425	515	2	3	3	3	0	0.0%	-422	-99.3%
19.0501	Foods, Nutrition, and Wellness Studies, General.	7	8	2	3	75	27	72	2400.0%	68	971.4%
19.0504	Human Nutrition.	91	116	138	89	106	111	17	19.1%	15	16.5%
19.0706	Child Development.	0	10	14	12	33	20	21	175.0%	33	--
19.0708	Child Care and Support Services Management.	0	2	1	3	0	1	-3	-100.0%	0	--
19.0709	Child Care Provider/Assistant.	582	531	512	655	874	680	219	33.4%	292	50.2%
19.0901	Apparel and Textiles, General.	68	61	44	14	43	34	29	207.1%	-25	-36.8%
19.0902	Apparel and Textile Manufacture.	17	7	22	33	23	26	-10	-30.3%	6	35.3%
19.9997	Topics.	29	0	23	45	32	33	-13	-28.9%	3	10.3%
19.9998	Internships.	5	5	2	5	0	2	-5	-100.0%	-5	-100.0%
22.0302	Legal Assistant/Paralegal.	0	2	2	2	3	2	1	50.0%	3	--
23.0101	English Language and Literature, General.	193	268	241	230	260	244	30	13.0%	67	34.7%
23.1301	Writing, General.	15,575	16,671	17,278	19,082	19,798	18,719	716	3.8%	4,223	27.1%
23.1302	Creative Writing.	33	24	45	49	73	56	24	49.0%	40	121.2%
23.1303	Professional, Technical, Business, and Scientific Writing.	49	85	101	229	188	173	-41	-17.9%	139	283.7%
23.1304	Rhetoric and Composition.	3,541	3,710	3,967	4,078	4,406	4,150	328	8.0%	865	24.4%
23.1402	American Literature (United States).	459	531	567	693	718	659	25	3.6%	259	56.4%
23.1404	English Literature (British and Commonwealth).	31	189	103	244	139	162	-105	-43.0%	108	348.4%



Illinois Community College Board  
Table B-13  
STATEWIDE DUAL CREDIT COURSE ENROLLMENT BY 6-DIGIT CIP  
FOR FISCAL YEARS 2015-2019

CIP	COURSE NAME	2015	2016	2017	2018	FY 2017-2019 3-Year Average		FY 2018-2019 1-Year Difference		FY 2015-2019 5-Year Difference	
						2019	Number	Number	Percent	Number	Percent
23.9997	Topics.	24	0	24	0	0	8	0	--	-24	-100.0%
24.0101	Liberal Arts and Sciences/Liberal Studies.	0	0	0	0	4	1	4	--	4	--
24.0102	General Studies.	1,167	926	966	1,262	1,555	1,261	293	23.2%	388	33.2%
24.0103	Humanities/Humanistic Studies.	245	459	355	351	373	360	22	6.3%	128	52.2%
24.0105	Orientation Courses (Cross to 24.0199 for IPEDS)	900	1,060	1,087	938	626	884	-312	-33.3%	-274	-30.4%
24.0197	Critical Thinking, Analytic Thinking, Methods of Inquiry and/or Practical Thinking	0	0	1	0	0	0	0	--	0	--
24.0198	Internships.	48	44	115	118	154	129	36	30.5%	106	220.8%
24.0199	Liberal Arts and Sciences, General Studies and Humanities, Other	0	2	3	0	0	1	0	--	0	--
24.9997	Topics.	17	54	0	13	11	8	-2	-15.4%	-6	-35.3%
24.9999	Directed Independent Study	0	0	0	0	7	2	7	--	7	--
26.0101	Biology/Biological Sciences, General.	1,764	2,549	2,656	2,650	2,709	2,672	59	2.2%	945	53.6%
26.0301	Botany/Plant Biology.	8	13	9	8	3	7	-5	-62.5%	-5	-62.5%
26.0403	Anatomy.	942	1,006	1,332	1,188	1,214	1,245	26	2.2%	272	28.9%
26.0502	Microbiology, General.	34	36	53	19	25	32	6	31.6%	-9	-26.5%
26.0701	Zoology/Animal Biology.	13	17	97	70	124	97	54	77.1%	111	853.8%
26.0801	Genetics, General.	4	3	5	1	5	4	4	400.0%	1	25.0%
26.1001	Pharmacology.	20	30	32	26	47	35	21	80.8%	27	135.0%
26.1301	Ecology.	132	75	175	173	152	167	-21	-12.1%	20	15.2%
26.1302	Marine Biology and Biological Oceanography.	109	103	99	94	101	98	7	7.4%	-8	-7.3%
26.1305	Environmental Biology.	513	310	323	263	331	306	68	25.9%	-182	-35.5%
26.9997	Topics.	2	0	0	0	0	0	0	--	-2	-100.0%
27.0101	Mathematics, General.	5,478	6,454	6,674	6,545	7,093	6,771	548	8.4%	1,615	29.5%
27.0103	Analysis and Functional Analysis.	67	58	69	81	52	67	-29	-35.8%	-15	-22.4%
27.0199	Mathematics, Other	2	0	0	0	0	0	0	--	-2	-100.0%
27.0301	Applied Mathematics, General.	1,145	1,292	1,162	1,503	1,797	1,487	294	19.6%	652	56.9%
27.0501	Statistics, General.	1,407	1,724	1,967	2,449	2,625	2,347	176	7.2%	1,218	86.6%
27.9997	Topics.	0	0	1	0	0	0	0	--	0	--
30.0101	Biological and Physical Sciences.	59	77	95	75	80	83	5	6.7%	21	35.6%
30.0197	Topics.	0	0	18	32	21	24	-11	-34.4%	21	--
31.0101	Parks, Recreation and Leisure Studies.	1	0	3	0	1	1	1	--	0	0.0%
31.0501	Health and Physical Education/Fitness, General.	2,384	2,456	2,887	2,368	2,211	2,489	-157	-6.6%	-173	-7.3%
31.0504	Sport and Fitness Administration/Management.	4	7	1	1	0	1	-1	-100.0%	-4	-100.0%
32.0107	Career Exploration/Awareness Skills.	0	0	16	64	68	49	4	6.3%	68	--
36.0119	Aircraft Pilot (Private)	15	18	15	13	16	15	3	23.1%	1	6.7%
38.0101	Philosophy.	175	272	290	235	285	270	50	21.3%	110	62.9%
38.0102	Logic.	96	150	108	123	104	112	-19	-15.4%	8	8.3%
38.0103	Ethics.	103	178	178	227	265	223	38	16.7%	162	157.3%
38.0201	Religion/Religious Studies.	114	144	256	323	327	302	4	1.2%	213	186.8%
40.0101	Physical Sciences.	10	37	15	19	29	21	10	52.6%	19	190.0%
40.0201	Astronomy.	87	153	124	99	215	146	116	117.2%	128	147.1%
40.0401	Atmospheric Sciences and Meteorology, General.	8	7	20	18	29	22	11	61.1%	21	262.5%
40.0499	Atmospheric Sciences and Meteorology, Other.	0	0	0	0	1	0	1	--	1	--
40.0501	Chemistry, General.	764	842	749	646	726	707	80	12.4%	-38	-5.0%
40.0503	Inorganic Chemistry.	256	219	259	230	196	228	-34	-14.8%	-60	-23.4%
40.0504	Organic Chemistry.	18	24	29	53	49	44	-4	-7.5%	31	172.2%
40.0599	Chemistry, Other.	16	22	11	11	9	10	-2	-18.2%	-7	-43.8%
40.0601	Geology/Earth Science, General.	543	587	639	555	636	610	81	14.6%	93	17.1%
40.0603	Geophysics and Seismology.	0	0	0	0	1	0	1	--	1	--
40.0607	Oceanography, Chemical and Physical.	58	38	64	64	58	62	-6	-9.4%	0	0.0%
40.0801	Physics, General.	544	607	512	378	284	391	-94	-24.9%	-260	-47.8%
40.9997	Topics.	0	0	0	1	0	0	-1	-100.0%	0	--
42.0101	Psychology, General.	3,851	3,047	3,404	3,676	3,522	3,534	-154	-4.2%	-329	-8.5%
42.2701	Cognitive Psychology and Psycholinguistics.	34	74	52	22	25	33	3	13.6%	-9	-26.5%
42.2703	Developmental and Child Psychology.	376	412	335	432	490	419	58	13.4%	114	30.3%
42.2707	Social Psychology.	14	25	77	33	66	59	33	100.0%	52	371.4%
42.2806	Educational Psychology.	3	10	7	5	9	7	4	80.0%	6	200.0%
43.0102	Corrections.	174	111	159	129	183	157	54	41.9%	9	5.2%



Illinois Community College Board  
Table B-13  
STATEWIDE DUAL CREDIT COURSE ENROLLMENT BY 6-DIGIT CIP  
FOR FISCAL YEARS 2015-2019

CIP	COURSE NAME	2015	2016	2017	2018	2019	FY 2017-2019 3-Year Average	FY 2018-2019		FY 2015-2019	
							Number	Number	Percent	Number	Percent
43.0103	Criminal Justice/Law Enforcement Administration.	386	267	443	516	367	442	-149	-28.9%	-19	-4.9%
43.0104	Criminal Justice/Safety Studies.	203	236	294	215	219	243	4	1.9%	16	7.9%
43.0106	Forensic Science and Technology.	5	1	52	48	67	56	19	39.6%	62	1240.0%
43.0107	Criminal Justice/Police Science.	798	1,089	653	1,157	1,316	1,042	159	13.7%	518	64.9%
43.0114	Law Enforcement Investigation and Interviewing.	0	0	0	3	2	2	-1	-33.3%	2	--
43.0199	Corrections and Criminal Justice, Other.	0	1	45	32	44	40	12	37.5%	44	--
43.0201	Fire Prevention and Safety Technology/Technician.	140	107	100	153	145	133	-8	-5.2%	5	3.6%
43.0202	Fire Services Administration.	17	10	16	13	15	15	2	15.4%	-2	-11.8%
43.0203	Fire Science/Fire-fighting.	397	500	403	574	470	482	-104	-18.1%	73	18.4%
43.0204	Fire Systems Technology.	0	0	0	5	5	3	0	0.0%	5	--
43.0301	Homeland Security.	1	1	3	0	0	1	0	--	-1	-100.0%
43.9994	Career Exploration.	127	114	101	76	94	90	18	23.7%	-33	-26.0%
43.9997	Topics.	38	11	5	7	15	9	8	114.3%	-23	-60.5%
43.9998	Internship.	12	5	18	12	13	14	1	8.3%	1	8.3%
44.0701	Social Work.	1	0	1	53	55	36	2	3.8%	54	5400.0%
45.0101	Social Sciences, General.	123	130	25	26	71	41	45	173.1%	-52	-42.3%
45.0201	Anthropology.	24	116	37	157	178	124	21	13.4%	154	641.7%
45.0301	Archeology.	0	0	1	0	1	1	1	--	1	--
45.0401	Criminology.	36	118	26	62	105	64	43	69.4%	69	191.7%
45.0501	Demography and Population Studies.	0	20	23	20	0	14	-20	-100.0%	0	--
45.0601	Economics, General.	500	498	518	778	770	689	-8	-1.0%	270	54.0%
45.0701	Geography.	159	96	147	164	102	138	-62	-37.8%	-57	-35.8%
45.0901	International Relations and Affairs.	93	31	9	76	61	49	-15	-19.7%	-32	-34.4%
45.1001	Political Science and Government, General.	1,813	1,212	1,244	1,335	1,155	1,245	-180	-13.5%	-658	-36.3%
45.1101	Sociology.	1,211	1,131	1,099	1,320	1,320	1,246	0	0.0%	109	9.0%
45.9997	Topics.	9	20	5	16	20	14	4	25.0%	11	122.2%
46.0000	Construction Trades, General.	0	22	35	56	39	43	-17	-30.4%	39	--
46.0201	Carpentry/Carpenter.	459	433	500	464	471	478	7	1.5%	12	2.6%
46.0299	Carpenter/Construction, Other.	52	58	66	40	10	39	-30	-75.0%	-42	-80.8%
46.0302	Electrician.	2	10	30	10	38	26	28	280.0%	36	1800.0%
46.0401	Building/Property Maintenance.	32	62	79	88	99	89	11	12.5%	67	209.4%
46.0403	Building/Home/Construction Inspection/Inspector.	6	1	11	23	26	20	3	13.0%	20	333.3%
47.0103	Communications Systems Installation and Repair Technology.	8	36	9	9	0	6	-9	-100.0%	-8	-100.0%
47.0104	Computer Installation and Repair Technology/Technician.	441	417	530	389	506	475	117	30.1%	65	14.7%
47.0105	Industrial Electronics Technology/Technician.	0	12	27	24	10	20	-14	-58.3%	10	--
47.0199	Electrical/Electronics Maintenance and Repair Technology, Other.	93	68	60	58	64	61	6	10.3%	-29	-31.2%
47.0201	Heating, Air Conditioning, Ventilation and Refrigeration Maintenance Technology/Technician.	40	44	38	36	49	41	13	36.1%	9	22.5%
47.0303	Industrial Mechanics and Maintenance Technology.	22	15	10	0	2	4	2	--	-20	-90.9%
47.0603	Autobody/Collision and Repair Technology/Technician.	418	297	245	269	166	227	-103	-38.3%	-252	-60.3%
47.0604	Automobile/Automotive Mechanics Technology/Technician.	1,539	1,528	1,664	1,682	1,614	1,653	-68	-4.0%	75	4.9%
47.0605	Diesel Mechanics Technology/Technician.	58	88	58	54	102	71	48	88.9%	44	75.9%
47.0606	Small Engine Mechanics and Repair Technology/Technician.	71	25	37	22	43	34	21	95.5%	-28	-39.4%
47.0609	Avionics Maintenance Technology/Technician	15	36	0	0	0	0	0	--	-15	-100.0%
47.9994	Career Exploration.	0	0	0	0	28	9	28	--	28	--
47.9996	Certification/Licensure Review.	0	1	0	0	1	0	1	--	1	--
47.9997	Topics.	24	16	36	0	31	22	31	--	7	29.2%
47.9999	Mechanic and Repair Technologies/Technicians, Other.	0	21	21	1	0	7	-1	-100.0%	0	--
48.0501	Machine Tool Technology/Machinist.	32	54	71	87	77	78	-10	-11.5%	45	140.6%
48.0503	Machine Shop Technology/Assistant.	668	835	708	606	708	674	102	16.8%	40	6.0%
48.0506	Sheet Metal Technology/Sheetworking.	0	0	0	0	1	0	1	--	1	--
48.0508	Welding Technology/Welder.	2,728	2,777	2,959	2,833	2,945	2,912	112	4.0%	217	8.0%
48.0510	Computer Numerically Controlled (CNC) Machinist Technology/CNC Machinist.	0	0	0	18	13	10	-5	-27.8%	13	--
48.0520	Numerical Control (NOT CNC) (Cross to 48.0599 for IPEDS)	38	43	47	32	33	37	1	3.1%	-5	-13.2%
48.0702	Furniture Design and Manufacturing	0	2	0	0	0	0	0	--	0	--
48.9995	Supervised Independent Study. (1.2 only)	8	0	11	0	0	4	0	--	-8	-100.0%
48.9997	Topics. (1.2 only)	8	8	12	19	14	15	-5	-26.3%	6	75.0%
49.0102	Airline/Commercial/Professional Pilot and Flight Crew.	11	9	12	8	8	9	0	0.0%	-3	-27.3%





Illinois Community College Board  
Table B-13  
STATEWIDE DUAL CREDIT COURSE ENROLLMENT BY 6-DIGIT CIP  
FOR FISCAL YEARS 2015-2019

CIP	COURSE NAME	2015	2016	2017	2018	2019	FY 2017-2019 3-Year Average	FY 2018-2019 1-Year Difference		FY 2015-2019 5-Year Difference	
							Number	Number	Percent	Number	Percent
50.0101	Visual and Performing Arts, General.	11	25	17	11	21	16	10	90.9%	10	90.9%
50.0201	Crafts/Craft Design, Folk Art and Artisanry	0	0	6	0	0	2	0	--	0	--
50.0301	Dance, General.	1	0	0	0	7	2	7	--	6	600.0%
50.0302	Ballet.	1	0	0	0	7	2	7	--	6	600.0%
50.0401	Design and Visual Communications, General.	307	459	458	587	504	516	-83	-14.1%	197	64.2%
50.0402	Commercial and Advertising Art.	0	0	8	2	0	3	-2	-100.0%	0	--
50.0406	Commercial Photography.	522	641	939	1,011	912	954	-99	-9.8%	390	74.7%
50.0409	Graphic Design.	0	1	0	1	2	1	1	100.0%	2	--
50.0501	Drama and Dramatics/Theatre Arts, General.	103	99	157	170	113	147	-57	-33.5%	10	9.7%
50.0502	Technical Theatre/Theatre Design and Technology	1	1	1	0	0	0	0	--	-1	-100.0%
50.0506	Acting.	9	49	25	46	20	30	-26	-56.5%	11	122.2%
50.0599	Dramatic/Theatre Arts and Stagecraft, Other	1	0	3	0	0	1	0	--	-1	-100.0%
50.0601	Film/Cinema/Video Studies.	5	12	6	30	20	19	-10	-33.3%	15	300.0%
50.0602	Cinematography and Film/Video Production.	165	176	145	168	166	160	-2	-1.2%	1	0.6%
50.0605	Photography.	8	13	184	118	221	174	103	87.3%	213	2662.5%
50.0701	Art/Art Studies, General.	289	442	472	453	451	459	-2	-0.4%	162	56.1%
50.0703	Art History, Criticism and Conservation.	164	141	101	154	105	120	-49	-31.8%	-59	-36.0%
50.0705	Drawing.	49	21	29	46	99	58	53	115.2%	50	102.0%
50.0708	Painting.	0	0	1	4	2	2	-2	-50.0%	2	--
50.0709	Sculpture.	0	1	0	1	0	0	-1	-100.0%	0	--
50.0711	Ceramic Arts and Ceramics.	1	10	62	39	26	42	-13	-33.3%	25	2500.0%
50.0901	Music, General	3	5	5	0	0	2	0	--	-3	-100.0%
50.0902	Music History, Literature, and Theory.	645	770	984	1,124	1,250	1,119	126	11.2%	605	93.8%
50.0903	Music Performance, General.	150	154	205	134	218	186	84	62.7%	68	45.3%
50.0904	Music Theory and Composition.	56	56	87	48	59	65	11	22.9%	3	5.4%
50.0910	Jazz/Jazz Studies.	0	0	0	0	3	1	3	--	3	--
50.0913	Music Technology.	0	0	0	0	2	1	2	--	2	--
50.9997	Topics.	8	21	23	0	0	8	0	--	-8	-100.0%
51.0000	Health Services/Allied Health/Health Sciences, General.	316	424	397	680	1,184	754	504	74.1%	868	274.7%
51.0001	Health and Wellness, General.	0	0	9	9	12	10	3	33.3%	12	--
51.0707	Health Information/Medical Records Technology/Technician.	476	446	367	404	404	392	0	0.0%	-72	-15.1%
51.0708	Medical Transcription/Transcriptionist.	43	60	97	107	128	111	21	19.6%	85	197.7%
51.0710	Medical Office Assistant/Specialist.	1,297	1,423	1,692	2,027	2,269	1,996	242	11.9%	972	74.9%
51.0801	Medical/Clinical Assistant.	43	60	68	52	65	62	13	25.0%	22	51.2%
51.0805	Pharmacy Technician/Assistant.	4	2	0	0	0	0	0	--	-4	-100.0%
51.0808	Veterinary/Animal Health Technology/Technician and Veterinary Assistant.	0	0	71	72	84	76	12	16.7%	84	--
51.0810	Emergency Care Attendant (EMT Ambulance).	269	229	211	205	0	139	-205	-100.0%	-269	-100.0%
51.0902	Electrocardiograph Technology/Technician	0	0	1	0	0	0	0	--	0	--
51.0904	Emergency Medical Technology/Technician (EMT Paramedic).	182	217	323	452	348	374	-104	-23.0%	166	91.2%
51.0907	Medical Radiologic Technology/Science - Radiation Therapist.	0	1	0	1	4	2	3	300.0%	4	--
51.0908	Respiratory Care Therapy/Therapist.	26	40	58	150	21	76	-129	-86.0%	-5	-19.2%
51.0913	Athletic Training/Trainer.	1	2	0	11	0	4	-11	-100.0%	-1	-100.0%
51.1004	Clinical/Medical Laboratory Technician.	2	1	17	31	2	17	-29	-93.5%	0	0.0%
51.2201	Public Health, General.	47	6	1	0	75	25	75	--	28	59.6%
51.3104	Dietitian Assistant.	36	35	26	29	22	26	-7	-24.1%	-14	-38.9%
51.3501	Massage Therapy/Therapeutic Massage.	0	0	0	14	14	9	0	0.0%	14	--
51.3801	Registered Nursing/Registered Nurse.	43	0	0	1	0	0	-1	-100.0%	-43	-100.0%
51.3812	Perioperative/Operating Room and Surgical Nurse/Nursing.	0	1	0	0	0	0	0	--	0	--
51.3901	Licensed Practical/Vocational Nurse Training.	12	11	20	16	28	21	12	75.0%	16	133.3%
51.3902	Nursing Assistant/Aide and Patient Care Assistant/Aide.	2,264	2,301	2,678	2,697	2,730	2,702	33	1.2%	466	20.6%
51.9994	Career Exploration.	326	385	410	592	405	469	-187	-31.6%	79	24.2%
51.9995	Supervised Independent Study.	0	10	0	0	0	0	0	--	0	--
51.9997	Topics. (1.2 only)	0	23	23	49	38	37	-11	-22.4%	38	--
51.9998	Internships. (1.2 only)	6	6	13	2	10	8	8	400.0%	4	66.7%
51.9999	Health Professions and Related Clinical Sciences, Other.	372	354	375	387	363	375	-24	-6.2%	-9	-2.4%
52.0101	Business/Commerce, General.	657	765	811	875	1,496	1,061	621	71.0%	839	127.7%
52.0201	Business Administration and Management, General.	62	82	96	127	151	125	24	18.9%	89	143.5%



Illinois Community College Board  
Table B-13  
STATEWIDE DUAL CREDIT COURSE ENROLLMENT BY 6-DIGIT CIP  
FOR FISCAL YEARS 2015-2019

CIP	COURSE NAME	2015	2016	2017	2018	2019	FY 2017-2019 3-Year Average	FY 2018-2019		FY 2015-2019	
							Number	Number	Percent	Number	Percent
52.0203	Logistics, Materials, and Supply Chain Management	0	0	23	0	0	8	0	--	0	--
52.0301	Accounting.	502	390	316	225	289	277	64	28.4%	-213	-42.4%
52.0302	Accounting Technology/Technician and Bookkeeping.	652	771	693	840	723	752	-117	-13.9%	71	10.9%
52.0401	Administrative Assistant and Secretarial Science, General.	1,391	1,193	1,204	1,009	1,111	1,108	102	10.1%	-280	-20.1%
52.0407	Business/Office Automation/Technology/Data Entry.	2,686	2,475	2,500	2,091	2,525	2,372	434	20.8%	-161	-6.0%
52.0408	General Office Occupations and Clerical Services.	2,172	2,481	1,923	2,038	2,113	2,025	75	3.7%	-59	-2.7%
52.0409	Parts, Warehousing, and Inventory Management Operations	31	3	0	0	0	0	0	--	-31	-100.0%
52.0411	Customer Service Support/Call Center/Teleservice Operation.	3	24	11	25	10	15	-15	-60.0%	7	233.3%
52.0701	Entrepreneurship/Entrepreneurial Studies.	345	506	775	988	1,146	970	158	16.0%	801	232.2%
52.0703	Small Business Administration/Management.	47	86	115	140	140	132	0	0.0%	93	197.9%
52.0801	Finance, General.	54	32	32	0	18	17	18	--	-36	-66.7%
52.0803	Banking and Financial Support Services.	14	1	22	99	126	82	27	27.3%	112	800.0%
52.0807	Investments and Securities.	5	15	5	0	32	12	32	--	27	540.0%
52.0903	Tourism and Travel Services Management.	0	0	0	9	6	5	-3	-33.3%	6	--
52.0904	Hotel/Motel Administration/Management	0	0	20	21	12	18	-9	-42.9%	12	--
52.0905	Restaurant/Food Services Management	34	21	0	0	0	0	0	--	-34	-100.0%
52.1001	Human Resources Management/Personnel Administration, General.	0	1	0	0	4	1	4	--	4	--
52.1002	Labor and Industrial Relations.	0	0	0	0	1	0	1	--	1	--
52.1003	Organizational Behavior Studies.	7	28	1	20	19	13	-1	-5.0%	12	171.4%
52.1101	International Business/Trade/Commerce.	2	9	9	1	1	4	0	0.0%	-1	-50.0%
52.1401	Marketing/Marketing Management, General.	175	229	331	522	547	467	25	4.8%	372	212.6%
52.1402	Marketing Research.	15	19	27	20	18	22	-2	-10.0%	3	20.0%
52.1803	Retailing and Retail Operations.	0	17	0	0	0	0	0	--	0	--
52.1804	Selling Skills and Sales Operations.	3	18	7	31	21	20	-10	-32.3%	18	600.0%
52.1902	Fashion Merchandising.	38	66	61	62	38	54	-24	-38.7%	0	0.0%
52.1909	Special Products Marketing Operations	0	0	1	0	0	0	0	--	0	--
52.2001	Construction Management	0	1	0	0	0	0	0	--	0	--
52.9994	Career Exploration.	289	168	229	295	291	272	-4	-1.4%	2	0.7%
52.9995	Supervised Independent Study. (1.2 only)	0	0	1	0	0	0	0	--	0	--
52.9996	Certification/Licensure Review.	0	0	16	10	0	9	-10	-100.0%	0	--
52.9997	Topics.	10	55	78	116	81	92	-35	-30.2%	71	710.0%
52.9998	Internships.	19	10	17	19	6	14	-13	-68.4%	-13	-68.4%
52.9999	Business, Management, Marketing, and Related Support Services, Other.	4	5	2	2	6	3	4	200.0%	2	50.0%
54.0101	History, General.	799	729	702	850	739	764	-111	-13.1%	-60	-7.5%
54.0102	American History (United States).	2,952	3,409	3,860	4,386	4,002	4,083	-384	-8.8%	1,050	35.6%
54.0103	European History.	0	1	0	1	0	0	-1	-100.0%	0	--
54.0106	Asian History.	9	15	33	55	69	52	14	25.5%	60	666.7%
54.0196	History of Eastern Civilizations	0	0	0	0	1	0	1	--	1	--
54.9996	Certification/Licensure Review.	51	71	25	77	45	49	-32	-41.6%	-6	-11.8%
TOTALS		99,343	105,361	111,643	117,672	124,614	117,976	6,942	5.9%	25,271	25.4%
Pure											
Minimum		0	0	0	0	0	0	-471	-100.0%	-658	-100.0%
Maximum		15,575	16,671	17,278	19,082	19,798	18,719	716	9300.0%	4,223	5400.0%
Median		19	22	24	26	29	27	0	1.2%	2	5.7%
Standard Deviation		991	1,059	1,105	1,186	1,239	1,175	111	590.6%	312	535.4%
Average		261	277	293	309	327	310	18	68.5%	66	133.6%

Includes only Transfer courses and Career and Technical Education courses  
SOURCE OF DATA: ICCB Centralized Data System--Annual Course (AC) Data





Illinois Community College Board  
Table B-14  
STATEWIDE DUAL CREDIT COURSE ENROLLMENT BY 2-DIGIT CIP  
FOR FISCAL YEARS 2015-2019

CIP	COURSE NAME	2015	2016	2017	2018*	2019*	FY 2017-2019	FY 2018-2019		FY 2015-2019	
							3-Year Average	1-Year Difference	Percent	5-Year Difference	Percent
							Number	Number		Number	Percent
01.	Agriculture, Agriculture Operations, and Related Sciences	1,549	1,483	1,642	1,696	1,609	1,649	-87	-5.1%	60	3.9%
03.	Natural Resources and Conservation	25	22	14	38	52	35	14	36.8%	27	108.0%
04.	Architecture and Related Services	8	20	34	38	5	26	-33	-86.8%	-3	-37.5%
05.	Area, Ethnic, Cultural, Gender, and Group Studies	101	37	51	174	178	134	4	2.3%	77	76.2%
09.	Communication, Journalism and Related Programs	515	387	600	431	619	550	188	43.6%	104	20.2%
10.	Communications, Technologies/Technicians and Support Services	1,005	931	1,021	1,091	1,298	1,137	207	19.0%	293	29.2%
11.	Computer and Information Sciences and Support Services	5,624	6,184	6,413	6,028	6,319	6,253	291	4.8%	695	12.4%
12.	Personal and Culinary Services	2,088	2,285	2,536	2,686	3,230	2,817	544	20.3%	1,142	54.7%
13.	Education	1,065	1,358	1,284	1,435	1,024	1,248	-411	-28.6%	-41	-3.8%
14.	Engineering	55	70	54	119	28	67	-91	-76.5%	-27	-49.1%
15.	Engineering Technologies and Engineering-Related Fields	3,044	3,164	3,508	3,412	5,024	3,981	1,612	47.2%	1,980	65.0%
16.	Foreign Languages, Literatures, and Linguistics	5,253	5,491	5,698	5,582	6,211	5,830	629	11.3%	958	18.2%
19.	Family and Consumer Sciences/Human Sciences	1,224	1,255	1,691	2,016	2,609	2,105	593	29.4%	1,385	113.2%
22.	Legal Professions and Studies	0	2	2	2	3	2	1	50.0%	3	--
23.	English Language and Literature/Letters	19,905	21,478	22,326	24,605	25,582	24,171	977	4.0%	5,677	28.5%
24.	Liberal Arts and Sciences, General Studies and Humanities	2,377	2,545	2,527	2,682	2,730	2,646	48	1.8%	353	14.9%
26.	Biological and Biomedical Sciences	3,541	4,142	4,781	4,492	4,711	4,661	219	4.9%	1,170	33.0%
27.	Mathematics and Statistics	8,099	9,528	9,873	10,578	11,567	10,673	989	9.3%	3,468	42.8%
30.	Multi/Interdisciplinary Studies	59	77	113	107	101	107	-6	-5.6%	42	71.2%
31.	Parks, Recreation, Leisure and Fitness Studies	2,389	2,463	2,891	2,369	2,212	2,491	-157	-6.6%	-177	-7.4%
32.	Basic Skills and Developmental/Remedial Education	0	0	16	64	68	49	4	6.3%	68	--
36.	Leisure and Recreational Activities	0	0	0	13	16	10	3	23.1%	16	--
38.	Philosophy and Religious Studies	488	744	832	908	981	907	73	8.0%	493	101.0%
40.	Physical Sciences	2,304	2,536	2,422	2,074	2,233	2,243	159	7.7%	-71	-3.1%
42.	Psychology	4,278	3,568	3,875	4,168	4,112	4,052	-56	-1.3%	-166	-3.9%
43.	Homeland Security, Law Enforcement, Firefighting and Related Protective Services	2,298	2,453	2,292	2,940	2,955	2,729	15	0.5%	657	28.6%
44.	Public Administration and Social Services Professions	1	0	1	53	55	36	2	3.8%	54	5400.0%
45.	Social Sciences	3,968	3,372	3,134	3,954	3,783	3,624	-171	-4.3%	-185	-4.7%
46.	Construction Trades	551	586	721	681	683	695	2	0.3%	132	24.0%
47.	Mechanics and Repair Technologies/Technicians	2,729	2,604	2,735	2,544	2,616	2,632	72	2.8%	-113	-4.1%
48.	Precision Production	3,482	3,719	3,808	3,595	3,791	3,731	196	5.5%	309	8.9%
49.	Transportation and Materials Moving	26	27	27	8	8	14	0	0.0%	-18	-69.2%
50.	Visual and Performing Arts	2,499	3,097	3,918	4,147	4,208	4,091	61	1.5%	1,709	68.4%
51.	Health Professions and Related Programs	5,765	6,037	6,857	7,988	8,206	7,684	218	2.7%	2,441	42.3%
52.	Business Management, Marketing, and Related Supportive Services	9,217	9,471	9,326	9,585	10,931	9,947	1,346	14.0%	1,714	18.6%
54.	History	<u>3,811</u>	<u>4,225</u>	<u>4,620</u>	<u>5,369</u>	<u>4,856</u>	<u>4,948</u>	<u>-513</u>	<u>-9.6%</u>	<u>1,045</u>	<u>27.4%</u>
TOTALS		99,343	105,361	111,643	117,672	124,614	117,976	6,942	5.9%	25,271	25.4%
Pure											
Minimum		0	0	0	2	3	2	-513	-86.8%	-185	-69.2%
Maximum		19,905	21,478	22,326	24,605	25,582	24,171	1,612	50.0%	5,677	5400.0%
Median		2,193	2,369	2,357	2,222	2,421	2,367	32	3.9%	118	24.0%
Standard Deviation		3,759	4,054	4,202	4,569	4,822	4,526	444	26.6%	1,201	936.4%
Average		2,760	2,927	3,101	3,269	3,462	3,277	193	3.8%	702	188.7%

\*Aircraft Pilot (Private) moved from 490107 CIP to 360119 CIP to align with reporting in Table B-13.

Includes only Transfer courses and Career and Technical Education courses

SOURCE OF DATA: ICCB Centralized Data System--Annual Course (AC) Data



Illinois Community College Board  
Table B-15  
STATEWIDE DUAL CREDIT COURSE ENROLLMENT BY CAREER CLUSTER  
FOR FISCAL YEARS 2015-2019

Career Clusters Code Title	2015	2016	2017	2018	2019*	FY 2017-2019 3-Year Average	FY 2018-2019 1-Year Difference		FY 2015-2019 5-Year Difference	
						Number	Number	Percent	Number	Percent
01 Agriculture, Food & Natural Resources	1,480	1,457	1,581	1,664	1,630	1,625	-34	-2.0%	150	10.1%
02 Architecture & Construction	659	710	860	870	3,664	1,798	2,794	321.1%	3,005	456.0%
03 Arts, Audio/Video Technology & Communications	23,184	24,898	26,858	29,090	30,618	28,855	1,528	5.3%	7,434	32.1%
04 Business Management & Administration	7,712	8,039	7,909	7,682	9,745	8,445	2,063	26.9%	2,033	26.4%
05 Education & Training	11,364	12,512	13,487	14,045	14,722	14,085	677	4.8%	3,358	29.5%
06 Finance	1,227	1,209	1,068	1,164	176	803	-988	-84.9%	-1,051	-85.7%
07 Government & Public Administration	2,081	1,332	1,394	1,535	1,216	1,382	-319	-20.8%	-865	-41.6%
08 Health Science	4,843	4,959	5,779	6,370	11,556	7,902	5,186	81.4%	6,713	138.6%
09 Hospitality & Tourism	767	951	1,337	1,571	2,213	1,707	642	40.9%	1,446	188.5%
10 Human Services	6,148	5,382	5,564	5,992	4,828	5,461	-1,164	-19.4%	-1,320	-21.5%
11 Information Technology	5,228	5,698	5,853	5,599	6,180	5,877	581	10.4%	952	18.2%
12 Law, Public Safety, Corrections & Security	2,121	2,325	2,170	2,842	2,831	2,614	-11	-0.4%	710	33.5%
13 Manufacturing	6,630	6,934	7,411	6,767	5,989	6,722	-778	-11.5%	-641	-9.7%
14 Marketing	247	349	452	636	624	571	-12	-1.9%	377	152.6%
15 Science, Technology, Engineering & Mathematics	20,070	22,840	23,880	25,371	24,941	24,731	-430	-1.7%	4,871	24.3%
16 Transportation, Distribution & Logistics	2,112	1,983	2,039	2,035	1,933	2,002	-102	-5.0%	-179	-8.5%
17 Unknown	3,470	3,783	4,001	4,439	1,748	3,396	-2,691	-60.6%	-1,722	-49.6%
TOTALS	99,343	105,361	111,643	117,672	124,614	117,976	6,942	5.9%	25,271	25.4%
Pure										
Minimum	247	349	452	636	176	571	-2,691	-84.9%	-1,722	-85.7%
Maximum	23,184	24,898	26,858	29,090	30,618	28,855	5,186	321.1%	7,434	456.0%
Median	3,470	3,783	4,001	4,439	3,664	3,396	-12	-1.7%	710	24.3%
Standard Deviation	6,666.3	7,392.6	7,864.5	8,393.9	8,754.9	8,296.3	1,770.3	86.4%	2,756.8	126.5%
Average	5,844	6,198	6,567	6,922	7,330	6,940	408	16.6%	1,487	52.6%

\*The CIP cluster crosswalk has been updated in FY 2019.

Includes only Transfer courses and Career and Technical Education courses

The Career Cluster brand is a registered trademark of Advance CTE

SOURCE OF DATA: ICCB Centralized Data System--Annual Course (AC) Data

Illinois Community College Board  
Table B-16  
DUAL CREDIT COURSE ENROLLMENT BY INSTRUCTIONAL SITE AND BY COLLEGE  
FISCAL YEAR 2019



Dist. No. District/College	Main College Campus	High School Campus	Off Campus College Facility	Online/ Internet	Distance Learning	Other/ Unknown Location	Total
503 Black Hawk	36	2,669	233	436	0	8	3,382
518 Carl Sandburg	177	1,055	126	520	0	0	1,878
508 City Colleges of Chicago	(12)	(0)	(5,511)	(0)	(0)	(1,612)	(7,135)
02 Harold Washington	0	0	648	0	0	678	1,326
04 Harry S Truman	12	0	181	0	0	177	370
01 Kennedy-King	0	0	665	0	0	71	736
03 Malcolm X	0	0	692	0	0	26	718
05 Olive-Harvey	0	0	243	0	0	651	894
06 Richard J. Daley	0	0	1,718	0	0	7	1,725
07 Wilbur Wright	0	0	1,364	0	0	2	1,366
502 College of DuPage	0	6,053	1,857	0	0	121	8,031
532 College of Lake County	13	1,433	172	22	0	267	1,907
507 Danville Area	1,921	671	118	0	0	25	2,735
509 Elgin	1,686	27	44	25	0	48	1,830
512 Harper	317	5,115	0	0	0	0	5,432
540 Heartland	66	2,728	0	214	5	0	3,013
519 Highland	226	845	0	0	0	282	1,353
514 Illinois Central	336	4,334	0	0	0	630	5,300
529 Illinois Eastern	(153)	(3,880)	(4)	(136)	(0)	(134)	(4,307)
04 Frontier	74	1,729	0	136	0	115	2,054
01 Lincoln Trail	2	753	0	0	0	0	755
02 Olney Central	14	701	0	0	0	0	715
03 Wabash Valley	63	697	4	0	0	19	783
513 Illinois Valley	0	1,695	0	51	0	0	1,746
530 John A. Logan	94	1,737	256	1	0	0	2,088
539 John Wood	0	574	10	0	0	5	589
525 Joliet Junior	0	7,233	0	0	0	0	7,233
520 Kankakee	0	0	0	0	0	805	805
501 Kaskaskia	95	4,670	130	0	0	0	4,895
523 Kishwaukee	541	533	0	0	0	123	1,197
517 Lake Land	0	3,715	95	16	0	0	3,826
536 Lewis and Clark	0	8,842	0	0	0	0	8,842
526 Lincoln Land	0	2,817	0	0	0	200	3,017
528 McHenry County	177	2,631	0	0	0	0	2,808
524 Moraine Valley	0	4,610	0	0	0	0	4,610
527 Morton	0	1,150	0	0	0	0	1,150
535 Oakton	0	2,272	0	0	0	42	2,314
505 Parkland	164	1,870	214	328	0	0	2,576
515 Prairie State	0	763	0	0	0	0	763
521 Rend Lake	252	2,654	230	78	0	5	3,219
537 Richland	770	1,028	179	28	0	0	2,005
511 Rock Valley	2,932	80	13	83	3	0	3,111
506 Sauk Valley	350	1,111	0	181	0	0	1,642
531 Shawnee	0	988	0	0	0	0	988
510 South Suburban	0	2,506	0	0	0	0	2,506
533 Southeastern Illinois	98	905	0	370	36	35	1,444
522 Southwestern Illinois	3,386	3,951	282	44	1	45	7,709
534 Spoon River	67	229	124	206	10	101	737
504 Triton	170	1,950	0	7	0	0	2,127
516 Waubesa	211	3,078	1,012	0	0	63	4,364
TOTALS	14,250	92,402	10,610	2,746	55	4,551	124,614

SOURCE OF DATA: ICCB Centralized Data System--Annual Course (AC) Data