



**DUAL CREDIT IN THE
ILLINOIS COMMUNITY
COLLEGE SYSTEM
FISCAL YEAR 2017**

March 2018

Compiled by ICCB Research and Policy Studies
Nathan R. Wilson, Associate Deputy Director
Jay Brooks, Director
Michelle Dufour, Associate Director
Jana Ferguson, Associate Director

TABLE OF CONTENTS

Introduction.....	4
Dual Credit Definition and Illinois Legislative Background	4
Characteristics of Dual Credit Students (unduplicated).....	5
<i>OVERALL HEADCOUNT</i>	<i>5</i>
<i>GENDER AND RACIAL/ETHNICITY CHARACTERISTICS.....</i>	<i>6</i>
<i>CREDIT HOURS ENROLLED BY DUAL CREDIT STUDENTS.....</i>	<i>7</i>
<i>GEOGRAPHIC REGION.....</i>	<i>7</i>
Dual Credit Course Count and Enrollment (duplicated).....	8
<i>OVERALL COURSE COUNT AND ENROLLMENT</i>	<i>9</i>
<i>BACCALAUREATE/TRANSFER</i>	<i>10</i>
<i>CAREER AND TECHNICAL EDUCATION.....</i>	<i>11</i>
Matriculation of Dual Credit Students to Illinois Community Colleges	13
Bibliography	14
Appendix A, B, and C Table Listing	15
Appendix D Illinois Community Colleges by Geographic Regions.....	16

Suggested Citation:

Illinois Community College Board. (2018). *Fiscal Year 2017 Dual Credit in the Illinois Community College System*. Springfield, IL: Author.

INTRODUCTION

Dual credit instruction allows academically prepared high school students to simultaneously earn credits that count toward a high school diploma and a college degree. Dual credit instruction delivers a “win-win” arrangement for all parties: students gain access to challenging college-level coursework to make their junior and senior years of high school more productive; students can prove to others and themselves that they have the ability to succeed in college; college costs can be reduced for parents and students; time to degree at college can be shortened; and the enhanced high school and college faculty dialogue can contribute to a better alignment between secondary and postsecondary education. Consequently, as dual credit instruction has a positive impact on postsecondary completion, there is a growing emphasis among policy makers on the value of dual credit enrollment for all students and especially those who are traditionally underserved in higher education.

In Illinois, during fiscal year 2017, a total of 57,897 individual (i.e., “unduplicated”) high school students enrolled in one or more community college dual credit courses. Illinois community colleges offered a total of 10,994 dual credit courses in fiscal year 2017, which was an increase of 2.4 percent from the previous year (N = 10,740). One in ten students (10.5 percent) taking one or more Illinois community college credit courses was a high school student. Overall, in fiscal year 2017, dual credit duplicated enrollment (N = 111,643) increased 6.0 percent compared to one year ago (N = 105,361).

Data for this report derive from the Illinois Community College Board’s (ICCB) Centralized Data System and, specifically, the Annual Student Enrollment and Completion (A1) student-level submission (Appendix A and C Tables) and Annual Course Data (AC) student-level submission (Appendix B Tables) from Illinois community colleges. Information from the **A1 submission** is used in the report to describe the characteristics of high school students who enrolled in dual credit courses. A1 data are required for all students who are officially enrolled in a credit course at an Illinois community college any time during the specified fiscal year. A1 enrollments are **unduplicated** end of year counts. Duplicated enrollment and course data derive from ICCB **AC submissions**. AC enrollments are **duplicated** meaning students are counted for each course they enroll in (e.g., a student enrolling in three dual credit courses is counted as three enrollments). The AC record submission includes dual credit identifier information that is used to generate dual credit course counts, enrollments, and average class sizes. For Illinois community colleges, student-level data is collected by ICCB for each fiscal year. A fiscal year represents student activity in a July 1 through June 30 academic year.

DUAL CREDIT DEFINITION AND ILLINOIS LEGISLATIVE BACKGROUND

Dual credit is an instructional arrangement where an academically qualified high school student enrolls in a college-level course and, upon successful course completion, concurrently earns both

college credit and high school credit. Dual credit reflects strong and well established secondary-to-postsecondary articulation and alignment.

The Dual Credit Quality Act (Public Act 96-0194) was approved by the Governor on August 10, 2009 with an effective date of January 1, 2010. The Act requires the ICCB and the Board of Higher Education (IBHE) to develop policies regarding dual credit. Dual credit instructors teaching credit, college-level courses must meet the same requirements as on-campus faculty, and dual credit instructors teaching career and technical education courses must have appropriate credentials and teaching competencies. High school instructors must be provided with orientation, assessment methods, and administrative requirements before teaching dual credit courses, and they must be able to participate in all activities available to adjunct faculty. ([HIGHER EDUCATION \(110 ILCS 27/\) Dual Credit Quality Act.](#))

Dual credit course content is prescribed by Illinois Community Colleges in accordance with established course requirements. According to ICCB Administrative Rules: “Course prerequisites, descriptions, outlines, requirements, learning outcomes, and methods of evaluating students shall be the same as for on-campus offerings.” ([System Rules Manual of the Illinois Community College Board.](#))

There is currently no cap on the number of credit hours students may earn that is set in the Dual Credit Quality Act or ICCB Administrative Rules; however, the high school or the college may have their own limits.

CHARACTERISTICS OF DUAL CREDIT STUDENTS (UNDUPLICATED)

OVERALL HEADCOUNT

The Illinois Community College System recorded a total of 57,897 high school students enrolled in dual credit courses during fiscal year 2017. Currently, **all** Illinois community colleges offer dual credit courses. Appendix Table A-1 provides annual dual credit headcount enrollment in fiscal years 2013 through 2017 for each community college. Annual dual credit enrollments increased 5.5 percent compared to the previous year (N = 54,871) and 16.3 percent compared to five years ago (N = 49,763). Among Illinois’ 48 colleges, 17 colleges reported more than 1,000 dual credit enrollments in fiscal year 2017. College of DuPage reported the most dual credit enrollments (N = 5,387) followed by Lewis and Clark Community College (N = 4,046) and Harper College (N = 4,017).

Each of the 48 community colleges in Illinois provided dual credit courses in fiscal year 2017

High school students enrolled in dual credit courses comprised **10.5 percent of all credit enrollment** (N = 553,174) at Illinois community colleges in fiscal year 2017. Kaskaskia College reported the largest proportion of dual credit enrollment in comparison to the college’s total credit enrollment in fiscal year 2017 (43.1 percent) followed by Lewis and Clark Community

College (39.9 percent) and Sauk Valley Community College (24.6 percent) (Appendix Table A-2).

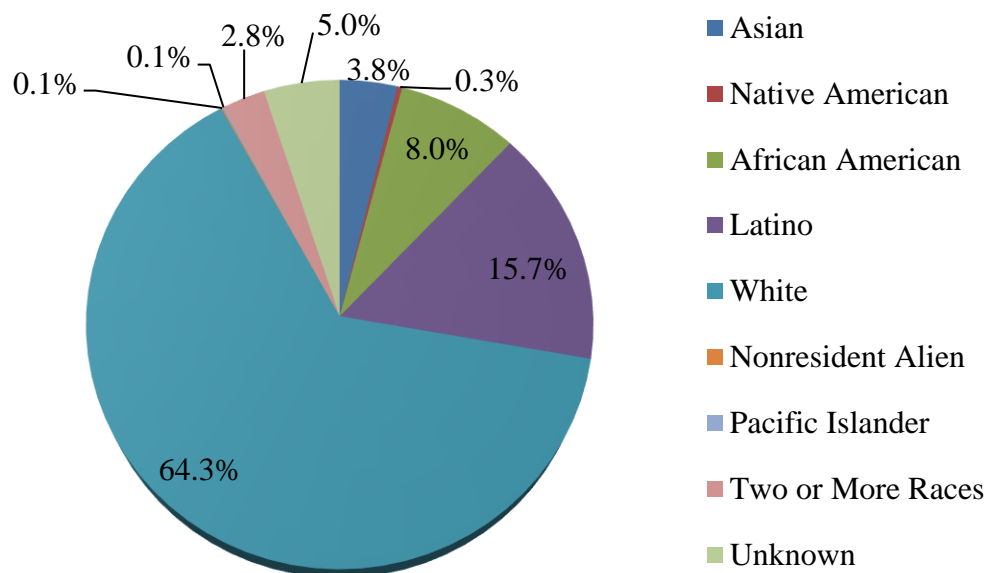
GENDER AND RACIAL/ETHNICITY CHARACTERISTICS

Overall, Table 1 shows nearly equal proportions of female (51.2 percent) and male (48.8 percent) high school students enrolled in community college courses in fiscal year 2017 (Appendix Table A-3).

Table 1 Dual Credit Enrollment by Gender Fiscal Year 2017		
	Number	Percent
Male	28,237	48.8%
Female	29,660	51.2%
Total	54,871	100.0%
Source of Data: ICCB Centralized Data System - Annual Enrollment and Completion (A1) Data		

Figure 1 depicts the race/ethnicity of high school students enrolling in community college dual credit courses in fiscal year 2017. In general, minority high school students were less likely to pursue dual credit than White students. Nearly two thirds of dual credit students were White (64.3 percent). Latino dual credit students accounted for 15.7 percent and African American students for 8.0 percent in fiscal year 2017. Asian (3.8 percent), Native American (0.3 percent), Nonresident Alien (0.1 percent), and Pacific Islander (0.1 percent) represented a small portion of dual credit students (Appendix Table A-4).

Figure 1. Race/Ethnicity of High School Students Taking Dual Credit Courses, Fiscal Year 2017

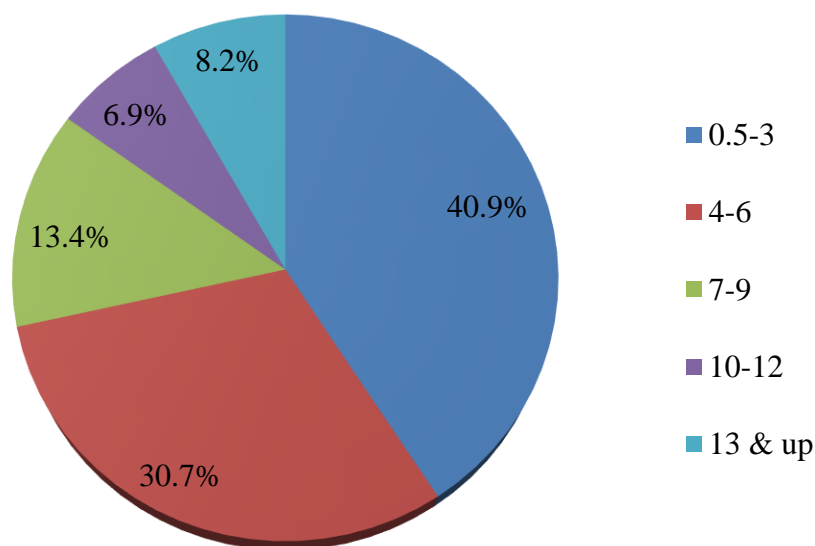


Source of Data: ICCB Centralized Data System - Annual Enrollment and Completion (A1) Data

CREDIT HOURS ENROLLED BY DUAL CREDIT STUDENTS

Of the 57,897 high school students that enrolled in dual credit coursework in fiscal year 2017, four out of ten students (40.9 percent) enrolled in college-level coursework of up to three credit hours, every other student enrolled in four to twelve credit hours (50.9 percent), and only about one out of ten students (8.2 percent) enrolled in more than 13 credit hours of college-level coursework in fiscal year 2017.

Figure 2. Percent of Dual Credit Headcount Enrollment by Number of Enrolled Hours, Fiscal Year 2017

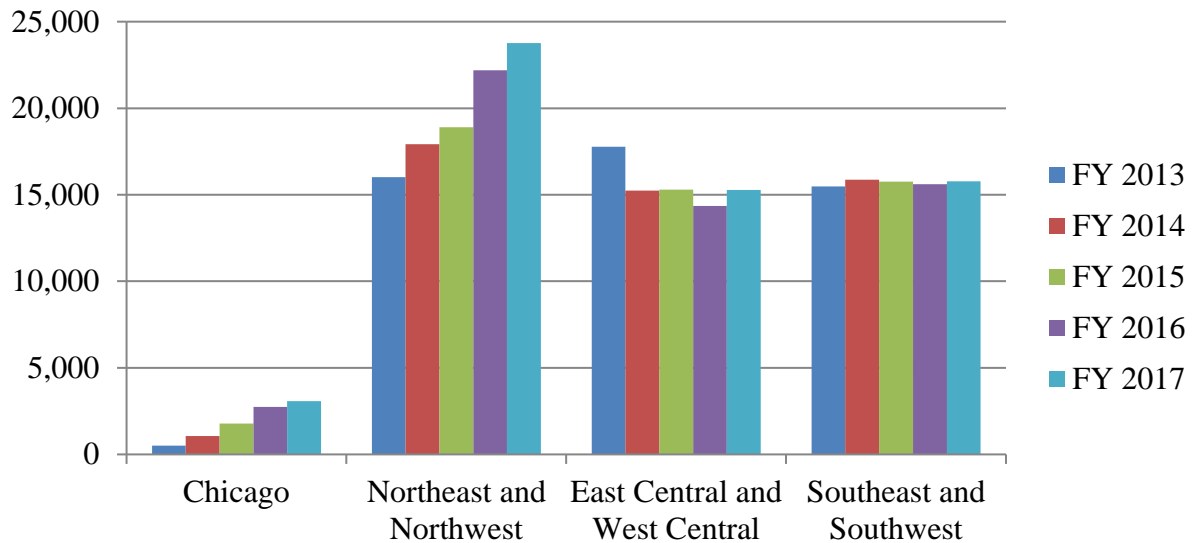


Source of Data: ICCB Centralized Data System - Annual Enrollment and Completion (A1) Data

GEOGRAPHIC REGION

In Figure 3, comparing dual credit enrollment counts regionally, Illinois community colleges in the Northeast/Northwest (N = 23,759) had the most dual credit students in fiscal year 2017 followed by Southeast/Southwest (N = 15,773), East Central/West Central (N = 15,282), and the City of Chicago (N = 3,083). From fiscal year 2013 to 2017, the largest increase in dual credit occurred in the City of Chicago (+ 517.8 percent) followed by Northeast/Northwest (+ 48.3 percent), and Southeast/Southwest (+ 1.9 percent) while East Central/West Central experienced a decrease in dual credit (-14.0 percent). The list of colleges in each geographic region is provided in Appendix D.

**Figure 3. Dual Credit Enrollment by Geographic Region
Fiscal Years 2013 - 2017**

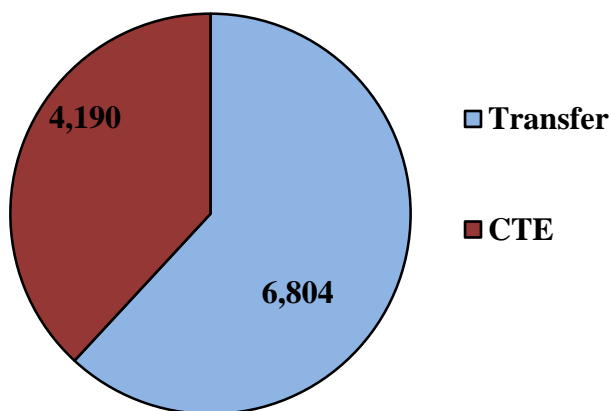


Source of Data: ICCB Centralized Data System - Annual Enrollment and Completion (A1) Data

DUAL CREDIT COURSE COUNT AND ENROLLMENT (DUPLICATED)

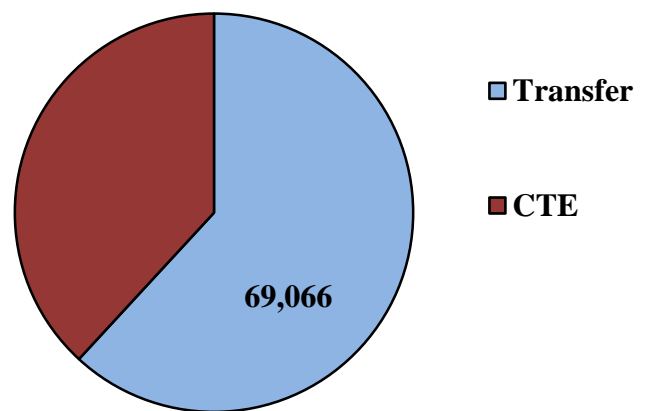
In the following portion of the report, dual credit course count and enrollment data are organized by broad programmatic area based on the Program Classification Structure (PCS). Figures 4 and 5 depict dual credit course count and enrollment in Transfer courses and Career and Technical Education (CTE) courses in fiscal year 2017.

**Figure 4. 2017 Dual Credit
Course Count**



Source of Data: ICCB Centralized Data System - Annual Course (AC) Data

**Figure 5. 2017 Dual Credit
Enrollment**



Source of Data: ICCB Centralized Data System - Annual Course (AC) Data

OVERALL COURSE COUNT AND ENROLLMENT

Illinois community colleges offered a total of 10,994 of dual credit courses (duplicated) in fiscal year 2017, which was an increase of 2.4 percent from the previous year (N=10,740). Dual credit courses accounted for 7.5 percent of all credit courses (N = 147,123) and 9.1 percent of all Transfer or Career and Technical Education courses in fiscal year 2017 (N = 120,350). Appendix Table B-1 provides dual credit course count in fiscal years 2015 through 2017 for each community college. Southwestern Illinois College reported most dual credit courses (N = 963), followed by Rock Valley College (N = 872) and Danville Area Community College (N = 631).

Duplicated dual credit course enrollments totaled 111,643 in fiscal year 2017, which was an increase of 6.0 percent compared to 2016 (N = 105,361). Among Illinois' community colleges, 28 colleges reported increases in dual credit enrollments while 17 colleges exhibited decreases in comparison to fiscal year 2016. Three colleges experienced little or no change (1.0 percent or less). Dual credit course enrollment accounted for 6.0 percent of all credit course enrollments (N = 1,859,218) and 6.9 percent of all Transfer or Career and Technical Education credit course enrollments (N = 1,613,997) in fiscal year 2017. Lewis and Clark Community College reported most duplicated dual credit enrollments (N = 9,103) in fiscal year 2017, followed by College of DuPage (N = 8,269) and Kaskaskia College (N = 6,717) (Appendix Table B-2).

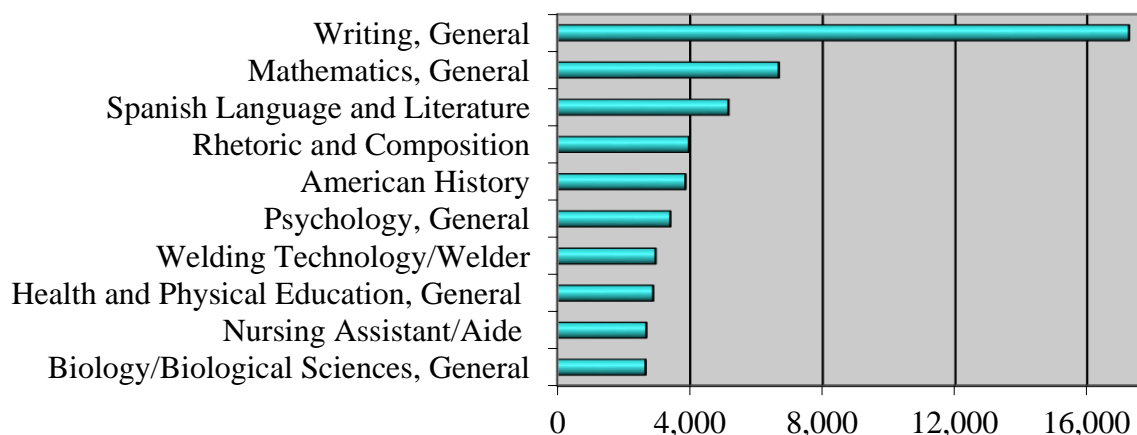
More than one hundred and eleven thousand enrollments occurred across dual credit courses in fiscal year 2017

As seen in Table 2, the average dual credit class size was 10.2 students per class in fiscal year 2017, a 3.5 percent increase from 2016 (N = 9.8). The average dual credit class size ranged from 20.4 students at McHenry County College to 2.0 students at Harold Washington College in fiscal year 2017 (Appendix Table B-3).

Table 2 Dual Credit Course Count, Enrollment (Duplicated), and Average Class Size Fiscal Years 2015-2017			
	2015	2016	2017
Number of Courses	9,986	10,740	10,994
Number of Enrollments	99,343	105,361	111,643
Average Class Size	9.9	9.8	10.2
Source of Data: ICCB Centralized Data System - Annual Course (AC) Data			

Enrollments in the ten largest programs accounted for 46.1 percent (N = 51,520) of all dual credit enrollments in fiscal year 2017. As depicted in Figure 6, the ten highest dual credit enrollments overall by Classification of Instructional Programs (CIP) code in academic year 2017 were in Writing, General, which was formerly reported under English Composition (N = 17,278); Mathematics, General (N = 6,674); Spanish Language and Literature (N = 5,157); Rhetoric and Composition, which was formerly reported under Speech and Rhetorical Studies (N = 3,967); American History (United States) (N = 3,860); Psychology, General (N = 3,404); Welding Technology/Welder (N = 2,959); Health and Physical Education, General (N = 2,887); Nursing Assistant/Aide and Patient Care Assistant/Aide (N = 2,678); and Biology/Biological Sciences, General (N = 2,656). All ten programs experienced increases from 2016. (Appendix Table B-4).

**Figure 6. Top Ten Dual Credit Course Enrollments
Fiscal Year 2017**



Source of Data: ICCB Centralized Data System - Annual Course (AC) Data

The five highest dual credit enrollments by program (2-digit CIP) in fiscal year 2017 were in English Language and Literature/Letters (N = 22,326); Mathematics and Statistics (N = 9,873); Business Management, Marketing, and Related Supportive Services (N = 9,326); Health Professions and Related Programs (N = 6,857); and Computer and Information Sciences and Support Services (N = 6,413) (Appendix Table B-14).

Appendix Table B-15 provides statewide dual credit enrollment by Career Cluster. The top five Career Clusters are Arts, Audio/Video Technology & Communications (N = 26,858); Science, Technology, Engineering & Mathematics (N = 23,880); Education & Training (N = 13,487); Business Management & Administration (N = 7,909); and Manufacturing (N = 7,411). The Career Cluster brand is a registered trademark of [Advance CTE](#).

TRANSFER COURSES

As Table 3 shows, Illinois community colleges offered 6,804 Transfer dual credit courses in fiscal year 2017 (Appendix Table B-5), which was 61.9 percent of all dual credit courses offered. This is a 0.4 percent increase compared to the previous year (N = 6,775). In fiscal year 2016, Transfer dual credit courses accounted for 63.1 percent of all dual credit courses. The average dual credit class size in Transfer education was 10.2 students in fiscal year 2017 (Appendix Table B-7).

Table 3 Transfer and CTE Dual Credit Course Count Fiscal Years 2015-2017			
	<u>2015</u>	<u>2016</u>	<u>2017</u>
Transfer	6,112	6,775	6,804
CTE	3,874	3,965	4,190
Total	9,986	10,740	10,994
Source of Data: ICCB Centralized Data System - Annual Course (AC) Data			

As seen in Table 4, Transfer dual credit enrollments (Appendix Table B-6) accounted for 61.9 percent of all dual credit enrollments in academic year 2017. Enrollments in this area increased to 69,066 in fiscal year 2017, an increase of 4.5 percent from 2016 (N = 66,118). Appendix Table B-8 shows the top five enrollments in Transfer courses: Writing, General (N = 17,258); Mathematics, General (N = 6,674); Spanish Language and Literature (N = 5,157); Rhetoric and Composition (N = 3,956); and American History (United States) (N = 3,860). Enrollments in these five courses accounted for 33.1 percent of all dual credit enrollments in fiscal year 2017.

Table 4 Dual Credit Enrollment (Duplicated) in Transfer and CTE Courses Fiscal Years 2015-2017			
	2015	2016	2017
Transfer	61,698	66,118	69,066
CTE	37,645	39,243	42,577
Total	99,343	105,361	111,643
Source of Data: ICCB Centralized Data System - Annual Course (AC) Data			

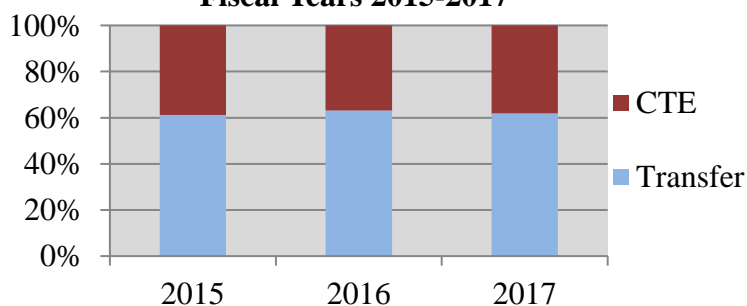
CAREER AND TECHNICAL EDUCATION COURSES

The Career and Technical Education dual credit course count was 4,190 in fiscal year 2017, which was 38.1 percent of all dual credit courses offered. This is an increase of 5.7 percent from 2016 (N = 3,965) (Appendix Table B-9). The average dual credit class size in this area was 10.2 students in fiscal year 2017 (Appendix Table B-11).

Dual credit enrollments in Career and Technical Education increased to 42,577 in fiscal year 2017, which is an 8.5 percent increase over 2016 (N = 39,243). Appendix Table B-12 shows that the highest enrollments in this area were in Welding Technology/Welder (N = 2,959); Nurse/Nursing Assistant/Aide and Patient Care Assistant (N = 2,678); Business/Office Automation/Technology/Data Entry (N = 2,500); General Office Occupations and Clerical Services (N = 1,923); and Computer Programming/Programmer, General (N = 1,797). Enrollments in these five courses accounted for 10.6 percent of all dual credit enrollments in fiscal year 2017.

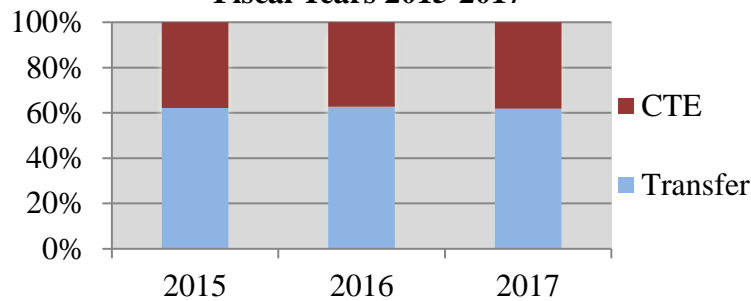
Figures 7 and 8 depict the proportion of Transfer and Career and Technical Education dual credit course counts and enrollments in fiscal years 2015 through 2017.

**Figure 7. Dual Credit Course Count
Fiscal Years 2015-2017**



Source of Data: ICCB Centralized Data System - Annual Course (AC) Data

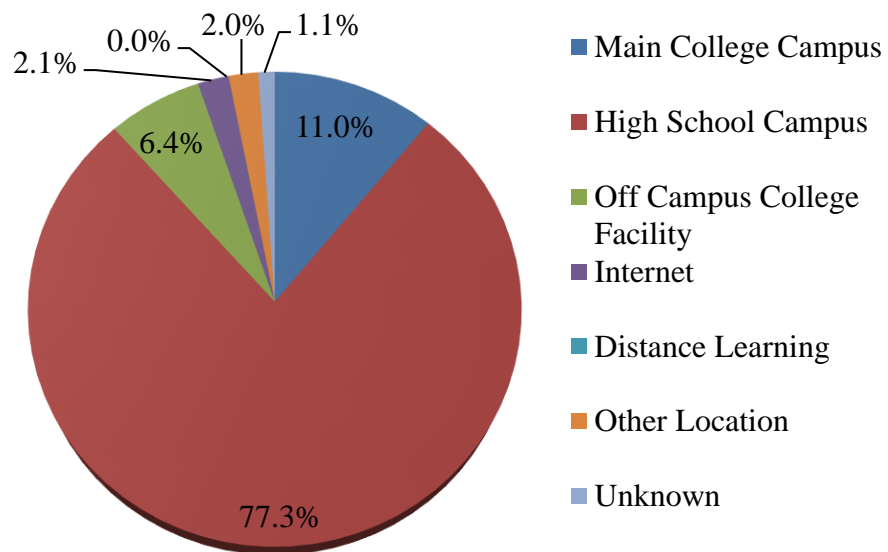
**Figure 8. Dual Credit Enrollment
Fiscal Years 2015-2017**



Source of Data: ICCB Centralized Data System - Annual Course (AC) Data

In fiscal year 2017, every three out of four high school dual credit students (77.3 percent) enrolled in dual credit courses at the high school campus. About one out of six high school dual credit students attended a main college campus (11.0 percent) or an off campus college facility (6.4 percent). The remaining 5.3 percent of dual credit students either chose online/distance education classes (2.1 percent), or some other/unknown location (3.1 percent) to enroll in dual credit courses.

**Figure 9. Dual Credit Enrollment by Instructional Site
Fiscal Year 2017**

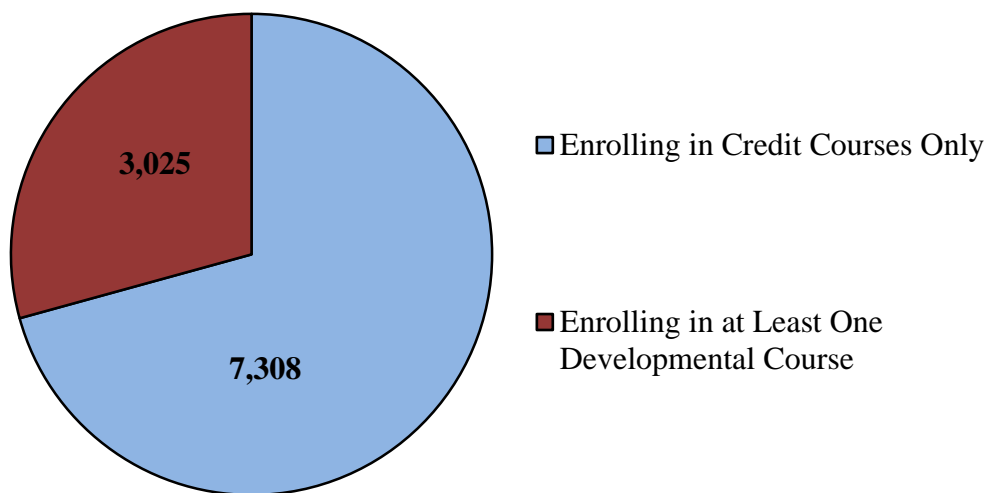


Source of Data: ICCB Centralized Data System - Annual Course (AC) Data

MATRICULATION OF DUAL CREDIT STUDENTS TO ILLINOIS COMMUNITY COLLEGES

Of 44,957 high school seniors who had enrolled in the dual credit coursework in fiscal year 2016, nearly one in four students (23.0 percent) entered the same community college in fiscal year 2017 that they had attended as dual credit students. More than two-thirds of the entering students (N = 10,333) enrolled in credit courses (70.7 percent) while the remaining students enrolled in developmental courses (29.3 percent). Comparative data inclusive of all first-time Illinois community college students (both prior dual credit and non-dual credit students) show approximately 50 percent enrolling in a developmental education course at entry ([ICCB Complete College America Web Portal](#)). Taking dual credit courses reduces the need for developmental education and accelerates the time to degree for students.

Figure 10. Fiscal Year 2016 Dual Credit Students Enrolling in the Same Community College in Fiscal Year 2017



Source of Data: ICCB Centralized Data System - Annual Enrollment and Completion (A1) Data

The largest proportion of dual credit seniors enrolling in the same institution in fiscal year 2017 was reported by Elgin Community College (60.3 percent), followed by Olney Central College (49.7 percent) and Shawnee Community College (46.0 percent). (Appendix Table C-1).

BIBLIOGRAPHY

- Advance CTE: State Leaders Connecting Learning to Work. (2018). Career Clusters. Silver Spring, Maryland. <https://careertech.org/career-clusters>
- Illinois 96th General Assembly. (2009). Higher Education (110 ILCS 27/) Dual Credit Quality Act. Springfield, IL: Illinois General Assembly. <http://www.ilga.gov/legislation/ilcs/ilcs3.asp?ActID=3117&ChapterID=18>
- Illinois Community College Board. (January 2018). Administrative Rules of the Illinois Community College Board. Springfield, IL: Illinois Community College Board. https://www.iccb.org/iccb/wp-content/pdfs/manuals/ICCB_SystemRules_Manual.pdf
- Illinois Community College Board. (October 2017). Dual Credit in the Illinois Community College System. Springfield, IL: Illinois Community College Board. https://www.iccb.org/iccb/wp-content/pdfs/reports/2016_DualCredit_Report.pdf
- Illinois Community College Board. (2018). Complete College America Web Portal, IL: Illinois Community College Board. <http://iccbdbsrv.iccb.org/ccaportal2011/home.cfm> (access-controlled)
- National Alliance of Concurrent Enrollment Partnerships. Fast Facts about Dual and Concurrent Enrollment. <http://www.nacep.org/research-policy/fast-facts/>
- Ralph, J. et al. (February 2013). Dual Credit and Exam-Based Courses in U.S. Public High Schools: 2010-11. Washington D.C.: National Center for Education Statistics <http://nces.ed.gov/pubs2013/2013001.pdf>

APPENDIX A

Unduplicated Enrollment Counts

- A-1 Dual Credit Headcount Enrollment by College, FY 2013-2017
- A-2 Dual Credit Headcount Enrollment vs. Overall Credit Enrollment by College, FY 2017
- A-3 Dual Credit Headcount Enrollment by Gender and by College, FY 2017
- A-4 Dual Credit Headcount Enrollment by Ethnic Origin and by College, FY 2017
- A-5 Dual Credit Headcount Enrollment by Number of Enrolled Hours and by College, FY 2017

APPENDIX B

Duplicated Course and Enrollment Counts

- B-1 Dual Credit Course Count by College, FY 2015-2017
- B-2 Dual Credit Enrollment by College, FY 2015-2017
- B-3 Average Dual Credit Class Size by College, FY 2015-2017
- B-4 Top 10 Dual Credit Course Enrollments by CIP, FY 2015-2017
- B-5 Transfer Dual Credit Course Count by College, FY 2015-2017
- B-6 Transfer Dual Credit Enrollment by College, FY 2015-2017
- B-7 Transfer Average Dual Credit Class Size by College, FY 2015-2017
- B-8 Top 5 Transfer Dual Credit Course Enrollments by College, FY 2017
- B-9 Career and Technical Education Dual Credit Course Count by College, FY 2015-2017
- B-10 Career and Technical Education Dual Credit Enrollment by College, FY 2015-2017
- B-11 Career and Technical Education Average Dual Credit Class Size by College, FY 2015-2017
- B-12 Top 5 Career and Technical Education Dual Credit Course Enrollments by College, FY 2017
- B-13 Dual Credit Enrollment by 6-digit CIP, FY 2015-2017
- B-14 Dual Credit Enrollment by 2-digit CIP, FY 2015-2017
- B-15 Dual Credit Enrollment by Career Cluster, FY 2015-2017
- B-16 Dual Credit Enrollment by Instructional Site and by College, FY 2017

APPENDIX C

- C-1 FY 2016 Graduating Dual Credit Students Enrolling in the Same Community College in FY 2017

APPENDIX D

Illinois Community Colleges by Geographic Regions

Chicago: Harold Washington College, Harry S Truman College, Kennedy-King College, Malcolm X College, Olive-Harvey College, Richard J. Daley College, and Wilbur Wright College

Northeast and Northwest: College of DuPage, College of Lake County, Elgin Community College, Harper College, Highland Community College, Kishwaukee College, McHenry County College, Moraine Valley Community College, Morton College, Oakton Community College, Prairie State College, Rock Valley College, Sauk Valley Community College, South Suburban College, Triton College, Waubensee Community College

East Central and West Central: Black Hawk College, Carl Sandburg College, Danville Area Community College, Heartland Community College, Illinois Central College, Illinois Valley Community College, John Wood Community College, Joliet Junior College, Kankakee Community College, Lincoln Land Community College, Parkland College, Richland Community College, Spoon River College

Southeast and Southwest: Frontier Community College, John A. Logan College, Kaskaskia College, Lake Land College, Lewis and Clark Community College, Lincoln Trail College, Olney Central College, Rend Lake College, Shawnee Community College, Southeastern Illinois College, Southwestern Illinois College, Wabash Valley College



Illinois Community College Board
Table A-1
DUAL CREDIT HEADCOUNT ENROLLMENT BY COLLEGE
FISCAL YEARS 2013-2017

Dist. <u>No. District/College</u>	<u>FY 2013 Headcount</u>	<u>FY 2014 Headcount</u>	<u>FY 2015 Headcount</u>	<u>FY 2016 Headcount</u>	<u>FY 2017 Headcount</u>	<u>% Change 2013-2017</u>	<u>% Change 2016-2017</u>
503 Black Hawk	1,163	1,296	1,372	1,271	1,258	8.2%	-1.0%
518 Carl Sandburg	399	443	454	434	431	8.0%	-0.7%
508 City Colleges of Chicago	(499)	(1,055)	(1,777)	(2,736)	(3,083)	(517.8%)	(12.7%)
02 Harold Washington	34	109	223	388	508	1394.1%	30.9%
04 Harry S Truman	207	214	327	353	269	30.0%	-23.8%
01 Kennedy-King	5	70	133	173	235	4600.0%	35.8%
03 Malcolm X	77	92	118	217	303	293.5%	39.6%
05 Olive-Harvey	0	201	186	300	348	---	16.0%
06 Richard J. Daley	144	236	412	628	703	388.2%	11.9%
07 Wilbur Wright	32	133	378	677	717	2140.6%	5.9%
502 College of DuPage	2,918	3,975	4,874	5,248	5,387	84.6%	2.6%
532 College of Lake County	1,140	1,267	1,292	1,217	1,366	19.8%	12.2%
507 Danville Area	1,437	1,429	1,431	1,588	939	-34.7%	-40.9%
509 Elgin	661	896	970	973	289	-56.3%	-70.3%
512 Harper	1,875	1,956	2,315	3,056	4,017	114.2%	31.4%
540 Heartland	228	348	821	774	865	279.4%	11.8%
519 Highland	833	828	799	973	987	18.5%	1.4%
514 Illinois Central	1,682	1,645	1,786	1,665	1,854	10.2%	11.4%
529 Illinois Eastern	(1,375)	(1,411)	(1,360)	(1,334)	(1,466)	(6.6%)	(9.9%)
04 Frontier	724	745	697	621	714	-1.4%	15.0%
01 Lincoln Trail	211	182	184	203	212	0.5%	4.4%
02 Olney Central	196	236	249	235	242	23.5%	3.0%
03 Wabash Valley	244	248	230	275	298	22.1%	8.4%
513 Illinois Valley	574	556	563	517	975	69.9%	88.6%
530 John A. Logan	896	1,046	1,011	943	1,072	19.6%	13.7%
539 John Wood	211	222	297	303	307	45.5%	1.3%
525 Joliet Junior	7,830	4,865	4,072	3,029	3,855	-50.8%	27.3%
520 Kankakee	420	518	465	606	638	51.9%	5.3%
501 Kaskaskia	2,663	2,809	2,955	2,889	2,817	5.8%	-2.5%
523 Kishwaukee	434	500	494	533	556	28.1%	4.3%
517 Lake Land	1,515	1,599	1,544	1,508	1,631	7.7%	8.2%
536 Lewis and Clark	4,209	4,146	3,915	3,919	4,046	-3.9%	3.2%
526 Lincoln Land	1,686	1,781	1,852	1,784	1,954	15.9%	9.5%
528 McHenry County	654	798	916	1,337	1,527	133.5%	14.2%
524 Moraine Valley	2,638	2,203	1,436	1,957	2,475	-6.2%	26.5%
527 Morton	236	229	135	146	577	144.5%	295.2%
535 Oakton	650	781	633	750	800	23.1%	6.7%
505 Parkland	915	1,004	1,042	1,146	1,068	16.7%	-6.8%
515 Prairie State	546	540	718	864	552	1.1%	-36.1%
521 Rend Lake	934	988	1,041	1,049	1,047	12.1%	-0.2%
537 Richland	880	825	851	940	885	0.6%	-5.9%
511 Rock Valley	616	653	649	650	681	10.6%	4.8%
506 Sauk Valley	726	812	847	690	758	4.4%	9.9%
531 Shawnee	474	508	493	510	558	17.7%	9.4%
510 South Suburban	632	712	773	873	817	29.3%	-6.4%
533 Southeastern Illinois	706	702	587	675	580	-17.8%	-14.1%
522 Southwestern Illinois	2,702	2,663	2,848	2,774	2,556	-5.4%	-7.9%
534 Spoon River	340	306	289	295	253	-25.6%	-14.2%
504 Triton	408	501	580	735	736	80.4%	0.1%
516 Waubensee	<u>1,058</u>	<u>1,275</u>	<u>1,461</u>	<u>2,180</u>	<u>2,234</u>	<u>111.2%</u>	<u>2.5%</u>
TOTALS/AVERAGES	48,531	48,820	50,465	54,871	57,897	19.3%	5.5%

SOURCE OF DATA: ICCB Centralized Data System - Annual Enrollment and Completion (A1) Data



Illinois Community College Board
Table A-2
DUAL CREDIT HEADCOUNT ENROLLMENT VS.
OVERALL CREDIT ENROLLMENT BY COLLEGE
FISCAL YEAR 2017

Dist. <u>No. District/College</u>	Dual Credit <u>Enrollment</u>	Total <u>Enrollment</u>	% Dual Credit <u>Enrollment</u>
503 Black Hawk	1,258	9,209	13.7%
518 Carl Sandburg	431	2,966	14.5%
508 City Colleges of Chicago	(3,083)	(77,713)	(4.0%)
02 Harold Washington	508	12,669	4.0%
04 Harry S Truman	269	14,740	1.8%
01 Kennedy-King	235	5,793	4.1%
03 Malcolm X	303	9,858	3.1%
05 Olive-Harvey	348	5,494	6.3%
06 Richard J. Daley	703	12,625	5.6%
07 Wilbur Wright	717	16,534	4.3%
502 College of DuPage	5,387	45,144	11.9%
532 College of Lake County	1,366	24,345	5.6%
507 Danville Area	939	6,473	14.5%
509 Elgin	289	15,211	1.9%
512 Harper	4,017	25,158	16.0%
540 Heartland	865	9,167	9.4%
519 Highland	987	4,106	24.0%
514 Illinois Central	1,854	13,461	13.8%
529 Illinois Eastern	(1,466)	(28,392)	(5.2%)
04 Frontier	714	8,210	8.7%
01 Lincoln Trail	212	1,513	14.0%
02 Olney Central	242	2,154	11.2%
03 Wabash Valley	298	16,515	1.8%
513 Illinois Valley	975	5,119	19.0%
530 John A. Logan	1,072	18,969	5.7%
539 John Wood	307	2,925	10.5%
525 Joliet Junior	3,855	22,351	17.2%
520 Kankakee	638	6,820	9.4%
501 Kaskaskia	2,817	6,539	43.1%
523 Kishwaukee	556	5,405	10.3%
517 Lake Land	1,631	20,207	8.1%
536 Lewis and Clark	4,046	10,145	39.9%
526 Lincoln Land	1,954	11,353	17.2%
528 McHenry County	1,527	10,205	15.0%
524 Moraine Valley	2,475	25,027	9.9%
527 Morton	577	6,647	8.7%
535 Oakton	800	18,527	4.3%
505 Parkland	1,068	12,686	8.4%
515 Prairie State	552	9,000	6.1%
521 Rend Lake	1,047	5,773	18.1%
537 Richland	885	4,852	18.2%
511 Rock Valley	681	11,568	5.9%
506 Sauk Valley	758	3,086	24.6%
531 Shawnee	558	4,640	12.0%
510 South Suburban	817	9,610	8.5%
533 Southeastern Illinois	580	4,147	14.0%
522 Southwestern Illinois	2,556	17,176	14.9%
534 Spoon River	253	2,499	10.1%
504 Triton	736	18,537	4.0%
516 Waubensee	<u>2,234</u>	<u>18,016</u>	<u>12.4%</u>
TOTALS	57,897	553,174	10.5%

SOURCE OF DATA: ICCB Centralized Data System - Annual Enrollment and Completion (A1) Data



Illinois Community College Board

Table A-3

DUAL CREDIT HEADCOUNT ENROLLMENT BY GENDER AND BY COLLEGE
FISCAL YEAR 2017

Dist.			
<u>No.</u>	<u>District/College</u>	<u>Male</u>	<u>Female</u>
			<u>Total</u>
503	Black Hawk	606	652
518	Carl Sandburg	197	234
508	City Colleges of Chicago	(1,341)	(1,742)
02	Harold Washington	195	313
04	Harry S Truman	136	133
01	Kennedy-King	102	133
03	Malcolm X	141	162
05	Olive-Harvey	125	223
06	Richard J. Daley	298	405
07	Wilbur Wright	344	373
502	College of DuPage	2,589	2,798
532	College of Lake County	701	665
507	Danville Area	465	474
509	Elgin	160	129
512	Harper	1,965	2,052
540	Heartland	356	509
519	Highland	488	499
514	Illinois Central	827	1,027
529	Illinois Eastern	(738)	(728)
04	Frontier	338	376
01	Lincoln Trail	110	102
02	Olney Central	128	114
03	Wabash Valley	162	136
513	Illinois Valley	425	550
530	John A. Logan	360	712
539	John Wood	123	184
525	Joliet Junior	1,878	1,977
520	Kankakee	263	375
501	Kaskaskia	1,401	1,416
523	Kishwaukee	301	255
517	Lake Land	823	808
536	Lewis and Clark	2,056	1,990
526	Lincoln Land	910	1,044
528	McHenry County	807	720
524	Moraine Valley	1,545	930
527	Morton	348	229
535	Oakton	405	395
505	Parkland	504	564
515	Prairie State	346	206
521	Rend Lake	477	570
537	Richland	421	464
511	Rock Valley	269	412
506	Sauk Valley	335	423
531	Shawnee	252	306
510	South Suburban	364	453
533	Southeastern Illinois	305	275
522	Southwestern Illinois	1,409	1,147
534	Spoon River	109	144
504	Triton	376	360
516	Waubonsee	<u>992</u>	<u>1,242</u>
			<u>2,234</u>
	TOTALS	28,237	29,660
			57,897

SOURCE OF DATA: ICCB Centralized Data System - Annual Enrollment and Completion (A1) Data



Illinois Community College Board
Table A-4
DUAL CREDIT HEADCOUNT ENROLLMENT BY ETHNIC ORIGIN* AND BY COLLEGE
FISCAL YEAR 2017

Dist. No. District/College	Asian	Native American	African American Non-Latino	Latino	White Non-Latino	Non- Resident Alien	Pacific Islander	Two or More Races	All Other or No Indication	Total
503 Black Hawk	27	3	53	152	968	0	2	45	8	1,258
518 Carl Sandburg	1	4	7	15	366	0	1	19	18	431
508 City Colleges of Chicago	(150)	(4)	(1,082)	(1,518)	(204)	(14)	(0)	(107)	(4)	(3,083)
02 Harold Washington	23	4	372	64	9	2	0	32	2	508
04 Harry S Truman	38	0	40	158	21	1	0	10	1	269
01 Kennedy-King	4	0	131	87	6	3	0	4	0	235
03 Malcolm X	0	0	117	181	0	0	0	5	0	303
05 Olive-Harvey	0	0	245	79	7	1	0	16	0	348
06 Richard J. Daley	21	0	137	500	34	3	0	8	0	703
07 Wilbur Wright	64	0	40	449	127	4	0	32	1	717
502 College of DuPage	533	22	365	1,134	2,849	0	0	50	434	5,387
532 College of Lake County	40	1	67	426	701	7	1	71	52	1,366
507 Danville Area	8	3	78	42	716	0	0	20	72	939
509 Elgin	4	0	9	117	143	0	0	6	10	289
512 Harper	501	8	128	1,037	1,989	0	0	123	231	4,017
540 Heartland	7	2	28	35	745	1	0	31	16	865
519 Highland	6	3	27	37	861	0	0	41	12	987
514 Illinois Central	32	5	108	224	1,427	9	1	47	1	1,854
529 Illinois Eastern	(6)	(2)	(5)	(13)	(1,421)	(0)	(0)	(19)	(0)	(1,466)
04 Frontier	4	2	2	6	692	0	0	8	0	714
01 Lincoln Trail	0	0	1	1	203	0	0	7	0	212
02 Olney Central	2	0	1	2	235	0	0	2	0	242
03 Wabash Valley	0	0	1	4	291	0	0	2	0	298
513 Illinois Valley	10	0	12	111	805	0	0	6	31	975
530 John A. Logan	8	2	43	19	826	0	0	6	168	1,072
539 John Wood	2	0	2	1	299	0	0	1	2	307
525 Joliet Junior	105	19	271	800	2,433	8	2	173	44	3,855
520 Kankakee	16	1	46	79	468	0	0	25	3	638
501 Kaskaskia	26	16	67	56	2,523	2	2	114	11	2,817
523 Kishwaukee	6	5	32	113	364	0	0	23	13	556
517 Lake Land	9	2	8	18	1,508	0	2	37	47	1,631
536 Lewis and Clark	48	25	191	55	3,097	0	4	14	612	4,046
526 Lincoln Land	27	8	118	78	1,454	0	1	64	204	1,954
528 McHenry County	35	0	17	284	1,029	3	1	75	83	1,527
524 Moraine Valley	76	5	355	565	1,313	0	1	86	74	2,475
527 Morton	1	2	14	501	28	0	1	2	28	577
535 Oakton	222	1	17	114	392	5	5	26	18	800
505 Parkland	31	3	34	67	590	1	0	30	312	1,068
515 Prairie State	4	3	390	64	69	0	0	3	19	552
521 Rend Lake	9	1	31	11	981	0	2	7	5	1,047
537 Richland	4	3	91	19	702	0	1	16	49	885
511 Rock Valley	21	0	23	107	504	0	1	18	7	681
506 Sauk Valley	5	2	13	77	638	0	0	7	16	758
531 Shawnee	2	4	54	26	468	0	0	0	4	558
510 South Suburban	25	5	346	179	219	0	3	13	27	817
533 Southeastern Illinois	5	3	6	9	517	0	1	30	9	580
522 Southwestern Illinois	30	6	309	124	1,815	8	3	161	100	2,556
534 Spoon River	0	2	1	4	240	0	0	0	6	253
504 Triton	30	0	68	329	249	0	0	18	42	736
516 Waubensee	<u>100</u>	<u>8</u>	<u>113</u>	<u>546</u>	<u>1,285</u>	<u>3</u>	<u>1</u>	<u>74</u>	<u>104</u>	<u>2,234</u>
TOTALS	2,172	183	4,629	9,106	37,206	61	36	1,608	2,896	57,897

*The Ethnicity code was more closely aligned with federal reporting in 2016 and 2017.

SOURCE OF DATA: ICCB Centralized Data System - Annual Enrollment and Completion (A1) Data



Illinois Community College Board
Table A-5
DUAL CREDIT HEADCOUNT ENROLLMENT
BY NUMBER OF ENROLLED HOURS AND BY COLLEGE
FISCAL YEAR 2017

Dist. <u>No. District/College</u>	<u>0.5-3</u>	<u>4-6</u>	<u>7-9</u>	<u>10-12</u>	<u>13 and up</u>	<u>Total</u>
503 Black Hawk	323	417	232	138	148	1,258
518 Carl Sandburg	58	137	57	78	101	431
508 City Colleges of Chicago	(833)	(1,412)	(468)	(249)	(121)	(3,083)
02 Harold Washington	93	271	49	59	36	508
04 Harry S Truman	111	102	20	26	10	269
01 Kennedy-King	119	82	12	15	7	235
03 Malcolm X	80	141	39	23	20	303
05 Olive-Harvey	47	196	49	38	18	348
06 Richard J. Daley	153	277	193	56	24	703
07 Wilbur Wright	230	343	106	32	6	717
502 College of DuPage	3,349	1,187	612	92	147	5,387
532 College of Lake County	546	488	177	140	15	1,366
507 Danville Area	139	356	131	133	180	939
509 Elgin	122	49	51	20	47	289
512 Harper	1,921	1,419	452	151	74	4,017
540 Heartland	228	316	191	85	45	865
519 Highland	417	277	194	80	19	987
514 Illinois Central	510	600	315	203	226	1,854
529 Illinois Eastern	(283)	(298)	(241)	(168)	(476)	(1,466)
04 Frontier	143	133	110	63	265	714
01 Lincoln Trail	12	73	59	18	50	212
02 Olney Central	44	36	36	51	75	242
03 Wabash Valley	84	56	36	36	86	298
513 Illinois Valley	415	337	111	61	51	975
530 John A. Logan	528	367	122	35	20	1,072
539 John Wood	96	126	36	32	17	307
525 Joliet Junior	1,652	1,669	294	150	90	3,855
520 Kankakee	218	251	138	23	8	638
501 Kaskaskia	982	824	381	235	395	2,817
523 Kishwaukee	151	142	168	42	53	556
517 Lake Land	328	522	254	257	270	1,631
536 Lewis and Clark	1,552	967	586	302	639	4,046
526 Lincoln Land	790	653	225	159	127	1,954
528 McHenry County	716	278	333	160	40	1,527
524 Moraine Valley	1,647	581	204	36	7	2,475
527 Morton	464	105	7	1	0	577
535 Oakton	414	166	206	13	1	800
505 Parkland	173	446	174	154	121	1,068
515 Prairie State	416	124	10	2	0	552
521 Rend Lake	262	234	137	114	300	1,047
537 Richland	312	298	106	102	67	885
511 Rock Valley	139	116	74	54	298	681
506 Sauk Valley	185	199	142	132	100	758
531 Shawnee	131	182	112	65	68	558
510 South Suburban	695	116	6	0	0	817
533 Southeastern Illinois	332	118	44	34	52	580
522 Southwestern Illinois	1,108	905	198	102	243	2,556
534 Spoon River	52	96	53	21	31	253
504 Triton	256	248	171	36	25	736
516 Waubensee	<u>921</u>	<u>739</u>	<u>329</u>	<u>119</u>	<u>126</u>	<u>2,234</u>
TOTALS	23,664	17,765	7,742	3,978	4,748	57,897

SOURCE OF DATA: ICCB Centralized Data System - Annual Enrollment and Completion (A1) Data



Illinois Community College Board
Table B-1
DUAL CREDIT COURSE COUNT BY COLLEGE
FOR FISCAL YEARS 2015-2017

Dist. No. District/College	2015	2016	2017	FY 2016-2017 1-Year Difference	
				Number	Percent
503 Black Hawk	333	311	311	0	0.0%
518 Carl Sandburg	201	178	201	23	12.9%
508 City Colleges of Chicago	(426)	(599)	(482)	(-117)	(-19.5%)
02 Harold Washington	118	119	46	-73	-61.3%
04 Harry S Truman	60	118	69	-49	-41.5%
01 Kennedy-King	27	46	29	-17	-37.0%
03 Malcolm X	43	55	53	-2	-3.6%
05 Olive-Harvey	27	45	52	7	15.6%
06 Richard J. Daley	62	138	160	22	15.9%
07 Wilbur Wright	89	78	73	-5	-6.4%
502 College of DuPage	481	434	459	25	5.8%
532 College of Lake County	139	151	154	3	2.0%
507 Danville Area	522	576	631	55	9.5%
509 Elgin	83	80	69	-11	-13.8%
512 Harper	189	296	369	73	24.7%
540 Heartland	184	184	175	-9	-4.9%
519 Highland	131	160	163	3	1.9%
514 Illinois Central	231	224	253	29	12.9%
529 Illinois Eastern	(406)	(354)	(500)	(146)	(41.2%)
04 Frontier	206	159	250	91	57.2%
01 Lincoln Trail	45	47	54	7	14.9%
02 Olney Central	59	57	66	9	15.8%
03 Wabash Valley	96	91	130	39	42.9%
513 Illinois Valley	199	190	157	-33	-17.4%
530 John A. Logan	111	121	116	-5	-4.1%
539 John Wood	94	87	91	4	4.6%
525 Joliet Junior	471	307	368	61	19.9%
520 Kankakee	48	54	72	18	33.3%
501 Kaskaskia	529	517	440	-77	-14.9%
523 Kishwaukee	60	61	80	19	31.1%
517 Lake Land	316	331	372	41	12.4%
536 Lewis and Clark	578	542	554	12	2.2%
526 Lincoln Land	238	245	248	3	1.2%
528 McHenry County	101	103	113	10	9.7%
524 Moraine Valley	137	143	171	28	19.6%
527 Morton	17	15	48	33	220.0%
535 Oakton	53	57	71	14	24.6%
505 Parkland	336	336	312	-24	-7.1%
515 Prairie State	80	75	45	-30	-40.0%
521 Rend Lake	191	267	274	7	2.6%
537 Richland	226	289	269	-20	-6.9%
511 Rock Valley	727	896	872	-24	-2.7%
506 Sauk Valley	338	328	335	7	2.1%
531 Shawnee	54	59	64	5	8.5%
510 South Suburban	122	156	159	3	1.9%
533 Southeastern Illinois	255	263	231	-32	-12.2%
522 Southwestern Illinois	769	995	963	-32	-3.2%
534 Spoon River	87	124	132	8	6.5%
504 Triton	113	142	169	27	19.0%
516 Waubensee	<u>410</u>	<u>490</u>	<u>501</u>	<u>11</u>	<u>2.2%</u>
TOTALS	9,986	10,740	10,994	254	2.4%
Pure					
Minimum	17	15	29	-77	-61.3%
Maximum	769	995	963	91	220.0%
Median	134	154	162	7	2.4%
Standard Deviation	187	208	207	32	37.6%
Average	208	224	229	5	7.8%

SOURCE OF DATA: ICCB Centralized Data System - Annual Course (AC) Data



Illinois Community College Board
Table B-2
DUAL CREDIT ENROLLMENT BY COLLEGE
FOR FISCAL YEARS 2015-2017

Dist. No. District/College	2015	2016	2017	FY 2016-2017 1-Year Difference	
				Number	Percent
503 Black Hawk	3,689	3,243	3,228	-15	-0.5%
518 Carl Sandburg	1,408	1,428	1,553	125	8.8%
508 City Colleges of Chicago	(2,623)	(4,603)	(3,199)	(-1,404)	(-30.5%)
02 Harold Washington	468	792	92	-700	-88.4%
04 Harry S Truman	521	655	283	-372	-56.8%
01 Kennedy-King	144	334	221	-113	-33.8%
03 Malcolm X	176	396	389	-7	-1.8%
05 Olive-Harvey	281	415	549	134	32.3%
06 Richard J. Daley	513	1,094	1,057	-37	-3.4%
07 Wilbur Wright	520	917	608	-309	-33.7%
502 College of DuPage	7,628	8,039	8,269	230	2.9%
532 College of Lake County	1,937	1,775	1,968	193	10.9%
507 Danville Area	1,896	2,306	2,512	206	8.9%
509 Elgin	374	365	262	-103	-28.2%
512 Harper	3,098	4,097	5,490	1,393	34.0%
540 Heartland	1,697	1,523	1,614	91	6.0%
519 Highland	1,306	1,740	1,731	-9	-0.5%
514 Illinois Central	3,924	3,786	4,626	840	22.2%
529 Illinois Eastern	(4,314)	(4,255)	(4,876)	(621)	(14.6%)
04 Frontier	2,455	2,138	2,595	457	21.4%
01 Lincoln Trail	417	538	528	-10	-1.9%
02 Olney Central	823	783	766	-17	-2.2%
03 Wabash Valley	619	796	987	191	24.0%
513 Illinois Valley	1,452	1,327	1,705	378	28.5%
530 John A. Logan	1,419	1,953	1,996	43	2.2%
539 John Wood	592	574	597	23	4.0%
525 Joliet Junior	6,997	4,730	6,183	1,453	30.7%
520 Kankakee	644	909	916	7	0.8%
501 Kaskaskia	7,129	7,151	6,717	-434	-6.1%
523 Kishwaukee	719	795	849	54	6.8%
517 Lake Land	3,599	3,584	3,958	374	10.4%
536 Lewis and Clark	9,006	8,894	9,103	209	2.3%
526 Lincoln Land	3,224	3,015	3,500	485	16.1%
528 McHenry County	1,520	2,026	2,300	274	13.5%
524 Moraine Valley	2,207	2,632	3,356	724	27.5%
527 Morton	201	227	623	396	174.4%
535 Oakton	796	903	1,025	122	13.5%
505 Parkland	2,150	2,376	2,345	-31	-1.3%
515 Prairie State	1,036	1,165	647	-518	-44.5%
521 Rend Lake	2,845	3,040	3,377	337	11.1%
537 Richland	1,647	2,102	1,876	-226	-10.8%
511 Rock Valley	3,038	3,496	3,380	-116	-3.3%
506 Sauk Valley	2,140	1,649	1,887	238	14.4%
531 Shawnee	870	913	870	-43	-4.7%
510 South Suburban	960	1,157	1,188	31	2.7%
533 Southeastern Illinois	1,575	1,789	1,502	-287	-16.0%
522 Southwestern Illinois	5,589	5,852	6,221	369	6.3%
534 Spoon River	351	692	626	-66	-9.5%
504 Triton	867	1,169	1,254	85	7.3%
516 Waubensee	<u>2,876</u>	<u>4,081</u>	<u>4,314</u>	<u>233</u>	<u>5.7%</u>
TOTALS	99,343	105,361	111,643	6,282	6.0%
Pure					
Minimum	144	227	92	-700	-88.4%
Maximum	9,006	8,894	9,103	1,453	174.4%
Median	1,436	1,586	1,660	70	3.4%
Standard Deviation	2,094	2,001	2,164	397	33.9%
Average	2,070	2,195	2,326	131	4.2%

SOURCE OF DATA: ICCB Centralized Data System - Annual Course (AC) Data



Illinois Community College Board
Table B-3
AVERAGE DUAL CREDIT CLASS SIZE BY COLLEGE
FOR FISCAL YEARS 2015-2017

Dist. No. District/College	2015	2016	2017	FY 2016-2017 1-Year Difference	
				Number	Percent
503 Black Hawk	11.1	10.4	10.4	0.0	-0.5%
518 Carl Sandburg	7.0	8.0	7.7	-0.3	-3.7%
508 City Colleges of Chicago	(6.2)	(7.7)	(6.6)	(-1.0)	(-13.6%)
02 Harold Washington	4.0	6.7	2.0	-4.7	-69.9%
04 Harry S Truman	8.7	5.6	4.1	-1.4	-26.1%
01 Kennedy-King	5.3	7.3	7.6	0.4	5.0%
03 Malcolm X	4.1	7.2	7.3	0.1	1.9%
05 Olive-Harvey	10.4	9.2	10.6	1.3	14.5%
06 Richard J. Daley	8.3	7.9	6.6	-1.3	-16.7%
07 Wilbur Wright	5.8	11.8	8.3	-3.4	-29.2%
502 College of DuPage	15.9	18.5	18.0	-0.5	-2.7%
532 College of Lake County	13.9	11.8	12.8	1.0	8.7%
507 Danville Area	3.6	4.0	4.0	0.0	-0.6%
509 Elgin	4.5	4.6	3.8	-0.8	-16.8%
512 Harper	16.4	13.8	14.9	1.0	7.5%
540 Heartland	9.2	8.3	9.2	0.9	11.4%
519 Highland	10.0	10.9	10.6	-0.3	-2.3%
514 Illinois Central	17.0	16.9	18.3	1.4	8.2%
529 Illinois Eastern	(10.6)	(12.0)	(9.8)	(-2.3)	(-18.9%)
04 Frontier	11.9	13.4	10.4	-3.1	-22.8%
01 Lincoln Trail	9.3	11.4	9.8	-1.7	-14.6%
02 Olney Central	13.9	13.7	11.6	-2.1	-15.5%
03 Wabash Valley	6.4	8.7	7.6	-1.2	-13.2%
513 Illinois Valley	7.3	7.0	10.9	3.9	55.5%
530 John A. Logan	12.8	16.1	17.2	1.1	6.6%
539 John Wood	6.3	6.6	6.6	0.0	-0.6%
525 Joliet Junior	14.9	15.4	16.8	1.4	9.1%
520 Kankakee	13.4	16.8	12.7	-4.1	-24.4%
501 Kaskaskia	13.5	13.8	15.3	1.4	10.4%
523 Kishwaukee	12.0	13.0	10.6	-2.4	-18.6%
517 Lake Land	11.4	10.8	10.6	-0.2	-1.7%
536 Lewis and Clark	15.6	16.4	16.4	0.0	0.1%
526 Lincoln Land	13.5	12.3	14.1	1.8	14.7%
528 McHenry County	15.0	19.7	20.4	0.7	3.5%
524 Moraine Valley	16.1	18.4	19.6	1.2	6.6%
527 Morton	11.8	15.1	13.0	-2.2	-14.2%
535 Oakton	15.0	15.8	14.4	-1.4	-8.9%
505 Parkland	6.4	7.1	7.5	0.4	6.3%
515 Prairie State	13.0	15.5	14.4	-1.2	-7.4%
521 Rend Lake	14.9	11.4	12.3	0.9	8.2%
537 Richland	7.3	7.3	7.0	-0.3	-4.1%
511 Rock Valley	4.2	3.9	3.9	0.0	-0.7%
506 Sauk Valley	6.3	5.0	5.6	0.6	12.0%
531 Shawnee	16.1	15.5	13.6	-1.9	-12.2%
510 South Suburban	7.9	7.4	7.5	0.1	0.7%
533 Southeastern Illinois	6.2	6.8	6.5	-0.3	-4.4%
522 Southwestern Illinois	7.3	5.9	6.5	0.6	9.8%
534 Spoon River	4.0	5.6	4.7	-0.8	-15.0%
504 Triton	7.7	8.2	7.4	-0.8	-9.9%
516 Waubonsee	<u>7.0</u>	<u>8.3</u>	<u>8.6</u>	<u>0.3</u>	<u>3.4%</u>
TOTALS	9.9	9.8	10.2	0.3	3.5%
Pure					
Minimum	3.6	3.9	2.0	-4.7	-69.9%
Maximum	17.0	19.7	20.4	3.9	55.5%
Median	9.6	10.6	10.4	0.0	-0.6%
Standard Deviation	4.1	4.4	4.6	1.6	17.2%
Average	10.1	10.7	10.4	-0.3	-3.2%

SOURCE OF DATA: ICCB Centralized Data System - Annual Course (AC) Data



Illinois Community College Board

Table B-4

TOP TEN DUAL CREDIT COURSE ENROLLMENTS BY CIP (BASED ON FISCAL YEAR 2017)
FOR FISCAL YEARS 2015-2017

<u>CIP</u>	<u>COURSE NAME</u>	<u>2015</u>	<u>2016</u>	<u>2017</u>	FY 2016-2017 1-Year Difference	
					<u>Number</u>	<u>Percent</u>
23.1301	Writing, General (New)*	15,575	16,671	17,278	607	3.6%
27.0101	Mathematics, General	5,478	6,454	6,674	220	3.4%
16.0905	Spanish Language and Literature	4,708	4,975	5,157	182	3.7%
23.1304	Rhetoric and Composition (New)*	3,541	3,710	3,967	257	6.9%
54.0102	American History (United States) (Moved from 45.0802)	2,952	3,409	3,860	451	13.2%
42.0101	Psychology, General	3,851	3,047	3,404	357	11.7%
48.0508	Welding Technology/Welder	2,728	2,777	2,959	182	6.6%
31.0501	Health and Physical Education, General	2,384	2,456	2,887	431	17.5%
51.3902	Nursing Assistant/Aide and Patient Care Assistant/Aide	2,259	2,301	2,678	377	16.4%
26.0101	Biology/Biological Sciences, General	<u>1,764</u>	<u>2,549</u>	<u>2,656</u>	<u>107</u>	<u>4.2%</u>
Totals		45,240	48,349	51,520	3,171	6.6%
Grand Total		99,343	105,361	111,643	6,282	6.0%
Percent Top Ten of Grand Total		45.5%	45.9%	46.1%	0.3%	0.6%

*CIP Number and Title were changed from 23.0401 English Composition to 23.1301 Writing General in 2010

*CIP Number and Title were changed from 23.1001 Speech and Rhetorical Studies to 23.1304 Rhetoric and Composition in 2010

SOURCE OF DATA: ICCB Centralized Data System - Annual Course (AC) Data



Illinois Community College Board
Table B-5
DUAL CREDIT COURSE COUNT BY COLLEGE
IN BACCALAUREATE/TRANSFER EDUCATION
FOR FISCAL YEARS 2015-2017

Dist. No. District/College	2015	2016	2017	FY 2016-2017 1-Year Difference	
				Number	Percent
503 Black Hawk	215	189	188	-1	-0.5%
518 Carl Sandburg	161	133	153	20	15.0%
508 City Colleges of Chicago	(370)	(518)	(413)	(-105)	(-20.3%)
02 Harold Washington	104	105	43	-62	-59.0%
04 Harry S Truman	49	103	61	-42	-40.8%
01 Kennedy-King	26	39	27	-12	-30.8%
03 Malcolm X	34	45	49	4	8.9%
05 Olive-Harvey	27	41	46	5	12.2%
06 Richard J. Daley	56	123	127	4	3.3%
07 Wilbur Wright	74	62	60	-2	-3.2%
502 College of DuPage	142	131	141	10	7.6%
532 College of Lake County	45	52	64	12	23.1%
507 Danville Area	214	279	312	33	11.8%
509 Elgin	14	15	13	-2	-13.3%
512 Harper	60	131	161	30	22.9%
540 Heartland	142	127	122	-5	-3.9%
519 Highland	34	56	58	2	3.6%
514 Illinois Central	181	172	176	4	2.3%
529 Illinois Eastern	(277)	(228)	(299)	(71)	(31.1%)
04 Frontier	148	110	151	41	37.3%
01 Lincoln Trail	33	32	37	5	15.6%
02 Olney Central	43	41	47	6	14.6%
03 Wabash Valley	53	45	64	19	42.2%
513 Illinois Valley	156	155	84	-71	-45.8%
530 John A. Logan	68	78	78	0	0.0%
539 John Wood	80	73	71	-2	-2.7%
525 Joliet Junior	298	216	210	-6	-2.8%
520 Kankakee	30	38	48	10	26.3%
501 Kaskaskia	261	259	229	-30	-11.6%
523 Kishwaukee	13	17	21	4	23.5%
517 Lake Land	153	162	171	9	5.6%
536 Lewis and Clark	296	278	303	25	9.0%
526 Lincoln Land	135	137	148	11	8.0%
528 McHenry County	55	67	58	-9	-13.4%
524 Moraine Valley	18	17	21	4	23.5%
527 Morton	0	6	19	13	216.7%
535 Oakton	23	23	27	4	17.4%
505 Parkland	244	235	223	-12	-5.1%
515 Prairie State	3	4	0	-4	-100.0%
521 Rend Lake	144	180	188	8	4.4%
537 Richland	149	176	172	-4	-2.3%
511 Rock Valley	667	805	807	2	0.2%
506 Sauk Valley	253	232	239	7	3.0%
531 Shawnee	37	41	44	3	7.3%
510 South Suburban	19	58	71	13	22.4%
533 Southeastern Illinois	141	149	143	-6	-4.0%
522 Southwestern Illinois	551	771	751	-20	-2.6%
534 Spoon River	79	96	102	6	6.3%
504 Triton	77	89	82	-7	-7.9%
516 Waubonsee	<u>307</u>	<u>382</u>	<u>394</u>	<u>12</u>	<u>3.1%</u>
TOTALS	6,112	6,775	6,804	29	0.4%
Pure					
Minimum	0	4	0	-71	-100.0%
Maximum	667	805	807	41	216.7%
Median	78	104	83	4	3.4%
Standard Deviation	132	159	158	20	38.9%
Average	127	141	142	1	5.2%

SOURCE OF DATA: ICCB Centralized Data System - Annual Course (AC) Data



Illinois Community College Board
Table B-6
DUAL CREDIT ENROLLMENT BY COLLEGE
IN BACCALAUREATE/TRANSFER EDUCATION
FOR FISCAL YEARS 2015-2017

Dist. No. District/College	2015	2016	2017	FY 2016-2017 1-Year Difference	
				Number	Percent
503 Black Hawk	2,537	2,151	2,164	13	0.6%
518 Carl Sandburg	1,116	1,016	1,161	145	14.3%
508 City Colleges of Chicago	(2,308)	(3,813)	(2,766)	(-1,047)	(-27.5%)
02 Harold Washington	407	541	86	-455	-84.1%
04 Harry S Truman	445	579	259	-320	-55.3%
01 Kennedy-King	124	290	216	-74	-25.5%
03 Malcolm X	167	364	370	6	1.6%
05 Olive-Harvey	281	382	503	121	31.7%
06 Richard J. Daley	486	959	870	-89	-9.3%
07 Wilbur Wright	398	698	462	-236	-33.8%
502 College of DuPage	2,735	2,526	2,751	225	8.9%
532 College of Lake County	933	915	1,177	262	28.6%
507 Danville Area	859	1,262	1,379	117	9.3%
509 Elgin	85	83	66	-17	-20.5%
512 Harper	1,220	2,124	2,999	875	41.2%
540 Heartland	1,351	1,207	1,223	16	1.3%
519 Highland	330	629	652	23	3.7%
514 Illinois Central	3,052	2,997	3,413	416	13.9%
529 Illinois Eastern	(3,448)	(3,166)	(3,472)	(306)	(9.7%)
04 Frontier	2,028	1,695	1,879	184	10.9%
01 Lincoln Trail	345	427	439	12	2.8%
02 Olney Central	732	637	620	-17	-2.7%
03 Wabash Valley	343	407	534	127	31.2%
513 Illinois Valley	1,336	1,232	1,211	-21	-1.7%
530 John A. Logan	1,047	1,465	1,482	17	1.2%
539 John Wood	555	536	500	-36	-6.7%
525 Joliet Junior	5,580	3,984	4,141	157	3.9%
520 Kankakee	377	678	603	-75	-11.1%
501 Kaskaskia	3,979	4,005	3,819	-186	-4.6%
523 Kishwaukee	175	265	261	-4	-1.5%
517 Lake Land	2,332	2,332	2,448	116	5.0%
536 Lewis and Clark	5,424	5,239	5,648	409	7.8%
526 Lincoln Land	2,279	2,232	2,559	327	14.7%
528 McHenry County	1,070	1,689	1,494	-195	-11.5%
524 Moraine Valley	308	335	380	45	13.4%
527 Morton	0	91	308	217	238.5%
535 Oakton	396	403	494	91	22.6%
505 Parkland	1,570	1,685	1,636	-49	-2.9%
515 Prairie State	34	97	0	-97	-100.0%
521 Rend Lake	2,314	2,388	2,831	443	18.6%
537 Richland	851	1,097	936	-161	-14.7%
511 Rock Valley	2,737	3,139	3,173	34	1.1%
506 Sauk Valley	1,553	881	1,135	254	28.8%
531 Shawnee	666	706	691	-15	-2.1%
510 South Suburban	147	511	477	-34	-6.7%
533 Southeastern Illinois	948	991	861	-130	-13.1%
522 Southwestern Illinois	3,080	3,552	3,955	403	11.3%
534 Spoon River	323	565	541	-24	-4.2%
504 Triton	672	845	664	-181	-21.4%
516 Waubensee	<u>1,971</u>	<u>3,286</u>	<u>3,595</u>	<u>309</u>	<u>9.4%</u>
TOTALS	61,698	66,118	69,066	2,948	4.5%
Pure					
Minimum	0	83	0	-455	-100.0%
Maximum	5,580	5,239	5,648	875	238.5%
Median	855	937	903	15	1.2%
Standard Deviation	1,303	1,197	1,314	224	42.8%
Average	1,285	1,377	1,439	61	3.0%

SOURCE OF DATA: ICCB Centralized Data System - Annual Course (AC) Data



Illinois Community College Board
Table B-7
AVERAGE DUAL CREDIT CLASS SIZE BY COLLEGE
IN BACCALAUREATE/TRANSFER EDUCATION
FOR FISCAL YEARS 2015-2017

Dist. No. District/College	2015	2016	2017	FY 2016-2017 1-Year Difference	
				Number	Percent
503 Black Hawk	11.8	11.4	11.5	0.1	1.1%
518 Carl Sandburg	6.9	7.6	7.6	-0.1	-0.7%
508 City Colleges of Chicago	(6.2)	(7.4)	(6.7)	(-0.7)	(-9.0%)
02 Harold Washington	3.9	5.2	2.0	-3.2	-61.2%
04 Harry S Truman	9.1	5.6	4.2	-1.4	-24.5%
01 Kennedy-King	4.8	7.4	8.0	0.6	7.6%
03 Malcolm X	4.9	8.1	7.6	-0.5	-6.6%
05 Olive-Harvey	10.4	9.3	10.9	1.6	17.4%
06 Richard J. Daley	8.7	7.8	6.9	-0.9	-12.1%
07 Wilbur Wright	5.4	11.3	7.7	-3.6	-31.6%
502 College of DuPage	19.3	19.3	19.5	0.2	1.2%
532 College of Lake County	20.7	17.6	18.4	0.8	4.5%
507 Danville Area	4.0	4.5	4.4	-0.1	-2.3%
509 Elgin	6.1	5.5	5.1	-0.5	-8.2%
512 Harper	20.3	16.2	18.6	2.4	14.9%
540 Heartland	9.5	9.5	10.0	0.5	5.5%
519 Highland	9.7	11.2	11.2	0.0	0.1%
514 Illinois Central	16.9	17.4	19.4	2.0	11.3%
529 Illinois Eastern	(12.4)	(13.9)	(11.6)	(-2.3)	(-16.4%)
04 Frontier	13.7	15.4	12.4	-3.0	-19.2%
01 Lincoln Trail	10.5	13.3	11.9	-1.5	-11.1%
02 Olney Central	17.0	15.5	13.2	-2.3	-15.1%
03 Wabash Valley	6.5	9.0	8.3	-0.7	-7.7%
513 Illinois Valley	8.6	7.9	14.4	6.5	81.4%
530 John A. Logan	15.4	18.8	19.0	0.2	1.2%
539 John Wood	6.9	7.3	7.0	-0.3	-4.1%
525 Joliet Junior	18.7	18.4	19.7	1.3	6.9%
520 Kankakee	12.6	17.8	12.6	-5.3	-29.6%
501 Kaskaskia	15.2	15.5	16.7	1.2	7.8%
523 Kishwaukee	13.5	15.6	12.4	-3.2	-20.3%
517 Lake Land	15.2	14.4	14.3	-0.1	-0.6%
536 Lewis and Clark	18.3	18.8	18.6	-0.2	-1.1%
526 Lincoln Land	16.9	16.3	17.3	1.0	6.1%
528 McHenry County	19.5	25.2	25.8	0.5	2.2%
524 Moraine Valley	17.1	19.7	18.1	-1.6	-8.2%
527 Morton	--	15.2	16.2	1.0	6.9%
535 Oakton	17.2	17.5	18.3	0.8	4.4%
505 Parkland	6.4	7.2	7.3	0.2	2.3%
515 Prairie State	11.3	24.3	--	--	--
521 Rend Lake	16.1	13.3	15.1	1.8	13.5%
537 Richland	5.7	6.2	5.4	-0.8	-12.7%
511 Rock Valley	4.1	3.9	3.9	0.0	0.8%
506 Sauk Valley	6.1	3.8	4.7	1.0	25.1%
531 Shawnee	18.0	17.2	15.7	-1.5	-8.8%
510 South Suburban	7.7	8.8	6.7	-2.1	-23.7%
533 Southeastern Illinois	6.7	6.7	6.0	-0.6	-9.5%
522 Southwestern Illinois	5.6	4.6	5.3	0.7	14.3%
534 Spoon River	4.1	5.9	5.3	-0.6	-9.9%
504 Triton	8.7	9.5	8.1	-1.4	-14.7%
516 Waubonsee	<u>6.4</u>	<u>8.6</u>	<u>9.1</u>	<u>0.5</u>	<u>6.1%</u>
TOTALS	10.1	9.8	10.2	0.4	4.0%
Pure					
Minimum	3.9	3.8	2.0	-5.3	-61.2%
Maximum	20.7	25.2	25.8	6.5	81.4%
Median	9.7	11.2	11.2	-0.1	-0.6%
Standard Deviation	5.3	5.6	5.6	1.8	19.2%
Average	11.1	12.0	11.5	-0.2	-2.1%

SOURCE OF DATA: ICCB Centralized Data System - Annual Course (AC) Data



Illinois Community College Board
Table B-8
TOP FIVE DUAL CREDIT COURSE ENROLLMENTS BY COLLEGE
IN BACCALAUREATE/TRANSFER EDUCATION
FISCAL YEAR 2017

<u>Dist. No.</u>	<u>District/College</u>	23.1301 Writing, General (New)*	27.0101 Mathematics, General	16.0905 Spanish Language and Literature	23.1304 Rhetoric and Composition (New)**	54.0102 American History (United States)	Total
503	Black Hawk	933	107	27	210	78	1,355
518	Carl Sandburg	340	14	0	136	42	532
508	City Colleges of Chicago	(905)	(412)	(320)	(21)	(116)	(1,774)
02	Harold Washington	33	21	3	0	2	59
04	Harry S Truman	33	69	0	2	15	119
01	Kennedy-King	122	29	2	0	10	163
03	Malcolm X	117	28	74	2	2	223
05	Olive-Harvey	197	43	68	1	52	361
06	Richard J. Daley	278	36	143	16	34	507
07	Wilbur Wright	125	186	30	0	1	342
502	College of DuPage	0	75	379	0	36	490
532	College of Lake County	40	0	0	37	0	77
507	Danville Area	395	41	57	86	83	662
509	Elgin	0	0	0	0	0	0
512	Harper	414	775	612	248	0	2,049
540	Heartland	399	1	0	0	79	479
519	Highland	79	25	35	42	54	235
514	Illinois Central	1,282	190	140	134	409	2,155
529	Illinois Eastern	(837)	(295)	(184)	(261)	(311)	(1,888)
04	Frontier	406	185	14	170	112	887
01	Lincoln Trail	96	78	156	13	0	343
02	Olney Central	179	24	0	72	123	398
03	Wabash Valley	156	8	14	6	76	260
513	Illinois Valley	285	82	0	202	136	705
530	John A. Logan	368	9	207	97	52	733
539	John Wood	148	71	63	63	0	345
525	Joliet Junior	2,343	244	0	96	304	2,987
520	Kankakee	237	36	34	0	72	379
501	Kaskaskia	645	361	199	654	125	1,984
523	Kishwaukee	93	51	8	18	16	186
517	Lake Land	817	468	105	103	8	1,501
536	Lewis and Clark	1,240	503	1,050	187	397	3,377
526	Lincoln Land	415	215	278	182	490	1,580
528	McHenry County	336	95	833	0	0	1,264
524	Moraine Valley	76	39	3	0	0	118
527	Morton	0	0	0	0	0	0
535	Oakton	56	255	0	0	0	311
505	Parkland	852	88	0	5	110	1,055
515	Prairie State	0	0	0	0	0	0
521	Rend Lake	525	743	100	60	49	1,477
537	Richland	449	40	5	19	7	520
511	Rock Valley	349	387	107	151	215	1,209
506	Sauk Valley	365	115	0	107	7	594
531	Shawnee	157	106	37	0	69	369
510	South Suburban	0	0	0	0	0	0
533	Southeastern Illinois	136	21	21	52	17	247
522	Southwestern Illinois	762	282	89	447	285	1,865
534	Spoon River	216	22	0	72	9	319
504	Triton	147	28	9	0	124	308
516	Waubensee	<u>617</u>	<u>478</u>	<u>255</u>	<u>266</u>	<u>160</u>	<u>1,776</u>
TOTALS		17,258	6,674	5,157	3,956	3,860	36,905
Grand Total		111,643	111,643	111,643	111,643	111,643	111,643
Percent Top Five of Grand		15.5%	6.0%	4.6%	3.5%	3.5%	33.1%

*CIP Number and Title were changed from 23.0401 English Composition to 23.1301 Writing, General in 2010.

**CIP Number and Title were changed from 23.1001 Speech and Rhetorical Studies to 23.1304 Rhetoric and Composition in

SOURCE OF DATA: ICCB Centralized Data System - Annual Course (AC) Data



Illinois Community College Board
Table B-9
DUAL CREDIT COURSE COUNT BY COLLEGE
IN CAREER AND TECHNICAL EDUCATION
FISCAL YEARS 2015-2017

Dist. No.	District/College	2015	2016	2017	FY 2016-2017 1-Year Difference	
					Number	Percent
503	Black Hawk	118	122	123	1	0.8%
518	Carl Sandburg	40	45	48	3	6.7%
508	City Colleges of Chicago	(56)	(81)	(69)	(-12)	(-14.8%)
02	Harold Washington	14	14	3	-11	-78.6%
04	Harry S Truman	11	15	8	-7	-46.7%
01	Kennedy-King	1	7	2	-5	-71.4%
03	Malcolm X	9	10	4	-6	-60.0%
05	Olive-Harvey	0	4	6	2	50.0%
06	Richard J. Daley	6	15	33	18	120.0%
07	Wilbur Wright	15	16	13	-3	-18.8%
502	College of DuPage	339	303	318	15	5.0%
532	College of Lake County	94	99	90	-9	-9.1%
507	Danville Area	308	297	319	22	7.4%
509	Elgin	69	65	56	-9	-13.8%
512	Harper	129	165	208	43	26.1%
540	Heartland	42	57	53	-4	-7.0%
519	Highland	97	104	105	1	1.0%
514	Illinois Central	50	52	77	25	48.1%
529	Illinois Eastern	(129)	(126)	(201)	(75)	(59.5%)
04	Frontier	58	49	99	50	102.0%
01	Lincoln Trail	12	15	17	2	13.3%
02	Olney Central	16	16	19	3	18.8%
03	Wabash Valley	43	46	66	20	43.5%
513	Illinois Valley	43	35	73	38	108.6%
530	John A. Logan	43	43	38	-5	-11.6%
539	John Wood	14	14	20	6	42.9%
525	Joliet Junior	173	91	158	67	73.6%
520	Kankakee	18	16	24	8	50.0%
501	Kaskaskia	268	258	211	-47	-18.2%
523	Kishwaukee	47	44	59	15	34.1%
517	Lake Land	163	169	201	32	18.9%
536	Lewis and Clark	282	264	251	-13	-4.9%
526	Lincoln Land	103	108	100	-8	-7.4%
528	McHenry County	46	36	55	19	52.8%
524	Moraine Valley	119	126	150	24	19.0%
527	Morton	17	9	29	20	222.2%
535	Oakton	30	34	44	10	29.4%
505	Parkland	92	101	89	-12	-11.9%
515	Prairie State	77	71	45	-26	-36.6%
521	Rend Lake	47	87	86	-1	-1.1%
537	Richland	77	113	97	-16	-14.2%
511	Rock Valley	60	91	65	-26	-28.6%
506	Sauk Valley	85	96	96	0	0.0%
531	Shawnee	17	18	20	2	11.1%
510	South Suburban	103	98	88	-10	-10.2%
533	Southeastern Illinois	114	114	88	-26	-22.8%
522	Southwestern Illinois	218	224	212	-12	-5.4%
534	Spoon River	8	28	30	2	7.1%
504	Triton	36	53	87	34	64.2%
516	Waubonsee	<u>103</u>	<u>108</u>	<u>107</u>	<u>-1</u>	<u>-0.9%</u>
TOTALS		3,874	3,965	4,190	225	5.7%
Pure						
Minimum		0	4	2	-47	-78.6%
Maximum		339	303	319	67	222.2%
Median		49	55	70	2	3.0%
Standard Deviation		82	77	78	21	51.0%
Average		81	83	87	5	14.5%

SOURCE OF DATA: ICCB Centralized Data System - Annual Course (AC) Data



Illinois Community College Board
Table B-10
DUAL CREDIT ENROLLMENT BY COLLEGE
IN CAREER AND TECHNICAL EDUCATION
FISCAL YEARS 2015-2017

Dist. No.	District/College	2015	2016	2017	FY 2016-2017 1-Year Difference	
					Number	Percent
503	Black Hawk	1,152	1,092	1,064	-28	-2.6%
518	Carl Sandburg	292	412	392	-20	-4.9%
508	City Colleges of Chicago	(315)	(790)	(433)	(-357)	(-45.2%)
02	Harold Washington	61	251	6	-245	-97.6%
04	Harry S Truman	76	76	24	-52	-68.4%
01	Kennedy-King	20	44	5	-39	-88.6%
03	Malcolm X	9	32	19	-13	-40.6%
05	Olive-Harvey	0	33	46	13	39.4%
06	Richard J. Daley	27	135	187	52	38.5%
07	Wilbur Wright	122	219	146	-73	-33.3%
502	College of DuPage	4,893	5,513	5,518	5	0.1%
532	College of Lake County	1,004	860	791	-69	-8.0%
507	Danville Area	1,037	1,044	1,133	89	8.5%
509	Elgin	289	282	196	-86	-30.5%
512	Harper	1,878	1,973	2,491	518	26.3%
540	Heartland	346	316	391	75	23.7%
519	Highland	976	1,111	1,079	-32	-2.9%
514	Illinois Central	872	789	1,213	424	53.7%
529	Illinois Eastern	(866)	(1,089)	(1,404)	(315)	(28.9%)
04	Frontier	427	443	716	273	61.6%
01	Lincoln Trail	72	111	89	-22	-19.8%
02	Olney Central	91	146	146	0	0.0%
03	Wabash Valley	276	389	453	64	16.5%
513	Illinois Valley	116	95	494	399	420.0%
530	John A. Logan	372	488	514	26	5.3%
539	John Wood	37	38	97	59	155.3%
525	Joliet Junior	1,417	746	2,042	1,296	173.7%
520	Kankakee	267	231	313	82	35.5%
501	Kaskaskia	3,150	3,146	2,898	-248	-7.9%
523	Kishwaukee	544	530	588	58	10.9%
517	Lake Land	1,267	1,252	1,510	258	20.6%
536	Lewis and Clark	3,582	3,655	3,455	-200	-5.5%
526	Lincoln Land	945	783	941	158	20.2%
528	McHenry County	450	337	806	469	139.2%
524	Moraine Valley	1,899	2,297	2,976	679	29.6%
527	Morton	201	136	315	179	131.6%
535	Oakton	400	500	531	31	6.2%
505	Parkland	580	691	709	18	2.6%
515	Prairie State	1,002	1,068	647	-421	-39.4%
521	Rend Lake	531	652	546	-106	-16.3%
537	Richland	796	1,005	940	-65	-6.5%
511	Rock Valley	301	357	207	-150	-42.0%
506	Sauk Valley	587	768	752	-16	-2.1%
531	Shawnee	204	207	179	-28	-13.5%
510	South Suburban	813	646	711	65	10.1%
533	Southeastern Illinois	627	798	641	-157	-19.7%
522	Southwestern Illinois	2,509	2,300	2,266	-34	-1.5%
534	Spoon River	28	127	85	-42	-33.1%
504	Triton	195	324	590	266	82.1%
516	Waubonsee	905	795	719	-76	-9.6%
TOTALS		37,645	39,243	42,577	3,334	8.5%
Pure						
Minimum		0	32	5	-421	-97.6%
Maximum		4,893	5,513	5,518	1,296	420.0%
Median		439	494	589	3	0.0%
Standard Deviation		983	1,032	1,060	269	79.4%
Average		784	818	887	69	19.1%

SOURCE OF DATA: ICCB Centralized Data System - Annual Course (AC) Data



Illinois Community College Board
Table B-11
AVERAGE DUAL CREDIT CLASS SIZE BY COLLEGE
IN CAREER AND TECHNICAL EDUCATION
FISCAL YEARS 2015-2017

Dist. No.	District/College	2015	2016	2017	FY 2016-2017 1-Year Difference	
					Number	Percent
503	Black Hawk	9.8	9.0	8.7	-0.3	-3.4%
518	Carl Sandburg	7.3	9.2	8.2	-1.0	-10.8%
508	City Colleges of Chicago	(5.6)	(9.8)	(6.3)	(-3.5)	(-35.7%)
02	Harold Washington	4.4	17.9	2.0	-15.9	-88.8%
04	Harry S Truman	6.9	5.1	3.0	-2.1	-40.8%
01	Kennedy-King	20.0	6.3	2.5	-3.8	-60.2%
03	Malcolm X	1.0	3.2	4.8	1.6	48.4%
05	Olive-Harvey	--	8.3	7.7	-0.6	-7.1%
06	Richard J. Daley	4.5	9.0	5.7	-3.3	-37.0%
07	Wilbur Wright	8.1	13.7	11.2	-2.5	-17.9%
502	College of DuPage	14.4	18.2	17.4	-0.8	-4.6%
532	College of Lake County	10.7	8.7	8.8	0.1	1.2%
507	Danville Area	3.4	3.5	3.6	0.0	1.0%
509	Elgin	4.2	4.3	3.5	-0.8	-19.3%
512	Harper	14.6	12.0	12.0	0.0	0.2%
540	Heartland	8.2	5.5	7.4	1.8	33.1%
519	Highland	10.1	10.7	10.3	-0.4	-3.8%
514	Illinois Central	17.4	15.2	15.8	0.6	3.8%
529	Illinois Eastern	(6.7)	(8.6)	(7.0)	(-1.7)	(-19.2%)
04	Frontier	7.4	9.0	7.2	-1.8	-20.0%
01	Lincoln Trail	6.0	7.4	5.2	-2.2	-29.3%
02	Olney Central	5.7	9.1	7.7	-1.4	-15.8%
03	Wabash Valley	6.4	8.5	6.9	-1.6	-18.8%
513	Illinois Valley	2.7	2.7	6.8	4.1	149.3%
530	John A. Logan	8.7	11.3	13.5	2.2	19.2%
539	John Wood	2.6	2.7	4.9	2.1	78.7%
525	Joliet Junior	8.2	8.2	12.9	4.7	57.7%
520	Kankakee	14.8	14.4	13.0	-1.4	-9.7%
501	Kaskaskia	11.8	12.2	13.7	1.5	12.6%
523	Kishwaukee	11.6	12.0	10.0	-2.1	-17.3%
517	Lake Land	7.8	7.4	7.5	0.1	1.4%
536	Lewis and Clark	12.7	13.8	13.8	-0.1	-0.6%
526	Lincoln Land	9.2	7.3	9.4	2.2	29.8%
528	McHenry County	9.8	9.4	14.7	5.3	56.5%
524	Moraine Valley	16.0	18.2	19.8	1.6	8.8%
527	Morton	11.8	15.1	10.9	-4.2	-28.1%
535	Oakton	13.3	14.7	12.1	-2.6	-17.9%
505	Parkland	6.3	6.8	8.0	1.1	16.4%
515	Prairie State	13.0	15.0	14.4	-0.7	-4.4%
521	Rend Lake	11.3	7.5	6.3	-1.1	-15.3%
537	Richland	10.3	8.9	9.7	0.8	9.0%
511	Rock Valley	5.0	3.9	3.2	-0.7	-18.8%
506	Sauk Valley	6.9	8.0	7.8	-0.2	-2.1%
531	Shawnee	12.0	11.5	9.0	-2.6	-22.2%
510	South Suburban	7.9	6.6	8.1	1.5	22.6%
533	Southeastern Illinois	5.5	7.0	7.3	0.3	4.1%
522	Southwestern Illinois	11.5	10.3	10.7	0.4	4.1%
534	Spoon River	3.5	4.5	2.8	-1.7	-37.5%
504	Triton	5.4	6.1	6.8	0.7	10.9%
516	Waubonsee	<u>8.8</u>	<u>7.4</u>	<u>6.7</u>	<u>-0.6</u>	<u>-8.7%</u>
TOTALS		9.7	9.9	10.2	0.3	2.7%
Pure						
Minimum		1.0	2.7	2.0	-15.9	-88.8%
Maximum		20.0	18.2	19.8	5.3	149.3%
Median		8.2	8.8	8.0	-0.4	-3.6%
Standard Deviation		4.1	4.1	4.0	3.0	36.1%
Average		8.9	9.3	8.8	-0.5	0.2%

SOURCE OF DATA: ICCB Centralized Data System - Annual Course (AC) Data



Illinois Community College Board
Table B-12
TOP FIVE DUAL CREDIT COURSE ENROLLMENTS BY COLLEGE
IN CAREER AND TECHNICAL EDUCATION
FISCAL YEAR 2017

<u>Dist.</u> <u>No.</u>	<u>District/College</u>	48.0508 Welding Technology/Welder	51.3902 Nurse/Nursing Assistant/Aide and Patient Care Assistant (Moved from 51.1614)	52.0407 Business/Office Automation/Technology/Data Entry	52.0408 General Office Occupations and Clerical Services	11.0201 Computer Programming/Programmer, General	Total
503	Black Hawk	487	94	21	0	33	635
518	Carl Sandburg	108	0	8	1	0	117
508	City Colleges of Chicago	(1)	(0)	(82)	(0)	(63)	(146)
02	Harold Washington	0	0	0	0	0	0
04	Harry S Truman	0	0	1	0	0	1
01	Kennedy-King	0	0	0	0	0	0
03	Malcolm X	0	0	3	0	1	4
05	Olive-Harvey	0	0	2	0	0	2
06	Richard J. Daley	1	0	39	0	61	101
07	Wilbur Wright	0	0	37	0	1	38
502	College of DuPage	27	53	0	278	254	612
532	College of Lake County	30	109	0	0	0	139
507	Danville Area	35	20	0	14	22	91
509	Elgin	18	12	6	0	7	43
512	Harper	0	259	172	0	0	431
540	Heartland	42	100	0	0	0	142
519	Highland	68	82	11	12	33	206
514	Illinois Central	217	208	0	0	0	425
529	Illinois Eastern	(178)	(185)	(0)	(0)	(21)	(384)
04	Frontier	19	128	0	0	21	168
01	Lincoln Trail	59	0	0	0	0	59
02	Olney Central	55	13	0	0	0	68
03	Wabash Valley	45	44	0	0	0	89
513	Illinois Valley	102	70	46	74	0	292
530	John A. Logan	12	90	0	18	0	120
539	John Wood	38	26	0	0	0	64
525	Joliet Junior	173	207	0	0	51	431
520	Kankakee	23	100	0	0	0	123
501	Kaskaskia	81	58	801	855	25	1,820
523	Kishwaukee	42	73	0	0	0	115
517	Lake Land	187	191	82	0	17	477
536	Lewis and Clark	336	0	66	557	53	1,012
526	Lincoln Land	42	12	0	6	46	106
528	McHenry County	0	109	0	0	0	109
524	Moraine Valley	35	0	669	0	28	732
527	Morton	0	0	61	0	0	61
535	Oakton	0	39	0	0	4	43
505	Parkland	29	50	0	5	84	168
515	Prairie State	37	0	0	0	0	37
521	Rend Lake	39	53	0	0	1	93
537	Richland	56	32	214	0	0	302
511	Rock Valley	8	49	0	3	46	106
506	Sauk Valley	69	170	1	0	44	284
531	Shawnee	0	36	0	0	0	36
510	South Suburban	0	0	9	68	434	511
533	Southeastern Illinois	97	0	19	32	0	148
522	Southwestern Illinois	245	76	232	0	527	1,080
534	Spoon River	16	19	0	0	1	36
504	Triton	0	42	0	0	0	42
516	Waubonsee	<u>81</u>	<u>54</u>	<u>0</u>	<u>0</u>	<u>3</u>	<u>138</u>
TOTALS		2,959	2,678	2,500	1,923	1,797	11,857
Grand Total		111,643	111,643	111,643	111,643	111,643	111,643
Percent Top Five of Grand		2.7%	2.4%	2.2%	1.7%	1.6%	10.6%

SOURCE OF DATA: ICCB Centralized Data System - Annual Course (AC) Data



Illinois Community College Board
Table B-13
STATEWIDE DUAL CREDIT ENROLLMENT BY PROGRAM (6-DIGIT CIP)
FOR FISCAL YEARS 2015-2017

CIP	COURSE NAME	2015	2016	2017	FY 2016-2017 1-Year Difference	
					Number	Percent
01.0101	Agricultural Business and Management, General	134	177	215	38	21.5%
01.0103	Agricultural Economics	74	40	41	1	2.5%
01.0106	Agricultural Business Technology	1	0	0	0	--
01.0201	Agricultural Mechanization, General	151	155	134	-21	-13.5%
01.0301	Agricultural Production Operations, General	102	139	152	13	9.4%
01.0302	Animal/Livestock Husbandry and Production	123	202	170	-32	-15.8%
01.0304	Crop Production	1	7	9	2	28.6%
01.0601	Applied Horticulture and Horticultural Business Services, General	254	238	182	-56	-23.5%
01.0602	Arboriculture (Cross to 01.0699 for IPEDS)	13	25	23	-2	-8.0%
01.0603	Ornamental Horticulture	307	284	271	-13	-4.6%
01.0604	Greenhouse Operation Management	75	29	93	64	220.7%
01.0605	Landscaping and Groundskeeping	89	44	84	40	90.9%
01.0607	Turf and Turfgrass Management	0	9	0	-9	-100.0%
01.0901	Animal Sciences, General (Moved from 02.0201)	13	24	52	28	116.7%
01.1102	Agronomy and Crop Science (Moved from 02.0402)	68	49	84	35	71.4%
01.1103	Horticultural Science (Moved from 02.0403)	109	34	101	67	197.1%
01.1201	Soil Science and Agronomy, General (Moved from 02.0501)	2	0	9	9	--
01.9994	Career Exploration.	22	22	13	-9	-40.9%
01.9997	Topics.	6	0	0	0	--
01.9998	Internships.	0	0	1	1	--
01.9999	Agriculture, Agriculture Operations, and Related Sciences, Other	5	5	8	3	60.0%
03.0101	Natural Resources/Conservation, General	0	0	1	1	--
03.0201	Natural Resources Management and Policy	0	12	2	-10	-83.3%
03.0601	Wildlife and Wildlands Science and Management	25	10	11	1	10.0%
04.0201	Architecture (BArch, BA/BS, MArch, MA/MS, PhD)	8	20	34	14	70.0%
05.0101	African Studies	1	0	0	0	--
05.0103	Asian Studies/Civilization	1	0	0	0	--
05.0107	Latin American Studies	0	3	26	23	766.7%
05.0108	Near and Middle Eastern Studies	0	1	0	-1	-100.0%
05.0201	African-American/Black Studies	98	28	25	-3	-10.7%
05.0202	American Indian/Native American Studies	0	1	0	-1	-100.0%
05.0299	Ethnic, Cultural Minority, and Gender Studies, Other	1	4	0	-4	-100.0%
09.0100	Communication, General (New)	0	1	0	-1	-100.0%
09.0101	Speech Communication and Rhetoric	0	0	158	158	--
09.0102	Mass Communication/Media Studies (Moved from 09.0403)	33	5	10	10	200.0%
09.0401	Journalism	347	287	302	15	5.2%
09.0402	Broadcast Journalism	9	4	2	-2	-50.0%
09.0701	Radio and Television	108	82	88	6	7.3%
09.0702	Digital Communication and Media/Multimedia	1	0	0	0	--
09.0799	Radio, Television, and Digital Communication, Other	0	0	7	7	--
09.0903	Advertising (Moved from 09.0201)	16	0	25	25	--
09.9998	Internships.	1	8	3	-5	-62.5%
10.0201	Photographic and Film/Video Technology/Technician and Assistant (Moved from 10.0103)	183	181	130	-51	-28.2%
10.0202	Radio and Television Broadcasting Technology/Technician (Moved from 10.0104)	21	26	6	-20	-76.9%
10.0203	Recording Arts Technology/Technician	0	1	0	-1	-100.0%
10.0301	Graphic Communications, General	36	13	7	-6	-46.2%
10.0303	Prepress/Desktop Publishing and Digital Imaging Design (Moved from 48.0212)	483	477	455	-22	-4.6%
10.0304	Animation, Interactive Tech, Video Graphics and Special Effects	222	169	333	164	97.0%
10.0305	Graphic and Printing Equipment Operator, General Production (Moved from 48.0201)	41	50	67	17	34.0%
10.9997	Topics.	0	0	1	1	--
10.9999	Communications Technologies/Technicians and Support Services, Other	19	14	22	8	57.1%
11.0101	Computer and Information Sciences, General	880	1,577	1,268	-309	-19.6%
11.0103	Information Technology	133	97	121	24	24.7%
11.0201	Computer Programming/Programmer, General	1,155	1,639	1,800	161	9.8%
11.0202	Computer Programming, Specific Applications (Moved from 521202)	87	65	107	42	64.6%
11.0203	Computer Programming, Vendor/Product Certification	139	80	108	28	35.0%
11.0301	Data Processing and Data Processing Technology/Technician	89	74	76	2	2.7%
11.0401	Information Sciences/Studies	4	0	1	1	--
11.0501	Computer Systems Analysis/Analyst (Moved from 521203)	13	10	2	-8	-80.0%
11.0601	Data Entry/Microcomputer Applications, General	285	363	436	73	20.1%
11.0602	Word Processing	24	23	28	5	21.7%
11.0801	Web Page, Digital/Multimedia and Information Resources Design	748	562	590	28	5.0%
11.0802	Data Modeling/Warehousing and Database Administration	24	11	17	6	54.5%
11.0803	Computer Graphics	51	91	139	48	52.7%
11.0901	Computer Systems Networking and Telecommunications (Moved from 521204)	1,716	1,420	1,548	128	9.0%
11.1002	System, Networking, and LAN/WAN Management/Manager	15	0	0	0	--
11.1003	Computer and Information Systems Security/Information Assurance	19	13	5	-8	-61.5%
11.1004	Web/Multimedia Management and Webmaster	155	59	71	12	20.3%
11.1099	Computer/Information Technology Services Administration and Management, Other (Moved from 521205)	73	82	76	-6	-7.3%
11.9997	Topics.	13	18	20	2	11.1%
11.9998	Internships.	1	0	0	0	--
12.0401	Cosmetology/Cosmetologist, General (Moved from 12.0403)	843	815	763	-52	-6.4%
12.0406	Make-up Artist/Specialist	3	0	0	0	--
12.0409	Aesthetics/Esthetician and Skin Care Specialist	149	155	138	-17	-11.0%
12.0412	Salon/Beauty Salon Management/Manager	295	311	274	-37	-11.9%
12.0501	Baking and Pastry Arts/Baker/Pastry Chef	7	6	62	56	933.3%
12.0503	Culinary Arts/Chef Training	313	229	502	273	119.2%



Illinois Community College Board
Table B-13
STATEWIDE DUAL CREDIT ENROLLMENT BY PROGRAM (6-DIGIT CIP)
FOR FISCAL YEARS 2015-2017

CIP	COURSE NAME	2015	2016	2017	FY 2016-2017 1-Year Difference	
					Number	Percent
12.0504	Restaurant, Culinary, and Catering Management/Manager	412	641	750	109	17.0%
12.0505	Food Preparation/Professional Cooking/Kitchen Assistant	0	54	0	-54	-100.0%
12.9994	Career Exploration.	0	0	0	0	--
12.9996	Certification/Licensure Review.	66	37	47	10	27.0%
12.9998	Internships. (1.2 only)	0	37	0	-37	-100.0%
13.0101	Education, General	116	134	122	-12	-9.0%
13.0201	Bilingual and Multilingual Education	0	0	1	1	--
13.0501	Educational/Instructional Technology	0	2	1	-1	-50.0%
13.0901	Social and Philosophical Foundations of Education	288	302	298	-4	-1.3%
13.1001	Special Education and Teaching, General	0	3	0	-3	-100.0%
13.1202	Elementary Education and Teaching	4	5	2	-3	-60.0%
13.1209	Kindergarten/Preschool Education and Teaching (Moved from 13.1204)	15	10	0	-10	-100.0%
13.1210	Early Childhood Education and Teaching (Moved from 13.1204)	108	87	84	-3	-3.4%
13.1307	Health Teacher Education	340	667	760	93	13.9%
13.1314	Physical Education Teaching and Coaching	0	0	1	1	--
13.1501	Teacher Assistant/Aide	121	134	2	-132	-98.5%
13.9997	Topics.	73	4	5	1	25.0%
13.9998	Internships.	0	10	8	-2	-20.0%
14.0101	Engineering, General	25	22	15	-7	-31.8%
14.1001	Electrical and Electronics Engineering	4	3	6	3	100.0%
14.1101	Engineering Mechanics	9	16	17	1	6.3%
14.1201	Engineering Physics	8	13	4	-9	-69.2%
14.4201	Mechatronics, Robotics, and Automation Engineering (New)	9	16	12	-4	-25.0%
15.0000	Engineering Technology, General (Moved from 15.1101)	16	40	26	-14	-35.0%
15.0101	Architectural Engineering Technology/Technician (See also 15.1303)	1	8	17	9	112.5%
15.0201	Civil Engineering Technology/Technician	0	23	15	-8	-34.8%
15.0303	Electrical, Electronic and Communications Engineering Technology/Technician	344	301	252	-49	-16.3%
15.0304	Laser and Optical Technology/Technician	22	16	10	-6	-37.5%
15.0305	Telecommunications Technology/Technician	10	0	0	0	--
15.0310	Telecommunication Electronics Technology (Cross to 15.0305 for IPEDS)	0	0	0	0	--
15.0403	Electromechanical Technology/Electromechanical Engineering Technology	0	1	3	2	200.0%
15.0405	Robotics Technology/Technician	5	14	18	4	28.6%
15.0410	Fluid Power Technology (Cross to 15.1103 for IPEDS)	2	7	1	-6	-85.7%
15.0411	Automated Manufacturing Technology (Cross to 15.0499 for IPEDS)	88	49	111	62	126.5%
15.0503	Energy Management and Systems Technology/Technician	0	2	0	-2	-100.0%
15.0612	Industrial Technology/Technician	11	0	22	22	--
15.0613	Manufacturing Technology/Technician	175	227	143	-84	-37.0%
15.0701	Occupational Safety and Health Technology/Technician	145	80	113	33	41.3%
15.0702	Quality Control Technology/Technician	78	76	110	34	44.7%
15.0703	Industrial Safety Technology/Technician	30	9	28	19	211.1%
15.0805	Mechanical Engineering/Mechanical Technology/Technician	103	126	151	25	19.8%
15.0901	Mining Technology/Technician	13	19	11	-8	-42.1%
15.1201	Computer Engineering Technology/Technician	231	204	183	-21	-10.3%
15.1203	Computer Hardware Technology/Technician	60	93	99	6	6.5%
15.1301	Drafting and Design Technology/Technician, General (Moved from 48.0101)	591	589	706	117	19.9%
15.1302	CAD/CADD Drafting and/or Design Technology/Technician	896	1,008	1,184	176	17.5%
15.1303	Architectural Drafting and Architectural CAD/CADD (Moved from 48.0102)	68	63	79	16	25.4%
15.1305	Electrical/Electronics Drafting and Electrical/Electronics CAD/CADD (Moved from 48.0104)	22	7	0	-7	-100.0%
15.1306	Mechanical Drafting and Mechanical Drafting CAD/CADD (Moved from 48.0105)	21	14	22	8	57.1%
15.1601	Nanotechnology (New)	31	34	36	2	5.9%
15.9997	Topics.	81	124	152	28	22.6%
15.9999	Engineering Technologies and Engineering-Related Fields, Other	0	30	16	-14	-46.7%
16.0103	Language Interpretation and Translation	26	6	0	-6	-100.0%
16.0301	Chinese Language and Literature	12	9	1	-8	-88.9%
16.0302	Japanese Language and Literature	1	4	0	-4	-100.0%
16.0501	German Language and Literature	134	161	178	17	10.6%
16.0901	French Language and Literature	326	267	269	2	0.7%
16.0902	Italian Language and Literature	0	0	15	15	--
16.0905	Spanish Language and Literature	4,708	4,975	5,157	182	3.7%
16.1101	Arabic Language and Literature	0	1	0	-1	-100.0%
16.1203	Latin Language and Literature	1	1	0	-1	-100.0%
16.1601	American Sign Language (ASL)	0	4	7	3	75.0%
16.1603	Sign Language Interpretation and Translation (Moved from 51.0205)	32	36	45	9	25.0%
16.9996	Certification/Licensure Review.	13	27	26	-1	-3.7%
19.0101	Family and Consumer Services/Human Services, General	0	0	930	930	--
19.0401	Family Resource Management Studies, General	0	0	1	1	--
19.0402	Consumer Economics	425	515	2	-513	-99.6%
19.0501	Food, Nutrition , and Wellness Studies, General	7	8	2	-6	-75.0%
19.0504	Human Nutrition	91	116	138	22	19.0%
19.0706	Child Development	0	10	14	4	40.0%
19.0708	Child Care and Support Services Management	0	2	1	-1	-50.0%
19.0709	Child Care Provider/Assistant (Moved from 20.0202)	582	531	512	-19	-3.6%
19.0901	Apparel and Textiles, General	68	61	44	-17	-27.9%
19.0902	Apparel and Textile Manufacture	17	7	22	15	214.3%
19.9997	Topics.	29	0	23	23	--
19.9998	Internships.	5	5	2	-3	-60.0%
22.0302	Legal Assistant/Paralegal (Moved from 22.0103)	0	2	2	0	0.0%



Illinois Community College Board
Table B-13
STATEWIDE DUAL CREDIT ENROLLMENT BY PROGRAM (6-DIGIT CIP)
FOR FISCAL YEARS 2015-2017

CIP	COURSE NAME	2015	2016	2017	FY 2016-2017 1-Year Difference	
					Number	Percent
23.0101	English Language and Literature, General	193	268	241	-27	-10.1%
23.1301	Writing, General (New)	15,575	16,671	17,278	607	3.6%
23.1302	Creative Writing (Moved from 23.0501)	33	24	45	21	87.5%
23.1303	Professional, Technical, Business, and Scientific Writing (Moved from 23.1101)	49	85	101	16	18.8%
23.1304	Rhetoric and Composition (New) (Moved from 23.1001)	3,541	3,710	3,967	257	6.9%
23.1402	American Literature (United States) (Moved from 23.0701)	459	531	567	36	6.8%
23.1404	English Literature (British and Commonwealth) (Moved from 23.0801)	31	189	103	-86	-45.5%
23.9997	Topics.	24	0	24	24	--
24.0102	General Studies [Curriculum designation for AGS, AGE, and ALS (general associate) degree curricula]	1,167	926	966	40	4.3%
24.0103	Humanities/Humanistic Studies	245	459	355	-104	-22.7%
24.0105	Orientation Courses (Cross to dedicated CIP for IPEDS)	900	1,060	1,087	27	2.5%
24.0197	Critical Thinking, Analytic Thinking, Methods of Inquiry and/or Practical Thinking	0	0	1	1	--
24.0198	Internships.	48	44	115	71	161.4%
24.0199	Liberal Arts and Sciences, General Studies and Humanities, Other	0	2	3	1	50.0%
24.9997	Topics. (1.2 only)	17	54	0	-54	-100.0%
26.0101	Biology/Biological Sciences, General	1,764	2,549	2,656	107	4.2%
26.0301	Botany/Plant Biology	8	13	9	-4	-30.8%
26.0403	Anatomy (Moved from 26.0601)	942	1,006	1,332	326	32.4%
26.0502	Microbiology, General	34	36	53	17	47.2%
26.0701	Zoology/Animal Biology	13	17	97	80	470.6%
26.0801	Genetics, General	4	3	5	2	66.7%
26.1001	Pharmacology (Moved from 26.0705)	20	30	32	2	6.7%
26.1301	Ecology (Moved from 26.0603)	132	75	175	100	133.3%
26.1302	Marine Biology and Biological Oceanography (Moved from 26.0607)	109	103	99	-4	-3.9%
26.1305	Environmental Biology	513	310	323	13	4.2%
26.9997	Topics.	2	0	0	0	--
27.0101	Mathematics, General	5,478	6,454	6,674	220	3.4%
27.0103	Analysis and Functional Analysis	67	58	69	11	19.0%
27.0199	Mathematics, Other	2	0	0	0	--
27.0301	Applied Mathematics	1,145	1,292	1,162	-130	-10.1%
27.0501	Statistics, General	1,407	1,724	1,967	243	14.1%
27.9997	Topics.	0	0	1	1	--
30.0101	Biological and Physical Sciences	59	77	95	18	23.4%
30.0197	Nutrition Sciences	0	0	18	18	--
31.0101	Parks, Recreation, and Leisure Studies	1	0	3	3	--
31.0501	Health and Physical Education	2,384	2,456	2,887	431	17.5%
31.0504	Sport and Fitness Administration/ Management	4	7	1	-6	-85.7%
32.0107	Career Exploration/Awareness Skills	0	0	16	16	--
38.0101	Philosophy	175	272	290	18	6.6%
38.0102	Logic	96	150	108	-42	-28.0%
38.0103	Ethics	103	178	178	0	0.0%
38.0201	Religion/Religious Studies	114	144	256	112	77.8%
40.0101	Physical Sciences	10	37	15	-22	-59.5%
40.0201	Astronomy	87	153	124	-29	-19.0%
40.0401	Atmospheric Sciences and Meteorology, General	8	7	20	13	185.7%
40.0501	Chemistry, General	764	842	749	-93	-11.0%
40.0503	Inorganic Chemistry	256	219	259	40	18.3%
40.0504	Organic Chemistry	18	24	29	5	20.8%
40.0599	Chemistry, Other	16	22	11	-11	-50.0%
40.0601	Geology/Earth Science, General	543	587	639	52	8.9%
40.0607	Oceanography, Chemical and Physical (Moved from 40.0702)	58	38	64	26	68.4%
40.0801	Physics, General	544	607	512	-95	-15.7%
42.0101	Psychology, General	3,851	3,047	3,404	357	11.7%
42.2701	Cognitive Psychology and Psycholinguistics (Moved from 42.0301)	34	74	52	-22	-29.7%
42.2703	Developmental and Child Psychology (Moved from 42.0701)	376	412	335	-77	-18.7%
42.2707	Social Psychology (Moved from 42.1601)	14	25	77	52	208.0%
42.2806	Educational Psychology (Moved from 42.1801)	3	10	7	-3	-30.0%
43.0102	Corrections	174	111	159	48	43.2%
43.0103	Criminal Justice/Law Enforcement Administration	386	267	443	176	65.9%
43.0104	Criminal Justice/Safety Studies	203	236	294	58	24.6%
43.0106	Forensic Science and Technology	5	1	52	51	5100.0%
43.0107	Criminal Justice/Police Science	798	1,089	653	-436	-40.0%
43.0199	Corrections and Criminal Justice, Other	0	1	45	44	4400.0%
43.0201	Fire Protection and Safety Technology/Technician	140	107	100	-7	-6.5%
43.0202	Fire Services Administration	17	10	16	6	60.0%
43.0203	Fire Science/Fire-fighting	397	500	403	-97	-19.4%
43.0301	Homeland Security (New)	1	1	3	2	200.0%
43.9994	Career Exploration.	127	114	101	-13	-11.4%
43.9997	Topics.	38	11	5	-6	-54.5%
43.9998	Internship.	12	5	18	13	260.0%
44.0701	Social Work (Cross to 44.9999 for IPEDS)	1	0	1	1	--
45.0101	Social Sciences, General	123	130	25	-105	-80.8%
45.0201	Anthropology	24	116	37	-79	-68.1%
45.0301	Archeology	0	0	1	1	--
45.0401	Criminology	36	118	26	-92	-78.0%
45.0501	Demography and Population Studies	0	20	23	3	15.0%
45.0601	Economics, General	500	498	518	20	4.0%



Illinois Community College Board
Table B-13
STATEWIDE DUAL CREDIT ENROLLMENT BY PROGRAM (6-DIGIT CIP)
FOR FISCAL YEARS 2015-2017

CIP	COURSE NAME	2015	2016	2017	FY 2016-2017 1-Year Difference	
					Number	Percent
45.0701	Geography	159	96	147	51	53.1%
45.0901	International Relations and Affairs	93	31	9	-22	-71.0%
45.1001	Political Science and Government, General	1,813	1,212	1,244	32	2.6%
45.1101	Sociology	1,211	1,131	1,099	-32	-2.8%
45.9997	Topics.	9	20	5	-15	-75.0%
46.0000	Construction Trades, General	0	22	35	13	59.1%
46.0201	Carpentry/Carpenter	459	433	500	67	15.5%
46.0299	Carpenter/Construction, Other.	52	58	66	8	13.8%
46.0302	Electrician	2	10	30	20	200.0%
46.0401	Building/Property Management	32	62	79	17	27.4%
46.0403	Building Home/Construction Inspection/Inspector	6	1	11	10	1000.0%
47.0103	Communication Systems Installation and Repair Technology	8	36	9	-27	-75.0%
47.0104	Computer Installation and Repair Technology/Technician	441	417	530	113	27.1%
47.0105	Industrial Electronics Technology/Technician	0	12	27	15	125.0%
47.0199	Electrical/Electronics Maintenance and Repair Technology/Other	93	68	60	-8	-11.8%
47.0201	Heating, AC, Ventilation and Refrigeration Maintenance Tech (HAC, HACR, HVAC, HVACR)	40	44	38	-6	-13.6%
47.0303	Industrial Mechanics and Maintenance Technology	22	15	10	-5	-33.3%
47.0603	Autobody/Collision and Repair Technology/Technician	418	297	245	-52	-17.5%
47.0604	Automobile/Automotive Mechanics Technology/Technician	1,539	1,528	1,664	136	8.9%
47.0605	Diesel Mechanics Technology/Technician	58	88	58	-30	-34.1%
47.0606	Small Engine Mechanics and Repair Technology/Technician	71	25	37	12	48.0%
47.0609	Avionics Maintenance Technology/Technician	15	36	0	-36	-100.0%
47.9996	Certification/Licensure Review.	0	1	0	-1	-100.0%
47.9997	Topics. (1.2 only)	24	16	36	20	125.0%
47.9999	Mechanic and Repair Technologies/Technicians, Other	0	21	21	0	0.0%
48.0501	Machine Tool Technology/Machinist	32	54	71	17	31.5%
48.0503	Machine Shop Technology/Assistant	668	835	708	-127	-15.2%
48.0508	Welding Technology/Welder	2,728	2,777	2,959	182	6.6%
48.0520	Numerical Control (NOT CNC) (Cross to 48.0599 for IPEDS)	38	43	47	4	9.3%
48.0702	Furniture Design and Manufacturing	0	2	0	-2	-100.0%
48.9995	Supervised Independent Study. (1.2 only)	8	0	11	11	--
48.9997	Topics. (1.2 only)	8	8	12	4	50.0%
49.0102	Airline/Commercial/Professional Pilot and Flight Crew	11	9	12	3	33.3%
49.0107	Aircraft Pilot (Private) (moved to 36.0119)	15	18	15	-3	-16.7%
50.0101	Visual and Performing Arts, General	11	25	17	-8	-32.0%
50.0201	Crafts/Craft Design, Folk Art and Artisanry	0	0	6	6	--
50.0301	Dance, General	1	0	0	0	--
50.0302	Ballet	1	0	0	0	--
50.0401	Design and Visual Communications, General	307	459	458	-1	-0.2%
50.0402	Commercial and Advertising Art	0	0	8	8	--
50.0406	Commercial Photography	522	641	939	298	46.5%
50.0409	Graphic Design	0	1	0	-1	-100.0%
50.0501	Drama and Dramatics/Theatre Arts, General.	103	99	157	58	58.6%
50.0502	Technical Theatre/Theatre Design and Technology	1	1	1	0	0.0%
50.0506	Acting	9	49	25	-24	-49.0%
50.0599	Dramatic/Theatre Arts and Stagecraft, Other	1	0	3	3	--
50.0601	Film/Cinema Studies	5	12	6	-6	-50.0%
50.0602	Cinematography and Film/Video Production	165	176	145	-31	-17.6%
50.0605	Photography	8	13	184	171	1315.4%
50.0701	Art/Art Studies, General	289	442	472	30	6.8%
50.0703	Art History, Criticism and Conservation	164	141	101	-40	-28.4%
50.0705	Drawing	49	21	29	8	38.1%
50.0708	Painting	0	0	1	1	--
50.0709	Sculpture	0	1	0	-1	-100.0%
50.0711	Ceramic Arts and Ceramics	1	10	62	52	520.0%
50.0901	Music, General	3	5	5	0	0.0%
50.0902	Music History, Literature and Theory	645	770	984	214	27.8%
50.0903	Music Performance, General	150	154	205	51	33.1%
50.0904	Music Theory and Composition	56	56	87	31	55.4%
50.9997	Topics.	8	21	23	2	9.5%
51.0000	Health Services/Allied Health/Health Sciences, General	316	424	397	-27	-6.4%
51.0001	Health and Wellness, General (New)	0	0	9	9	--
51.0707	Health Information/Medical Records Technology/Technician	476	446	367	-79	-17.7%
51.0708	Medical Transcription/Transcriptionist	43	60	97	37	61.7%
51.0710	Medical Office Assistant/Specialist	1,297	1,423	1,692	269	18.9%
51.0801	Medical/Clinical Assistant	43	60	68	8	13.3%
51.0805	Pharmacy Technician/Assistant.	4	2	0	-2	-100.0%
51.0808	Veterinary/Animal Health Technology/Technician and Veterinary Assistant	0	0	71	71	--
51.0810	Emergency Care Attendant (EMT Ambulance)	269	229	211	-18	-7.9%
51.0902	Electrocardiograph Technology/Technician	0	0	1	1	--
51.0904	Emergency Medical Technology/Technician (EMT Paramedic)	182	217	323	106	48.8%
51.0907	Medical Radiologic Technology/Science – Radiation Therapist	0	1	0	-1	-100.0%
51.0908	Respiratory Care Therapy/Therapist	26	40	58	18	45.0%
51.0913	Athletic Training/Trainer	1	2	0	-2	-100.0%
51.1004	Clinical/Medical Laboratory Technician	2	1	17	16	1600.0%
51.2201	Public Health, General.	47	6	1	-5	-83.3%
51.3104	Dietician Assistant (Moved from 20.0404)	36	35	26	-9	-25.7%



Illinois Community College Board
Table B-13
STATEWIDE DUAL CREDIT ENROLLMENT BY PROGRAM (6-DIGIT CIP)
FOR FISCAL YEARS 2015-2017

CIP	COURSE NAME	2015	2016	2017	FY 2016-2017 1-Year Difference	
					Number	Percent
51.3801	Registered Nursing/Registered Nurse (Moved from 51.1601)	43	0	0	0	--
51.3812	Perioperative/Operating Room and Surgical Nurse/Nursing (Moved from 51.1612)	0	1	0	-1	-100.0%
51.3901	Licensed Practical/Vocational Nursing and Nursing Assistant, Other (New)	12	11	20	9	81.8%
51.3902	Nursing Assistant/Aide and Patient Care Assistant/Aide (Moved from 51.1614)	2,264	2,301	2,678	377	16.4%
51.9994	Career Exploration.	326	385	410	25	6.5%
51.9995	Supervised Independent Study.	0	10	0	-10	-100.0%
51.9997	Topics. (1.2 only)	0	23	23	0	0.0%
51.9998	Internships. (1.2 only)	6	6	13	7	116.7%
51.9999	Health Professions and Related Clinical Sciences, Other	372	354	375	21	5.9%
52.0101	Business/Commerce, General	657	765	811	46	6.0%
52.0201	Business Administration and Management, General	62	82	96	14	17.1%
52.0203	Logistics, Materials, and Supply Chain Management	0	0	23	23	--
52.0301	Accounting	502	390	316	-74	-19.0%
52.0302	Accounting Technology/Technician and Bookkeeping	652	771	693	-78	-10.1%
52.0401	Administrative Assistant and Secretarial Science, General	1,391	1,193	1,204	11	0.9%
52.0407	Business/Office Automation/Technology/Data Entry	2,686	2,475	2,500	25	1.0%
52.0408	General Office Occupations and Clerical Services	2,172	2,481	1,923	-558	-22.5%
52.0409	Parts, Warehousing, and Inventory Management Operations	31	3	0	-3	-100.0%
52.0411	Customer Service Support/Call Center/Teleservice Operation	3	24	11	-13	-54.2%
52.0701	Entrepreneurship/Entrepreneurial Studies	345	506	775	269	53.2%
52.0703	Small Business Administration/Management	47	86	115	29	33.7%
52.0801	Finance, General	54	32	32	0	0.0%
52.0803	Banking and Financial Support Services	14	1	22	21	2100.0%
52.0807	Investments and Securities (Cross to 52.0899 for IPEDS)	5	15	5	-10	-66.7%
52.0904	Hotel/Motel Administration/Management	0	0	20	20	--
52.0905	Restaurant/Food Services Management	34	21	0	-21	-100.0%
52.1001	Human Resources Management/Personnel Administration, General	0	1	0	-1	-100.0%
52.1003	Organizational Behavior Studies	7	28	1	-27	-96.4%
52.1101	International Business/Trade/Commerce (Cross to 52.9999 for IPEDS)	2	9	9	0	0.0%
52.1401	Marketing/Marketing Management, General	175	229	331	102	44.5%
52.1402	Marketing Research	15	19	27	8	42.1%
52.1803	Retailing and Retail Operations (Moved from 08.0705)	0	17	0	-17	-100.0%
52.1804	Selling Skills and Sales Operations (Moved from 08.0706)	3	18	7	-11	-61.1%
52.1902	Fashion Merchandising	38	66	61	-5	-7.6%
52.1909	Special Products Marketing Operations	0	0	1	1	--
52.2001	Construction Management	0	1	0	-1	-100.0%
52.9994	Career Exploration.	289	168	229	61	36.3%
52.9995	Supervised Independent Study. (1.2 only)	0	0	1	1	--
52.9996	Certification/Licensure Review.	0	0	16	16	--
52.9997	Topics.	10	55	78	23	41.8%
52.9998	Internships.	19	10	17	7	70.0%
52.9999	Business, Management, Marketing, and Related Supportive Services, Other	4	5	2	-3	-60.0%
54.0101	History, General (Moved from 45.0801)	799	729	702	-27	-3.7%
54.0102	American History (United States) (Moved from 45.0802)	2,952	3,409	3,860	451	13.2%
54.0103	European History	0	1	0	-1	-100.0%
54.0106	Asian History	9	15	33	18	120.0%
54.9996	Certification/Licensure Review.	51	71	25	-46	-64.8%
TOTALS		99,343	105,361	111,643	6,282	6.0%
Pure						
Minimum		0	0	0	0	--
Maximum		15,575	16,671	17,278	607	3.6%
Median		24	25	28	3	12.0%
Standard Deviation		1,024	1,095	1,142	47	4.3%
Average		280	297	314	18	6.0%

Includes only Transfer courses and Career and Technical Education courses
SOURCE OF DATA: ICCB Centralized Data System - Annual Course (AC) Data



Illinois Community College Board
Table B-14
STATEWIDE DUAL CREDIT ENROLLMENT BY PROGRAM (2-DIGIT CIP)
FOR FISCAL YEARS 2015-2017

CIP	COURSE NAME	2015	2016	2017	FY 2016-2017 1-Year Difference	
					Number	Percent
01.	Agriculture, Agriculture Operations, and Related Sciences	1,549	1,483	1,642	159	10.7%
03.	Natural Resources and Conservation	25	22	14	-8	-36.4%
04.	Architecture and Related Services	8	20	34	14	70.0%
05.	Area, Ethnic, Cultural, Gender, and Group Studies	101	37	51	14	37.8%
09.	Communication, Journalism and Related Programs	515	387	600	213	55.0%
10.	Communications, Technologies/Technicians and Support Services	1,005	931	1,021	90	9.7%
11.	Computer and Information Sciences and Support Services	5,624	6,184	6,413	229	3.7%
12.	Personal and Culinary Services	2,088	2,285	2,536	251	11.0%
13.	Education	1,065	1,358	1,284	-74	-5.4%
14.	Engineering	55	70	54	-16	-22.9%
15.	Engineering Technologies and Engineering-Related Fields	3,044	3,164	3,508	344	10.9%
16.	Foreign Languages, Literatures, and Linguistics	5,253	5,491	5,698	207	3.8%
19.	Family and Consumer Sciences/Human Sciences	1,224	1,255	1,691	436	34.7%
22.	Legal Professions and Studies	0	2	2	0	0.0%
23.	English Language and Literature/Letters	19,905	21,478	22,326	848	3.9%
24.	Liberal Arts and Sciences, General Studies and Humanities	2,377	2,545	2,527	-18	-0.7%
26.	Biological and Biomedical Sciences	3,541	4,142	4,781	639	15.4%
27.	Mathematics and Statistics	8,099	9,528	9,873	345	3.6%
30.	Multi/Interdisciplinary Studies	59	77	113	36	46.8%
31.	Parks, Recreation, Leisure and Fitness Studies	2,389	2,463	2,891	428	17.4%
32.	Basic Skills and Developmental/Remedial Education	0	0	16	16	--
38.	Philosophy and Religious Studies	488	744	832	88	11.8%
40.	Physical Sciences	2,304	2,536	2,422	-114	-4.5%
42.	Psychology	4,278	3,568	3,875	307	8.6%
43.	Homeland Security, Law Enforcement, Firefighting and Related Protective Services	2,298	2,453	2,292	-161	-6.6%
44.	Public Administration and Social Services Professions	1	0	1	1	--
45.	Social Sciences	3,968	3,372	3,134	-238	-7.1%
46.	Construction Trades	551	586	721	135	23.0%
47.	Mechanics and Repair Technologies/Technicians	2,729	2,604	2,735	131	5.0%
48.	Precision Production	3,482	3,719	3,808	89	2.4%
49.	Transportation and Materials Moving	26	27	27	0	0.0%
50.	Visual and Performing Arts	2,499	3,097	3,918	821	26.5%
51.	Health Professions and Related Programs	5,765	6,037	6,857	820	13.6%
52.	Business Management, Marketing, and Related Supportive Services	9,217	9,471	9,326	-145	-1.5%
54.	History	3,811	4,225	4,620	395	9.3%
TOTALS		99,343	105,361	111,643	6,282	6.0%
Pure						
Minimum		0	0	1	-238	-36.4%
Maximum		19,905	21,478	22,326	848	70.0%
Median		2,298	2,453	2,422	90	8.6%
Standard Deviation		3,783	4,082	4,229	278	20.8%
Average		2,838	3,010	3,190	179	10.6%

Includes only Transfer courses and Career and Technical Education courses
SOURCE OF DATA: ICCB Centralized Data System - Annual Course (AC) Data



Illinois Community College Board
Table B-15
STATEWIDE DUAL CREDIT ENROLLMENT BY CAREER CLUSTER
FOR FISCAL YEARS 2015-2017

Career Clusters					FY 2016-2017 1-Year Difference	
<u>Code</u>	<u>Title</u>	<u>2015</u>	<u>2016</u>	<u>2017</u>	<u>Number</u>	<u>Percent</u>
1	Agriculture, Food & Natural Resources	1,480	1,457	1,581	124	8.5%
2	Architecture & Construction	659	710	860	150	21.1%
3	Arts, A/V Technology & Communications	23,184	24,898	26,858	1,960	7.9%
4	Business Management & Administration	7,712	8,039	7,909	-130	-1.6%
5	Education & Training	11,364	12,512	13,487	975	7.8%
6	Finance	1,227	1,209	1,068	-141	-11.7%
7	Government & Public Administration	2,081	1,332	1,394	62	4.7%
8	Health Science	4,843	4,959	5,779	820	16.5%
9	Hospitality & Tourism	767	951	1,337	386	40.6%
10	Human Services	6,148	5,382	5,564	182	3.4%
11	Information Technology	5,228	5,698	5,853	155	2.7%
12	Law, Public Safety, Corrections & Security	2,121	2,325	2,170	-155	-6.7%
13	Manufacturing	6,630	6,934	7,411	477	6.9%
14	Marketing	247	349	452	103	29.5%
15	Science, Technology, Engineering & Mathematics	20,070	22,840	23,880	1,040	4.6%
16	Transportation, Distribution & Logistics	2,112	1,983	2,039	56	2.8%
17	Unknown	<u>3,470</u>	<u>3,783</u>	<u>4,001</u>	<u>218</u>	<u>5.8%</u>
	TOTALS	99,343	105,361	111,643	6,282	6.0%
	Pure					
	Minimum	247	349	452	-155	-11.7%
	Maximum	23,184	24,898	26,858	1,960	40.6%
	Median	3,470	3,783	4,001	155	5.8%
	Standard Deviation	6,666.3	7,392.6	7,864.5	549.0	12.7%
	Average	5,844	6,198	6,567	370	8.4%

Includes only Transfer courses and Career and Technical Education courses

The Career Clusters brand is a registered trademark of Advance CTE

SOURCE OF DATA: ICCB Centralized Data System - Annual Course (AC) Data



Illinois Community College Board
Table B-16
DUAL CREDIT ENROLLMENT BY INSTRUCTIONAL SITE AND BY COLLEGE
FISCAL YEAR 2017

Dist. No.	District/College	Main College Campus	High School Campus	Off Campus College Facility	Online/ Internet	Distance Learning	Other/ Unknown Location	Total
503	Black Hawk	27	2,652	383	158	0	8	3,228
518	Carl Sandburg	190	1,129	109	125	0	0	1,553
508	City Colleges of Chicago	(481)	(0)	(2,351)	(0)	(0)	(367)	(3,199)
02	Harold Washington	17	0	53	0	0	22	92
04	Harry S Truman	54	0	191	0	0	38	283
01	Kennedy-King	11	0	202	0	0	8	221
03	Malcolm X	22	0	363	0	0	4	389
05	Olive-Harvey	51	0	214	0	0	284	549
06	Richard J. Daley	286	0	767	0	0	4	1,057
07	Wilbur Wright	40	0	561	0	0	7	608
502	College of DuPage	0	5,598	2,250	0	0	421	8,269
532	College of Lake County	315	1,330	0	55	0	268	1,968
507	Danville Area	1,792	586	114	0	0	20	2,512
509	Elgin	246	0	0	0	0	16	262
512	Harper	378	5,112	0	0	0	0	5,490
540	Heartland	41	1,559	0	13	1	0	1,614
519	Highland	172	1,125	0	0	0	434	1,731
514	Illinois Central	214	3,616	0	727	0	69	4,626
529	Illinois Eastern	(16)	(4,744)	(15)	(0)	(0)	(101)	(4,876)
04	Frontier	0	2,494	0	0	0	101	2,595
01	Lincoln Trail	0	513	15	0	0	0	528
02	Olney Central	16	750	0	0	0	0	766
03	Wabash Valley	0	987	0	0	0	0	987
513	Illinois Valley	0	1,658	0	47	0	0	1,705
530	John A. Logan	23	1,890	83	0	0	0	1,996
539	John Wood	0	459	105	18	0	15	597
525	Joliet Junior	0	6,183	0	0	0	0	6,183
520	Kankakee	0	16	0	0	0	900	916
501	Kaskaskia	121	6,394	0	8	0	194	6,717
523	Kishwaukee	427	422	0	0	0	0	849
517	Lake Land	0	3,958	0	0	0	0	3,958
536	Lewis and Clark	0	9,103	0	0	0	0	9,103
526	Lincoln Land	0	2,955	0	0	0	545	3,500
528	McHenry County	175	2,125	0	0	0	0	2,300
524	Moraine Valley	0	3,356	0	0	0	0	3,356
527	Morton	0	623	0	0	0	0	623
535	Oakton	0	916	0	0	0	109	1,025
505	Parkland	300	1,738	153	152	0	2	2,345
515	Prairie State	0	647	0	0	0	0	647
521	Rend Lake	185	2,779	236	177	0	0	3,377
537	Richland	919	835	100	22	0	0	1,876
511	Rock Valley	2,994	138	150	95	3	0	3,380
506	Sauk Valley	308	1,370	0	209	0	0	1,887
531	Shawnee	0	870	0	0	0	0	870
510	South Suburban	0	1,188	0	0	0	0	1,188
533	Southeastern Illinois	154	1,018	0	266	34	30	1,502
522	Southwestern Illinois	2,369	3,624	189	38	0	1	6,221
534	Spoon River	35	283	133	167	4	4	626
504	Triton	97	1,154	0	3	0	0	1,254
516	Waubensee	<u>289</u>	<u>3,194</u>	<u>776</u>	<u>55</u>	<u>0</u>	<u>0</u>	<u>4,314</u>
TOTALS		12,268	86,347	7,147	2,335	42	3,504	111,643

SOURCE OF DATA: ICCB Centralized Data System - Annual Course (AC) Data



Illinois Community College Board
Table C-1
FISCAL YEAR 2016 GRADUATING DUAL CREDIT STUDENTS
ENROLLING IN THE SAME COMMUNITY COLLEGE IN FISCAL YEAR 2017

Dist. No.	District/College	FY 16 All HS Students Enrolled in DC	FY 16 HS Seniors Enrolled in DC	FY 16 HS DC Seniors Enrolling in Same Institution in FY 17		Of FY 16 HS DC Seniors Enrolling in Same Institution, Students Taking at Least One Remedial Course*	
				Number	Percent	Number	Percent
503	Black Hawk	1,271	988	313	31.7%	125	39.9%
518	Carl Sandburg	434	323	73	22.6%	16	21.9%
508	City Colleges of Chicago	(2,736)	(2,496)	(221)	(8.9%)	(69)	(31.2%)
02	Harold Washington	388	348	33	9.5%	11	33.3%
04	Harry S Truman	353	338	26	7.7%	10	38.5%
01	Kennedy-King	173	167	7	4.2%	4	57.1%
03	Malcolm X	217	193	16	8.3%	5	31.3%
05	Olive-Harvey	300	287	14	4.9%	4	28.6%
06	Richard J. Daley	628	567	28	4.9%	14	50.0%
07	Wilbur Wright	677	596	97	16.3%	21	21.6%
502	College of DuPage	5,248	4,734	636	13.4%	212	33.3%
532	College of Lake County	1,217	1,001	246	24.6%	139	56.5%
507	Danville Area	1,588	1,289	570	44.2%	65	11.4%
509	Elgin	973	951	573	60.3%	89	15.5%
512	Harper	3,056	2,678	572	21.4%	63	11.0%
540	Heartland	774	595	169	28.4%	74	43.8%
519	Highland	973	708	132	18.6%	67	50.8%
514	Illinois Central	1,665	1,357	494	36.4%	67	13.6%
529	Illinois Eastern	(1,334)	(879)	(251)	(28.6%)	(15)	(6.0%)
04	Frontier	621	419	59	14.1%	8	13.6%
01	Lincoln Trail	203	125	57	45.6%	3	5.3%
02	Olney Central	235	153	76	49.7%	2	2.6%
03	Wabash Valley	275	182	59	32.4%	2	3.4%
513	Illinois Valley	517	395	148	37.5%	40	27.0%
530	John A. Logan	943	661	211	31.9%	45	21.3%
539	John Wood	303	247	64	25.9%	5	7.8%
525	Joliet Junior	3,029	2,731	727	26.6%	258	35.5%
520	Kankakee	606	417	26	6.2%	7	26.9%
501	Kaskaskia	2,889	1,807	410	22.7%	122	29.8%
523	Kishwaukee	533	459	121	26.4%	41	33.9%
517	Lake Land	1,508	1,172	415	35.4%	144	34.7%
536	Lewis and Clark	3,919	2,704	297	11.0%	52	17.5%
526	Lincoln Land	1,784	1,468	286	19.5%	106	37.1%
528	McHenry County	1,337	1,285	200	15.6%	45	22.5%
524	Moraine Valley	1,957	1,723	240	13.9%	126	52.5%
527	Morton	146	139	32	23.0%	22	68.8%
535	Oakton	750	710	131	18.5%	65	49.6%
505	Parkland	1,146	965	331	34.3%	135	40.8%
515	Prairie State	864	825	122	14.8%	67	54.9%
521	Rend Lake	1,049	687	300	43.7%	43	14.3%
537	Richland	940	740	207	28.0%	64	30.9%
511	Rock Valley	650	504	163	32.3%	14	8.6%
506	Sauk Valley	690	556	175	31.5%	63	36.0%
531	Shawnee	510	339	156	46.0%	35	22.4%
510	South Suburban	873	846	78	9.2%	45	57.7%
533	Southeastern Illinois	675	488	176	36.1%	49	27.8%
522	Southwestern Illinois	2,774	2,315	451	19.5%	198	43.9%
534	Spoon River	295	237	77	32.5%	16	20.8%
504	Triton	735	644	117	18.2%	75	64.1%
516	Waubonsee	<u>2,180</u>	<u>1,894</u>	<u>422</u>	<u>22.3%</u>	<u>142</u>	<u>33.6%</u>
TOTALS		54,871	44,957	10,333	23.0%	3,025	29.3%

*Data are a subgroup to FY 16 HS DC Seniors Enrolling in Same Institution in FY 17

SOURCE OF DATA: ICCB Centralized Data System - Annual Enrollment and Completion (A1) Data