

**Illinois Community College Board**

**Dual Credit in the Illinois Community  
College System**

**Fiscal Year 2016**

Illinois Community College Board  
401 East Capitol Avenue  
Springfield, Illinois 62701-1711  
Voice: (217) 785-0123  
Fax: (217) 524-4981  
[www.iccb.org](http://www.iccb.org)

October 2017

Compiled by ICCB Research & Policy Studies

Nathan R. Wilson, Senior Director

Jay Brooks, Director

Michelle Dufour, Associate Director

Jana Ferguson, Associate Director

**TABLE OF CONTENTS**

Introduction .....	1
Dual Credit Definition and Illinois Legislative Background .....	2
Characteristics of Dual Credit Students (unduplicated).....	2
OVERALL HEADCOUNT .....	2
GENDER AND RACIAL/ETHNICITY CHARACTERISTICS .....	3
CREDIT HOURS ENROLLED BY DUAL CREDIT STUDENTS .....	4
GEOGRAPHIC REGION .....	4
Dual Credit Course Count and Enrollment (duplicated) .....	5
OVERALL COURSE COUNT AND ENROLLMENT .....	5
BACCALAUREATE/TRANSFER .....	7
CAREER AND TECHNICAL EDUCATION .....	8
Matriculation of Dual Credit Students to Illinois Community Colleges .....	10
Bibliography .....	11
Appendix A.....	12
Appendix B.....	12
Appendix C.....	12
Appendix D.....	13

### Introduction

Dual credit instruction allows academically prepared high school students to simultaneously earn credits that count toward a high school diploma and a college degree. Dual credit instruction delivers a “win-win” arrangement for all parties: students gain access to challenging college-level coursework to make their junior and senior years of high school more productive; students can prove to others and themselves that they have the ability to succeed in college; college costs can be reduced for parents and students; time to degree at college can be shortened; and the enhanced high school and college faculty dialogue can contribute to a better alignment between secondary and postsecondary education. Consequently, as dual credit instruction has a positive impact on postsecondary completion, there is a growing emphasis among policy makers on the value of dual credit enrollment for all students and especially those who are traditionally underserved in higher education.

The recent figures for dual credit document the importance of this growing phenomenon:

- ❖ Nationally, over 1.4 million high school students took over 2 million college courses from postsecondary institutions in the 2010-11 school year. This represents 10 percent of high school students, mostly juniors and seniors. Nearly 15,000 public high schools (82 percent) offered dual credit courses in the 2010-2011 school year. Dual enrollment had an annual growth rate of over seven percent from the 2002-03 school year to the 2010-11 school year and even higher growth rates were seen in high schools where a majority of students are ethnic or racial minorities (12 percent) and in rural schools (12 percent). About thirty percent of enrollments were in courses with a career and technical/vocational focus. (<http://www.nacep.org/research-policy/fast-facts/>). Every three out of four students (74.5 percent) who had started high school in fall 2009 enrolled in a postsecondary institution in fall 2013. Every nine out of ten students (90.7 percent) who had started high school in fall 2009 and had taken college course(s) at one point in high school enrolled in a postsecondary institution in fall 2013. (<https://nces.ed.gov/pubs2016/2016014.pdf>) Therefore, students who took college course(s) in high school are more likely to enroll in a postsecondary institution than those who did not take college course(s) in high school.
- ❖ **In Illinois, during fiscal year 2016, a total of 54,871 individual (i.e., “unduplicated”) high school students enrolled in one or more community college dual credit courses.** Illinois community colleges offered a total of 10,740 dual credit courses in fiscal year 2016, which was an increase of 7.6 percent from the previous year (N = 9,986). Nearly one out of ten students (9.2 percent) taking one or more Illinois community college credit courses was a high school student. Overall, in fiscal year 2016, dual credit duplicated enrollment (N = 105,361) increased 6.1 percent compared to one year ago (N = 99,343).

Data for this report derive from the Illinois Community College Board’s (ICCB) student-level Annual Student Enrollment and Completion (A1) submission (Appendix A Tables) and Annual Course Data (AC) submission (Appendix B Tables) from Illinois community colleges. Information from the **A1 submission** is used in the report to describe the characteristics of high school students who enrolled in dual credit courses. A1 data are required for all students who are officially enrolled in a credit course at an Illinois community college any time during the specified fiscal year. A1 enrollments are **unduplicated** end of year counts. Duplicated enrollment and course data derive from ICCB **AC submissions**. AC enrollments

## Dual Credit in the Illinois Community College System

are **duplicated** meaning students are counted for each course they enroll in (e.g., a student enrolling in three dual credit courses is counted as three enrollments). The AC record submission includes dual credit identifier information that is used to generate dual credit course enrollments and average class sizes.

### Dual Credit Definition and Illinois Legislative Background

Dual credit is an instructional arrangement where an academically qualified high school student enrolls in a college-level course and, upon successful course completion, concurrently earns both college credit and high school credit. Dual credit reflects strong and well established secondary-to-postsecondary articulation and alignment.

The Dual Credit Quality Act (Public Act 96-0194) was approved by the Governor on August 10, 2009 with an effective date of January 1, 2010. The Act requires the Illinois Community College Board (ICCB) and the Board of Higher Education (IBHE) to develop policies regarding dual credit. Dual credit instructors teaching credit, college-level courses must meet the same requirements as on-campus faculty, and dual credit instructors teaching career and technical education courses must have appropriate credentials and teaching competencies. High school instructors must be provided with orientation, assessment methods, and administrative requirements before teaching dual credit courses, and they must be able to participate in all activities available to adjunct faculty. (<http://www.ilga.gov/legislation/ilcs/ilcs3.asp?ActID=3117&ChapterID=18>)

Dual credit course content is prescribed by Illinois Community Colleges in accordance with established course requirements. According to ICCB Administrative Rules: “Course prerequisites, descriptions, outlines, requirements, learning outcomes, and methods of evaluating students shall be the same as for on-campus offerings.” ([https://www.iccb.org/iccb/wp-content/pdfs/manuals/ICCB\\_SystemRules\\_Manual\\_09-16.pdf](https://www.iccb.org/iccb/wp-content/pdfs/manuals/ICCB_SystemRules_Manual_09-16.pdf))

There is currently no cap on the number of credit hours students may earn that is set in the Dual Credit Quality Act or ICCB Administrative Rules; however, the high school or the college may have their own limits.

### Characteristics of Dual Credit Students (unduplicated)

#### OVERALL HEADCOUNT

The Illinois Community College System recorded a total of 54,871 high school students enrolled in dual credit courses during fiscal year 2016, which was 9.2 percent of all credit enrollments (N = 597,290). Currently, **all** Illinois community colleges offer dual credit courses. Appendix Table A-1 provides annual dual credit headcount enrollment in fiscal years 2012 through 2016 for each community college. Annual dual credit

Each of the 48 community colleges in Illinois provided dual credit courses in fiscal year 2016
------------------------------------------------------------------------------------------------

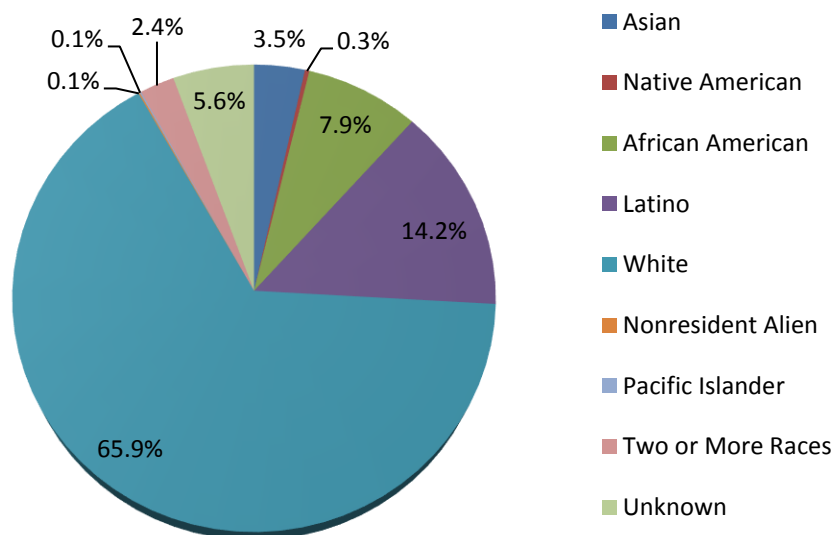
enrollments increased 6.1 percent compared to the previous year (N = 51,718) and 21.0 percent compared to five years ago (N = 45,365). Among Illinois' 48 colleges, 17 colleges reported more than 1,000 dual credit enrollments in fiscal year 2016. College of DuPage reported the most dual credit enrollments (N = 5,248) followed by Lewis & Clark Community College (N = 3,919) and Harper College (N = 3,056).

## GENDER AND RACIAL/ETHNICITY CHARACTERISTICS

Overall, Table 1 shows nearly equal proportions of female (51.6 percent) and male (48.4 percent) high school students enrolled in community college courses in fiscal year 2016 (Appendix Table A-2). Figure 1 depicts the race/ethnicity of high school students enrolling in community college dual credit courses in fiscal year 2016. In general, minority high school students were less likely to pursue dual credit than white students. Nearly seven in ten dual credit students were White (65.9 percent). Latino dual credit students accounted for 14.2 percent and African American students for 7.9 percent in fiscal year 2016. Asian (3.5 percent), Native American (0.3 percent), Pacific Islander (0.1 percent), and Nonresident Alien (0.1 percent) represented a small portion of dual credit students (Appendix Table A-3).

Table 1 Dual Credit Enrollment by Gender Fiscal Year 2016		
	Number	Percent
Male	26,574	48.4%
Female	28,297	51.6%
Total	54,871	100.0%
Source of Data: ICCB Annual Enrollment and Completion (A1) Data		

**Figure 1. Race/Ethnicity of High School Students Taking Dual Credit Courses  
Fiscal Year 2016**



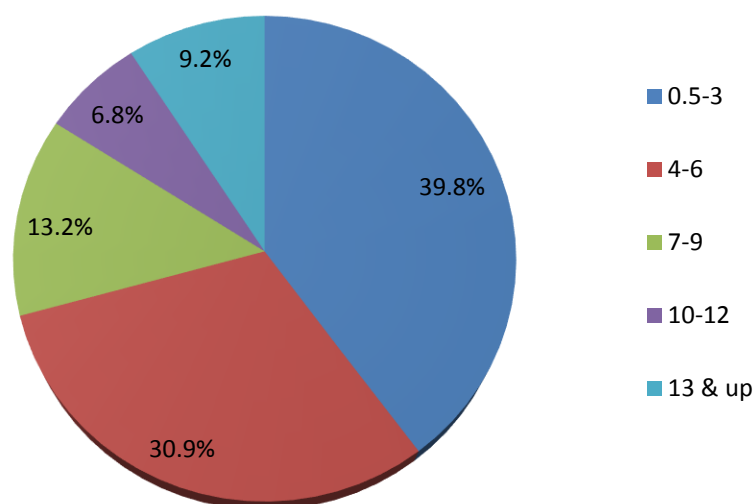
Source of Data: ICCB Annual Enrollment and Completion (A1) Data

Enrollments of dual credit students constitute **9.2 percent of all credit enrollments** at Illinois community colleges (N = 597,290). Lewis & Clark Community College reported the largest proportion of dual credit enrollment in comparison to the college's total credit enrollment in fiscal year 2015 (35.6 percent) followed by Kaskaskia College (34.7 percent) and Danville Area Community College (22.1 percent) (Appendix Table A-4).

### CREDIT HOURS ENROLLED BY DUAL CREDIT STUDENTS

Of the 54,871 high school students that enrolled in dual credit coursework in fiscal year 2016, four out of ten students (39.8 percent) enrolled in college-level coursework of up to three credit hours, every other student took between four and twelve credit hours (51.0 percent), and only about one out of ten students (9.2 percent) enrolled in more than 13 credit hours of college-level coursework in FY16.

**Figure 2. Percent of Dual Credit Headcount Enrollment by Number of Enrolled Hours Fiscal Year 2016**



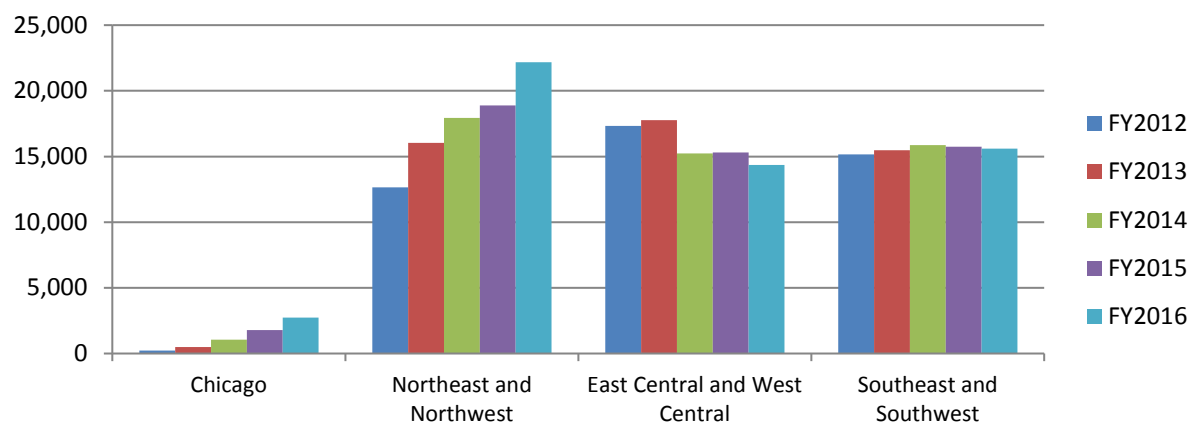
Source of Data: ICCB Annual Enrollment and Completion (A1) Data

### GEOGRAPHIC REGION

In Figure 3, comparing dual credit enrollment counts regionally, Illinois community colleges in the Northeast/Northwest (N = 22,182) had the most dual credit students in fiscal year 2016 followed by Southeast/Southwest (N = 15,601), East Central/West Central (N = 14,352), and the City of Chicago (N = 2,736). From fiscal year 2012 to 2016, the largest increase in dual credit occurred in the City of Chicago (+ 1084.1 percent) followed by Northeast/Northwest (+ 75.4 percent), and Southeast/Southwest (+ 2.9 percent) while East Central/West Central experienced a decrease in dual credit (- 17.2 percent). The list of colleges in each geographic region is provided in Appendix D

## Dual Credit in the Illinois Community College System

**Figure 3. Dual Credit Enrollment by Geographic Region  
Fiscal Years 2012 - 2016**

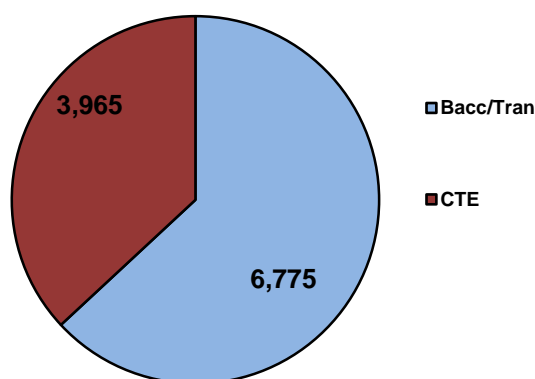


Source of Data: ICCB Annual Enrollment and Completion (A1) Data

### Dual Credit Course Count and Enrollment (duplicated)

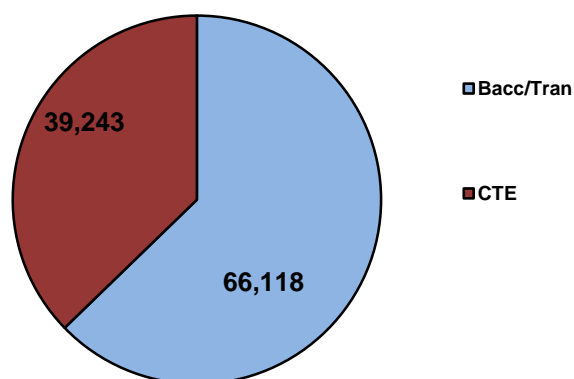
In the following portion of the report, the dual credit course counts and enrollment data are organized by broad programmatic area based on the Program Classification Structure (PCS): Overall, Baccalaureate/Transfer Education and Career and Technical Education. Figures 4 and 5 depict dual credit course counts and enrollments by PCS in fiscal year 2016.

**Figure 4. FY 2016 Dual Credit Course Count  
by Baccalaureate/Transfer & CTE**



(Source of Data: ICCB Annual Course Data (AC)

**Figure 5. FY 2016 Dual Credit Enrollment by  
Baccalaureate/Transfer & CTE**



Source of Data: ICCB Annual Course Data (AC)

### OVERALL COURSE COUNT AND ENROLLMENT

Illinois community colleges offered a total of 10,740 of dual credit courses (duplicated) in fiscal year 2016, which was a increase of 7.6 percent from the previous year (N=9,986). Dual credit courses accounted for 6.6 percent of all credit courses (N = 162,726) and 8.4 percent of all Baccalaureate/Transfer or Career and Technical Education courses in fiscal year 2016 (N = 127,783). Appendix Table B-1 provides dual credit course count in fiscal years 2015 and 2016 for each community



## Dual Credit in the Illinois Community College System

college. Southwestern Illinois College reported most dual credit courses (N = 995), followed by Rock Valley College (N = 896) and Danville Area Community College (N = 576).

Duplicated dual credit course enrollments totaled 105,361 in fiscal year 2016, which was an increase of 6.1 percent compared to 2015 (N = 99,343). Among Illinois' community colleges, 33 colleges reported increases in dual credit

More than one hundred thousand enrollments occurred across dual credit courses in fiscal year 2016

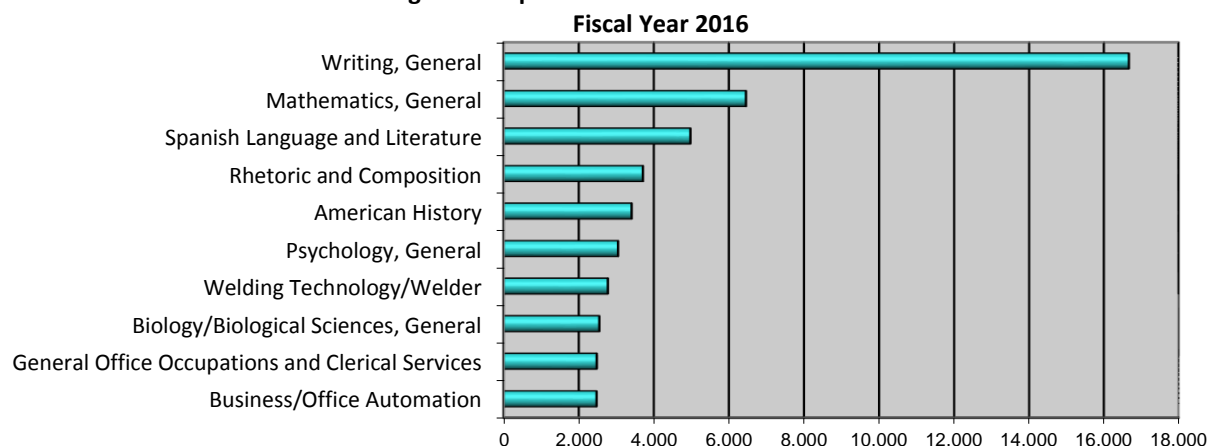
enrollments while 13 colleges exhibited decreases in comparison to fiscal year 2015. Two colleges experienced little or no change (1.0 percent or less). Dual credit enrollment accounted for 5.3 percent of all course enrollments (N = 2,001,095) and 6.2 percent of all Baccalaureate/Transfer or Career and Technical Education course enrollments (N = 1,693,571) in fiscal year 2016. Lewis & Clark Community College reported most duplicated dual credit enrollments (N = 8,894) in fiscal year 2016, followed by College of DuPage (N = 8,039) and Kaskaskia College (N = 7,151) (Appendix Table B-2).

As seen in Table 2, the average dual credit class size was 9.8 students per class in fiscal year 2016, a 1.4 percent decrease from 2015 (N = 9.9). The average dual credit class size ranged from 19.7 students at McHenry County College to 3.9 students at Rock Valley College in fiscal year 2016 (Appendix Table B-3).

Table 2 Dual Credit Course Count, Student Enrollment (Duplicated), and Average Class Size Fiscal Years 2015 & 2016		
	2015	2016
Number of Courses	9,986	10,740
Number of Students (Duplicated)	99,343	105,361
Average Class Size	9.9	9.8
Source of Data: Annual Course Data (AC)		

Enrollments in the ten largest programs accounted for 46.1 percent (N = 48,548) of all dual credit enrollments in fiscal year 2016. As depicted in Figure 6, the ten highest dual credit enrollments overall by CIP code in fiscal year 2016 were in Writing, General, which was formerly reported under English Composition (N = 16,671); Mathematics, General (N = 6,454); Spanish Language and Literature (N = 4,975); Rhetoric and Composition, which was formerly reported under Speech and Rhetorical Studies (N = 3,710); American History (United States) (N = 3,409); Psychology, General (N = 3,047); Welding Technology/Welder (N = 2,777); Biology/Biological Sciences, General (N = 2,549); General Office Occupations and Clerical Services (N = 2,481); and Business/Office Automation/Technology/Data Entry (N = 2,475). Eight programs experienced increases from 2015. (Appendix Table B-4).

**Figure 6. Top Ten Dual Credit Course Enrollments**



Source of Data: ICCB Annual Course (AC) Data

The five highest dual credit enrollments by program (2-digit CIP) in fiscal year 2016 were in English Language and Literature/Letters (N = 21,478); Mathematics and Statistics (N = 9,528); Business Management, Marketing, and Related Supportive Services (N = 9,471); Computer and Information Sciences and Support Services (N = 6,184); and Health Professions and Related Programs (N = 6,037) (Appendix Table B-14).

Appendix Table B-15 provides statewide dual credit enrollment by career cluster. The top five career clusters are Arts, Audio/Video Technology & Communications (N = 24,898); Science, Technology, Engineering & Mathematics (N = 22,840); Education & Training (N = 12,512); Business Management & Administration (N = 8,039); and Manufacturing (N = 6,934).

## BACCALAUREATE/TRANSFER

As Table 3 shows, Illinois community colleges offered 6,775 Baccalaureate/Transfer dual credit courses in fiscal year 2016 (Appendix Table B-5), which was 63.1 percent of all dual credit courses offered. This is a 10.8 percent increase compared to the previous year (N = 6,112). In fiscal year 2015, Baccalaureate/Transfer dual credit courses accounted for 61.2 percent of all dual credit courses. The average dual credit class size in Baccalaureate/ Transfer education was 9.8 students in fiscal year 2016 (Appendix Table B-7).

Table 3 Baccalaureate/Transfer & CTE Dual Credit Course Count Fiscal Years 2015 & 2016		
	<u>2015</u>	<u>2016</u>
Bacc/Transfer	6,112	6,775
CTE	3,874	3,965
Total	9,986	10,740
Source of Data: Annual Course Data (AC)		

As seen in Table 4, Baccalaureate/Transfer dual credit enrollments (Appendix Table B-6) accounted for 62.8 percent of all dual credit enrollments in fiscal year 2016. Enrollments in this area increased to 66,118 in fiscal year 2016, an increase of 7.2 percent from 2015 (N = 61,698). Appendix Table B-8 shows the top five enrollments in Baccalaureate/Transfer courses: Writing, General (N = 16,655); Mathematics, General (N = 6,454); Spanish Language and Literature (N = 4,975); Rhetoric and Composition (N = 3,676); and American History (United States) (N = 3,409). Enrollments in these five courses accounted for 33.4 percent of all dual credit enrollments in fiscal year 2016.

Table 4 Dual Credit Enrollment (Duplicated) in Baccalaureate/Transfer & CTE Courses Fiscal Years 2015 & 2016		
	<u>2015</u>	<u>2016</u>
Bacc/Transfer	61,698	66,118
CTE	37,645	39,243
Total	99,343	105,361
Source of Data: Annual Course Data (AC)		

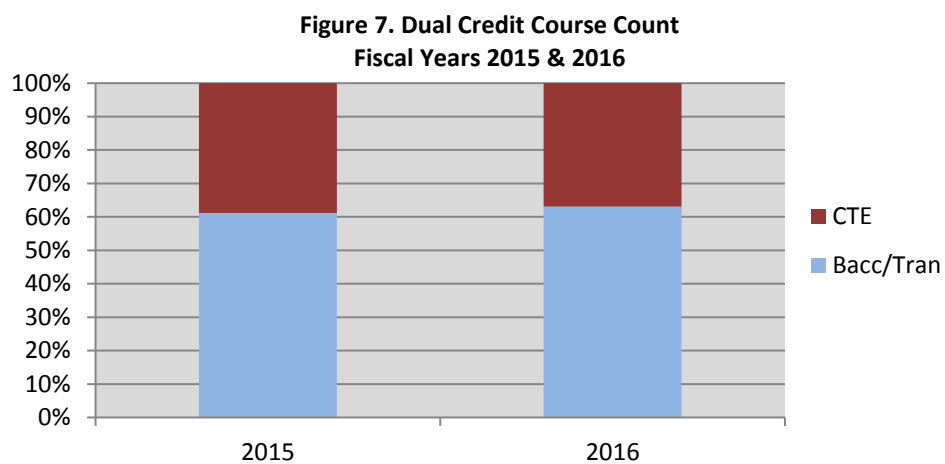
## CAREER AND TECHNICAL EDUCATION

The Career and Technical Education dual credit course count was 3,965 in fiscal year 2016, which was 36.9 percent of all dual credit courses offered. This is an increase of 2.3 percent from 2015 (N = 3,874) (Appendix Table B-9). The average dual credit class size in in this area was 9.9 students in fiscal year 2016 (Appendix Table B-11).

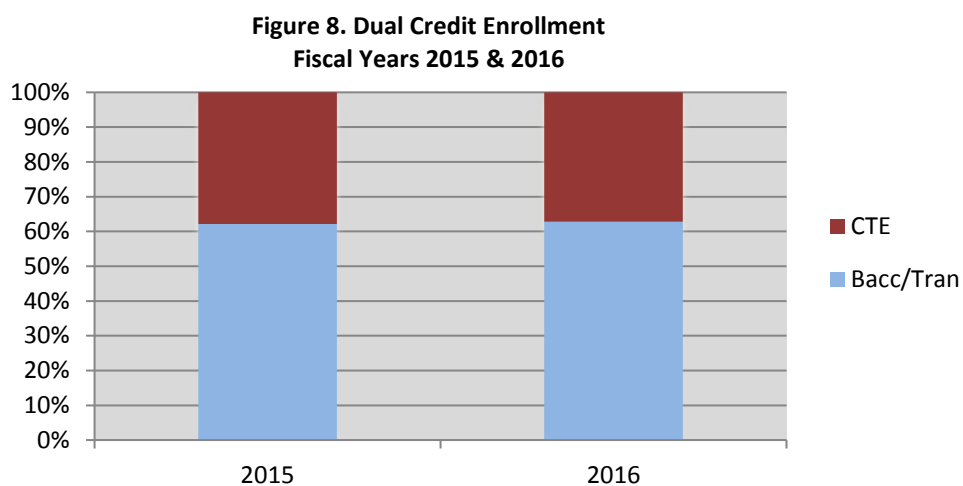
Dual credit enrollments in Career and Technical Education increased to 39,243 in fiscal year 2016, which is a 4.2 percent increase over 2015 (N = 37,645). Appendix Table B-12 shows that the highest enrollments in this area were in Welding Technology/Welder (N = 2,777); General Office Occupations and Clerical Services (N = 2,481); Business/Office Automation/Technology/Data Entry (N = 2,475); Nurse/Nursing Assistant/Aide and Patient Care Assistant (N = 2,301); and Computer Programming/Programmer, General (N = 1,639). Enrollments in these five courses accounted for 11.1 percent of all dual credit enrollments in fiscal year 2016.

Figures 7 and 8 depict the proportion of Baccalaureate/Transfer and Career and Technical Education dual credit course counts and enrollments in fiscal years 2015 and 2016.

## Dual Credit in the Illinois Community College System



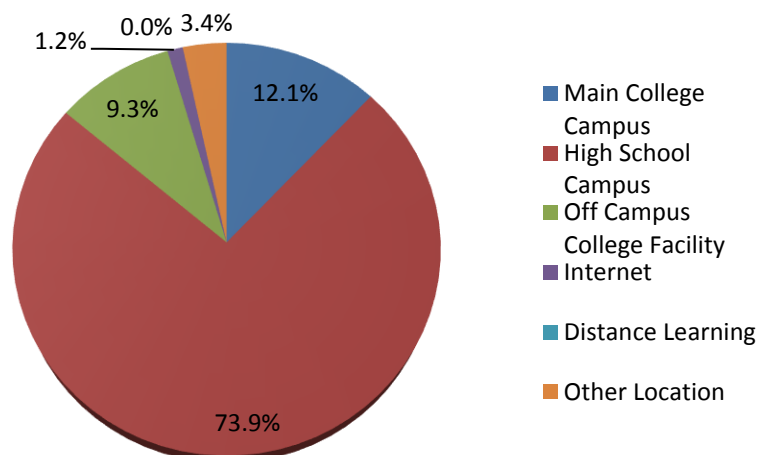
Source of Data: ICCB Annual Course (AC) Data



Source of Data: ICCB Annual Course (AC) Data

In fiscal year 2016, every three out of four high school dual credit students (73.9 percent) enrolled in dual credit courses at the high school campus. About one out of five high school dual credit students attended a main college campus (12.1 percent) or an off campus college facility (9.3 percent). The remaining 4.6 percent of dual credit students either chose online/distance education classes (1.2 percent), or some other location (3.4 percent) to enroll in dual credit courses.

**Figure 9. Dual Credit Enrollment by Instructional Site  
Fiscal Year 2016**

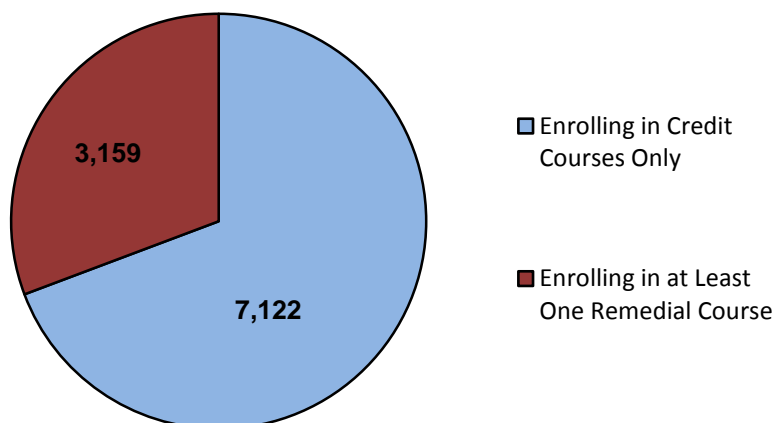


Source of Data: ICCB Annual Course (AC) Data

### Matriculation of Dual Credit Students to Illinois Community Colleges

Of 41,764 high school seniors who had enrolled in the dual credit coursework in fiscal year 2015, one in four students (24.6 percent) entered the same community college in fiscal year 2016 that they had attended as dual credit students. More than two-thirds of the entering students (N = 10,281) enrolled in credit courses (69.3 percent) while the remaining students enrolled in remedial courses (30.7 percent). The largest proportion of dual credit seniors enrolling in the same institution in fiscal year 2016 was reported by Shawnee Community College (66.2 percent), followed by Lake Land College (52.0 percent) and Lincoln Trail College (49.9 percent) (Appendix Table C-1).

**Figure 10. Fiscal Year 2015 Dual Credit Students Enrolling in  
the Same Community College in Fiscal Year 2016**



Source of Data: ICCB Annual Enrollment and Completion (A1) Data

## Bibliography

- Illinois 96<sup>th</sup> General Assembly. (2009). Higher Education (110 ILCS 27/) Dual Credit Quality Act. Springfield, IL: Illinois General Assembly. <http://www.ilga.gov/legislation/ilcs/ilcs3.asp?ActID=3117&ChapterID=18>
- Illinois Community College Board. (September 2016). Administrative Rules of the Illinois Community College Board. Springfield, IL: Illinois Community College Board. [https://www.iccb.org/iccb/wp-content/pdfs/manuals/ICCB\\_SystemRules\\_Manual\\_09-16.pdf](https://www.iccb.org/iccb/wp-content/pdfs/manuals/ICCB_SystemRules_Manual_09-16.pdf)
- Illinois Community College Board. (January 2016). Dual Credit in the Illinois Community College System. Springfield, IL: Illinois Community College Board. [https://www.iccb.org/iccb/wp-content/pdfs/reports/FY15\\_Dual\\_Credit\\_Report\\_1-19-16.pdf](https://www.iccb.org/iccb/wp-content/pdfs/reports/FY15_Dual_Credit_Report_1-19-16.pdf)
- National Alliance of Concurrent Enrollment Partnerships. Fast Facts about Dual and Concurrent Enrollment. <http://www.nacep.org/research-policy/fast-facts/>
- Ralph, J. et al. (February 2013). Dual Credit and Exam-Based Courses in U.S. Public High Schools: 2010-11. Washington D.C.: National Center for Education Statistics <http://nces.ed.gov/pubs2013/2013001.pdf>
- U.S. Census Bureau (2015). American Facts Finder. Author. Washington D.C. <http://factfinder.census.gov/faces/nav/jsf/pages/index.xhtml>

## Appendix A

### *Unduplicated Enrollment Counts*

- A-1 Dual Credit Headcount Enrollment by College, FY 2012-2016
- A-2 Dual Credit Headcount Enrollment by Gender and by College, FY 2016
- A-3 Dual Credit Headcount Enrollment by Ethnic Origin and by College, FY 2016
- A-4 Dual Credit Headcount Enrollment vs. Overall Credit Enrollment by College, FY 2016
- A-5 Dual Credit Headcount Enrollment by Number of Enrolled Hours and by College, FY 2016

## Appendix B

### *Duplicated Course and Enrollment Counts*

- B-1 Dual Credit Course Count by College, FY 2015 & FY16
- B-2 Dual Credit Enrollment by College, FY 2015 & 2016
- B-3 Average Dual Credit Class Size by College, FY 2015 & 2016
- B-4 Top 10 Dual Credit Course Enrollments by CIP, FY 2015 & 2016
- B-5 Baccalaureate/Transfer Dual Credit Course Count by College, FY 2015 & 2016
- B-6 Baccalaureate/Transfer Dual Credit Enrollment by College, FY 2015 & 2016
- B-7 Baccalaureate/Transfer Average Dual Credit Class Size by College, FY 2015 & 2016
- B-8 Top 5 Baccalaureate/Transfer Dual Credit Course Enrollments by College, FY 2016
- B-9 Career & Technical Education Dual Credit Course Count by College, FY 2015 & 2016
- B-10 Career & Technical Education Dual Credit Enrollment by College, FY 2015 & 2016
- B-11 Career & Technical Education Average Dual Credit Class Size by College, FY 2015 & 2016
- B-12 Top 5 Career & Technical Education Dual Credit Course Enrollments by College, FY 2016
- B-13 Dual Credit Enrollment by 6-digit CIP, FY 2015 & 2016
- B-14 Dual Credit Enrollment by 2-digit CIP, FY 2015 & 2016
- B-15 Dual Credit Enrollment by Career Cluster, FY 2015 & 2016
- B-16 Dual Credit Enrollment by Instructional Site and by College, FY 2016

## Appendix C

- C-1 FY15 Graduating Dual Credit Students Enrolling in the Same Community College in FY16

## Appendix D

### *Illinois Geographic Regions*

**Chicago:** Harold Washington College, Harry S Truman College, Kennedy-King College, Malcolm X College, Olive-Harvey College, Richard J Daley College, and Wilbur Wright College

**Northeast and Northwest:** College of DuPage, College of Lake County, Elgin Community College, Harper College, Highland Community College, Kishwaukee College, McHenry County College, Moraine Valley Community College, Morton College, Oakton Community College, Prairie State College, Rock Valley College, Sauk Valley Community College, South Suburban College, Triton College, Waubesa Community College

**East Central and West Central:** Black Hawk College, Carl Sandburg College, Danville Area Community College, Heartland Community College, Illinois Central College, Illinois Valley Community College, John Wood Community College, Joliet Junior College, Kankakee Community College, Lincoln Land Community College, Parkland College, Richland Community College, Spoon River College

**Southeast and Southwest:** Frontier Community College, John A Logan College, Kaskaskia College, Lake Land College, Lewis & Clark Community College, Lincoln Trail College, Olney Central College, Rend Lake College, Shawnee Community College, Southeastern Illinois College, Southwestern Illinois College, Wabash Valley College



Illinois Community College Board  
Table A-1  
DUAL CREDIT HEADCOUNT ENROLLMENT BY COLLEGE  
FISCAL YEARS 2012 - 2016

<u>District</u>	<u>College Name</u>	<u>FY 2012 Headcount</u>	<u>FY 2013 Headcount</u>	<u>FY 2014 Headcount</u>	<u>FY 2015 Headcount</u>	<u>FY 2016 Headcount</u>	<u>% Change 2012-2016</u>	<u>% Change 2015-2016</u>
503	Black Hawk	1,055	1,163	1,296	1,372	1,271	20.5	-7.4
508	Chicago	(231)	(499)	(1,055)	(1,777)	(2,736)	(1084.4)	(54.0)
06	Daley	4	144	236	412	628	15600.0	52.4
01	Kennedy-King	1	5	70	133	173	17200.0	30.1
03	Malcolm X	1	77	92	118	217	21600.0	83.9
05	Olive-Harvey	10	0	201	186	300	2900.0	61.3
04	Truman	185	207	214	327	353	90.8	8.0
02	Washington	22	34	109	223	388	1663.6	74.0
07	Wilbur-Wright	8	32	133	378	677	8362.5	79.1
507	Danville	1,357	1,437	1,429	1,431	1,588	17.0	11.0
502	DuPage	2,340	2,918	3,975	4,874	5,248	124.3	7.7
509	Elgin	141	661	896	970	973	590.1	0.3
512	Harper	996	1,875	1,956	2,315	3,056	206.8	32.0
540	Heartland	296	228	348	821	774	161.5	-5.7
519	Highland	316	833	828	799	973	207.9	21.8
514	Illinois Central	1,840	1,682	1,645	1,786	1,665	-9.5	-6.8
529	Illinois Eastern	(1,328)	(1,375)	(1,411)	(1,360)	(1,334)	(0.5)	(-1.9)
04	Frontier	706	724	745	697	621	-12.0	-10.9
01	Lincoln Trail	209	211	182	184	203	-2.9	10.3
02	Olney Central	188	196	236	249	235	25.0	-5.6
03	Wabash Valley	225	244	248	230	275	22.2	19.6
513	Illinois Valley	626	574	556	563	517	-17.4	-8.2
525	Joliet	7,516	7,830	4,865	4,072	3,029	-59.7	-25.6
520	Kankakee	461	420	518	465	606	31.5	30.3
501	Kaskaskia	2,608	2,663	2,809	2,955	2,889	10.8	-2.2
523	Kishwaukee	412	434	500	494	533	29.4	7.9
532	Lake County	1,073	1,140	1,267	1,292	1,217	13.4	-5.8
517	Lake Land	1,516	1,515	1,599	1,544	1,508	-0.5	-2.3
536	Lewis & Clark	3,819	4,209	4,146	3,915	3,919	2.6	0.1
526	Lincoln Land	1,578	1,686	1,781	1,852	1,784	13.1	-3.7
530	Logan	915	896	1,046	1,011	943	3.1	-6.7
528	McHenry	532	654	798	916	1,337	151.3	46.0
524	Moraine Valley	2,794	2,638	2,203	1,436	1,957	-30.0	36.3
527	Morton	0	236	229	135	146	---	8.1
535	Oakton	537	650	781	633	750	39.7	18.5
505	Parkland	866	915	1,004	1,042	1,146	32.3	10.0
515	Prairie State	729	546	540	718	864	18.5	20.3
521	Rend Lake	1,097	934	988	1,041	1,049	-4.4	0.8
537	Richland	872	880	825	851	940	7.8	10.5
511	Rock Valley	593	616	653	649	650	9.6	0.2
518	Sandburg	353	399	443	454	434	22.9	-4.4
506	Sauk Valley	724	726	812	847	690	-4.7	-18.5
531	Shawnee	484	474	508	493	510	5.4	3.4
510	South Suburban	585	632	712	773	873	49.2	12.9
533	Southeastern	546	706	702	587	675	23.6	15.0
522	Southwestern/Belleville	2,844	2,702	2,663	2,848	2,774	-2.5	-2.6
534	Spoon River	302	340	306	289	295	-2.3	2.1
504	Triton	195	408	501	580	735	276.9	26.7
516	Waubensee	678	1,058	1,275	1,461	2,180	221.5	49.2
539	Wood	210	211	222	297	303	44.3	2.0
TOTALS/AVERAGES		45,365	49,763	50,091	51,718	54,871	21.0 %	6.1 %

SOURCE OF DATA: Annual Enrollment and Completion (A1) Data

Illinois Community College Board  
Table A-2  
DUAL CREDIT HEADCOUNT ENROLLMENT BY GENDER AND BY COLLEGE  
FISCAL YEAR 2016

Dist.				
<u>No.</u>	<u>District/College</u>	<u>Male</u>	<u>Female</u>	<u>Total</u>
50301	Black Hawk	576	695	1,271
50800	Chicago	(1,237)	(1,499)	(2,736)
50806	Daley	285	343	628
50801	Kennedy-King	75	98	173
50803	Malcolm X	94	123	217
50805	Olive-Harvey	113	187	300
50804	Truman	187	166	353
50802	Washington	147	241	388
50807	Wright	336	341	677
50701	Danville	713	875	1,588
50201	DuPage	2,512	2,736	5,248
50901	Elgin	528	445	973
51201	Harper	1,519	1,537	3,056
54001	Heartland	312	462	774
51901	Highland	492	481	973
51401	Illinois Central	733	932	1,665
52900	Illinois Eastern	(666)	(668)	(1,334)
52904	Frontier	294	327	621
52901	Lincoln Trail	94	109	203
52902	Olney Central	128	107	235
52903	Wabash Valley	150	125	275
51301	Illinois Valley	211	306	517
52501	Joliet	1,427	1,602	3,029
52001	Kankakee	267	339	606
50101	Kaskaskia	1,427	1,462	2,889
52301	Kishwaukee	288	245	533
53201	Lake County	656	561	1,217
51701	Lake Land	754	754	1,508
53601	Lewis & Clark	2,003	1,916	3,919
52601	Lincoln Land	786	998	1,784
53001	Logan	382	561	943
52801	McHenry	702	635	1,337
52401	Moraine Valley	1,279	678	1,957
52701	Morton	74	72	146
53501	Oakton	398	352	750
50501	Parkland	544	602	1,146
51501	Prairie State	408	456	864
52101	Rend Lake	481	568	1,049
53701	Richland	434	506	940
51101	Rock Valley	281	369	650
51801	Sandburg	189	245	434
50601	Sauk Valley	285	405	690
53101	Shawnee	211	299	510
51001	South Suburban	375	498	873
53301	Southeastern	323	352	675
52201	Southwestern	1,511	1,263	2,774
53401	Spoon River	122	173	295
50401	Triton	371	364	735
51601	Waubonsee	977	1,203	2,180
53901	Wood	<u>120</u>	<u>183</u>	<u>303</u>
TOTALS		26,574	28,297	54,871

SOURCE OF DATA: Annual Enrollment and Completion (A1) Data

Illinois Community College Board  
Table A-3  
DUAL CREDIT HEADCOUNT ENROLLMENT BY ETHNIC ORIGIN\* AND BY COLLEGE  
FISCAL YEAR 2016

Dist. No.	District/College	Asian	Native American	African American Non-Latino	Latino	White Non-Latino	Non- Resident Alien	Pacific Islander	Two or More Races	All Other or No Indication	Total
50301	Black Hawk	22	3	54	152	977	0	3	43	17	1,271
50800	Chicago	(118)	(3)	(831)	(1,455)	(191)	(6)	(3)	(103)	(26)	(2,736)
50806	Daley	23	0	94	459	38	1	0	12	1	628
50801	Kennedy-King	1	1	79	78	6	0	0	8	0	173
50803	Malcolm X	0	0	59	156	1	0	0	1	0	217
50805	Olive-Harvey	1	0	192	81	4	3	0	19	0	300
50804	Truman	26	0	56	224	24	1	2	13	7	353
50802	Washington	8	1	294	47	4	0	1	23	10	388
50807	Wright	59	1	57	410	114	1	0	27	8	677
50701	Danville	9	9	117	58	1,247	0	2	12	134	1,588
50201	DuPage	498	20	315	1,039	2,746	2	6	38	584	5,248
50901	Elgin	29	2	19	402	472	0	0	25	24	973
51201	Harper	366	4	87	766	1,629	0	1	73	130	3,056
54001	Heartland	9	0	21	30	644	0	1	37	32	774
51901	Highland	4	6	26	44	843	0	0	35	15	973
51401	Illinois Central	43	4	73	49	1,466	0	4	25	1	1,665
52900	Illinois Eastern	(7)	(4)	(2)	(11)	(1,296)	(0)	(1)	(13)	(0)	(1,334)
52904	Frontier	2	3	1	7	603	0	0	5	0	621
52901	Lincoln Trail	2	0	0	2	195	0	0	4	0	203
52902	Olney Central	3	0	0	1	230	0	0	1	0	235
52903	Wabash Valley	0	1	1	1	268	0	1	3	0	275
51301	Illinois Valley	9	1	7	33	438	0	1	3	25	517
52501	Joliet	54	21	195	640	1,921	2	2	159	35	3,029
52001	Kankakee	25	0	31	60	449	0	0	21	20	606
50101	Kaskaskia	23	17	84	45	2,625	1	2	88	4	2,889
52301	Kishwaukee	7	5	31	77	378	0	0	13	22	533
53201	Lake County	39	0	62	358	642	1	1	55	59	1,217
51701	Lake Land	12	4	4	16	1,412	0	0	26	34	1,508
53601	Lewis & Clark	32	20	193	56	3,163	0	11	3	441	3,919
52601	Lincoln Land	36	5	82	70	1,460	0	2	46	83	1,784
53001	Logan	4	2	20	15	631	0	3	6	262	943
52801	McHenry	46	5	26	182	924	2	0	13	139	1,337
52401	Moraine Valley	52	4	314	497	981	0	0	68	41	1,957
52701	Morton	1	0	3	112	6	0	0	1	23	146
53501	Oakton	217	1	30	99	346	12	2	30	13	750
50501	Parkland	31	4	42	45	668	1	1	30	324	1,146
51501	Prairie State	3	1	554	103	160	2	0	14	27	864
52101	Rend Lake	6	0	36	17	970	1	2	12	5	1,049
53701	Richland	7	1	98	11	784	0	1	6	32	940
51101	Rock Valley	24	2	18	87	498	0	1	13	7	650
51801	Sandburg	2	1	4	19	382	0	1	15	10	434
50601	Sauk Valley	4	0	14	104	550	0	0	2	16	690
53101	Shawnee	3	1	46	24	418	0	1	0	17	510
51001	South Suburban	16	7	405	181	202	0	5	22	35	873
53301	Southeastern	3	0	5	4	624	0	0	22	17	675
52201	Southwestern	29	11	331	140	1,957	2	1	165	138	2,774
53401	Spoon River	4	1	3	3	284	0	0	0	0	295
50401	Triton	19	0	73	228	258	0	2	16	139	735
51601	Waubonsee	88	4	97	584	1,226	1	3	63	114	2,180
53901	Wood	<u>3</u>	<u>0</u>	<u>0</u>	<u>1</u>	<u>296</u>	<u>0</u>	<u>0</u>	<u>1</u>	<u>2</u>	<u>303</u>
TOTALS		1,904	173	4,353	7,817	36,164	33	63	1,317	3,047	54,871

\*The ethnicity code was more closely aligned with federal reporting in 2016.

SOURCE OF DATA: Annual Enrollment and Completion (A1) Data

Illinois Community College Board  
Table A-4  
DUAL CREDIT HEADCOUNT ENROLLMENT VS.  
OVERALL CREDIT ENROLLMENT BY COLLEGE  
FISCAL YEAR 2016

<u>Dist. No.</u>	<u>District/College</u>	<u>Dual Credit Enrollment</u>	<u>Total Enrollment</u>	<u>% Dual Credit Enrollment</u>
50301	Black Hawk	1,271	9,830	12.9%
50800	Chicago	(2,736)	(85,278)	(3.2%)
50806	Daley	628	14,263	4.4%
50801	Kennedy-King	173	6,926	2.5%
50803	Malcolm X	217	9,513	2.3%
50805	Olive-Harvey	300	7,479	4.0%
50804	Truman	353	15,850	2.2%
50802	Washington	388	13,946	2.8%
50807	Wright	677	17,301	3.9%
50701	Danville	1,588	7,183	22.1%
50201	DuPage	5,248	46,624	11.3%
50901	Elgin	973	16,114	6.0%
51201	Harper	3,056	25,409	12.0%
54001	Heartland	774	8,981	8.6%
51901	Highland	973	4,433	21.9%
51401	Illinois Central	1,665	14,122	11.8%
52900	Illinois Eastern	(1,334)	(28,827)	(4.6%)
52904	Frontier	621	7,651	8.1%
52901	Lincoln Trail	203	1,544	13.1%
52902	Olney Central	235	2,159	10.9%
52903	Wabash Valley	275	17,473	1.6%
51301	Illinois Valley	517	5,535	9.3%
52501	Joliet	3,029	21,901	13.8%
52001	Kankakee	606	8,373	7.2%
50101	Kaskaskia	2,889	8,319	34.7%
52301	Kishwaukee	533	5,644	9.4%
53201	Lake County	1,217	24,952	4.9%
51701	Lake Land	1,508	22,278	6.8%
53601	Lewis & Clark	3,919	11,003	35.6%
52601	Lincoln Land	1,784	11,649	15.3%
53001	Logan	943	21,549	4.4%
52801	McHenry	1,337	10,431	12.8%
52401	Moraine Valley	1,957	26,598	7.4%
52701	Morton	146	6,942	2.1%
53501	Oakton	750	20,091	3.7%
50501	Parkland	1,146	19,047	6.0%
51501	Prairie State	864	9,818	8.8%
52101	Rend Lake	1,049	10,595	9.9%
53701	Richland	940	5,978	15.7%
51101	Rock Valley	650	12,084	5.4%
51801	Sandburg	434	2,922	14.9%
50601	Sauk Valley	690	3,275	21.1%
53101	Shawnee	510	5,796	8.8%
51001	South Suburban	873	9,770	8.9%
53301	Southeastern	675	4,816	14.0%
52201	Southwestern	2,774	18,706	14.8%
53401	Spoon River	295	2,562	11.5%
50401	Triton	735	17,832	4.1%
51601	Waubonsee	2,180	18,931	11.5%
53901	Wood	<u>303</u>	<u>3,092</u>	<u>9.8%</u>
TOTALS		54,871	597,290	9.2%

SOURCE OF DATA: Annual Enrollment and Completion (A1) Data

Illinois Community College Board  
Table A-5  
DUAL CREDIT HEADCOUNT ENROLLMENT  
BY NUMBER OF ENROLLED HOURS AND BY COLLEGE  
FISCAL YEAR 2016

Dist. No.	District/College	<u>0.5-3</u>	<u>4-6</u>	<u>7-9</u>	<u>10-12</u>	<u>13 and up</u>	<u>Total</u>
50301	Black Hawk	293	452	259	120	147	1,271
50800	Chicago	(855)	(1,225)	(345)	(185)	(126)	(2,736)
50806	Daley	172	270	118	42	26	628
50801	Kennedy-King	69	62	8	22	12	173
50803	Malcolm X	53	110	20	17	17	217
50805	Olive-Harvey	159	94	34	9	4	300
50804	Truman	114	109	56	41	33	353
50802	Washington	73	215	36	34	30	388
50807	Wright	215	365	73	20	4	677
50701	Danville	242	372	219	157	598	1,588
50201	DuPage	3,381	1,146	479	78	164	5,248
50901	Elgin	404	164	120	82	203	973
51201	Harper	1,364	1,296	293	82	21	3,056
54001	Heartland	203	305	152	63	51	774
51901	Highland	452	252	158	62	49	973
51401	Illinois Central	478	582	304	165	136	1,665
52900	Illinois Eastern	(244)	(273)	(210)	(182)	(425)	(1,334)
52904	Frontier	135	105	86	79	216	621
52901	Lincoln Trail	4	70	55	24	50	203
52902	Olney Central	30	46	33	43	83	235
52903	Wabash Valley	75	52	36	36	76	275
51301	Illinois Valley	214	199	22	34	48	517
52501	Joliet	1,007	1,435	352	146	89	3,029
52001	Kankakee	205	251	110	26	14	606
50101	Kaskaskia	1,032	751	380	273	453	2,889
52301	Kishwaukee	137	165	169	13	49	533
53201	Lake County	429	509	145	133	1	1,217
51701	Lake Land	350	466	209	219	264	1,508
53601	Lewis & Clark	1,380	947	698	314	580	3,919
52601	Lincoln Land	801	587	178	119	99	1,784
53001	Logan	455	294	160	23	11	943
52801	McHenry	697	209	294	94	43	1,337
52401	Moraine Valley	1,229	554	142	27	5	1,957
52701	Morton	50	85	11	0	0	146
53501	Oakton	383	190	169	7	1	750
50501	Parkland	262	450	146	172	116	1,146
51501	Prairie State	704	149	11	0	0	864
52101	Rend Lake	283	223	161	127	255	1,049
53701	Richland	303	283	138	134	82	940
51101	Rock Valley	123	73	67	48	339	650
51801	Sandburg	60	151	71	93	59	434
50601	Sauk Valley	184	173	153	102	78	690
53101	Shawnee	139	137	107	68	59	510
51001	South Suburban	724	140	9	0	0	873
53301	Southeastern	337	140	72	59	67	675
52201	Southwestern	1,259	1,005	204	118	188	2,774
53401	Spoon River	57	143	45	24	26	295
50401	Triton	131	407	60	61	76	735
51601	Waubensee	905	650	386	121	118	2,180
53901	Wood	<u>86</u>	<u>130</u>	<u>47</u>	<u>18</u>	<u>22</u>	<u>303</u>
TOTALS		21,842	16,963	7,255	3,749	5,062	54,871

SOURCE OF DATA: Annual Enrollment and Completion (A1) Data

Illinois Community College Board  
Table B-1  
DUAL CREDIT COURSE COUNT BY COLLEGE  
FOR FISCAL YEARS 2015 & 2016

<u>District</u>	<u>College</u>	<u>2015</u>	<u>2016</u>	FY 2015 - 2016	
				<u>1-Year Difference</u> <u>Number</u>	<u>Percent</u>
50301	Black Hawk	333	311	-22	-6.6%
50800	Chicago	(426)	(599)	(173)	(40.6%)
50806	Daley	62	138	76	122.6%
50801	Kennedy-King	27	46	19	70.4%
50803	Malcolm X	43	55	12	27.9%
50805	Olive-Harvey	27	45	18	66.7%
50804	Truman	60	118	58	96.7%
50802	Washington	118	119	1	0.8%
50807	Wright	89	78	-11	-12.4%
50701	Danville	522	576	54	10.3%
50201	DuPage	481	434	-47	-9.8%
50901	Elgin	83	80	-3	-3.6%
51201	Harper	189	296	107	56.6%
54001	Heartland	184	184	0	0.0%
51901	Highland	131	160	29	22.1%
51401	Illinois Central	231	224	-7	-3.0%
52900	Illinois Eastern	(406)	(354)	(-52)	-12.8%
52904	Frontier	206	159	-47	-22.8%
52901	Lincoln Trail	45	47	2	4.4%
52902	Olney Central	59	57	-2	-3.4%
52903	Wabash Valley	96	91	-5	-5.2%
51301	Illinois Valley	199	190	-9	-4.5%
52501	Joliet	471	307	-164	-34.8%
52001	Kankakee	48	54	6	12.5%
50101	Kaskaskia	529	517	-12	-2.3%
52301	Kishwaukee	60	61	1	1.7%
53201	Lake County	139	151	12	8.6%
51701	Lake Land	316	331	15	4.7%
53601	Lewis & Clark	578	542	-36	-6.2%
52601	Lincoln Land	238	245	7	2.9%
53001	Logan	111	121	10	9.0%
52801	McHenry	101	103	2	2.0%
52401	Moraine Valley	137	143	6	4.4%
52701	Morton	17	15	-2	-11.8%
53501	Oakton	53	57	4	7.5%
50501	Parkland	336	336	0	0.0%
51501	Prairie State	80	75	-5	-6.3%
52101	Rend Lake	191	267	76	39.8%
53701	Richland	226	289	63	27.9%
51101	Rock Valley	727	896	169	23.2%
51801	Sandburg	201	178	-23	-11.4%
50601	Sauk Valley	338	328	-10	-3.0%
53101	Shawnee	54	59	5	9.3%
51001	South Suburban	122	156	34	27.9%
53301	Southeastern	255	263	8	3.1%
52201	Southwestern	769	995	226	29.4%
53401	Spoon River	87	124	37	42.5%
50401	Triton	113	142	29	25.7%
51601	Waubonsee	410	490	80	19.5%
53901	Wood	<u>94</u>	<u>87</u>	<u>-7</u>	<u>-7.4%</u>
TOTALS		9,986	10,740	754	7.6%
Pure					
Minimum		17	15	-164	-34.8%
Maximum		769	995	226	122.6%
Median		134	154	5	3.1%
Standard Deviation		187	208	56	29.3%
Average		208	224	16	12.5%

SOURCE OF DATA: Annual Course (AC) Data

Illinois Community College Board  
Table B-2  
DUAL CREDIT ENROLLMENT BY COLLEGE  
FOR FISCAL YEARS 2015 & 2016

<u>District</u>	<u>College</u>	<u>2015</u>	<u>2016</u>	FY 2015 - 2016	
				<u>1-Year Difference</u> <u>Number</u>	<u>Percent</u>
50301	Black Hawk	3,689	3,243	-446	-12.1%
50800	Chicago	(2,623)	(4,603)	(1,980)	(75.5%)
50806	Daley	513	1,094	581	113.3%
50801	Kennedy-King	144	334	190	131.9%
50803	Malcolm X	176	396	220	125.0%
50805	Olive-Harvey	281	415	134	47.7%
50804	Truman	521	655	134	25.7%
50802	Washington	468	792	324	69.2%
50807	Wright	520	917	397	76.3%
50701	Danville	1,896	2,306	410	21.6%
50201	DuPage	7,628	8,039	411	5.4%
50901	Elgin	374	365	-9	-2.4%
51201	Harper	3,098	4,097	999	32.2%
54001	Heartland	1,697	1,523	-174	-10.3%
51901	Highland	1,306	1,740	434	33.2%
51401	Illinois Central	3,924	3,786	-138	-3.5%
52900	Illinois Eastern	(4,314)	(4,255)	(-59)	(-1.4%)
52904	Frontier	2,455	2,138	-317	-12.9%
52901	Lincoln Trail	417	538	121	29.0%
52902	Olney Central	823	783	-40	-4.9%
52903	Wabash Valley	619	796	177	28.6%
51301	Illinois Valley	1,452	1,327	-125	-8.6%
52501	Joliet	6,997	4,730	-2,267	-32.4%
52001	Kankakee	644	909	265	41.1%
50101	Kaskaskia	7,129	7,151	22	0.3%
52301	Kishwaukee	719	795	76	10.6%
53201	Lake County	1,937	1,775	-162	-8.4%
51701	Lake Land	3,599	3,584	-15	-0.4%
53601	Lewis & Clark	9,006	8,894	-112	-1.2%
52601	Lincoln Land	3,224	3,015	-209	-6.5%
53001	Logan	1,419	1,953	534	37.6%
52801	McHenry	1,520	2,026	506	33.3%
52401	Moraine Valley	2,207	2,632	425	19.3%
52701	Morton	201	227	26	12.9%
53501	Oakton	796	903	107	13.4%
50501	Parkland	2,150	2,376	226	10.5%
51501	Prairie State	1,036	1,165	129	12.5%
52101	Rend Lake	2,845	3,040	195	6.9%
53701	Richland	1,647	2,102	455	27.6%
51101	Rock Valley	3,038	3,496	458	15.1%
51801	Sandburg	1,408	1,428	20	1.4%
50601	Sauk Valley	2,140	1,649	-491	-22.9%
53101	Shawnee	870	913	43	4.9%
51001	South Suburban	960	1,157	197	20.5%
53301	Southeastern	1,575	1,789	214	13.6%
52201	Southwestern	5,589	5,852	263	4.7%
53401	Spoon River	351	692	341	97.2%
50401	Triton	867	1,169	302	34.8%
51601	Waubonsee	2,876	4,081	1,205	41.9%
53901	Wood	<u>592</u>	<u>574</u>	<u>-18</u>	<u>-3.0%</u>
TOTALS		99,343	105,361	6,018	6.1%
Pure					
Minimum		144	227	-2,267	-32.4%
Maximum		9,006	8,894	1,205	131.9%
Median		1,436	1,586	156	13.2%
Standard Deviation		2,094	2,001	473	36.2%
Average		2,070	2,195	125	22.3%

SOURCE OF DATA: Annual Course (AC) Data

Illinois Community College Board  
Table B-3  
AVERAGE DUAL CREDIT CLASS SIZE BY COLLEGE  
FOR FISCAL YEARS 2015 & 2016

<u>District</u>	<u>College</u>	<u>2015</u>	<u>2016</u>	FY 2015 - 2016 1-Year Difference	
				<u>Number</u>	<u>Percent</u>
50301	Black Hawk	11.1	10.4	-0.7	-5.9%
50800	Chicago	(6.2)	(7.7)	(1.5)	(24.8%)
50806	Daley	8.3	7.9	-0.3	-4.2%
50801	Kennedy-King	5.3	7.3	1.9	36.1%
50803	Malcolm X	4.1	7.2	3.1	75.9%
50805	Olive-Harvey	10.4	9.2	-1.2	-11.4%
50804	Truman	8.7	5.6	-3.1	-36.1%
50802	Washington	4.0	6.7	2.7	67.8%
50807	Wright	5.8	11.8	5.9	101.2%
50701	Danville	3.6	4.0	0.4	10.2%
50201	DuPage	15.9	18.5	2.7	16.8%
50901	Elgin	4.5	4.6	0.1	1.3%
51201	Harper	16.4	13.8	-2.6	-15.6%
54001	Heartland	9.2	8.3	-0.9	-10.3%
51901	Highland	10.0	10.9	0.9	9.1%
51401	Illinois Central	17.0	16.9	-0.1	-0.5%
52900	Illinois Eastern	(10.6)	(12.0)	(1.4)	(13.1%)
52904	Frontier	11.9	13.4	1.5	12.8%
52901	Lincoln Trail	9.3	11.4	2.2	23.5%
52902	Olney Central	13.9	13.7	-0.2	-1.5%
52903	Wabash Valley	6.4	8.7	2.3	35.7%
51301	Illinois Valley	7.3	7.0	-0.3	-4.3%
52501	Joliet	14.9	15.4	0.6	3.7%
52001	Kankakee	13.4	16.8	3.4	25.5%
50101	Kaskaskia	13.5	13.8	0.4	2.6%
52301	Kishwaukee	12.0	13.0	1.0	8.8%
53201	Lake County	13.9	11.8	-2.2	-15.6%
51701	Lake Land	11.4	10.8	-0.6	-4.9%
53601	Lewis & Clark	15.6	16.4	0.8	5.3%
52601	Lincoln Land	13.5	12.3	-1.2	-9.2%
53001	Logan	12.8	16.1	3.4	26.3%
52801	McHenry	15.0	19.7	4.6	30.7%
52401	Moraine Valley	16.1	18.4	2.3	14.3%
52701	Morton	11.8	15.1	3.3	28.0%
53501	Oakton	15.0	15.8	0.8	5.5%
50501	Parkland	6.4	7.1	0.7	10.5%
51501	Prairie State	13.0	15.5	2.6	19.9%
52101	Rend Lake	14.9	11.4	-3.5	-23.6%
53701	Richland	7.3	7.3	0.0	-0.2%
51101	Rock Valley	4.2	3.9	-0.3	-6.6%
51801	Sandburg	7.0	8.0	1.0	14.5%
50601	Sauk Valley	6.3	5.0	-1.3	-20.6%
53101	Shawnee	16.1	15.5	-0.6	-4.0%
51001	South Suburban	7.9	7.4	-0.5	-5.7%
53301	Southeastern	6.2	6.8	0.6	10.1%
52201	Southwestern	7.3	5.9	-1.4	-19.1%
53401	Spoon River	4.0	5.6	1.5	38.3%
50401	Triton	7.7	8.2	0.6	7.3%
51601	Waubonsee	7.0	8.3	1.3	18.7%
53901	Wood	<u>6.3</u>	<u>6.6</u>	<u>0.3</u>	<u>4.8%</u>
TOTALS		9.9	9.8	-0.1	-1.4%
Pure					
Minimum		3.6	3.9	-3.5	-36.1%
Maximum		17.0	19.7	5.9	101.2%
Median		9.6	10.6	0.6	5.4%
Standard Deviation		4.1	4.4	1.9	25.1%
Average		10.1	10.7	0.7	9.7%

SOURCE OF DATA: Annual Course (AC) Data



Illinois Community College Board  
Table B-4  
TOP TEN DUAL CREDIT COURSE ENROLLMENTS BY CIP (BASED ON FISCAL YEAR 2016)  
FOR FISCAL YEARS 2015 & 2016

<u>CIP</u>	<u>COURSE NAME</u>	<u>2015</u>	<u>2016</u>	FY 2015 - 2016 1-Year Difference	
				<u>Number</u>	<u>Percent</u>
23.1301	Writing, General (New)*	15,575	16,671	1,096	7.0%
27.0101	Mathematics, General	5,478	6,454	976	17.8%
16.0905	Spanish Language and Literature	4,708	4,975	267	5.7%
23.1304	Rhetoric and Composition (New)*	3,541	3,710	169	4.8%
54.0102	American History (United States) (Moved from 45.0802)	2,952	3,409	457	15.5%
42.0101	Psychology, General	3,851	3,047	-804	-20.9%
48.0508	Welding Technology/Welder	2,728	2,777	49	1.8%
26.0101	Biology/Biological Sciences, General	1,764	2,549	785	44.5%
52.0408	General Office Occupations and Clerical Services	2,172	2,481	309	14.2%
52.0407	Business/Office Automation/Technology/Data Entry	<u>2,686</u>	<u>2,475</u>	<u>-211</u>	<u>-7.9%</u>
	Totals	45,455	48,548	3,093	6.8%
	Grand Total	99,343	105,361	6,018	6.1%
	Percent Top Ten of Grand Total	45.8%	46.1%	0.3%	0.7%

\*CIP Number and Title were changed from 23.0401 English Composition to 23.1301 Writing General in 2010

\*CIP Number and Title were changed from 23.1001 Speech and Rhetorical Studies to 23.1304 Rhetoric and Composition in 2010

SOURCE OF DATA: Annual Course (AC) Data

Illinois Community College Board  
Table B-5  
DUAL CREDIT COURSE COUNT BY COLLEGE IN BACCALAUREATE/TRANSFER EDUCATION  
FOR FISCAL YEARS 2015 & 2016

<u>District</u>	<u>College</u>	<u>2015</u>	<u>2016</u>	FY 2015 - 2016	
				<u>1-Year Difference</u>	<u>Percent</u>
				<u>Number</u>	
50301	Black Hawk	215	189	-26	-12.1%
50800	Chicago	(370)	(518)	(148)	(40.0%)
50806	Daley	56	123	67	119.6%
50801	Kennedy-King	26	39	13	50.0%
50803	Malcolm X	34	45	11	32.4%
50805	Olive-Harvey	27	41	14	51.9%
50804	Truman	49	103	54	110.2%
50802	Washington	104	105	1	1.0%
50807	Wright	74	62	-12	-16.2%
50701	Danville	214	279	65	30.4%
50201	DuPage	142	131	-11	-7.7%
50901	Elgin	14	15	1	7.1%
51201	Harper	60	131	71	118.3%
54001	Heartland	142	127	-15	-10.6%
51901	Highland	34	56	22	64.7%
51401	Illinois Central	181	172	-9	-5.0%
52900	Illinois Eastern	(277)	(228)	(-49)	(-17.7%)
52904	Frontier	148	110	-38	-25.7%
52901	Lincoln Trail	33	32	-1	-3.0%
52902	Olney Central	43	41	-2	-4.7%
52903	Wabash Valley	53	45	-8	-15.1%
51301	Illinois Valley	156	155	-1	-0.6%
52501	Joliet	298	216	-82	-27.5%
52001	Kankakee	30	38	8	26.7%
50101	Kaskaskia	261	259	-2	-0.8%
52301	Kishwaukee	13	17	4	30.8%
53201	Lake County	45	52	7	15.6%
51701	Lake Land	153	162	9	5.9%
53601	Lewis & Clark	296	278	-18	-6.1%
52601	Lincoln Land	135	137	2	1.5%
53001	Logan	68	78	10	14.7%
52801	McHenry	55	67	12	21.8%
52401	Moraine Valley	18	17	-1	-5.6%
52701	Morton	0	6	6	--
53501	Oakton	23	23	0	0.0%
50501	Parkland	244	235	-9	-3.7%
51501	Prairie State	3	4	1	33.3%
52101	Rend Lake	144	180	36	25.0%
53701	Richland	149	176	27	18.1%
51101	Rock Valley	667	805	138	20.7%
51801	Sandburg	161	133	-28	-17.4%
50601	Sauk Valley	253	232	-21	-8.3%
53101	Shawnee	37	41	4	10.8%
51001	South Suburban	19	58	39	205.3%
53301	Southeastern	141	149	8	5.7%
52201	Southwestern	551	771	220	39.9%
53401	Spoon River	79	96	17	21.5%
50401	Triton	77	89	12	15.6%
51601	Waubonsee	307	382	75	24.4%
53901	Wood	<u>80</u>	<u>73</u>	<u>-7</u>	<u>-8.8%</u>
TOTALS		6,112	6,775	663	10.8%
Pure					
Minimum		0	4	-82	-27.5%
Maximum		667	805	220	205.3%
Median		78	104	4	7.1%
Standard Deviation		132	159	45	42.8%
Average		127	141	14	20.1%

SOURCE OF DATA: Annual Course (AC) Data

Illinois Community College Board  
Table B-6  
DUAL CREDIT ENROLLMENT BY COLLEGE IN BACCALAUREATE/TRANSFER EDUCATION  
FOR FISCAL YEARS 2015 & 2016

<u>District</u>	<u>College</u>	<u>2015</u>	<u>2016</u>	FY 2015 - 2016 1-Year Difference	
				<u>Number</u>	<u>Percent</u>
50301	Black Hawk	2,537	2,151	-386	-15.2%
50800	Chicago	(2,308)	(3,813)	(1,505)	(65.2%)
50806	Daley	486	959	473	97.3%
50801	Kennedy-King	124	290	166	133.9%
50803	Malcolm X	167	364	197	118.0%
50805	Olive-Harvey	281	382	101	35.9%
50804	Truman	445	579	134	30.1%
50802	Washington	407	541	134	32.9%
50807	Wright	398	698	300	75.4%
50701	Danville	859	1,262	403	46.9%
50201	DuPage	2,735	2,526	-209	-7.6%
50901	Elgin	85	83	-2	-2.4%
51201	Harper	1,220	2,124	904	74.1%
54001	Heartland	1,351	1,207	-144	-10.7%
51901	Highland	330	629	299	90.6%
51401	Illinois Central	3,052	2,997	-55	-1.8%
52900	Illinois Eastern	(3,448)	(3,166)	(-282)	(-8.2%)
52904	Frontier	2,028	1,695	-333	-16.4%
52901	Lincoln Trail	345	427	82	23.8%
52902	Olney Central	732	637	-95	-13.0%
52903	Wabash Valley	343	407	64	18.7%
51301	Illinois Valley	1,336	1,232	-104	-7.8%
52501	Joliet	5,580	3,984	-1,596	-28.6%
52001	Kankakee	377	678	301	79.8%
50101	Kaskaskia	3,979	4,005	26	0.7%
52301	Kishwaukee	175	265	90	51.4%
53201	Lake County	933	915	-18	-1.9%
51701	Lake Land	2,332	2,332	0	0.0%
53601	Lewis & Clark	5,424	5,239	-185	-3.4%
52601	Lincoln Land	2,279	2,232	-47	-2.1%
53001	Logan	1,047	1,465	418	39.9%
52801	McHenry	1,070	1,689	619	57.9%
52401	Moraine Valley	308	335	27	8.8%
52701	Morton	0	91	91	--
53501	Oakton	396	403	7	1.8%
50501	Parkland	1,570	1,685	115	7.3%
51501	Prairie State	34	97	63	185.3%
52101	Rend Lake	2,314	2,388	74	3.2%
53701	Richland	851	1,097	246	28.9%
51101	Rock Valley	2,737	3,139	402	14.7%
51801	Sandburg	1,116	1,016	-100	-9.0%
50601	Sauk Valley	1,553	881	-672	-43.3%
53101	Shawnee	666	706	40	6.0%
51001	South Suburban	147	511	364	247.6%
53301	Southeastern	948	991	43	4.5%
52201	Southwestern	3,080	3,552	472	15.3%
53401	Spoon River	323	565	242	74.9%
50401	Triton	672	845	173	25.7%
51601	Waubonsee	1,971	3,286	1,315	66.7%
53901	Wood	<u>555</u>	<u>536</u>	<u>-19</u>	<u>-3.4%</u>
TOTALS		61,698	66,118	4,420	7.2%
Pure					
Mininum		0	83	-1,596	-43.3%
Maximum		5,580	5,239	1,315	247.6%
Median		855	937	78	14.7%
Standard Deviation		1,303	1,197	397	55.1%
Average		1,285	1,377	92	32.6%

SOURCE OF DATA: Annual Course (AC) Data

Illinois Community College Board  
Table B-7  
AVERAGE DUAL CREDIT CLASS SIZE BY COLLEGE  
IN BACCALAUREATE/TRANSFER EDUCATION  
FOR FISCAL YEARS 2015 & 2016

<u>District</u>	<u>College</u>	<u>2015</u>	<u>2016</u>	FY 2015 - 2016	
				1-Year Difference	
				<u>Number</u>	<u>Percent</u>
50301	Black Hawk	11.8	11.4	-0.4	-3.6%
50800	Chicago	(6.2)	(7.4)	(1.1)	(18.0%)
50806	Daley	8.7	7.8	-0.9	-10.2%
50801	Kennedy-King	4.8	7.4	2.7	55.9%
50803	Malcolm X	4.9	8.1	3.2	64.7%
50805	Olive-Harvey	10.4	9.3	-1.1	-10.5%
50804	Truman	9.1	5.6	-3.5	-38.1%
50802	Washington	3.9	5.2	1.2	31.7%
50807	Wright	5.4	11.3	5.9	109.3%
50701	Danville	4.0	4.5	0.5	12.7%
50201	DuPage	19.3	19.3	0.0	0.1%
50901	Elgin	6.1	5.5	-0.5	-8.9%
51201	Harper	20.3	16.2	-4.1	-20.3%
54001	Heartland	9.5	9.5	0.0	-0.1%
51901	Highland	9.7	11.2	1.5	15.7%
51401	Illinois Central	16.9	17.4	0.6	3.3%
52900	Illinois Eastern	(12.4)	(13.9)	(1.4)	(11.6%)
52904	Frontier	13.7	15.4	1.7	12.5%
52901	Lincoln Trail	10.5	13.3	2.9	27.6%
52902	Olney Central	17.0	15.5	-1.5	-8.7%
52903	Wabash Valley	6.5	9.0	2.6	39.8%
51301	Illinois Valley	8.6	7.9	-0.6	-7.2%
52501	Joliet	18.7	18.4	-0.3	-1.5%
52001	Kankakee	12.6	17.8	5.3	42.0%
50101	Kaskaskia	15.2	15.5	0.2	1.4%
52301	Kishwaukee	13.5	15.6	2.1	15.8%
53201	Lake County	20.7	17.6	-3.1	-15.1%
51701	Lake Land	15.2	14.4	-0.8	-5.6%
53601	Lewis & Clark	18.3	18.8	0.5	2.8%
52601	Lincoln Land	16.9	16.3	-0.6	-3.5%
53001	Logan	15.4	18.8	3.4	22.0%
52801	McHenry	19.5	25.2	5.8	29.6%
52401	Moraine Valley	17.1	19.7	2.6	15.2%
52701	Morton	--	15.2	--	--
53501	Oakton	17.2	17.5	0.3	1.8%
50501	Parkland	6.4	7.2	0.7	11.4%
51501	Prairie State	11.3	24.3	12.9	114.0%
52101	Rend Lake	16.1	13.3	-2.8	-17.4%
53701	Richland	5.7	6.2	0.5	9.1%
51101	Rock Valley	4.1	3.9	-0.2	-5.0%
51801	Sandburg	6.9	7.6	0.7	10.2%
50601	Sauk Valley	6.1	3.8	-2.3	-38.1%
53101	Shawnee	18.0	17.2	-0.8	-4.3%
51001	South Suburban	7.7	8.8	1.1	13.9%
53301	Southeastern	6.7	6.7	-0.1	-1.1%
52201	Southwestern	5.6	4.6	-1.0	-17.6%
53401	Spoon River	4.1	5.9	1.8	43.9%
50401	Triton	8.7	9.5	0.8	8.8%
51601	Waubonsee	6.4	8.6	2.2	34.0%
53901	Wood	<u>6.9</u>	<u>7.3</u>	<u>0.4</u>	<u>5.8%</u>
TOTALS		10.1	9.8	-0.3	-3.3%
Pure					
Minimum		3.9	3.8	-4.1	-38.1%
Maximum		20.7	25.2	12.9	114.0%
Median		9.7	11.2	0.5	3.3%
Standard Deviation		5.3	5.6	2.8	29.9%
Average		11.1	12.0	0.8	11.5%

SOURCE OF DATA: Annual Course (AC) Data

Illinois Community College Board  
Table B-8  
TOP FIVE DUAL CREDIT COURSE ENROLLMENTS BY COLLEGE  
BACCALAUREATE/TRANSFER, FISCAL YEAR B 2016

District	College	23.1301 Writing, General (New)*	27.0101 Mathematics, General	16.0905 Spanish Language and Literature	23.1304 Rhetoric and Composition (New)**	54.0102 American History (United States)	Total
50301	Black Hawk	1,105	95	89	207	56	1,552
50800	Chicago	1,262	725	169	37	140	2,333
50806	Daley	289	129	118	3	0	539
50801	Kennedy-King	128	25	0	1	10	164
50803	Malcolm X	130	77	32	0	0	239
50805	Olive-Harvey	151	41	0	0	77	269
50804	Truman	113	100	0	10	45	268
50802	Washington	204	65	0	3	2	274
50807	Wright	247	288	19	20	6	580
50701	Danville	300	41	4	69	80	494
50201	DuPage	0	66	317	0	7	390
50901	Elgin	0	0	0	0	0	0
51201	Harper	292	565	585	42	0	1,484
54001	Heartland	357	4	0	90	98	549
51901	Highland	75	23	18	39	73	228
51401	Illinois Central	1,290	129	76	125	315	1,935
52900	Illinois Eastern	756	259	187	207	296	1,705
52904	Frontier	364	151	21	140	65	741
52901	Lincoln Trail	96	74	151	1	2	324
52902	Olney Central	184	30	0	59	129	402
52903	Wabash Valley	112	4	15	7	100	238
51301	Illinois Valley	312	56	1	250	122	741
52501	Joliet	1,936	273	0	79	209	2,497
52001	Kankakee	283	52	38	0	103	476
50101	Kaskaskia	663	380	248	705	168	2,164
52301	Kishwaukee	117	54	0	13	0	184
53201	Lake County	24	0	0	36	0	60
51701	Lake Land	778	467	86	85	0	1,416
53601	Lewis & Clark	1,171	371	1,205	158	442	3,347
52601	Lincoln Land	423	169	164	185	393	1,334
53001	Logan	348	8	290	57	51	754
52801	McHenry	240	26	710	0	0	976
52401	Moraine Valley	54	11	1	0	0	66
52701	Morton	0	0	0	0	0	0
53501	Oakton	0	202	0	0	0	202
50501	Parkland	775	138	1	9	90	1,013
51501	Prairie State	0	0	0	0	0	0
52101	Rend Lake	396	677	52	71	0	1,196
53701	Richland	510	28	7	31	12	588
51101	Rock Valley	342	331	56	115	238	1,082
51801	Sandburg	328	16	0	146	18	508
50601	Sauk Valley	271	74	8	92	2	447
53101	Shawnee	97	104	56	0	38	295
51001	South Suburban	0	0	0	0	0	0
53301	Southeastern	168	17	17	48	47	297
52201	Southwestern	699	203	213	496	168	1,779
53401	Spoon River	252	48	0	45	21	366
50401	Triton	237	182	0	0	112	531
51601	Waubesaee	647	553	291	173	102	1,766
53901	Wood	<u>147</u>	<u>107</u>	<u>86</u>	<u>66</u>	<u>8</u>	<u>414</u>
TOTALS		16,655	6,454	4,975	3,676	3,409	35,169
Grand Total		105,361	105,361	105,361	105,361	105,361	105,361
Percent Top Five of Grand Total		15.8%	6.1%	4.7%	3.5%	3.2%	33.4%

\*CIP Number and Title were changed from 23.0401 English Composition to 23.1301 Writing, General in 2010.

\*\*CIP Number and Title were changed from 23.1001 Speech and Rhetorical Studies to 23.1304 Rhetoric and Composition in 2010

SOURCE OF DATA: Annual Course (AC) Data

Illinois Community College Board  
Table B-9  
DUAL CREDIT COURSE COUNT BY COLLEGE IN CAREER AND TECHNICAL EDUCATION  
FISCAL YEARS 2015 & 2016

<u>District</u>	<u>College</u>	<u>2015</u>	<u>2016</u>	FY 2015 - 2016	
				<u>1-Year Difference</u>	<u>Percent</u>
				<u>Number</u>	
50301	Black Hawk	118	122	4	3.4%
50800	Chicago	(56)	(81)	(25)	(44.6%)
50806	Daley	6	15	9	150.0%
50801	Kennedy-King	1	7	6	600.0%
50803	Malcolm X	9	10	1	11.1%
50805	Olive-Harvey	0	4	4	--
50804	Truman	11	15	4	36.4%
50802	Washington	14	14	0	0.0%
50807	Wright	15	16	1	6.7%
50701	Danville	308	297	-11	-3.6%
50201	DuPage	339	303	-36	-10.6%
50901	Elgin	69	65	-4	-5.8%
51201	Harper	129	165	36	27.9%
54001	Heartland	42	57	15	35.7%
51901	Highland	97	104	7	7.2%
51401	Illinois Central	50	52	2	4.0%
52900	Illinois Eastern	(129)	(126)	(-3)	(-2.3%)
52904	Frontier	58	49	-9	-15.5%
52901	Lincoln Trail	12	15	3	25.0%
52902	Olney Central	16	16	0	0.0%
52903	Wabash Valley	43	46	3	7.0%
51301	Illinois Valley	43	35	-8	-18.6%
52501	Joliet	173	91	-82	-47.4%
52001	Kankakee	18	16	-2	-11.1%
50101	Kaskaskia	268	258	-10	-3.7%
52301	Kishwaukee	47	44	-3	-6.4%
53201	Lake County	94	99	5	5.3%
51701	Lake Land	163	169	6	3.7%
53601	Lewis & Clark	282	264	-18	-6.4%
52601	Lincoln Land	103	108	5	4.9%
53001	Logan	43	43	0	0.0%
52801	McHenry	46	36	-10	-21.7%
52401	Moraine Valley	119	126	7	5.9%
52701	Morton	17	9	-8	-47.1%
53501	Oakton	30	34	4	13.3%
50501	Parkland	92	101	9	9.8%
51501	Prairie State	77	71	-6	-7.8%
52101	Rend Lake	47	87	40	85.1%
53701	Richland	77	113	36	46.8%
51101	Rock Valley	60	91	31	51.7%
51801	Sandburg	40	45	5	12.5%
50601	Sauk Valley	85	96	11	12.9%
53101	Shawnee	17	18	1	5.9%
51001	South Suburban	103	98	-5	-4.9%
53301	Southeastern	114	114	0	0.0%
52201	Southwestern	218	224	6	2.8%
53401	Spoon River	8	28	20	250.0%
50401	Triton	36	53	17	47.2%
51601	Waubonsee	103	108	5	4.9%
53901	Wood	<u>14</u>	<u>14</u>	<u>0</u>	<u>0.0%</u>
TOTALS		3,874	3,965	91	2.3%
Pure					
Minimum		0	4	-82	-47.4%
Maximum		339	303	40	600.0%
Median		49	55	3	4.9%
Standard Deviation		82	77	18	96.3%
Average		81	83	2	26.9%

SOURCE OF DATA: Annual Course (AC) Data

Illinois Community College Board  
Table B-10  
DUAL CREDIT ENROLLMENT BY COLLEGE IN CAREER AND TECHNICAL EDUCATION  
FISCAL YEARS 2015 & 2016

<u>District</u>	<u>College</u>	<u>2015</u>	<u>2016</u>	FY 2015 - 2016 1-Year Difference	
				<u>Number</u>	<u>Percent</u>
50301	Black Hawk	1,152	1,092	-60	-5.2%
50800	Chicago	(315)	(790)	(475)	(150.8%)
50806	Daley	27	135	108	400.0%
50801	Kennedy-King	20	44	24	120.0%
50803	Malcolm X	9	32	23	255.6%
50805	Olive-Harvey	0	33	33	--
50804	Truman	76	76	0	0.0%
50802	Washington	61	251	190	311.5%
50807	Wright	122	219	97	79.5%
50701	Danville	1,037	1,044	7	0.7%
50201	DuPage	4,893	5,513	620	12.7%
50901	Elgin	289	282	-7	-2.4%
51201	Harper	1,878	1,973	95	5.1%
54001	Heartland	346	316	-30	-8.7%
51901	Highland	976	1,111	135	13.8%
51401	Illinois Central	872	789	-83	-9.5%
52900	Illinois Eastern	(866)	(1,089)	(223)	(25.8%)
52904	Frontier	427	443	16	3.7%
52901	Lincoln Trail	72	111	39	54.2%
52902	Olney Central	91	146	55	60.4%
52903	Wabash Valley	276	389	113	40.9%
51301	Illinois Valley	116	95	-21	-18.1%
52501	Joliet	1,417	746	-671	-47.4%
52001	Kankakee	267	231	-36	-13.5%
50101	Kaskaskia	3,150	3,146	-4	-0.1%
52301	Kishwaukee	544	530	-14	-2.6%
53201	Lake County	1,004	860	-144	-14.3%
51701	Lake Land	1,267	1,252	-15	-1.2%
53601	Lewis & Clark	3,582	3,655	73	2.0%
52601	Lincoln Land	945	783	-162	-17.1%
53001	Logan	372	488	116	31.2%
52801	McHenry	450	337	-113	-25.1%
52401	Moraine Valley	1,899	2,297	398	21.0%
52701	Morton	201	136	-65	-32.3%
53501	Oakton	400	500	100	25.0%
50501	Parkland	580	691	111	19.1%
51501	Prairie State	1,002	1,068	66	6.6%
52101	Rend Lake	531	652	121	22.8%
53701	Richland	796	1,005	209	26.3%
51101	Rock Valley	301	357	56	18.6%
51801	Sandburg	292	412	120	41.1%
50601	Sauk Valley	587	768	181	30.8%
53101	Shawnee	204	207	3	1.5%
51001	South Suburban	813	646	-167	-20.5%
53301	Southeastern	627	798	171	27.3%
52201	Southwestern	2,509	2,300	-209	-8.3%
53401	Spoon River	28	127	99	353.6%
50401	Triton	195	324	129	66.2%
51601	Waubonsee	905	795	-110	-12.2%
53901	Wood	<u>37</u>	<u>38</u>	<u>1</u>	<u>2.7%</u>
TOTALS		37,645	39,243	1,598	4.2%
Pure					
Minimum		0	32	-671	-47.4%
Maximum		4,893	5,513	620	400.0%
Median		439	494	29	5.1%
Standard Deviation		983	1,032	172	95.0%
Average		784	818	33	38.6%

SOURCE OF DATA: Annual Course (AC) Data

Illinois Community College Board  
Table B-11  
AVERAGE DUAL CREDIT CLASS SIZE BY COLLEGE  
IN CAREER AND TECHNICAL EDUCATION  
FISCAL YEARS 2015 & 2016

<u>District</u>	<u>College</u>	<u>2015</u>	<u>2016</u>	FY 2015 - 2016 1-Year Difference	
				<u>Number</u>	<u>Percent</u>
50301	Black Hawk	9.8	9.0	-0.8	-8.3%
50800	Chicago	(5.6)	(9.8)	(4.1)	(73.4%)
50806	Daley	4.5	9.0	4.5	100.0%
50801	Kennedy-King	20.0	6.3	-13.7	-68.6%
50803	Malcolm X	1.0	3.2	2.2	220.0%
50805	Olive-Harvey	--	8.3	--	--
50804	Truman	6.9	5.1	-1.8	-26.7%
50802	Washington	4.4	17.9	13.6	311.5%
50807	Wright	8.1	13.7	5.6	68.3%
50701	Danville	3.4	3.5	0.1	4.4%
50201	DuPage	14.4	18.2	3.8	26.1%
50901	Elgin	4.2	4.3	0.2	3.6%
51201	Harper	14.6	12.0	-2.6	-17.9%
54001	Heartland	8.2	5.5	-2.7	-32.7%
51901	Highland	10.1	10.7	0.6	6.2%
51401	Illinois Central	17.4	15.2	-2.3	-13.0%
52900	Illinois Eastern	(6.7)	(8.6)	(1.9)	(28.7%)
52904	Frontier	7.4	9.0	1.7	22.8%
52901	Lincoln Trail	6.0	7.4	1.4	23.3%
52902	Olney Central	5.7	9.1	3.4	60.4%
52903	Wabash Valley	6.4	8.5	2.0	31.8%
51301	Illinois Valley	2.7	2.7	0.0	0.6%
52501	Joliet	8.2	8.2	0.0	0.1%
52001	Kankakee	14.8	14.4	-0.4	-2.7%
50101	Kaskaskia	11.8	12.2	0.4	3.7%
52301	Kishwaukee	11.6	12.0	0.5	4.1%
53201	Lake County	10.7	8.7	-2.0	-18.7%
51701	Lake Land	7.8	7.4	-0.4	-4.7%
53601	Lewis & Clark	12.7	13.8	1.1	9.0%
52601	Lincoln Land	9.2	7.3	-1.9	-21.0%
53001	Logan	8.7	11.3	2.7	31.2%
52801	McHenry	9.8	9.4	-0.4	-4.3%
52401	Moraine Valley	16.0	18.2	2.3	14.2%
52701	Morton	11.8	15.1	3.3	27.8%
53501	Oakton	13.3	14.7	1.4	10.3%
50501	Parkland	6.3	6.8	0.5	8.5%
51501	Prairie State	13.0	15.0	2.0	15.6%
52101	Rend Lake	11.3	7.5	-3.8	-33.7%
53701	Richland	10.3	8.9	-1.4	-14.0%
51101	Rock Valley	5.0	3.9	-1.1	-21.8%
51801	Sandburg	7.3	9.2	1.9	25.4%
50601	Sauk Valley	6.9	8.0	1.1	15.8%
53101	Shawnee	12.0	11.5	-0.5	-4.2%
51001	South Suburban	7.9	6.6	-1.3	-16.5%
53301	Southeastern	5.5	7.0	1.5	27.3%
52201	Southwestern	11.5	10.3	-1.2	-10.8%
53401	Spoon River	3.5	4.5	1.0	29.6%
50401	Triton	5.4	6.1	0.7	12.9%
51601	Waubonsee	8.8	7.4	-1.4	-16.2%
53901	Wood	<u>2.6</u>	<u>2.7</u>	<u>0.1</u>	<u>2.7%</u>
TOTALS		9.7	9.9	0.2	1.9%
Pure					
Mininum		1.0	2.7	-13.7	-68.6%
Maximum		20.0	18.2	13.6	311.5%
Median		8.2	8.8	0.4	4.1%
Standard Deviation		4.1	4.1	3.4	60.0%
Average		8.9	9.3	0.4	16.6%

SOURCE OF DATA: Annual Course (AC) Data



Illinois Community College Board  
Table B-12  
TOP FIVE DUAL CREDIT COURSE ENROLLMENTS BY COLLEGE  
CAREER & TECHNICAL EDUCATION, FISCAL YEAR 2016

District	College	48.0508 Welding Technology/Welder	52.0408 General Office Occupations and Clerical Services	52.0407 Business/Office Automation/Technology/Data Entry	51.3902 Nurse/Nursing Assistant/Aide and Patient Care Assistant (Moved from 51.1614)	11.0201 Computer Programming/Programmer, General	Total
50301	Black Hawk	561	0	22	94	38	715
50800	Chicago	(0)	(0)	(153)	(6)	(45)	(204)
50806	Daley	0	0	63	0	34	97
50801	Kennedy-King	0	0	0	0	0	0
50803	Malcolm X	0	0	0	6	7	13
50805	Olive-Harvey	0	0	0	0	0	0
50804	Truman	0	0	13	0	1	14
50802	Washington	0	0	1	0	2	3
50807	Wright	0	0	76	0	1	77
50701	Danville	37	4	8	0	60	109
50201	DuPage	0	377	0	45	245	667
50901	Elgin	20	0	2	6	12	40
51201	Harper	0	0	78	200	0	278
54001	Heartland	23	0	0	63	42	128
51901	Highland	50	0	43	76	3	172
51401	Illinois Central	127	0	0	169	0	296
52900	Illinois Eastern	(163)	(0)	(0)	(141)	(17)	(321)
52904	Frontier	18	0	0	92	17	127
52901	Lincoln Trail	44	0	0	1	0	45
52902	Olney Central	69	0	0	12	0	81
52903	Wabash Valley	32	0	0	36	0	68
51301	Illinois Valley	3	13	10	12	1	39
52501	Joliet	134	0	0	179	14	327
52001	Kankakee	29	0	0	77	0	106
50101	Kaskaskia	76	781	1052	73	34	2,016
52301	Kishwaukee	46	0	0	71	0	117
53201	Lake County	28	0	0	105	0	133
51701	Lake Land	154	0	30	168	22	374
53601	Lewis & Clark	263	841	112	0	71	1,287
52601	Lincoln Land	63	11	0	12	14	100
53001	Logan	67	24	0	69	0	160
52801	McHenry	0	0	0	74	0	74
52401	Moraine Valley	23	0	318	0	0	341
52701	Morton	0	0	95	0	0	95
53501	Oakton	0	0	0	28	35	63
50501	Parkland	29	5	0	44	63	141
51501	Prairie State	25	340	0	0	0	365
52101	Rend Lake	39	11	0	47	5	102
53701	Richland	49	0	216	31	0	296
51101	Rock Valley	16	0	0	45	50	111
51801	Sandburg	109	0	12	0	0	121
50601	Sauk Valley	47	0	6	204	0	257
53101	Shawnee	27	0	0	26	0	53
51001	South Suburban	0	68	17	0	404	489
53301	Southeastern	113	6	15	19	9	162
52201	Southwestern	303	0	285	69	449	1,106
53401	Spoon River	46	0	0	8	0	54
50401	Triton	0	0	1	62	0	63
51601	Waubensee	91	0	0	66	6	163
53901	Wood	<u>16</u>	<u>0</u>	<u>0</u>	<u>12</u>	<u>0</u>	<u>28</u>
TOTALS		2,777	2,481	2,475	2,301	1,639	11,673
Grand Total		105,361	105,361	105,361	105,361	105,361	105,361
Percent Top Five of Grand Total		2.6%	2.4%	2.3%	2.2%	1.6%	11.1%

SOURCE OF DATA: ICCB Annual Course (AC) Data

Illinois Community College Board  
Table B-13  
STATEWIDE DUAL CREDIT ENROLLMENT BY PROGRAM (6-DIGIT CIP)  
FOR FISCAL YEARS 2015 & 2016

CIP	COURSE NAME	2015	2016	FY 2015 - 2016 1-Year Difference	
				Number	Percent
01.0101	Agricultural Business and Management, General	134	177	43	32.1%
01.0103	Agricultural Economics	74	40	-34	-45.9%
01.0106	Agricultural Business Technology	1	0	-1	-100.0%
01.0201	Agricultural Mechanization, General	151	155	4	2.6%
01.0301	Agricultural Production Operations, General	102	139	37	36.3%
01.0302	Animal/Livestock Husbandry and Production	123	202	79	64.2%
01.0304	Crop Production	1	7	6	600.0%
01.0601	Applied Horticulture and Horticultural Business Services, General	254	238	-16	-6.3%
01.0602	Arboriculture (Cross to 01.0699 for IPEDS)	13	25	12	92.3%
01.0603	Ornamental Horticulture	307	284	-23	-7.5%
01.0604	Greenhouse Operation Management	75	29	-46	-61.3%
01.0605	Landscaping and Groundskeeping	89	44	-45	-50.6%
01.0607	Turf and Turfgrass Management	0	9	9	--
01.0901	Animal Sciences, General (Moved from 02.0201)	13	24	11	84.6%
01.1102	Agronomy and Crop Science (Moved from 02.0402)	68	49	-19	-27.9%
01.1103	Horticultural Science (Moved from 02.0403)	109	34	-75	-68.8%
01.1201	Soil Science and Agronomy, General (Moved from 02.0501)	2	0	-2	-100.0%
01.9994		22	22	0	0.0%
01.9997	Topics.	6	0	-6	-100.0%
01.9999	Agriculture, Agriculture Operations, and Related Sciences, Other	5	5	0	0.0%
03.0201	Natural Resources Management and Policy	0	12	12	--
03.0601	Wildlife and Wildlands Science and Management	25	10	-15	-60.0%
04.0201	Architecture (BArch, BA/BS, MArch, MA/MS, PhD)	8	20	12	150.0%
05.0101	African Studies	1	0	-1	-100.0%
5.0103	Asian Studies/Civilization	1	0	-1	-100.0%
05.0107	Latin American Studies	0	3	3	--
05.0108	Near and Middle Eastern Studies	0	1	1	--
05.0201	African-American/Black Studies	98	28	-70	-71.4%
05.0202	American Indian/Native American Studies	0	1	1	--
5.0299	Ethnic, Cultural Minority, and Gender Studies, Other	1	4	3	300.0%
09.0100		0	1	1	--
09.0102	Mass Communication/Media Studies (Moved from 09.0403)	33	5	-28	-84.8%
09.0401	Journalism	347	287	-60	-17.3%
09.0402	Broadcast Journalism	9	4	-5	-55.6%
09.0701	Radio and Television	108	82	-26	-24.1%
09.0702	Digital Communication and Media/Multimedia (New)	1	0	-1	-100.0%
09.0903	Advertising (Moved from 09.0201)	16	0	-16	-100.0%
09.9998	Internships.	1	8	7	700.0%
10.0201	Photographic and Film/Video Technology/Technician and Assistant (Moved from 10.0103)	183	181	-2	-1.1%
10.0202	Radio and Television Broadcasting Technology/Technician (Moved from 10.0104)	21	26	5	23.8%
10.0203	Recording Arts Technology/Technician	0	1	1	--
10.0301	Graphic Communications, General (New)	36	13	-23	-63.9%
10.0303	Prepress/Desktop Publishing and Digital Imaging Design (Moved from 48.0212)	483	477	-6	-1.2%
10.0304	Animation, Interactive Tech, Video Graphics and Special Effects (New)	222	169	-53	-23.9%
10.0305	Graphic and Printing Equipment Operator, General Production (Moved from 48.0201)	41	50	9	22.0%
10.9999	Communications Technologies/Technicians and Support Services, Other	19	14	-5	-26.3%
11.0101	Computer and Information Sciences, General	880	1,577	697	79.2%
11.0103	Information Technology (New)	133	97	-36	-27.1%
11.0201	Computer Programming/Programmer, General	1,155	1,639	484	41.9%
11.0202	Computer Programming, Specific Applications (Moved from 521202)	87	65	-22	-25.3%
11.0203	Computer Programming, Vendor/Product Certification	139	80	-59	-42.4%
11.0301	Data Processing and Data Processing Technology/Technician	89	74	-15	-16.9%
11.0401	Information Sciences/Studies	4	0	-4	-100.0%
11.0501	Computer Systems Analysis/Analyst (Moved from 521203)	13	10	-3	-23.1%
11.0601	Data Entry/Microcomputer Applications, General (New)	285	363	78	27.4%
11.0602	Word Processing	24	23	-1	-4.2%
11.0801	Web Page, Digital/Multimedia and Information Resources Design (New)	748	562	-186	-24.9%
11.0802	Data Modeling/Warehousing and Database Administration (New)	24	11	-13	-54.2%
11.0803	Computer Graphics	51	91	40	78.4%
11.0901	Computer Systems Networking and Telecommunications (Moved from 521204)	1,716	1,420	-296	-17.2%
11.1002	System, Networking, and LAN/WAN Management/Manager (New)	15	0	-15	-100.0%
11.1003	Computer and Information Systems Security/Information Assurance	19	13	-6	-31.6%
11.1004	Web/Multimedia Management and Webmaster	155	59	-96	-61.9%
11.1099	Computer/Information Technology Services Administration and Management, Other (Moved from 521205)	73	82	9	12.3%
11.9997		13	18	5	38.5%

Illinois Community College Board  
Table B-13  
STATEWIDE DUAL CREDIT ENROLLMENT BY PROGRAM (6-DIGIT CIP)  
FOR FISCAL YEARS 2015 & 2016

CIP	COURSE NAME	2015	2016	FY 2015 - 2016 1-Year Difference	
				Number	Percent
11.9998		1	0	-1	-100.0%
12.0401	Cosmetology/Cosmetologist, General (Moved from 12.0403)	843	815	-28	-3.3%
12.0406	Make-up Artist/Specialist	3	0	-3	-100.0%
12.0409	Aesthetician/Esthetician and Skin Care Specialist (New)	149	155	6	4.0%
12.0412	Salon/Beauty Salon Management/Manager (New)	295	311	16	5.4%
12.0501	Baking and Pastry Arts/Baker/Pastry Chef	7	6	-1	-14.3%
12.0503	Culinary Arts/Chef Training	313	229	-84	-26.8%
12.0504	Restaurant, Culinary, and Catering Management/Manager	412	641	229	55.6%
12.0505	Food Preparation/Professional Cooking/Kitchen Assistant	0	54	54	--
12.9994	Career Exploration.	0	0	0	--
12.9996	Certification/Licensure Review.	66	37	-29	-43.9%
12.9998	Internships. (1.2 only)	0	37	37	--
13.0101	Education, General	116	134	18	15.5%
13.0501	Educational/Instructional Media Design (Moved from 10.0101)	0	2	2	--
13.0901	Social and Philosophical Foundations of Education	288	302	14	4.9%
13.1001	Special Education and Teaching, General	0	3	3	--
13.1202	Elementary Education and Teaching	4	5	1	25.0%
13.1209	Kindergarten/Preschool Education and Teaching (Moved from 13.1204)	15	10	-5	-33.3%
13.1210	Early Childhood Education and Teaching (Moved from 13.1204)	108	87	-21	-19.4%
13.1307	Health Teacher Education	340	667	327	96.2%
13.1501	Teacher Assistant/Aide	121	134	13	10.7%
13.9997	Topics.	73	4	-69	-94.5%
13.9998	Internships.	0	10	10	--
14.0101	Engineering, General	25	22	-3	-12.0%
14.1001	Electrical and Electronics Engineering	4	3	-1	-25.0%
14.1101	Engineering Mechanics	9	16	7	77.8%
14.1201	Engineering Physics	8	13	5	62.5%
14.4201	Mechatronics, Robotics, and Automation Engineering (New)	9	16	7	77.8%
15.0000	Engineering Technology, General (Moved from 15.1101)	16	40	24	150.0%
15.0101	Architectural Engineering Technology/Technician (See also 15.1303)	1	8	7	700.0%
15.0201	Civil Engineering Technology/Technician	0	23	23	--
15.0303	Electrical, Electronic and Communications Engineering Technology/Technician	344	301	-43	-12.5%
15.0304	Laser and Optical Technology/Technician	22	16	-6	-27.3%
15.0305	Telecommunications Technology/Technician	10	0	-10	-100.0%
15.0310	Telecommunication Electronics Technology (Cross to 15.0305 for IPEDS)	0	0	0	--
15.0403	Electromechanical Technology/Electromechanical Engineering Technology	0	1	1	--
15.0405	Robotics Technology/Technician	5	14	9	180.0%
15.0410	Fluid Power Technology (Cross to 15.1103 for IPEDS)	2	7	5	250.0%
15.0411	Automated Manufacturing Technology (Cross to 15.0499 for IPEDS)	88	49	-39	-44.3%
15.0503	Energy Management and Systems Technology/Technician	0	2	2	--
15.0612	Industrial Technology/Technician	11	0	-11	-100.0%
15.0613	Manufacturing Technology/Technician (New)	175	227	52	29.7%
15.0701	Occupational Safety and Health Technology/Technician	145	80	-65	-44.8%
15.0702	Quality Control Technology/Technician	78	76	-2	-2.6%
15.0703	Industrial Safety Technology/Technician	30	9	-21	-70.0%
15.0805	Mechanical Engineering/Mechanical Technology/Technician	103	126	23	22.3%
15.0901	Mining Technology/Technician	13	19	6	46.2%
15.1201	Computer Engineering Technology/Technician (New)	231	204	-27	-11.7%
15.1203	Computer Hardware Technology/Technician (New)	60	93	33	55.0%
15.1301	Drafting and Design Technology/Technician, General (Moved from 48.0101)	591	589	-2	-0.3%
15.1302	CAD/CADD Drafting and/or Design Technology/Technician (New)	896	1,008	112	12.5%
15.1303	Architectural Drafting and Architectural CAD/CADD (Moved from 48.0102)	68	63	-5	-7.4%
15.1305	Electrical/Electronics Drafting and Electrical/Electronics CAD/CADD (Moved from 48.0104)	22	7	-15	-68.2%
15.1306	Mechanical Drafting and Mechanical Drafting CAD/CADD (Moved from 48.0105)	21	14	-7	-33.3%
15.1601	Nanotechnology (New)	31	34	3	9.7%
15.9997	Topics.	81	124	43	53.1%
15.9999	Engineering Technologies and Engineering-Related Fields, Other	0	30	30	--
16.0103	Language Interpretation and Translation	26	6	-20	-76.9%
16.0301	Chinese Language and Literature	12	9	-3	-25.0%
16.0302	Japanese Language and Literature	1	4	3	300.0%
16.0501	German Language and Literature	134	161	27	20.1%
16.0901	French Language and Literature	326	267	-59	-18.1%
16.0905	Spanish Language and Literature	4,708	4,975	267	5.7%
16.1101	Arabic Language and Literature	0	1	1	--
16.1203	Latin Language and Literature	1	1	0	0.0%

Illinois Community College Board  
Table B-13  
STATEWIDE DUAL CREDIT ENROLLMENT BY PROGRAM (6-DIGIT CIP)  
FOR FISCAL YEARS 2015 & 2016

CIP	COURSE NAME	2015	2016	FY 2015 - 2016 1-Year Difference	
				Number	Percent
16.1601	American Sign Language (ASL)	0	4	4	--
16.1603	Sign Language Interpretation and Translation (Moved from 51.0205)	32	36	4	12.5%
16.9996		13	27	14	107.7%
19.0402	Consumer Economics	425	515	90	21.2%
19.0501	Food, Nutrition, and Wellness Studies, General	7	8	1	14.3%
19.0504	Human Nutrition (New)	91	116	25	27.5%
19.0706	Child Development	0	10	10	--
19.0708	Child Care and Support Services Management	0	2	2	--
19.0709	Child Care Provider/Assistant (Moved from 20.0202)	582	531	-51	-8.8%
19.0901	Apparel and Textiles, General	68	61	-7	-10.3%
19.0902	Apparel and Textile Manufacture	17	7	-10	-58.8%
19.9997	Topics.	29	0	-29	-100.0%
19.9998	Internships.	5	5	0	0.0%
22.0302	Legal Assistant/Paralegal (Moved from 22.0103)	0	2	2	--
23.0101	English Language and Literature, General	193	268	75	38.9%
23.1301	Writing, General (New)	15,575	16,671	1,096	7.0%
23.1302	Creative Writing (Moved from 23.0501)	33	24	-9	-27.3%
23.1303	Professional, Technical, Business, and Scientific Writing (Moved from 23.1101)	49	85	36	73.5%
23.1304	Rhetoric and Composition	3,541	3,710	169	4.8%
23.1402	American Literature (United States) (Moved from 23.0701)	459	531	72	15.7%
23.1404	English Literature (British and Commonwealth) (Moved from 23.0801)	31	189	158	509.7%
23.9997	Topics.	24	0	-24	-100.0%
24.0102	General Studies [Curriculum designation for AGS, AGE, and ALS (general associate) degree curricula]	1,167	926	-241	-20.7%
24.0103	Humanities/Humanistic Studies	245	459	214	87.3%
24.0105	Orientation Courses (Cross to dedicated CIP for IPEDS)	900	1,060	160	17.8%
24.0198	Internships.	48	44	-4	-8.3%
24.0199	Liberal Arts and Sciences, General Studies and Humanities, Other	0	2	2	--
24.9997	Topics. (1.2 only)	17	54	37	217.6%
26.0101	Biology/Biological Sciences, General	1,764	2,549	785	44.5%
26.0301	Botany/Plant Biology	8	13	5	62.5%
26.0403	Anatomy (Moved from 26.0601)	942	1,006	64	6.8%
26.0502	Microbiology, General (New)	34	36	2	5.9%
26.0701	Zoology/Animal Biology	13	17	4	30.8%
26.0801	Genetics, General (New)	4	3	-1	-25.0%
26.1001	Pharmacology (Moved from 26.0705)	20	30	10	50.0%
26.1301	Ecology (Moved from 26.0603)	132	75	-57	-43.2%
26.1302	Marine Biology and Biological Oceanography (Moved from 26.0607)	109	103	-6	-5.5%
26.1305	Environmental Biology (New)	513	310	-203	-39.6%
26.9997		2	0	-2	-100.0%
27.0101	Mathematics, General	5,478	6,454	976	17.8%
27.0103	Analysis and Functional Analysis (New)	67	58	-9	-13.4%
27.0199	Mathematics, Other (New)	2	0	-2	-100.0%
27.0301	Applied Mathematics	1,145	1,292	147	12.8%
27.0501	Statistics, General	1,407	1,724	317	22.5%
30.0101	Biological and Physical Sciences	59	77	18	30.5%
31.0101	Parks, Recreation, and Leisure Studies	1	0	-1	-100.0%
31.0501	Health and Physical Education	2,384	2,456	72	3.0%
31.0504	Sport and Fitness Administration/ Management	4	7	3	75.0%
38.0101	Philosophy	175	272	97	55.4%
38.0102	Logic (New)	96	150	54	56.3%
38.0103	Ethics (New)	103	178	75	72.8%
38.0201	Religion/Religious Studies	114	144	30	26.3%
40.0101	Physical Sciences	10	37	27	270.0%
40.0201	Astronomy	87	153	66	75.9%
40.0401	Atmospheric Sciences and Meteorology, General	8	7	-1	-12.5%
40.0501	Chemistry, General	764	842	78	10.2%
40.0503	Inorganic Chemistry	256	219	-37	-14.5%
40.0504	Organic Chemistry	18	24	6	33.3%
40.0599	Chemistry, Other	16	22	6	37.5%
40.0601	Geology/Earth Science, General	543	587	44	8.1%
40.0607	Oceanography, Chemical and Physical (Moved from 40.0702)	58	38	-20	-34.5%
40.0801	Physics, General	544	607	63	11.6%
42.0101	Psychology, General	3,851	3,047	-804	-20.9%
42.2701	Cognitive Psychology and Psycholinguistics (Moved from 42.0301)	34	74	40	117.6%
42.2703	Developmental and Child Psychology (Moved from 42.0701)	376	412	36	9.6%

Illinois Community College Board  
Table B-13  
STATEWIDE DUAL CREDIT ENROLLMENT BY PROGRAM (6-DIGIT CIP)  
FOR FISCAL YEARS 2015 & 2016

CIP	COURSE NAME	2015	2016	FY 2015 - 2016 1-Year Difference	
				Number	Percent
42.2707	Social Psychology (Moved from 42.1601)	14	25	11	78.6%
42.2806	Educational Psychology (Moved from 42.1801)	3	10	7	233.3%
43.0102	Corrections	174	111	-63	-36.2%
43.0103	Criminal Justice/Law Enforcement Administration	386	267	-119	-30.8%
43.0104	Criminal Justice/Safety Studies	203	236	33	16.3%
43.0106	Forensic Science and Technology	5	1	-4	-80.0%
43.0107	Criminal Justice/Police Science	798	1,089	291	36.5%
43.0199	Corrections and Criminal Justice, Other	0	1	1	--
43.0201	Fire Protection and Safety Technology/Technician	140	107	-33	-23.6%
43.0202	Fire Services Administration	17	10	-7	-41.2%
43.0203	Fire Science/Fire-fighting	397	500	103	25.9%
43.0301	Civil Defense (Cross to 43.0199 for IPEDS)	1	1	0	0.0%
43.9994	Career Exploration.	127	114	-13	-10.2%
43.9997	Topics.	38	11	-27	-71.1%
43.9998	Internship.	12	5	-7	-58.3%
44.0701	Social Work (Cross to 44.9999 for IPEDS)	1	0	-1	-100.0%
45.0101	Social Sciences, General	123	130	7	5.7%
45.0201	Anthropology	24	116	92	383.3%
45.0401	Criminology	36	118	82	227.8%
45.0501	Demography and Population Studies	0	20	20	--
45.0601	Economics, General	500	498	-2	-0.4%
45.0701	Geography	159	96	-63	-39.6%
45.0901	International Relations and Affairs	93	31	-62	-66.7%
45.1001	Political Science and Government, General	1,813	1,212	-601	-33.1%
45.1101	Sociology	1,211	1,131	-80	-6.6%
45.9997	Topics.	9	20	11	122.2%
46.0000	Construction Trades, General	0	22	22	--
46.0201	Carpentry/Carpenter	459	433	-26	-5.7%
46.0299	Carpenter/Construction, Other.	52	58	6	11.5%
46.0302	Electrician	2	10	8	400.0%
46.0401	Building/Property Management	32	62	30	93.8%
46.0403	Building Home/Construction Inspection/Inspector	6	1	-5	-83.3%
47.0103	Communication Systems Installation and Repair Technology	8	36	28	350.0%
47.0104	Computer Installation and Repair Technology/Technician	441	417	-24	-5.4%
47.0105	Industrial Electronics Technology/Technician	0	12	12	--
47.0199	Electrical/Electronics Maintenance and Repair Technology/Other	93	68	-25	-26.9%
47.0201	Heating, AC, Ventilation and Refrigeration Maintenance Tech (HAC, HACR, HVAC, HVACR)	40	44	4	10.0%
47.0303	Industrial Mechanics and Maintenance Technology	22	15	-7	-31.8%
47.0603	Autobody/Collision and Repair Technology/Technician	418	297	-121	-28.9%
47.0604	Automobile/Automotive Mechanics Technology/Technician	1,539	1,528	-11	-0.7%
47.0605	Diesel Mechanics Technology/Technician	58	88	30	51.7%
47.0606	Small Engine Mechanics and Repair Technology/Technician	71	25	-46	-64.8%
47.0609	Avionics Maintenance Technology/Technician	15	36	21	140.0%
47.9996	Certification/Licensure Review.	0	1	1	--
47.9997	Topics. (1.2 only)	24	16	-8	-33.3%
47.9999	Mechanic and Repair Technologies/Technicians, Other	0	21	21	--
48.0501	Machine Tool Technology/Machinist	32	54	22	68.8%
48.0503	Machine Shop Technology/Assistant	668	835	167	25.0%
48.0508	Welding Technology/Welder	2,728	2,777	49	1.8%
48.0520	Numerical Control (NOT CNC) (Cross to 48.0599 for IPEDS)	38	43	5	13.2%
48.0702	Furniture Design and Manufacturing	0	2	2	--
48.9995	Supervised Independent Study. (1.2 only)	8	0	-8	-100.0%
48.9997	Topics. (1.2 only)	8	8	0	0.0%
49.0102	Airline/Commercial/Professional Pilot and Flight Crew	11	9	-2	-18.2%
49.0107	Aircraft Pilot (Private) (moved to 36.0119)	15	18	3	20.0%
50.0101	Visual and Performing Arts, General	11	25	14	127.3%
50.0301	Dance, General	1	0	-1	-100.0%
50.0302		1	0	-1	-100.0%
50.0401	Design and Visual Communications, General	307	459	152	49.5%
50.0406	Commercial Photography	522	641	119	22.8%
50.0409	Graphic Design	0	1	1	--
50.0501	Drama and Dramatics/Theatre Arts, General.	103	99	-4	-3.9%
50.0502	Technical Theatre/Theatre Design and Technology	1	1	0	0.0%
50.0506	Acting (New)	9	49	40	444.4%
50.0599	Dramatic/Theatre Arts and Stagecraft, Other	1	0	-1	-100.0%

Illinois Community College Board  
Table B-13  
STATEWIDE DUAL CREDIT ENROLLMENT BY PROGRAM (6-DIGIT CIP)  
FOR FISCAL YEARS 2015 & 2016

CIP	COURSE NAME	2015	2016	FY 2015 - 2016 1-Year Difference	
				Number	Percent
50.0601	Film/Cinema Studies	5	12	7	140.0%
50.0602	Cinematography and Film/Video Production	165	176	11	6.7%
50.0605	Photography	8	13	5	62.5%
50.0701	Art/Art Studies, General	289	442	153	52.9%
50.0703	Art History, Criticism and Conservation	164	141	-23	-14.0%
50.0705	Drawing	49	21	-28	-57.1%
50.0709	Sculpture	0	1	1	--
50.0711	Ceramic Arts and Ceramics	1	10	9	900.0%
50.0901	Music, General	3	5	2	66.7%
50.0902	Music History, Literature and Theory	645	770	125	19.4%
50.0903	Music Performance, General	150	154	4	2.7%
50.0904	Music Theory and Composition	56	56	0	0.0%
50.9997	Topics.	8	21	13	162.5%
51.0000	Health Services/Allied Health/Health Sciences, General (New)	316	424	108	34.2%
51.0707	Health Information/Medical Records Technology/Technician	476	446	-30	-6.3%
51.0708	Medical Transcription/Transcriptionist	43	60	17	39.5%
51.0710	Medical Office Assistant/Specialist (New)	1,297	1,423	126	9.7%
51.0801	Medical/Clinical Assistant	43	60	17	39.5%
51.0805	Pharmacy Technician/Assistant.	4	2	-2	-50.0%
51.0810	Emergency Care Attendant (EMT Ambulance)	269	229	-40	-14.9%
51.0904	Emergency Medical Technology/Technician (EMT Paramedic)	182	217	35	19.2%
51.0907	Medical Radiologic Technology/Science – Radiation Therapist	0	1	1	--
51.0908	Respiratory Care Therapy/Therapist	26	40	14	53.8%
51.0913	<i>Athletic Training/Trainer</i>	1	2	1	100.0%
51.1004	Clinical/Medical Laboratory Technician	2	1	-1	-50.0%
51.2201	Public Health, General.	47	6	-41	-87.2%
51.3104	Dietician Assistant (Moved from 20.0404)	36	35	-1	-2.8%
51.3801	Registered Nursing/Registered Nurse (Moved from 51.1601)	43	0	-43	-100.0%
51.3812	Perioperative/Operating Room and Surgical Nurse/Nursing (Moved from 51.1612)	0	1	1	--
51.3901	Licensed Practical/Vocational Nursing and Nursing Assistant, Other (New)	12	11	-1	-8.3%
51.3902	Nursing Assistant/Aide and Patient Care Assistant/Aide (Moved from 51.1614)	2,264	2,301	37	1.6%
51.9994	Career Exploration.	326	385	59	18.1%
51.9995		0	10	10	--
51.9997	Topics. (1.2 only)	0	23	23	--
51.9998	Internships. (1.2 only)	6	6	0	0.0%
51.9999	Health Professions and Related Clinical Sciences, Other	372	354	-18	-4.8%
52.0101	Business/Commerce, General	657	765	108	16.4%
52.0201	Business Administration and Management, General	62	82	20	32.3%
52.0301	Accounting	502	390	-112	-22.3%
52.0302	Accounting Technology/Technician and Bookkeeping	652	771	119	18.3%
52.0401	Administrative Assistant and Secretarial Science, General	1,391	1,193	-198	-14.2%
52.0407	Business/Office Automation/Technology/Data Entry	2,686	2,475	-211	-7.9%
52.0408	General Office Occupations and Clerical Services	2,172	2,481	309	14.2%
52.0409	Parts, Warehousing, and Inventory Management Operations (New)	31	3	-28	-90.3%
52.0411	Customer Service Support/Call Center/Teleservice Operation (New)	3	24	21	700.0%
52.0701	Entrepreneurship/Entrepreneurial Studies	345	506	161	46.7%
52.0703	Small Business Administration/Management (New)	47	86	39	83.0%
52.0801	Finance, General	54	32	-22	-40.7%
52.0803	Banking and Financial Support Services	14	1	-13	-92.9%
52.0807	Investments and Securities (Cross to 52.0899 for IPEDS)	5	15	10	200.0%
52.0905	Restaurant/Food Services Management	34	21	-13	-38.2%
52.1001	Human Resources Management/Personnel Administration, General	0	1	1	--
52.1003	Organizational Behavior Studies	7	28	21	300.0%
52.1101	International Business/Trade/Commerce (Cross to 52.9999 for IPEDS)	2	9	7	350.0%
52.1401	Marketing/Marketing Management, General	175	229	54	30.9%
52.1402	Marketing Research	15	19	4	26.7%
52.1803	Retailing and Retail Operations (Moved from 08.0705)	0	17	17	--
52.1804	Selling Skills and Sales Operations (Moved from 08.0706)	3	18	15	500.0%
52.1902	Fashion Merchandising	38	66	28	73.7%
52.2001	Construction Management	0	1	1	--
52.9994	Career Exploration.	289	168	-121	-41.9%
52.9997	Topics.	10	55	45	450.0%
52.9998	<i>Internships.</i>	19	10	-9	-47.4%
52.9999	Business, Management, Marketing, and Related Supportive Services, Other	4	5	1	25.0%
54.0101	History, General (Moved from 45.0801)	799	729	-70	-8.8%

Illinois Community College Board  
Table B-13  
STATEWIDE DUAL CREDIT ENROLLMENT BY PROGRAM (6-DIGIT CIP)  
FOR FISCAL YEARS 2015 & 2016

<u>CIP</u>	<u>COURSE NAME</u>	<u>2015</u>	<u>2016</u>	FY 2015 - 2016 1-Year Difference	
				<u>Number</u>	<u>Percent</u>
54.0102	American History (United States) (Moved from 45.0802)	2,952	3,409	457	15.5%
54.0103	European History	0	1	1	--
54.0106	Asian History	9	15	6	66.7%
54.9996		<u>51</u>	<u>71</u>	<u>20</u>	<u>39.2%</u>
	TOTALS	99,343	105,361	6,018	6.1%
	Pure				
	Minimum	0	0	-804	-100.0%
	Maximum	15,575	16,671	1,096	900.0%
	Median	33	35	1	0.8%
	Standard Deviation	1,061	1,134	136	135.6%
	Average	302	320	18	30.0%

\*CIP Number and Title were changed from 23.0401 English Composition to 23.1301 Writing General in 2010

\*\*CIP Number and Title were changed from 23.1001 Speech and Rhetorical Studies to 23.1304 Rhetoric and Composition in 2010

\*Includes PCS 11 and 12 only

SOURCE OF DATA: Annual Course (AC) Data

Illinois Community College Board  
Table B-14  
STATEWIDE DUAL CREDIT ENROLLMENT BY PROGRAM (2-DIGIT CIP)  
FOR FISCAL YEARS 2015 & 2016

CIP	COURSE NAME	2015	2016	FY 2015 - 2016 1-Year Difference	
				Number	Percent
01.	Agriculture, Agriculture Operations, and Related Sciences	1,549	1,483	-66	-4.3%
03.	Natural Resources and Conservation	25	22	-3	-12.0%
04.	Architecture and Related Services	8	20	12	150.0%
05.	<i>Area, Ethnic, Cultural, Gender, and Group Studies</i>	101	37	-64	-63.4%
09.	Communication, Journalism and Related Programs	515	387	-128	-24.9%
10.	Communications, Technologies/Technicians and Support Services	1,005	931	-74	-7.4%
11.	Computer and Information Sciences and Support Services	5,624	6,184	560	10.0%
12.	Personal and Culinary Services	2,088	2,285	197	9.4%
13.	Education	1,065	1,358	293	27.5%
14.	Engineering	55	70	15	27.3%
15.	<i>Engineering Technologies and Engineering-Related Fields</i>	3,044	3,164	120	3.9%
16.	Foreign Languages, Literatures, and Linguistics	5,253	5,491	238	4.5%
19.	Family and Consumer Sciences/Human Sciences	1,224	1,255	31	2.5%
22.	Legal Professions and Studies	0	2	2	--
23.	English Language and Literature/Letters	19,905	21,478	1,573	7.9%
24.	Liberal Arts and Sciences, General Studies and Humanities	2,377	2,545	168	7.1%
26.	Biological and Biomedical Sciences	3,541	4,142	601	17.0%
27.	Mathematics and Statistics	8,099	9,528	1,429	17.6%
30.	Multi/Interdisciplinary Studies	59	77	18	30.5%
31.	Parks, Recreation, Leisure and Fitness Studies	2,389	2,463	74	3.1%
38.	Philosophy and Religious Studies	488	744	256	52.5%
40.	Physical Sciences	2,304	2,536	232	10.1%
42.	Psychology	4,278	3,568	-710	-16.6%
43.	<i>Homeland Security, Law Enforcement, Firefighting and Related Protective Services</i>	2,298	2,453	155	6.7%
44.	Public Administration and Social Services Professions	1	0	-1	-100.0%
45.	Social Sciences	3,968	3,372	-596	-15.0%
46.	Construction Trades	551	586	35	6.4%
47.	Mechanics and Repair Technologies/Technicians	2,729	2,604	-125	-4.6%
48.	Precision Production	3,482	3,719	237	6.8%
49.	Transportation and Materials Moving	26	27	1	3.8%
50.	Visual and Performing Arts	2,499	3,097	598	23.9%
51.	<i>Health Professions and Related Programs</i>	5,765	6,037	272	4.7%
52.	Business Management, Marketing, and Related Supportive Services	9,217	9,471	254	2.8%
54.	History	<u>3,811</u>	<u>4,225</u>	<u>414</u>	<u>10.9%</u>
	TOTALS	99,343	105,361	6,018	6.1%
	Pure				
	Minimum	0	0	-710	-100.0%
	Maximum	19,905	21,478	1,573	150.0%
	Median	2,301	2,458	97	6.4%
	Standard Deviation	3,807	4,109	431	37.0%
	Average	2,922	3,099	177	6.0%

Includes PCS 11 and 12 only

SOURCE OF DATA: Annual Course (AC) Data



Illinois Community College Board  
Table B-15  
STATEWIDE DUAL CREDIT ENROLLMENT BY CAREER CLUSTER  
FOR FISCAL YEARS 2015 & 2016

Career Clusters				FY 2015 - 2016	
Code	Title	<u>2015</u>	<u>2016</u>	<u>Number</u>	<u>Percent</u>
1	Agriculture, Food & Natural Resources Cluster	1,480	1,457	-23	-1.6%
2	Architecture & Construction Cluster	659	710	51	7.7%
3	Arts, Audio/Video Technology & Communications Cluster*	23,184	24,898	1,714	7.4%
4	Business Management & Administration Cluster	7,712	8,039	327	4.2%
5	Education & Training Cluster	11,364	12,512	1,148	10.1%
6	Finance Cluster	1,227	1,209	-18	-1.5%
7	Government & Public Administration Cluster	2,081	1,332	-749	-36.0%
8	Health Science Cluster	4,843	4,959	116	2.4%
9	Hospitality & Tourism Cluster	767	951	184	24.0%
10	Human Services Cluster	6,148	5,382	-766	-12.5%
11	Information Technology Cluster	5,228	5,698	470	9.0%
12	Law, Public Safety, Corrections & Security Cluster	2,121	2,325	204	9.6%
13	Manufacturing Cluster	6,630	6,934	304	4.6%
14	Marketing Cluster	247	349	102	41.3%
15	Science, Technology, Engineering & Mathematics Cluster	20,070	22,840	2,770	13.8%
16	Transportation, Distribution & Logistics	2,112	1,983	-129	-6.1%
17	Unknown Cluster	<u>3,470</u>	<u>3,783</u>	<u>313</u>	<u>9.0%</u>
	TOTALS	99,343	105,361	6,018	6.1%
	Pure				
	Minimum	247	349	-766	-36.0%
	Maximum	23,184	24,898	2,770	41.3%
	Median	3,470	3,783	184	7.4%
	Standard Deviation	6,666.3	7,392.6	850.9	15.9%
	Average	5,844	6,198	354	5.0%

Includes PCS 11 and 12 only

SOURCE OF DATA: Annual Course (AC) Data

Illinois Community College Board  
Table B-16  
DUAL CREDIT ENROLLMENT BY INSTRUCTIONAL SITE AND BY COLLEGE  
FISCAL YEAR 2016

Dist. No.	District/College	Main College Campus	High School Campus	Off Campus College Facility	Online/ Internet	Distance Learning	Other Location	Total
50301	Black Hawk	19	2,923	210	91	0	0	3,243
50800	Chicago	(502)	(0)	(4,101)	(0)	(0)	(0)	(4,603)
50806	Daley	163	0	931	0	0	0	1,094
50801	Kennedy-King	19	0	315	0	0	0	334
50803	Malcolm X	29	0	367	0	0	0	396
50805	Olive-Harvey	14	0	401	0	0	0	415
50804	Truman	115	0	540	0	0	0	655
50802	Washington	128	0	664	0	0	0	792
50807	Wright	34	0	883	0	0	0	917
50701	Danville	1,613	614	79	0	0	0	2,306
50201	DuPage	0	4,757	2,337	0	0	945	8,039
50901	Elgin	365	0	0	0	0	0	365
51201	Harper	393	2,970	0	0	0	734	4,097
54001	Heartland	52	1,455	0	16	0	0	1,523
51901	Highland	75	1,161	0	0	0	504	1,740
51401	Illinois Central	148	3,305	188	0	0	145	3,786
52900	Illinois Eastern	(275)	(3,695)	(74)	(0)	(0)	(211)	(4,255)
52904	Frontier	76	1,888	0	0	0	174	2,138
52901	Lincoln Trail	23	471	44	0	0	0	538
52902	Olney Central	167	616	0	0	0	0	783
52903	Wabash Valley	9	720	30	0	0	37	796
51301	Illinois Valley	0	1,327	0	0	0	0	1,327
52501	Joliet	0	4,730	0	0	0	0	4,730
52001	Kankakee	0	909	0	0	0	0	909
50101	Kaskaskia	88	6,790	262	10	1	0	7,151
52301	Kishwaukee	398	397	0	0	0	0	795
53201	Lake County	146	1,227	0	0	0	402	1,775
51701	Lake Land	0	3,584	0	0	0	0	3,584
53601	Lewis & Clark	0	8,894	0	0	0	0	8,894
52601	Lincoln Land	0	2,718	0	0	0	297	3,015
53001	Logan	252	1,395	306	0	0	0	1,953
52801	McHenry	194	1,825	0	7	0	0	2,026
52401	Moraine Valley	0	2,632	0	0	0	0	2,632
52701	Morton	0	227	0	0	0	0	227
53501	Oakton	0	903	0	0	0	0	903
50501	Parkland	273	1,831	128	144	0	0	2,376
51501	Prairie State	0	1,165	0	0	0	0	1,165
52101	Rend Lake	205	2,497	251	87	0	0	3,040
53701	Richland	960	1,023	86	33	0	0	2,102
51101	Rock Valley	2,755	125	467	145	4	0	3,496
51801	Sandburg	250	976	101	101	0	0	1,428
50601	Sauk Valley	258	1,214	0	177	0	0	1,649
53101	Shawnee	0	913	0	0	0	0	913
51001	South Suburban	1,157	0	0	0	0	0	1,157
53301	Southeastern	168	1,128	0	392	25	76	1,789
52201	Southwestern	1,721	3,917	170	44	0	0	5,852
53401	Spoon River	13	307	113	0	8	251	692
50401	Triton	155	1,008	0	6	0	0	1,169
51601	Waubensee	357	2,851	873	0	0	0	4,081
53901	Wood	<u>0</u>	<u>480</u>	<u>88</u>	<u>6</u>	<u>0</u>	<u>0</u>	<u>574</u>
TOTALS		12,792	77,873	9,834	1,259	38	3,565	105,361

SOURCE OF DATA: Annual Course (AC) Data

Illinois Community College Board  
Table C-1  
FISCAL YEAR 2015 GRADUATING DUAL CREDIT STUDENTS  
ENROLLING IN THE SAME COMMUNITY COLLEGE IN FISCAL YEAR 2016

Dist. No.	District/College	FY15 All HS Students Enrolled in DC	FY15 HS Seniors Enrolled in DC	FY15 HS DC Seniors Enrolling in Same Institution in FY16		Of FY15 HS DC Seniors Enrolling in Same Institution, Students Taking at Least One Remedial Course*	
				Number	Percent	Number	Percent
50301	Black Hawk	1,372	1,047	311	29.7%	123	39.5%
50800	Chicago	(1,777)	(1,582)	(184)	(11.6%)	(53)	(28.9%)
50806	Daley	412	362	34	9.4%	15	44.0%
50801	Kennedy-King	133	125	4	3.2%	1	24.9%
50803	Malcolm X	118	115	22	19.3%	4	18.1%
50805	Olive-Harvey	186	181	13	7.2%	5	38.3%
50804	Truman	327	257	18	7.0%	3	16.6%
50802	Washington	223	202	48	23.8%	17	35.3%
50807	Wright	378	340	44	13.0%	8	18.1%
50701	Danville	1,431	652	4	0.6%	0	0.0%
50201	DuPage	4,874	4,320	755	17.5%	305	40.4%
50901	Elgin	970	608	253	41.7%	67	26.5%
51201	Harper	2,315	2,013	414	20.6%	96	23.2%
54001	Heartland	821	659	211	32.0%	82	38.8%
51901	Highland	799	603	100	16.6%	50	50.0%
51401	Illinois Central	1,786	1,498	557	37.2%	66	11.8%
52900	Illinois Eastern	(1,360)	(886)	(233)	(26.3%)	(26)	(11.1%)
52904	Frontier	697	464	60	13.0%	5	8.3%
52901	Lincoln Trail	184	103	51	49.9%	5	9.7%
52902	Olney Central	249	154	62	40.5%	9	14.4%
52903	Wabash Valley	230	165	59	35.9%	7	11.8%
51301	Illinois Valley	563	438	173	39.6%	48	27.7%
52501	Joliet	4,072	3,655	922	25.2%	300	32.5%
52001	Kankakee	465	300	30	10.0%	10	33.3%
50101	Kaskaskia	2,955	1,922	472	24.6%	156	33.0%
52301	Kishwaukee	494	429	111	25.9%	40	36.0%
53201	Lake County	1,292	1,083	290	26.8%	156	53.8%
51701	Lake Land	1,544	1,544	803	52.0%	139	17.3%
53601	Lewis & Clark	3,915	2,767	361	13.0%	107	29.6%
52601	Lincoln Land	1,852	1,516	336	22.2%	160	47.6%
53001	Logan	1,011	715	231	32.3%	33	14.3%
52801	McHenry	916	887	208	23.5%	50	24.0%
52401	Moraine Valley	1,436	1,246	204	16.4%	72	35.3%
52701	Morton	135	133	27	20.4%	17	62.8%
53501	Oakton	633	590	103	17.5%	47	45.6%
50501	Parkland	1,042	827	293	35.5%	91	31.0%
51501	Prairie State	718	677	118	17.4%	61	51.7%
52101	Rend Lake	1,041	683	327	47.9%	62	18.9%
53701	Richland	851	631	170	27.0%	69	40.6%
51101	Rock Valley	649	501	164	32.8%	35	21.3%
51801	Sandburg	454	353	88	25.0%	22	24.9%
50601	Sauk Valley	847	733	215	29.4%	86	40.0%
53101	Shawnee	493	493	327	66.2%	54	16.5%
51001	South Suburban	773	731	82	11.2%	43	52.4%
53301	Southeastern	587	462	189	41.0%	37	19.5%
52201	Southwestern	2,848	2,351	497	21.1%	254	51.1%
53401	Spoon River	289	239	77	32.3%	12	15.5%
50401	Triton	580	535	119	22.3%	56	47.0%
51601	Waubonsee	1,461	1,242	278	22.4%	71	25.5%
53901	Wood	<u>297</u>	<u>213</u>	<u>47</u>	<u>22.2%</u>	<u>3</u>	<u>6.4%</u>
TOTALS		51,718	41,764	10,281	24.6%	3,159	30.7%

\*Data are a subgroup to FY15 HS DC Seniors Enrolling in Same Institution in FY16

SOURCE OF DATA: Annual Enrollment and Completion (A1) Data